

EVK Series/系列 (1000 Vdc, 15-600A)

**BUSSMANN**  
SERIES

# Electric Vehicle Fuses

## 新能源车用熔断器



**EATON**

*Powering Business Worldwide*



# Electric Vehicle Fuses — EVK series (1000 Vdc, 15-600A)

## 新能源车用熔断器 — EVK 系列 (1000 Vdc, 15-600A)

Eaton's Bussmann series Electric Vehicle (EV) full range fuses for the protection of high power and auxiliary electrical systems up to 1000 Vdc in ratings from 15 to 600 amps.

伊顿Bussmann系列EV级车用熔断器可提供主回路及辅助支路系统的全范围保护，电压达到1000V直流，电流可以从15A到600A。

### Specifications / 参数:

- Volts / 电压: 1000 Vdc
- Amps / 电流: 15-600 A
- Interrupting rating / 分断能力: Max / 最大25kA
- Time constant / 时间常数:  $2 \pm 0.5$ ms
- Ambient temperature / 环境温度:  $-40 \sim 125^{\circ}\text{C}$

### Catalog symbol / 型号 :

|               |                |
|---------------|----------------|
| EVK10-(amp)-T | bolt-on / 螺栓固定 |
| EVK14-(amp)-T | bolt-on / 螺栓固定 |
| EVK22-(amp)-T | bolt-on / 螺栓固定 |
| EVK25-(amp)   | bolt-on / 螺栓固定 |
| EVK30-(amp)   | bolt-on / 螺栓固定 |
| EVK40-(amp)   | bolt-on / 螺栓固定 |
| EVK50-(amp)   | bolt-on / 螺栓固定 |
| EVK60-(amp)   | bolt-on / 螺栓固定 |

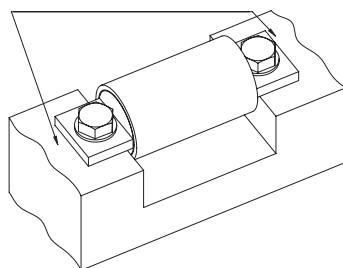
### Agency information / 相关标准信息:

- Designed to / 符合标准: UL248-20 / ISO8820-8 / JASO D622
- Manufactured under ITAF16949/VDA6.3 quality system for compliance with automotive requirements  
在 ITAF16949/VDA6.3 质量系统下制造, 符合汽车标准要求
- RoHS compliant  
符合RoHS要求
- REACH declaration available upon request  
根据需要可提供REACH声明

### Packaging and installation suggestion / 包装和安装建议:

Installation method diagram  
安装方式图

The installation surface should be flat and clean without oil stain, etc  
安装表面应平整、洁净、无油污等



See below table and right diagram /  
见下表及右图

### Features / 性能:

- Excellent design and application experiences with EV for decades, to serve the customers globally  
在EV行业内, 优秀的产品设计能力和长期的应用经验, 服务于世界范围内众多用户
- Comply with various international and field EV application standards worldwide  
符合世界范围及行业内多项EV熔断器产品标准
- Higher voltage rating provides overall system with more efficient and economical solution while meeting the needs of higher voltage battery packs  
在满足高压直流电池系统应用的同时, 提供给系统更有效且经济的产品方案
- Higher interrupting rating projects high capacity battery packs needed for vehicle long mileage and fast acceleration requirements  
具有更高的分断能力, 适合大容量电池系统的应用, 满足车辆长续航和急加速的使用要求
- To help project the life of the fuse in the application, unique driving profiles and conditions can be simulated to verify proper fuse size and performance under a wide range of driving behaviors  
提升了熔断器在使用过程中的寿命, 在各种驾驶工况条件下, 根据工况条件进行模拟和计算得出合理的参数规格
- Operation as low as 135% for 15A to 200A and 200% for 225A to 600A overload provides back up protection to the battery management system  
能够对电池系统提供135% (15A到200A) 或200% (225A到600A) 的低电流过载保护
- More wider protection range with lower MBC and higher IR, much faster opening with low temperature rise under high fault current conditions helps assure reliable protection of circuits and components  
更低的最小熔断电流值MBC和更高的最大分断电流值IR, 使得产品具有更广的电流保护范围; 更快的熔断速度和较低的产品温升, 使得产品在线路发生故障时能提供可靠的保护

### Basic information / 基本信息:

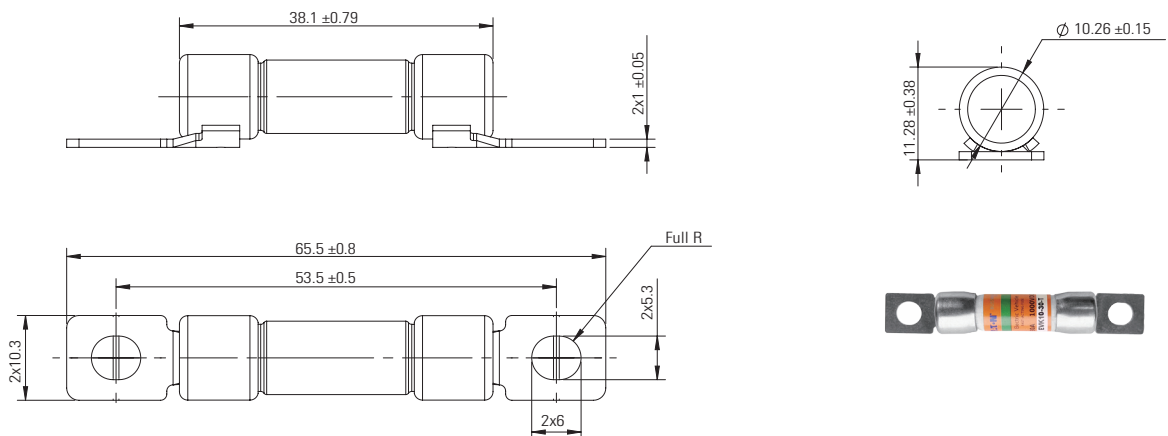
| P/N / 型号    | Current / 电流 (A) |     |     |     | Packing quantity/<br>包装数量<br>(per container/每包装) | Screw / 螺栓 | Recommended<br>tightening torque /<br>推荐扭矩 (N.m) |
|-------------|------------------|-----|-----|-----|--|------------|--|
|             | 15               | 20  | 25  | 30  |  |            |  |
| EVK10-XXX-T | 15               | 20  | 25  | 30  | 270  | M5         | 4.5 ± 1  |
| EVK14-XXX-T |                  | 35  | 40  | 50  | 75   | M5         | 4.5 ± 1  |
| EVK22-XXX-T |                  | 60  | 70  | 80  | 100  | M6         | 9 ± 1  |
| EVK25-XXX   | 70               | 80  | 90  | 100 | 195  | M8         | 12 ± 1   |
| EVK30-XXX   | 125              | 150 | 175 | 200 | 75   | M8         | 12 ± 1   |
| EVK40-XXX   | 225              | 250 | 275 | 300 | 85   | M10        | 20 ± 1   |
| EVK50-XXX   |                  |     | 350 | 400 | 28   | M10        | 20 ± 1   |
| EVK60-XXX   | 450              | 500 | 550 | 600 | 18   | M10        | 20 ± 1   |

# Electric Vehicle Fuses — EVK series (1000 Vdc, 15-600A)

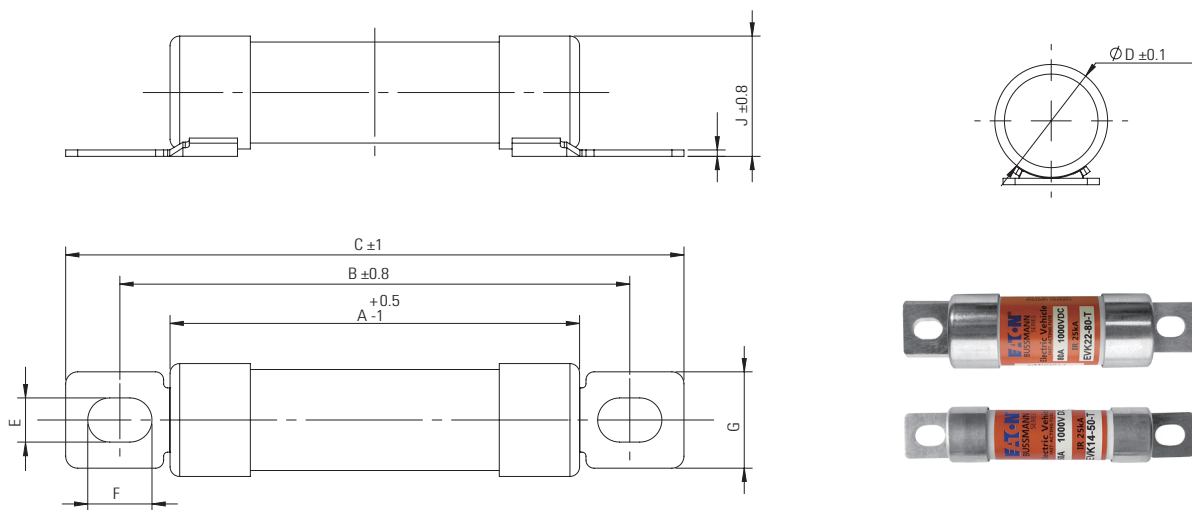
新能源车用熔断器 — EVK 系列 (1000 Vdc, 15-600A)

## Dimensions / 尺寸 : mm

### EVK10

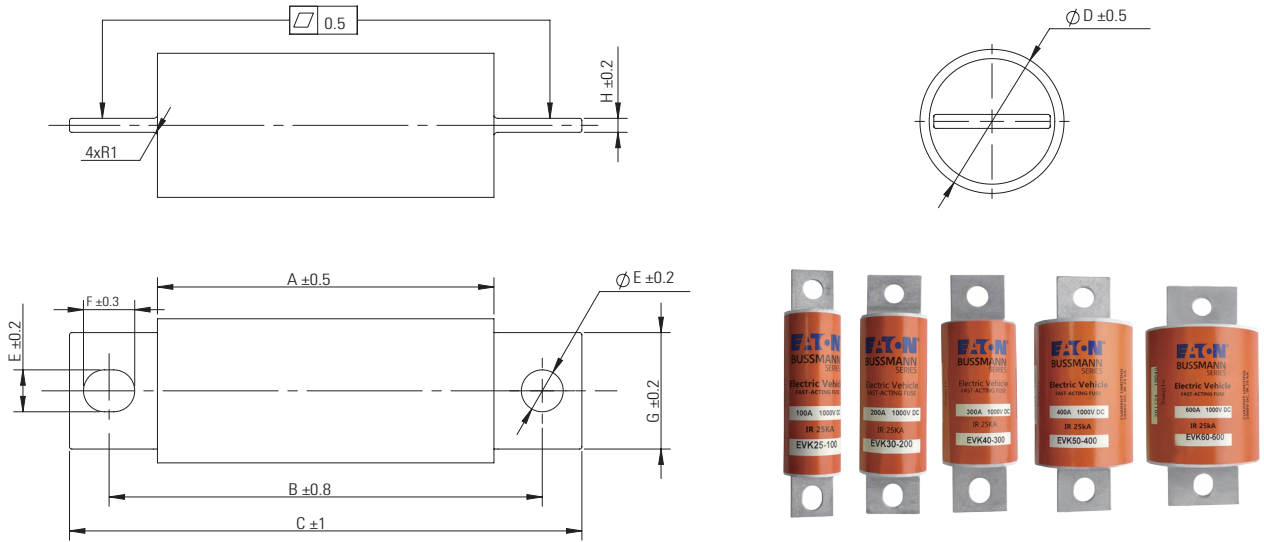


### EVK14 / EVK22



| Size<br>系列 | Current Rating<br>额定电流 (A) | A  | B    | C  | D    | E   | F | G  | H   | J    |
|------------|----------------------------|----|------|----|------|-----|---|----|-----|------|
| EVK14      | 35 ~ 50                    | 51 | 63.5 | 77 | 14.3 | 5.5 | 8 | 12 | 0.8 | 15.1 |
| EVK22      | 60 ~ 80                    | 58 | 75   | 90 | 22.2 | 6.5 | 9 | 16 | 1   | 23.2 |

EVK25 / EVK30 / EVK40 / EVK50 / EVK60



| Size<br>系列 | Current Rating<br>额定电流 (A) | A    | B   | C   | D    | E  | F  | G  | H   |
|------------|----------------------------|------|-----|-----|------|----|----|----|-----|
| EVK25      | 70 ~ 100                   | 72.2 | 93  | 110 | 25.4 | 9  | 11 | 19 | 2.2 |
| EVK30      | 125 ~ 200                  | 72.2 | 93  | 110 | 31   | 9  | 11 | 25 | 3   |
| EVK40      | 225 ~ 300                  | 72.2 | 100 | 122 | 38.1 | 11 | 13 | 28 | 3.5 |
| EVK50      | 350 ~ 400                  | 72.2 | 100 | 122 | 50.8 | 11 | 13 | 28 | 5   |
| EVK60      | 450 ~ 600                  | 72.2 | 100 | 122 | 63.5 | 11 | 13 | 40 | 6   |

## Electric Vehicle Fuses — EVK series (1000 Vdc, 15-600A)

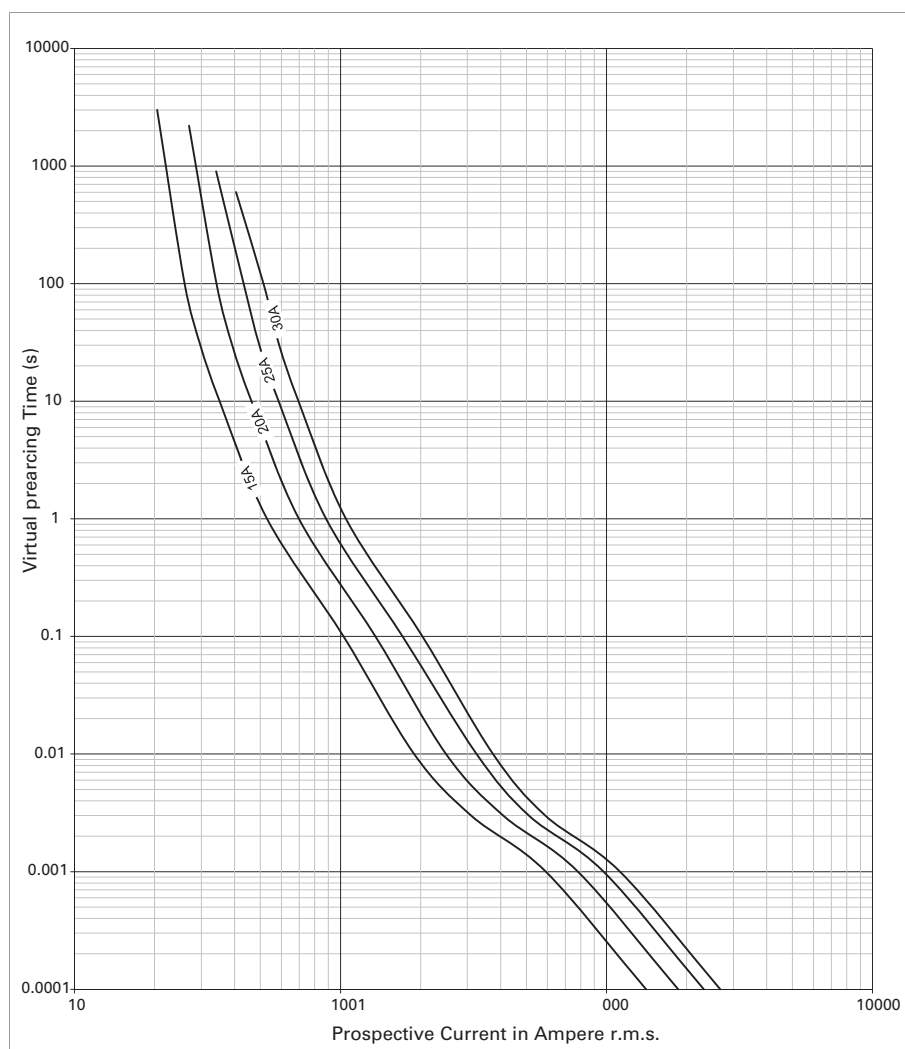
新能源车用熔断器 — EVK 系列 (1000 Vdc, 15-600A)

### Electric vehicle auxiliary fuses / 新能源车用辅助支路熔断器 — EVK10-XXX-T (1000 Vdc, 15-30A)



| Voltage rating<br>电压<br>(V) | Current rating<br>额定电流 $I_n$<br>(A) | Pre-arcing $I^2t$<br>弧前 $I^2t$ 值<br>(A <sup>2</sup> s) | Total $I^2t$<br>总 $I^2t$ 值<br>(A <sup>2</sup> s) | Power dissipation<br>at 1.0 $I_n$<br>1.0 $I_n$ (W) 时功率损耗 | Power dissipation<br>at 0.5 $I_n$<br>0.5 $I_n$ (W) 时功率损耗 |
|-----------------------------|-------------------------------------|--|--|--|--|
| 1000Vdc                     | 15                                  | 120  | 700  | 2.8  | 0.6  |
|                             | 20                                  | 227  | 1,200  | 3.7  | 0.7  |
|                             | 25                                  | 480  | 2,200  | 4  | 0.8  |
|                             | 30                                  | 677  | 3,400  | 4.9  | 1  |

### T-C curve / 曲线

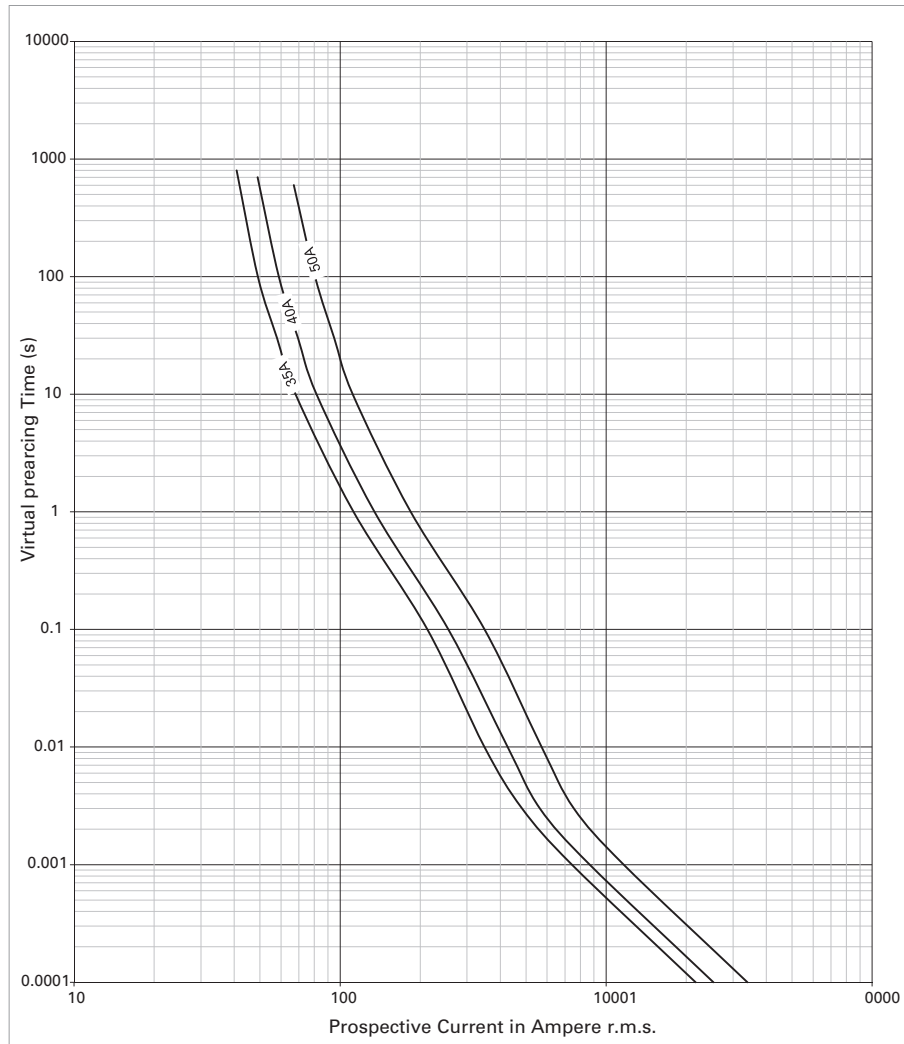


Electric vehicle auxiliary fuses / 新能源车用辅助支路熔断器 — EVK14-XXX-T (1000 Vdc, 35-50A)



| Voltage rating<br>电压<br>(V) | Current rating<br>额定电流 $I_n$<br>(A) | Pre-arcing $I^2t$<br>弧前 $I^2t$ 值<br>(A <sup>2</sup> s) | Total $I^2t$<br>总 $I^2t$ 值<br>(A <sup>2</sup> s) | Power dissipation<br>at 1.0 $I_n$<br>1.0 $I_n$ (W) 时功率损耗 | Power dissipation<br>at 0.5 $I_n$<br>0.5 $I_n$ (W) 时功率损耗 |
|-----------------------------|-------------------------------------|--|--|--|--|
| 1000Vdc                     | 35                                  | 415  | 2,100  | 7.5  | 1.9  |
|                             | 40                                  | 620  | 3,000  | 8.2  | 2  |
|                             | 50                                  | 1,230  | 5,500  | 9.2  | 2.3  |

T-C curve / 曲线



## Electric Vehicle Fuses — EVK series (1000 Vdc, 15-600A)

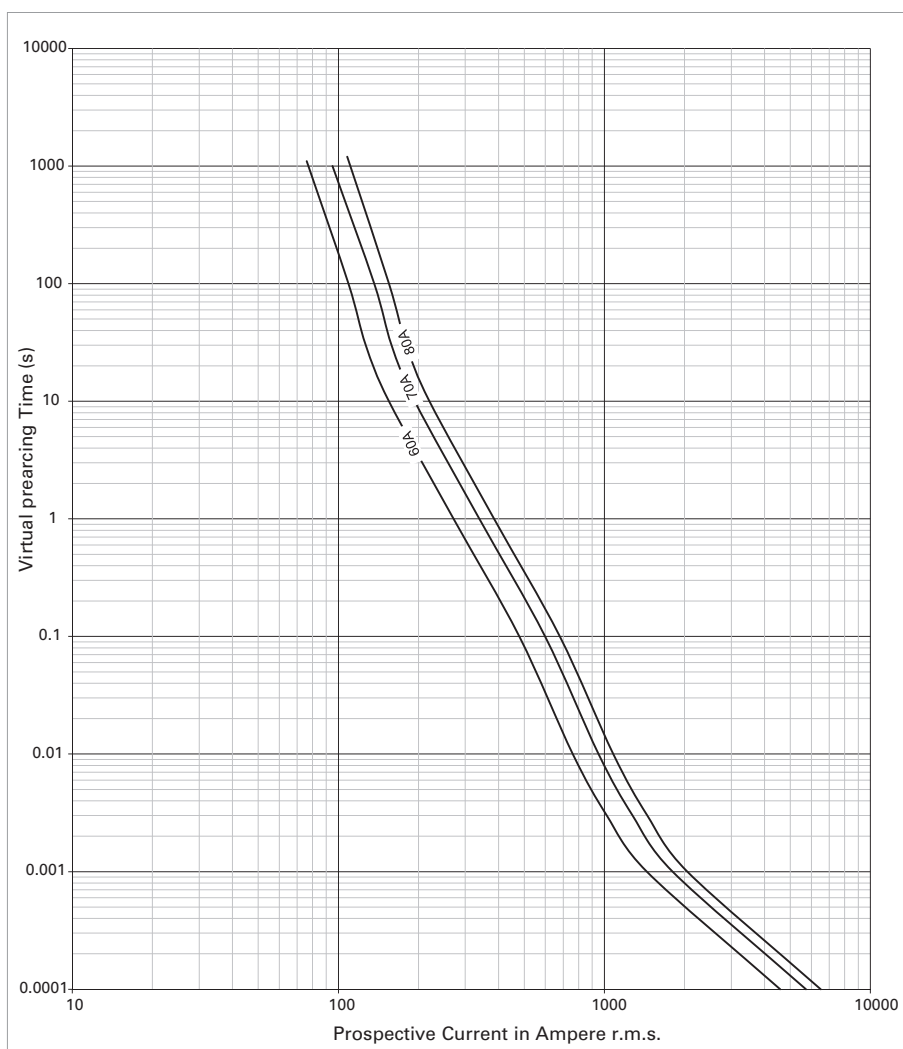
新能源车用熔断器 — EVK 系列 (1000 Vdc, 15-600A)

### Electric vehicle power fuses / 新能源车用主回路熔断器 — EVK22-XXX-T (1000 Vdc, 60-80A)



| Voltage rating<br>电压<br>(V) | Current rating<br>额定电流 $I_n$<br>(A) | Pre-arcing $I^2t$<br>弧前 $I^2t$ 值<br>(A <sup>2</sup> s) | Total $I^2t$<br>总 $I^2t$ 值<br>(A <sup>2</sup> s) | Power dissipation<br>at 1.0 $I_n$<br>1.0 $I_n$ (W) 时功率损耗 | Power dissipation<br>at 0.5 $I_n$<br>0.5 $I_n$ (W) 时功率损耗 |
|-----------------------------|-------------------------------------|--|--|--|--|
| 1000Vdc                     | 60                                  | 3,000  | 9,600  | 12.2   | 2.4  |
|                             | 70                                  | 4,688  | 15,000   | 13.4   | 2.7  |
|                             | 80                                  | 6,050  | 19,400   | 15.9   | 3.2  |

### T-C curve / 曲线



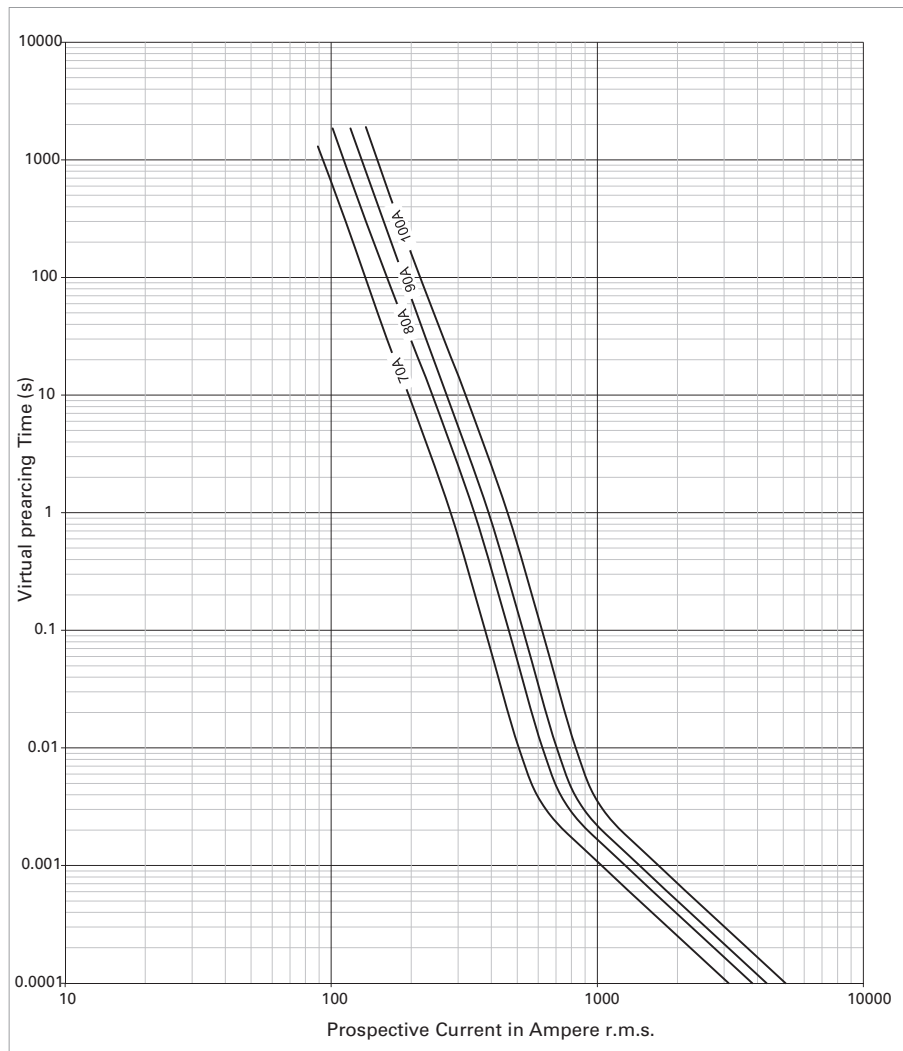


Electric vehicle power fuses / 新能源车用主回路熔断器 — EVK25-XXX (1000 Vdc, 70-100A)



| Voltage rating<br>电压<br>(V) | Current rating<br>额定电流 $I_n$<br>(A) | Pre-arcing $I^2t$<br>弧前 $I^2t$ 值<br>(A <sup>2</sup> s) | Total $I^2t$<br>总 $I^2t$ 值<br>(A <sup>2</sup> s) | Power dissipation<br>at 1.0 $I_n$<br>1.0 $I_n$ (W) 时功率损耗 | Power dissipation<br>at 0.5 $I_n$<br>0.5 $I_n$ (W) 时功率损耗 |
|-----------------------------|-------------------------------------|--|--|--|--|
| 1000Vdc                     | 70                                  | 908  | 3,400  | 21.3   | 4.3  |
|                             | 80                                  | 1,367  | 4,900  | 24   | 4.8  |
|                             | 90                                  | 1,861  | 6,300  | 26.7   | 5.3  |
|                             | 100                                 | 2,430  | 8,300  | 29.6   | 5.9  |

T-C curve / 曲线



## Electric Vehicle Fuses — EVK series (1000 Vdc, 15-600A)

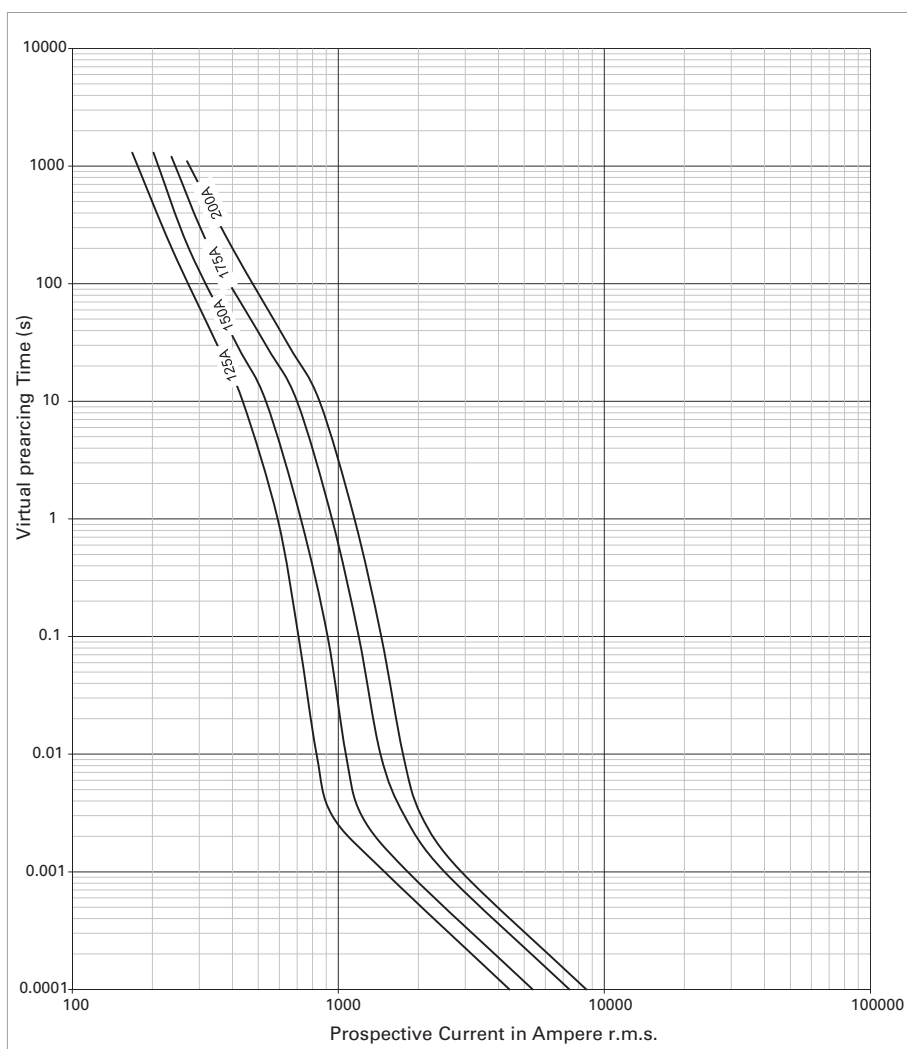
新能源车用熔断器 — EVK 系列 (1000 Vdc, 15-600A)

### Electric vehicle power fuses / 新能源车用主回路熔断器 — EVK30-XXX (1000 Vdc, 125-200A)



| Voltage rating<br>电压<br>(V) | Current rating<br>额定电流 $I_n$<br>(A) | Pre-arcing $I^2t$<br>弧前 $I^2t$ 值<br>(A <sup>2</sup> s) | Total $I^2t$<br>总 $I^2t$ 值<br>(A <sup>2</sup> s) | Power dissipation<br>at 1.0 $I_n$<br>1.0 $I_n$ (W) 时功率损耗 | Power dissipation<br>at 0.5 $I_n$<br>0.5 $I_n$ (W) 时功率损耗 |
|-----------------------------|-------------------------------------|--|--|--|--|
| 1000Vdc                     | 125                                 | 1,659  | 6,000  | 33.6   | 8.4  |
|                             | 150                                 | 2,478  | 9,000  | 40.3   | 10.1   |
|                             | 175                                 | 4,427  | 14,000   | 42.4   | 10.6   |
|                             | 200                                 | 6,272  | 21,000   | 46.9   | 11.7   |

### T-C curve / 曲线

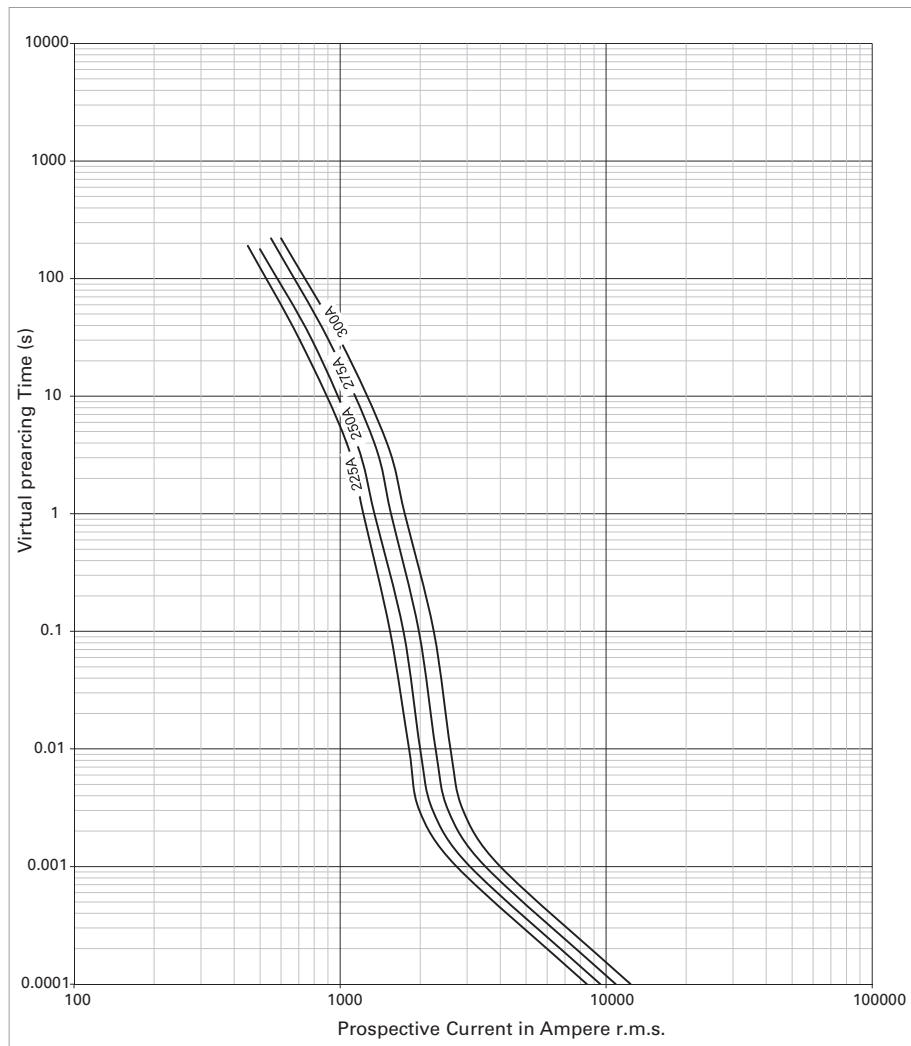


Electric vehicle power fuses / 新能源车用主回路熔断器 — EVK40-XXX (1000 Vdc, 225-300A)



| Voltage rating<br>电压<br>(V) | Current rating<br>额定电流 $I_n$<br>(A) | Pre-arcing $I^2t$<br>弧前 $I^2t$ 值<br>(A <sup>2</sup> s) | Total $I^2t$<br>总 $I^2t$ 值<br>(A <sup>2</sup> s) | Power dissipation<br>at 1.0 $I_n$<br>1.0 $I_n$ (W) 时功率损耗 | Power dissipation<br>at 0.5 $I_n$<br>0.5 $I_n$ (W) 时功率损耗 |
|-----------------------------|-------------------------------------|--|--|--|--|
| 1000Vdc                     | 225                                 | 7,162  | 24,000   | 68.7   | 13.7   |
|                             | 250                                 | 9,032  | 29,000   | 78.7   | 15.7   |
|                             | 275                                 | 11,796   | 35,000   | 83.3   | 16.7   |
|                             | 300                                 | 15,264   | 43,000   | 87.1   | 17.4   |

T-C curve / 曲线



## Electric Vehicle Fuses — EVK series (1000 Vdc, 15-600A)

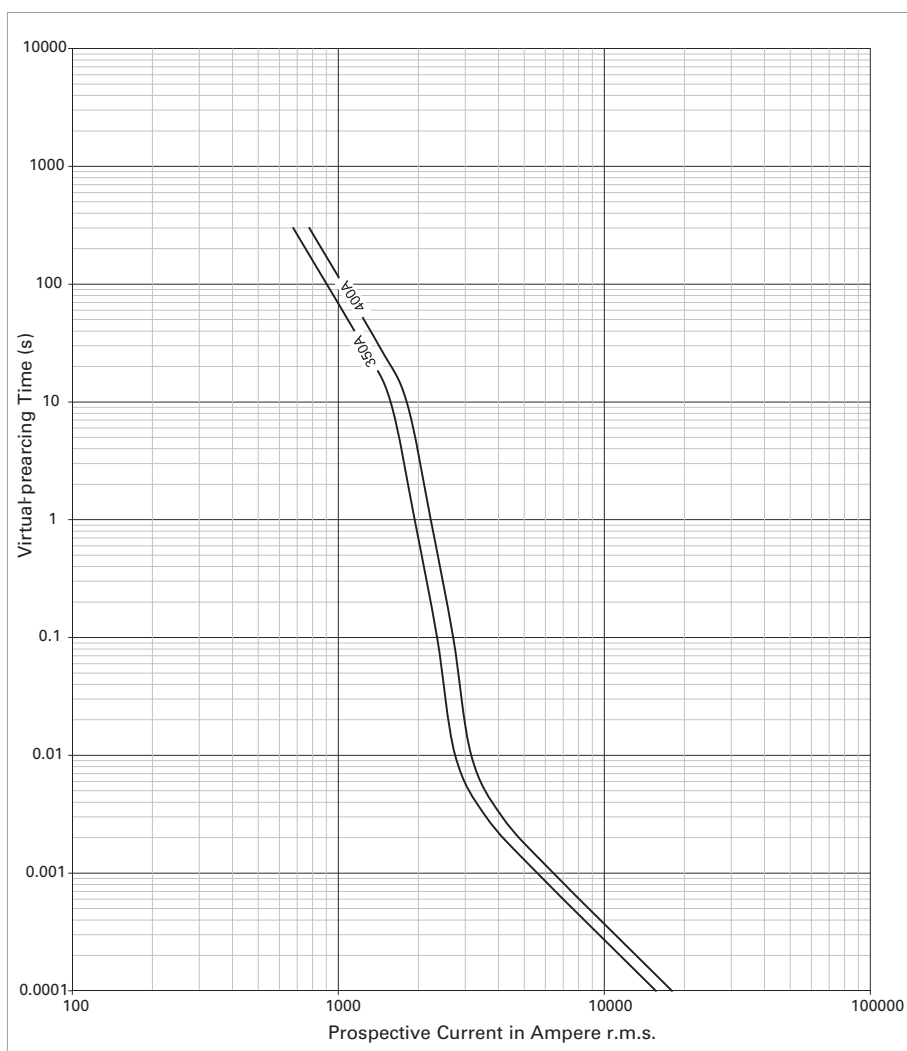
新能源车用熔断器 — EVK 系列 (1000 Vdc, 15-600A)

### Electric vehicle power fuses / 新能源车用主回路熔断器 — EVK50-XXX (1000 Vdc, 350-400A)



| Voltage rating<br>电压<br>(V) | Current rating<br>额定电流 $I_n$<br>(A) | Pre-arcing $I^2t$<br>弧前 $I^2t$ 值<br>(A <sup>2</sup> s) | Total $I^2t$<br>总 $I^2t$ 值<br>(A <sup>2</sup> s) | Power dissipation<br>at 1.0 $I_n$<br>1.0 $I_n$ (W) 时功率损耗 | Power dissipation<br>at 0.5 $I_n$<br>0.5 $I_n$ (W) 时功率损耗 |
|-----------------------------|-------------------------------------|--|--|--|--|
| 1000Vdc                     | 350                                 | 19,117   | 69,000   | 89.3   | 17.9   |
|                             | 400                                 | 28,647   | 97,000   | 96.2   | 19.2   |

### T-C curve / 曲线

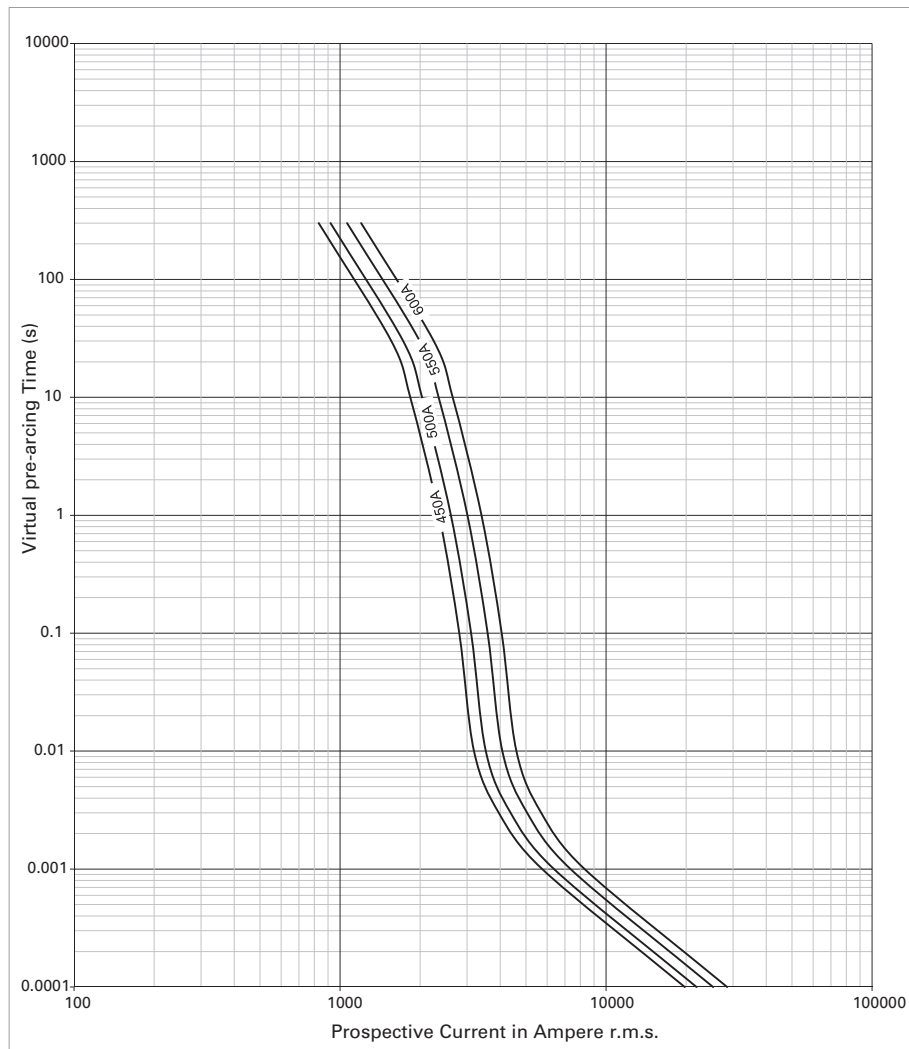


Electric vehicle power fuses / 新能源车用主回路熔断器 — EVK60-XXX (1000 Vdc, 450-600A)



| Voltage rating<br>电压<br>(V) | Current rating<br>额定电流 $I_n$<br>(A) | Pre-arcing $I^2t$<br>弧前 $I^2t$ 值<br>(A <sup>2</sup> s) | Total $I^2t$<br>总 $I^2t$ 值<br>(A <sup>2</sup> s) | Power dissipation<br>at 1.0 $I_n$<br>1.0 $I_n$ (W) 时功率损耗 | Power dissipation<br>at 0.5 $I_n$<br>0.5 $I_n$ (W) 时功率损耗 |
|-----------------------------|-------------------------------------|--|--|--|--|
| 1000Vdc                     | 450                                 | 32,604   | 104,000  | 113.1  | 28.3   |
|                             | 500                                 | 40,011   | 120,000  | 129.6  | 32.4   |
|                             | 550                                 | 53,268   | 149,000  | 139.6  | 34.9   |
|                             | 600                                 | 67,948   | 177,000  | 154.8  | 38.7   |

T-C curve / 曲线

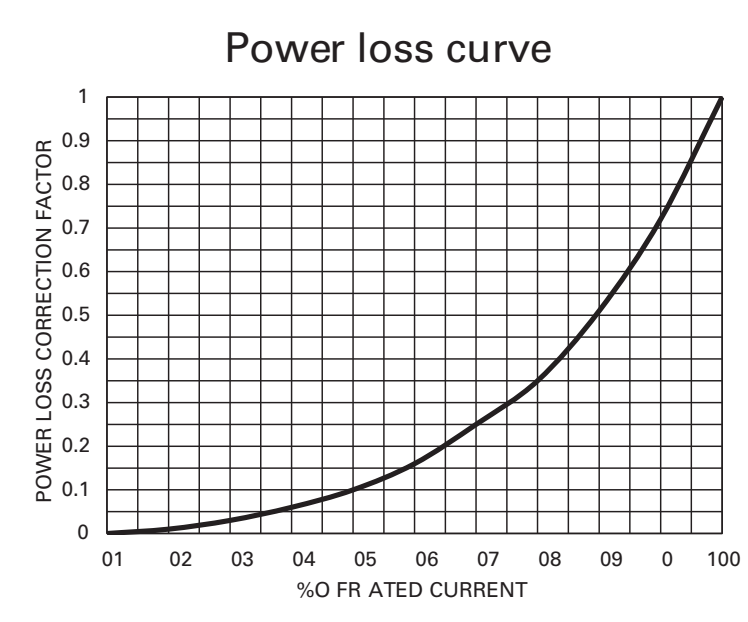


## Electric Vehicle Fuses — EVK series (1000 Vdc, 15-600A)

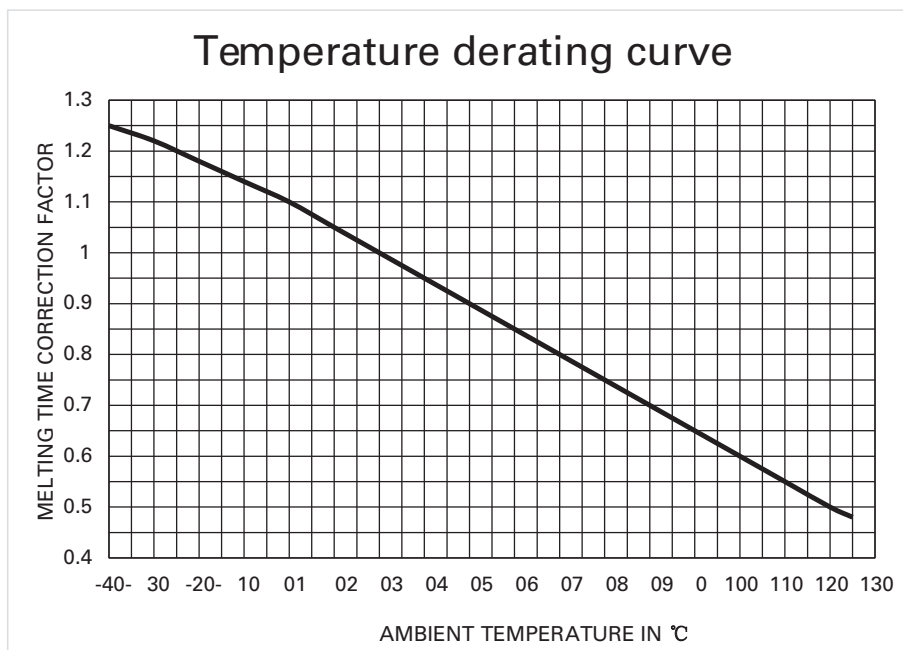
新能源车用熔断器 — EVK 系列 (1000 Vdc, 15-600A)

### Electric vehicle power fuses / 新能源车用主回路熔断器 — EVK series (1000 Vdc, 15-600A)

#### Power loss curve / 功率损耗曲线



#### Temperature derating curve / 温度降容曲线





Eaton's mission is to improve the quality of life and the environment through the use of power management technologies and services. We provide sustainable solutions that help our customers effectively manage electrical, hydraulic, and mechanical power – more safely, more efficiently, and more reliably. Eaton's 2020 revenues were \$17.9 billion, and we sell products to customers in more than 175 countries. We have approximately 94,000 employees.

Eaton began operation in China more than 20 years ago. Since entering the Chinese market in 1993, Eaton's presence has grown significantly in the country. In 2004, Eaton moved its Asia Pacific headquarters from Hong Kong to Shanghai.

In the Greater China region, Eaton has nearly 9,800 employees, 29 manufacturing bases and 5 R&D centers. Today, we make most products for all of Eaton's distinct business here.

For more information about the company, visit **Eaton.com**  
For more information about Eaton China, visit **Eaton.com.cn**  
Eaton China official social media account: **Eaton\_China**

伊顿公司致力于通过运用动力管理技术和服务来改善人类生活品质并提升环境质量。我们提供各种可持续的解决方案，帮助客户更安全、更高效、更可靠地有效管理电力、流体动力和机械动力。2020年，伊顿公司实现销售额达179亿美元，全球汇聚了约9万4千名员工，产品覆盖超过175个国家。

伊顿公司深耕中国市场二十余年，于1993年进入中国市场，此后迅速发展其中国业务。2004年，公司亚太区总部从香港搬至上海。大中华区约有近9千8百名员工，29家生产制造基地和5家研发中心。如今，伊顿公司旗下绝大多数产品已实现中国制造。

如需更多信息，敬请访问伊顿公司官方中文网站：**Eaton.com.cn**  
关注伊顿公司的官方微信公众账号：**Eaton\_China**

#### **Eaton Bussmann**

Cooper Xi'an Fusegear Co., Ltd.  
No. 86, Jinye Road, High Tech Zone,  
Xi'an, 710077, P. R. China  
Tel: (86) 29 88241869  
Asia: order.xian@eaton.com  
Europe: bulehighspeedtechnical@eaton.com  
USA: EVProtection@Eaton.com  
www.eaton.com

© 2021 Eaton Corporation  
All Rights Reserved  
Printed in China  
Publication No. EB2021001  
June 2021

#### **伊顿 Bussmann**

库柏西安熔断器有限公司  
西安市高新区锦业路86号  
邮编：710077  
电话：(86) 29 88241869  
亚洲：order.xian@eaton.com  
欧洲：bulehighspeedtechnical@eaton.com  
美国：EVProtection@Eaton.com  
www.eaton.com.cn/electrical

© 2021 伊顿公司  
本公司保留对样本资料的解释权和  
修改权，并毋需另行通知。  
出版号：EB2021001  
06-2021

Eaton is a registered trademark  
of Eaton Corporation.

All trademarks are property of their  
respective owners.

伊顿是伊顿公司的注册商标。

所有商标为各自所有人所有。

