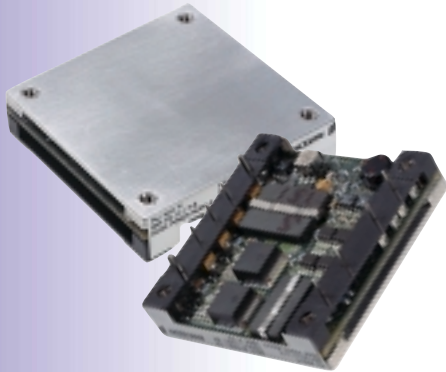


PKJ 4000 I Series

22-150 Watt DC/DC power modules



61.0 x 57.9 x 12.7 mm (2.4 x 2.28 x 0.5 inch)

The PKJ 4000 I series represents a “third generation” of high density DC/DC power modules providing more than 90% efficiency. To achieve this high efficiency they use proprietary drive and control circuits with planar magnetics and low resistivity multilayer PCB technology, and a patent pending topology with active rectification.

The PKJ 4000 I series can be used without bulky and height consuming heatsinks, resulting in a lower total cost. This also provides narrow board spacing for electronic, shelf based applications. The products are in the industry standard package size and offer a beneficial alternative to competing products on the market. The PKJ 4000 I series also offers the flexibility of using a heatsink when needed, enabling reduced airflow, extended reliability or higher

- High efficiency 93% typ. at 12V
- MTBF > 3 million hours in accordance with Bellcore TR-332
- Industry standard footprint
- Max case temperature +100°C
- 1,500 Vdc isolation voltage
- High power density, up to 55 W/in³.

ambient temperature operation in a wide range of 48 and 60 Vdc (36-75 Vdc) systems.

Similar to other Ericsson power modules, the PKJ 4000 I series includes over and under-voltage protection, over-temperature protection, soft-start and is short circuit proof.

V _i	V _o /I _o max	P _o max	Article Code
36-75 Vdc	1.5 V/15 A	22.5 W	PKJ 4218 PIOAT
36-75 Vdc	1.8 V/15 A	27 W	PKJ 4218 PIT
36-75 Vdc	2.5 V/15 A	37.5 W	PKJ 4319 PI
36-75 Vdc	3.3 V/15 A	50 W	PKJ 4510 PI
36-75 Vdc	5 V/15 A	75 W	PKJ 4711 PI
36-75 Vdc	12V/6.25 A	75 W	PKJ 4713 PI
36-75 Vdc	1.5 V/20 A	30 W	PKJ 4318 PIOAT
36-75 Vdc	1.8 V/20 A	36 W	PKJ 4318 PIT
36-75 Vdc	2.5 V/20 A	50 W	PKJ 4519 PI
36-75 Vdc	3.3 V/20 A	66 W	PKJ 4610 PI
36-75 Vdc	5 V/20 A	100 W	PKJ 4111 PI
36-75 Vdc	12 V/8.3 A	100 W	PKJ 4113 PI
36-75 Vdc	1.5 V/30 A	45 W	PKJ 4418 PIOAT
36-75 Vdc	1.8 V/30 A	54 W	PKJ 4518 PIT
36-75 Vdc	2.5 V/30 A	75 W	PKJ 4719 PI
36-75 Vdc	3.3 V/30 A	100 W	PKJ 4910 PI
36-75 Vdc	5 V/30 A	150 W	PKJ 4111A PI
36-75 Vdc	12 V/12.5 A	150 W	PKJ 4113A PI

