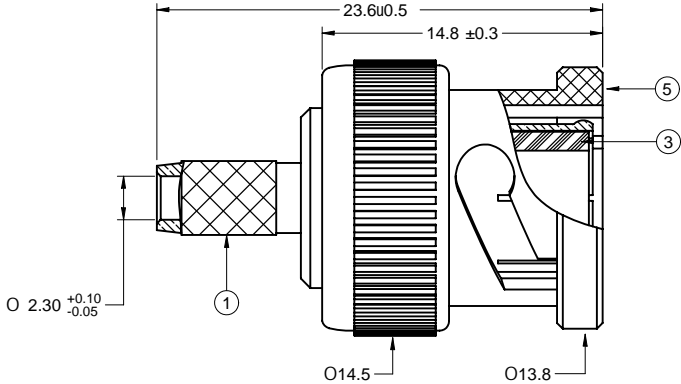
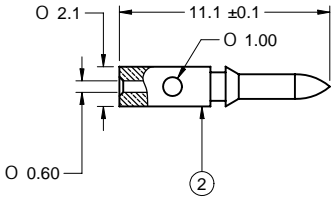
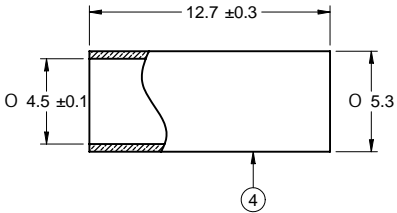


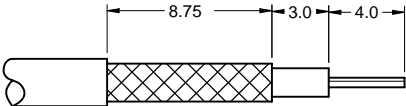
PART NUMBER	ITEM ① BODY	ITEM ② CONTACT	ITEM ③ INSULATOR	ITEM ④ CRIMP SLEEVE	ITEM ⑤ CUPLING NUT
CPMC-88-19	BRASS NICKEL PLATED	BRASS GOLD PLATED	TEFLON	BRASS NICKEL PLATED	ZIINC NICKEL PLATED

DRAWING NO. CPMC-88-19						
REVISIONS						
RELEASE FOR QUTATION						
A	09-26-05	Y	U	W	T	

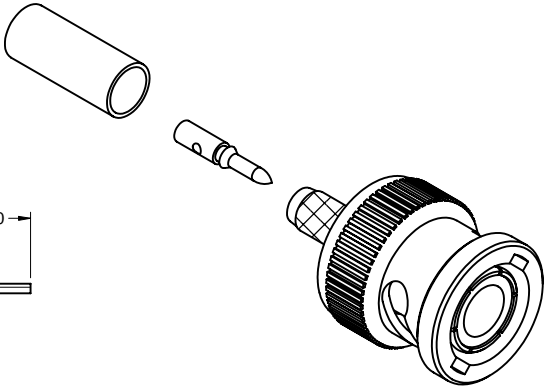


NOTES:

- ELECTRICAL SPECIFICATIONS
IMPEDANCE: 50 OHMS NOMINAL
FREQUENCY RANGE: 0-4 GHz
WORKING VOLTAGE: 500 Vrms MAX AT SEA LEVEL
DIECTRIC WITHSTANDING VOTALGE: 1500 vrms AT SEA LEVEL
CORONA LEVEL:375 VOLTS MINIMUM AT 70,000 FEET
CONTACT RESISTANCE: OUTER-0.2 MILLIOHMS MAXIMUM
CENTER-2.1 MILLIOHMS MAXIMUM
INSULATION RESISTANCE: 5000 MEGOHMS MINIMUM
- MECHANICAL SPECIFICATIONS
DURABILITY: 500 CYCLES MIN
FORCE TO ENGAGE/DISENGAGE:3 LBS.MAXIMUM
CABLE ACCEPTABILITY: RG174,RG188,RG316
- ENVIRONMENTAL SPECIFICATIONS
RECOMMENDED TEMPERATURE RANGE: -55 TO +85
MOISTURE RESISTANCE: MIL-STD-202



CABLE STRIP DIMENSIONS
ASSEMBLY INSTRUCTIONS ON SHEET 2



THIS DRAWING TO BE INTERPRETED
PER ANSI Y 14.5M - 1994

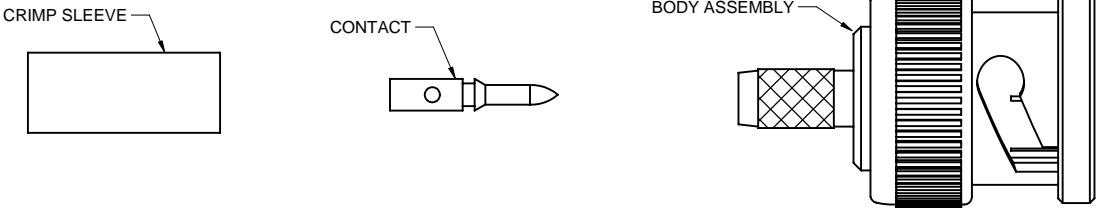
COMPANY CONFIDENTIAL

TOLERANCE UNLESS OTHERWISE SPECIFIED		DRAWN BY BETTY.YU		DATE 09-22-05	
DECIMALS	mm	CHECKED BY IVON.WANG		DATE 09-26-05	
X	+ 0.5	APPROVED BY THOMAS		DATE 09-26-05	
X.X	+ 0.2				
X.XX	+ 0.05				
ANGLES	+ 0.5°	U/M	mm		
THIS DRAWING WAS PRODUCED BY COMPUTER, DO NOT SCALE DRAWING OR UPDATE MANUALLY.					

EMERSON Network Power		Connectivity Solutions	
TITLE STRAIGHT BNC CRIMP PLUG FOR RG316 STYLE CABLE			
SHEET 1 OF 2	DRAWING NO. CPMC-88-19		SIZE C

PART NUMBER	CABLE	CRIMP SLEEVE HEX SIZE	CRIMP CONTACT HEX SIZE	RECOMMENDED CRIMP TOOL
CPMC-88-19	RG174, 188, 316	4.67	1.68	24-9912P

DRAWING NO. CPMC-88-19									
REVISIONS									
RELEASE FOR QUTATION									
A	09-26-05	Y	U	W	T				



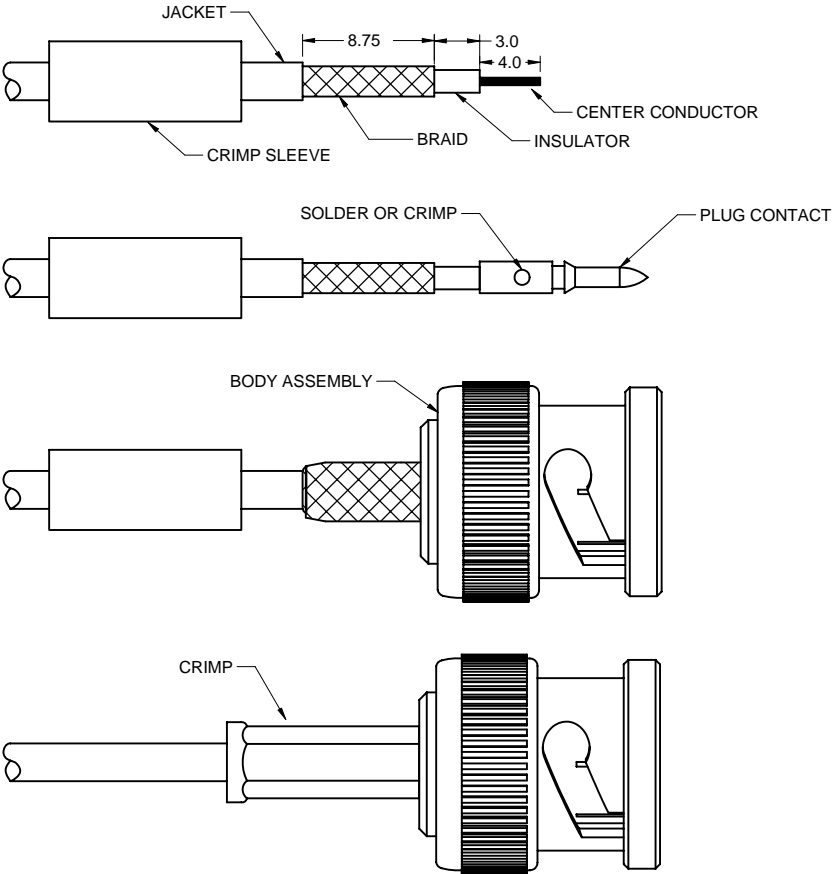
ASSEMBLY INSTRUCTIONS

1. IDENTIFY CONNECTOR PARTS. (3 PIECE PARTS.)
2. STRIP CABLE TO DIMENSIONS SHOWN. DO NOT NICK BRAID OR CENTER CONDUCTOR. TIN CENTER CONDUCTOR IF CONTACT WILL BE SOLDER ATTACHED, DO NOT TIN CENTER CONDUCTOR IF CONTACT IS TO BE CRIMP ATTACHED, A WIRE STRIPPER OF SLIDE CRIMP SLEEVE ONTO JACKET OF CABLE
3. ASSEMBLE CONTACT ONTO CABLE AS SHOWN.

SOLDER ATTACHMENT: SOLDER CONTACT TO CENTER CONDUCTOR THROUGH HOLE USING A MINIMUM AMOUNT OF SOLDER FOR A GOOD JOINT.

CRIMP ATTACHMENT: CRIMP CONTACT TO CENTER CONDUCTOR USING RECOMMENDED CRIMP HEX. CRIMP SHOULD BE MADE AT END OF CONTACT.

4. FLARE BRAID AND SLIDE BODY ASSEMBLY OVER CONTACT AND UNDER BRAID.THEN SEAT BODY ASSEMBLY FIRMLY ONTO CONTACT, THE CABLE MAY HAVE TO BE HELD IN A CLAMPING FIXTURE.. ARRANGE BRAID UNIFORMLY AROUND CRIMP STEM. SLIDE CRIMP SLEEVE FORWARD AND CRIMP USING RECONMMENDED CRIMP HEX.



THIS DRAWING TO BE INTERPRETED
PER ANSI Y 14.5M - 1994

COMPANY CONFIDENTIAL

TOLERANCE UNLESS OTHERWISE SPECIFIED		DRAWN BY BETTY.YU	DATE 09-22-05
DECIMALS	mm	CHECKED BY IVON.WANG	DATE 09-26-05
X	+ 0.5	APPROVED BY THOMAS	DATE 09-26-05
X.X	+ 0.2		
X.XX	+ 0.05		
ANGLES	+ 0.5°	U/M	mm

THIS DRAWING WAS PRODUCED BY COMPUTER,
DO NOT SCALE DRAWING OR UPDATE MANUALLY.

EMERSON Network Power		Connectivity Solutions	
TITLE STRAIGHT BNC CRIMP PLUG FOR RG316 STYLE CABLE			

SHEET 2 OF 2	DRAWING NO. CPMC-88-19	SIZE C
-----------------	---------------------------	-----------