

# Data sheet Illuminated pushbutton Ø 22 mm stainless steel 304, with symbol.

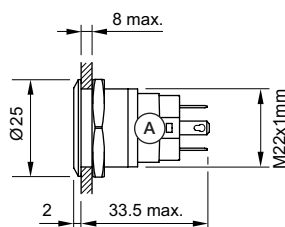
Part No.: 82-6151.1AA4.B006

## Technical data



Terminal	Soldering terminal, 2.8 x 0.5 mm
Shape of illumination	Symbol
Operating voltage	24 V DC
Operating Travel	ca. 3 mm
Lens illumination	illuminative
Lens colour	Silver
Lens shape	flush
Lens material	Plastic metalised
Lens optics	opaque
Front bezel shape	flush
Front bezel material	Stainless steel
Weight	0.025 kg
Contact material	Silver
Illumination colour	Red/Green
Kind of illumination	Bi-colour-LED
Switching action	Momentary
Switching system	Snap-action switching element
Symbol	Door open
Contacts	1 FS
Operating temperature	- 30 °C ... + 70 °C
Approbations	CB, CCC, C UL, UL
Operating force	4 ... 7 N
Climate resistance	Damp heat, 21 days according to IEC 60512-11

## Dimensions



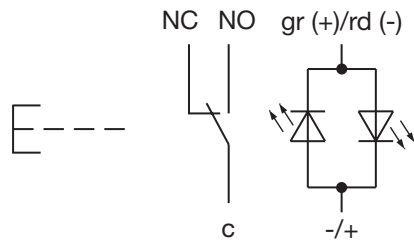
## Mounting cut-outs

---



## Wiring diagrams

---



## Component layouts

---

