

EAO – Your Expert Partner for Human Machine Interfaces

02-617.011 - Illuminated pushbutton actuator

02-617.011 - Illuminated pushbutton actuator



Attention: The preview is based on a sample product. This can differ from your current configuration.

Mounting

Mounting cut-out 21,2 mm x 29,2 mm
Design flush

Front

Front dimension 24 mm x 36 mm
Front bezel colour black
Front bezel material Plastic
Front shape rectangular

Other Attributes

Weight 0,055 kg

Operating-/Indication part

Lens illumination illuminative

IP-Rating

Front protection IP40

Connection Method

Terminal Screw terminal

Actuator

Switching action Momentary
Housing colour black
Housing material Plastic

Switching element

Contacts 2 C
Contact material Silver
Switching voltage 400 V AC
Switching current 10 A
Switching system Snap-action switching element

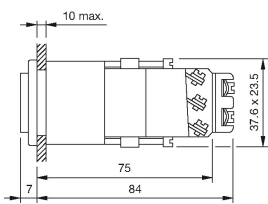
Function

Illuminated pushbutton

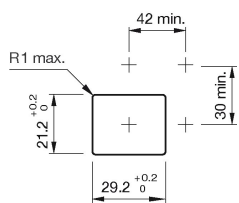
EAO – Your Expert Partner for Human Machine Interfaces

02-617.011 - Illuminated pushbutton actuator

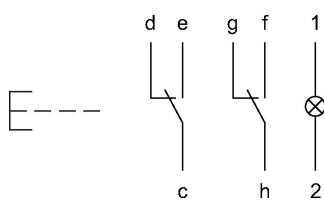
Dimensions



Mounting cut-outs



Wiring diagram



Legend

Contacts: C = Changeover

Switching action: B = Momentary