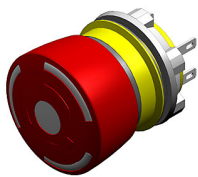


# EAO – Your Expert Partner for Human Machine Interfaces

84-5040.0020 - Emergency-stop switch complete, foolproof EN IEC 60947-5-5

## 84-5040.0020 - Emergency-stop switch complete, foolproof EN IEC 60947-5-5



*Attention: The preview is based on a sample product. This can differ from your current configuration.*

### Mounting

Mounting cut-out	Ø 22,3 mm
Design	raised
Behind panel depth	18 mm

### Front

Front dimension	Ø 32 mm
Front shape	round

### Other Attributes

Weight	0,028 kg
--------	----------

### Operating-/Indication part

Lens material	Plastic
Lens colour	red
Lens profile	Mushroom
Lens optics	opaque
Lens illumination	non-illuminative

### IP-Rating

Front protection	IP65
------------------	------

### Connection Method

Terminal	Plug 2.8 x 0.5 mm
----------	-------------------

### Actuator

Switching action	Maintained
Housing colour	yellow
Housing material	Plastic

### Switching element

Switching voltage	250 V AC/DC
Switching current	5 A
Switching system	Slow-make switching element
Contacts	2 NC
Contact material	gold-plated silver

### Illumination

LED colour	
------------	--

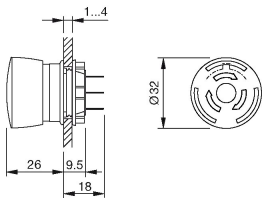
### Function

Emergency stop switch	
-----------------------	--

# EAO – Your Expert Partner for Human Machine Interfaces

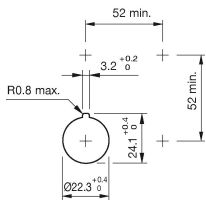
84-5040.0020 - Emergency-stop switch complete, foolproof EN IEC 60947-5-5

## Dimensions

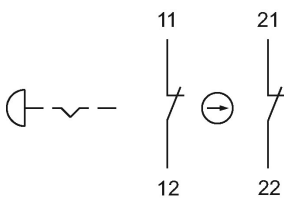


P = Plug-in terminal 2.8 x 0.5 mm

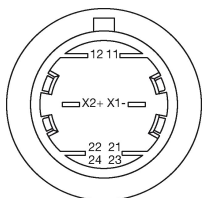
## Mounting cut-outs



## Wiring diagram



## Component layout



## Additional information

Twist to unlock clockwise

Position indication ring black

Application as per DIN EN ISO 13850 and EN 60204-1

Standard version: Flat ribbon-cable length 300 mm or plug-in terminal 2.8 x 0.5 mm

Other options on request: Customisation of flat ribbon-cable and connectors

## Legend

Contacts: NC = Normally closed, NO = Normally open