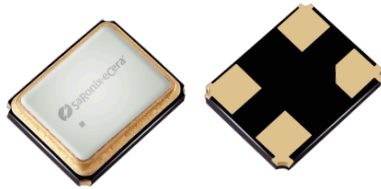


# Quartz Crystal Ceramic SMD

**FLQ**



3.2 x 2.5mm Ceramic SMD

## Product Features

- Rugged AT-cut crystal construction
- Miniature 3.2 x 2.5mm ceramic package
- Available on tape & reel; 8mm tape, 3000 units per reel
- Pb-free and RoHS/Green compliant

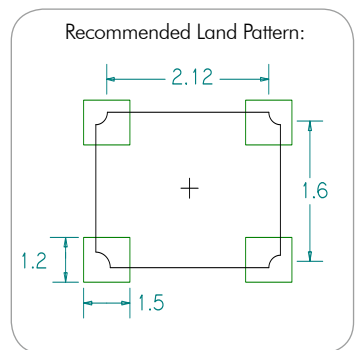
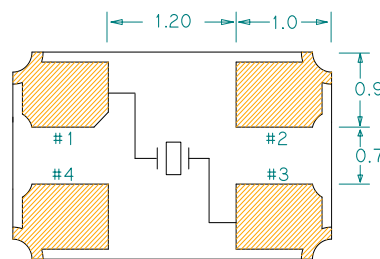
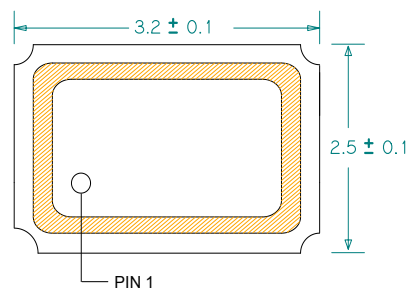
## Product Description

The 4-pad FL Series seam seal devices incorporate a sub-miniature AT-cut crystal resonator housed in a standard 3.2 x 2.5mm ceramic package. These compact crystal are ideal for surface mounting in densely populated PCB applications.

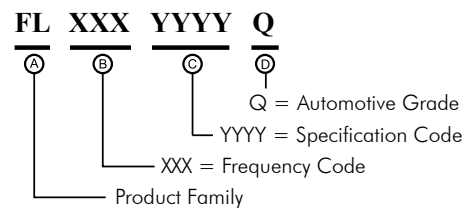
## Applications

- GSM, CDMA, GPRS
- PCMCIA Cards
- Portable / hand-held PCs
- Notebook PC
- HDD
- GPS
- Bluetooth
- Wireless LAN
- UWB
- ZigBee
- Digital Tuner

## Package: (Dimensions are in mm)



## Part Ordering Information:



Following the above format, SaRonix-eCera part numbers will be assigned upon confirmation of exact customer requirements.

### Frequency Range:

- 12.0000 MHz to 66.0000 MHz (Fundamental)

### Characteristics at 25°C ±3°C:

- Frequency Calibration Tolerance: ±10ppm to ±50ppm
- Load Capacitance: 7 to 32pF or Series Resonance
- Effective Series Resistance (ESR):
  - 12.0000MHz to 19.9999MHz: 80Ω max
  - 20.0000MHz to 29.9999MHz: 60Ω max
  - 30.0000MHz to 66.0000MHz: 40Ω max
- Drive Level: 10μW typ. 100μW max
- Shunt Capacitance: 5pF Max.

### Temperature Range:

- Operating: -20 to +70°C; -40 to +85°C (AECQ Grade 3)
- Storage: -55 to +125°C

### Temperature Stability:

- ±10ppm to ±50ppm (-20 to +70°C )
- ±15ppm to ±50ppm (-40 to +85°C)

### Aging at 25°C, First Year:

- ±3ppm Max

### Reflow Temperature:

- 260°C Max, 10 seconds max

For the latest product information visit: <http://www.pericom.com/products/timing/crystals/FLQ>

For soldering reflow profile and reliability test ratings go to: <http://www.pericom.com/pdf/sre/reflow.pdf>

For tape and reel information go to: [http://www.pericom.com/pdf/sre/tr\\_3225\\_xo.pdf](http://www.pericom.com/pdf/sre/tr_3225_xo.pdf)