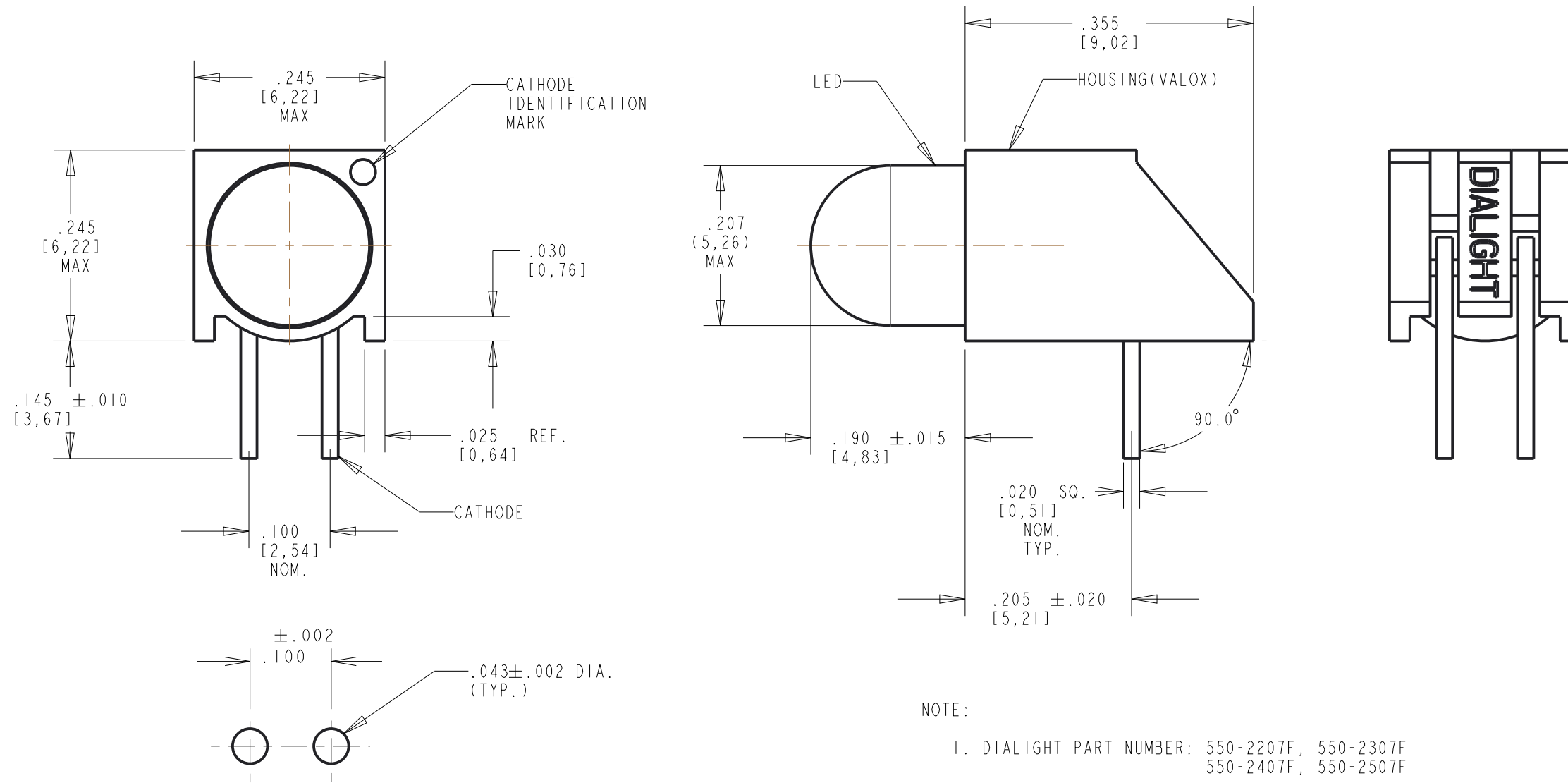



PART NUMBER	LED COLOR
550-2207F	GREEN DIFF.
550-2307F	YELLOW DIFF.
550-2407F	RED DIFF.
550-2507F	ORANGE DIFF.

LED ELECTRO-OPTICAL CHARACTERISTICS								
PARAMETER	RED	GREEN	YELLOW	ORANGE	UNITS	TEST COND.	SPECS	
PEAK FORWARD CURRENT (1ms, 1/5 DUTY)	60	60	60	90	mA	N/A	ABSOLUTE MAXIMUM RATINGS AT TA = 25°C	
POWER DISSIPATION	60	75	52	135	mW			
FORWARD DC CURRENT	20	25	20	30	mA			
OPERATING TEMPERATURE	-25 TO +85		-40 TO +85	-40 TO +100	°C			
STORAGE TEMPERATURE	-30 TO +100		-40 TO +100	-40 TO +100	°C			
LEAD SOLDERING TEMP. (1/16" FROM CASE)	260°C FOR 5 SECONDS				°C			
FORWARD VOLTAGE	TYP	2.2	2.1	2.1	1.9	V	IF = 10 mA IF = 20 mA (YELLOW)	
	MAX	2.5	3.0	2.6	2.4			
REVERSE BREAKDOWN VOLTAGE MIN.	5				V	IF = 100 uA	OPERATING CHAR. AT TA = 25°C	
PEAK WAVELENGTH	650	563	585	600	nm	MEAS. AT PEAK		
DOMINATE WAVE LENGTH (TYP.)	—	—	590	602	nm			
LUMINOUS INTENSITY	TYP	2.2	3.6	40	4.0	mcd		@ RATED CURRENT
	MAX	6.3	10	100	7.0			
RATED CURRENT	10				mA	N/A		

REV	ECN NO	REVISIONS	DRN	CKD	APP	DATE
A	—	NEW RELEASE	TWC	-	-	11-7-05
B	—	UPDATE CHARACTERISTICS TABLE ADDED TOLERANCES TO SIDE VIEW	JTD	SM	NO	1-5-12
C	92288	UPDATED YELLOW SPEC	LD		NO	5-5-22



P.C.B. HOLE PATTERN

THIS DRAWING AND THE CONTENTS HEREIN ARE CONFIDENTIAL AND THE SOLE PROPERTY OF DIALIGHT CORP. REPRODUCTION OF THIS DRAWING OR CONSTRUCTION OF ANY PARTS WITHIN THIS DRAWING ARE FORBIDDEN WITHOUT THE WRITTEN CONSENT OF DIALIGHT CORP.		
SCALE: 6.000	DRAWING NUMBER	REV
ALL DIM'S: INCH (mm)	C-17303	C
TOLERANCES: UNLESS OTHERWISE SPECIFIED	TITLE HIGH EFFICIENCY CBI WITH STANDOFF, RoHS COMPLIANT	
FRACTIONS: ±1/64 DECIMALS (.XX): ±.01 DECIMALS (.XXX): ±.005 DECIMALS (.XXXX): ±.0005 ANGLES: ±1°	MATERIAL	
FINISH	 1501 ROUTE 34 SOUTH FARMINGDALE, NJ 07727 (732) 919-3119 www.dialight.com	
FSCM 83330	SHEET 1 OF 1	FAMILY TABLE: