



# TDR SERIES

## VERTICAL 3-PHASE 3-WIRE FILTERS

### COMPONENTS

PART NO.	$\Sigma C_x(\mu F)$	$\Sigma C_y(\mu F)$	$\Sigma L(mH)$	R1(M $\Omega$ )	R2(M $\Omega$ )
07TDRT1W4	4	1.5	4.5	1.5	0.68
16TDRT1W4	5.9		3.0		
30TDRT1W4	6.6	2.2	2.0		
42TDRT1W4		2.3	1.5		
55TDRT1W4			1.1		

### INTRODUCTIONS

1. Applications: Electric equipment, UPS, machine tool, copy machine, automation equipment, robot, AC motor drive
2. Voltage rating: 480VAC
3. Operating frequency: 50/60Hz

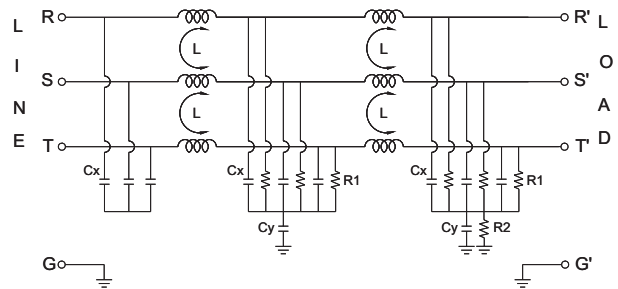
### MINIMUM INSERTION LOSS IN dB

COMMONMODE(L-G) IN 50 OHM SYSTEM						
PART NO.	FREQUENCY-MHz					
	.15	.50	1.0	5.0	10	30
07TDRT1W4	25	60	60	60	55	35
16TDRT1W4	20	60	60	60	55	35
30TDRT1W4	20	55	55	55	50	35
42TDRT1W4	20	55	55	55	50	35
55TDRT1W4	20	55	55	55	50	35

DIFFERENTIALMODE(L-L) IN 50 OHM SYSTEM						
PART NO.	FREQUENCY-MHz					
	.15	.50	1.0	5.0	10	30
07TDRT1W4	35	65	65	65	60	40
16TDRT1W4	35	65	65	65	60	40
30TDRT1W4	35	65	65	65	60	40
42TDRT1W4	30	60	60	60	50	40
55TDRT1W4	30	60	60	60	50	40

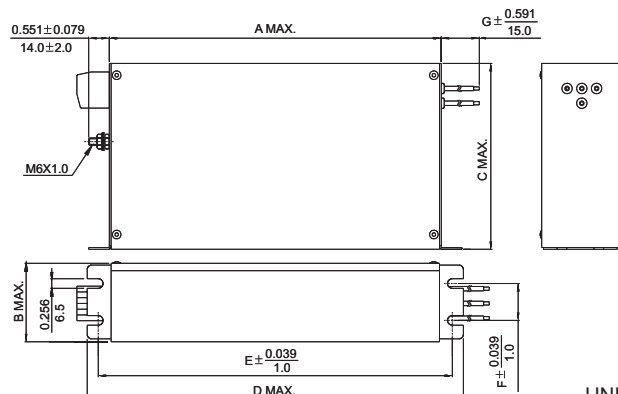
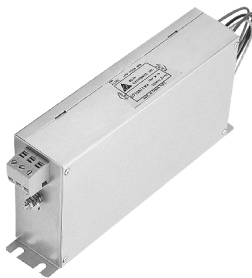
### ELECTRICAL SCHEMATIC



### SERIES DIMENSIONS

PART NO.	DIMENSIONS IN INCHES/mm						
	A	B	C	D	E	F	G
07TDRT1W4	8.937	2.047	5.039	10.118	9.449	0.984	11.811
	227.0	52.0	128.0	257.0	240.0	25.0	
16TDRT1W4	10.906	2.244	5.669	12.087	11.417	1.181	300.0
	227.0	57.0	144.0	307.0	290.0	30.0	
30TDRT1W4	12.087	2.440	5.984	13.268	12.598	1.378	15.748
	307.0	62.0	152.0	337.0	320.0	35.0	
42TDRT1W4	11.890	2.835	7.362	13.031	12.362	1.772	19.685
	302.0	72.0	187.0	331.0	314.0	45.0	
55TDRT1W4		3.228	187.0			2.165	500.0
		82.0				55.0	

### MECHANICAL CONSTRUCTION



UNIT: INCH  
mm



# TDR SERIES

## VERTICAL 3-PHASE 3-WIRE FILTERS

### COMPONENTS

PART NO.	Cx(uF)	Cy(uF)	L(mH)	L1(uH)	R(MΩ)
10TDRT2	1.0	0.47	2.8	-	1.0
18TDRT2		0.68	2.9		
25TDRT2	2.2	1.0	1.9		
36TDRT2	1.0	0.47	0.396	7.0	
50TDRT2	2.2	1.0	0.275	5.1	

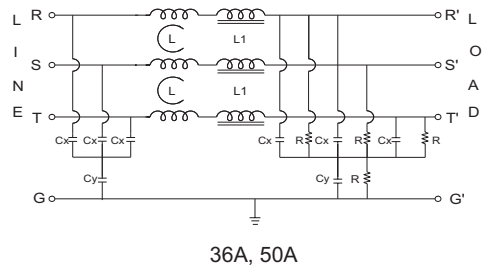
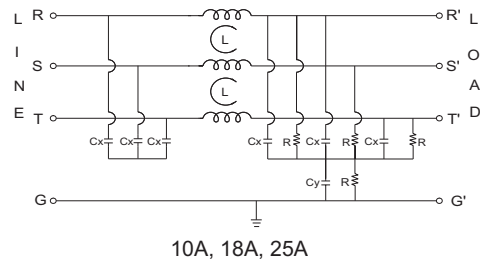
### MINIMUM INSERTION LOSS IN dB

COMMON MODE (L-G) IN 50 OHM SYSTEM										
PART NO.	FREQUENCY-MHz									
	.01	.05	.10	.15	.50	1.0	5.0	10	30	
10TDRT2	5	25	40	45	55	50	40	30	30	
18TDRT2	10	30	40	50	50	50	40	35	20	
25TDRT2	10	30	45	55	45	45	40	30	20	
36TDRT2	5	25	45	55	50	45	40	35	35	
50TDRT2	5	35	55	55	50	45	40	40	30	
DIFFERENTIAL MODE (L-L) IN 50 OHM SYSTEM										
10TDRT2	5	15	10	30	55	50	40	30	30	
18TDRT2	5	12	25	35	50	50	50	40	25	
25TDRT2	10	10	40	45	45	45	40	35	25	
36TDRT2	5	10	20	30	50	45	40	40	40	
50TDRT2	5	10	35	45	50	45	40	40	30	

### INTRODUCTIONS

1. Applications: Electric equipment, UPS, machine tool, copy machine, automation equipment, robot, AC motor drive
2. Voltage rating: 500VAC
3. Operating frequency: 50/60Hz

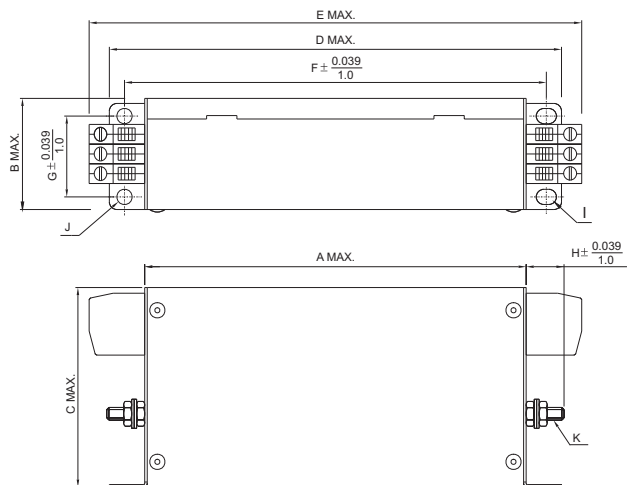
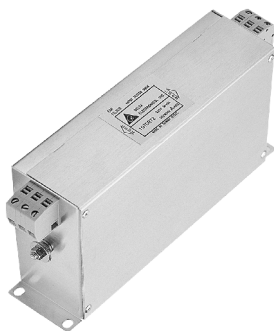
### ELECTRICAL SCHEMATIC



### SERIES DIMENSIONS

PART NO.	DIMENSIONS IN INCHES/mm										
	A	B	C	D	E	F	G	H	I	J	K
10TDRT2	6.024 153.0	1.772 45.0	3.189 81.0	7.087 180.0	7.756 197.0	6.575 167.0	1.260 32.0	0.591	0.236 x 0.315 6.0 x 8.0	0.236 Ø6.0	M5x0.8
18TDRT2	7.992	2.205	4.567	9.016	9.724	8.622	1.655	15.0			
25TDRT2	203.0	56.0	116.0	229.0	247.0	219.0	42.0				
36TDRT2	9.528	2.953	6.417	10.709	11.496	10.236	2.362	0.787	0.276 x 0.394 7.0 x 10.0	0.276 Ø7.0	M6x1.0
50TDRT2	242.0	75.0	163.0	272.0	292.0	260.0	60.0	20.0			

### MECHANICAL CONSTRUCTION



UNIT: INCH/mm

THREE-PHASE FILTERS