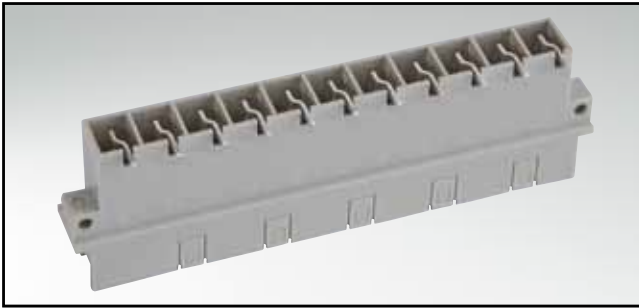


TYPE H

Male connector – angled – 11 positions

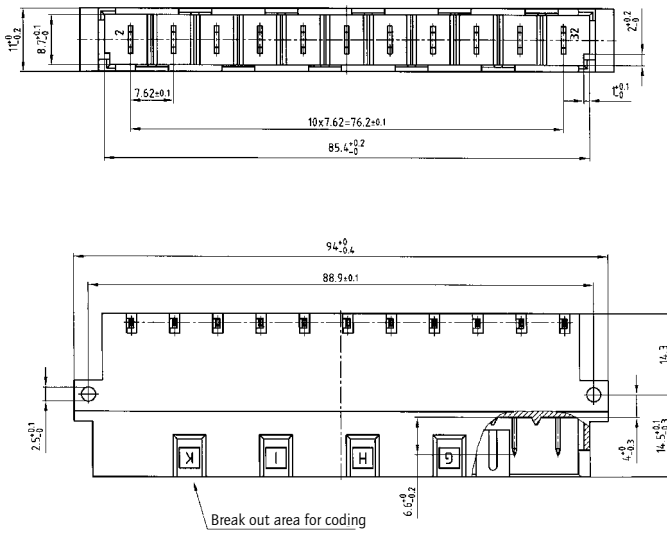


RoHS compliant

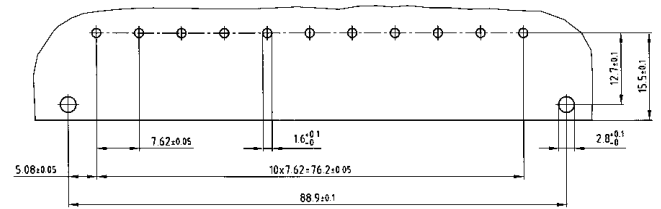
DESCRIPTION

- Solder pin
- With breakout area for coding
- Contact plating: silver
- Premating contacts in row "z" available

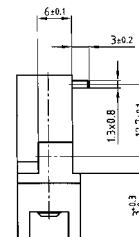
PRODUCT DRAWING



PCB-hole pattern



Solder pin angled



ORDER DATA

(Dim. = mm)

No. of Pos.	Premating contact	Solder pin angled
11		121 E 10949 X
10+1	z 32	121 E 10959 X