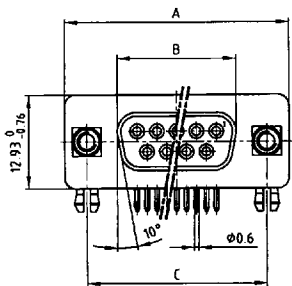


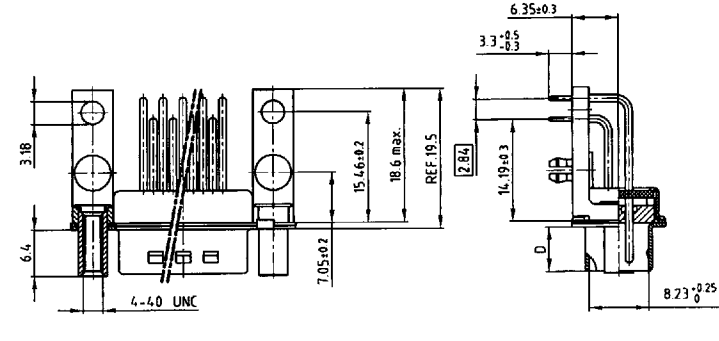
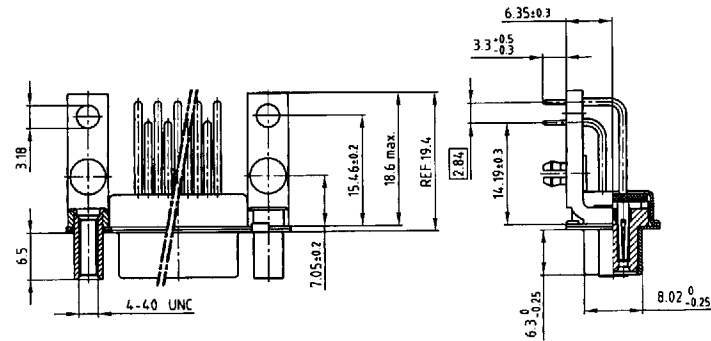
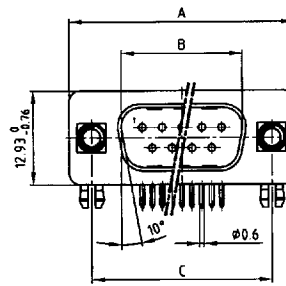
•590 inch

Solder pin angled with threaded lock, metal bracket and clip

Socket connector



Plug connector



snap for PCB  $\varnothing 3.1 \pm 0.1$ , t = 1.6 mm

snap for PCB  $\varnothing 3.1 \pm 0.1$ , t = 1.6 mm

Kat 1 i S4A

No. of pos.	A - 0,76	B - 0,25	C
9	31,19	16,46	25,00 $\pm 0.12$
15	39,52	24,79	33,30 $\pm 0.15$
25	53,42	38,50	47,04 $\pm 0.13$
37	69,70	54,96	63,50 $\pm 0.13$

Kat 1 i S5A

No. of pos.	A - 0,76	B + 0,25	C	D - 0,30
9	31,19	16,79	25,00 $\pm 0.12$	6,12
15	39,52	25,12	33,30 $\pm 0.15$	6,12
25	53,42	38,84	47,04 $\pm 0.13$	5,99
37	69,70	55,30	63,50 $\pm 0.13$	5,99

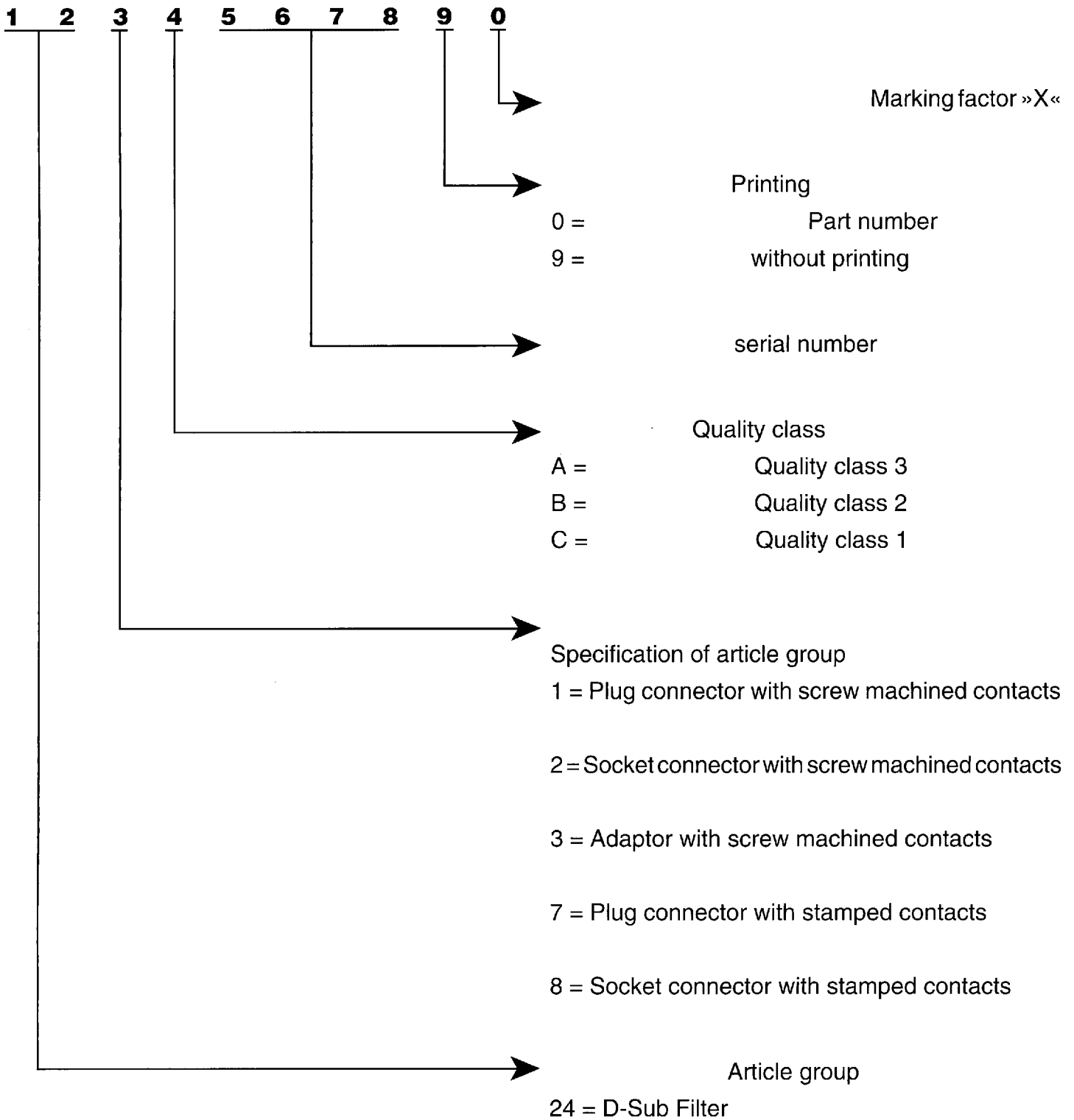
## Part numbers

No. of Pos.	Socket connector – Solder pin angled			
	Typ 1	Typ 3	Typ 4	Typ 5
9	242 A 19450 X	242 A 19410 X	242 A 19370 X	242 A 19330 X
15	242 A 19460 X	242 A 19420 X	242 A 19380 X	242 A 19340 X
25	242 A 19470 X	242 A 19430 X	242 A 19390 X	242 A 19350 X
37	242 A 19480 X	242 A 19440 X	242 A 19400 X	242 A 19360 X

No. of Pos.	Plug connector – Solder pin angled			
	Typ 1	Typ 3	Typ 4	Typ 5
9	241 A 17860 X	241 A 17820 X	241 A 17780 X	241 A 17740 X
15	241 A 17870 X	241 A 17830 X	241 A 17790 X	241 A 17750 X
25	241 A 17880 X	241 A 17840 X	241 A 17800 X	241 A 17760 X
37	241 A 17890 X	241 A 17850 X	241 A 17810 X	241 A 17770 X

# Filter connectors

## Part number



## Order example

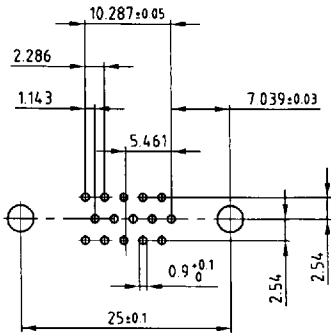
Plug connector solder pin angled 25 pos.		
Quality class	with screw machine contacts	with stamped contacts
<b>3</b>	241 <b>A</b> 12900 X	247 <b>A</b> 12900 X
<b>2</b>	241 <b>B</b> 12900 X	247 <b>B</b> 12900 X
<b>1</b>	241 <b>C</b> 12900 X	247 <b>C</b> 12900 X

# Hole pattern for angled solder pins D-Sub filter high density

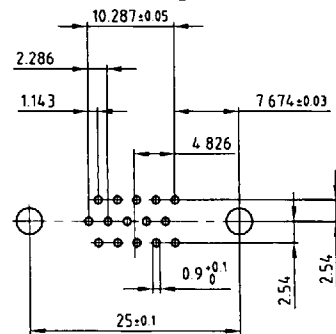
Socket connector solder pin angled

Plug connector solder pin angled

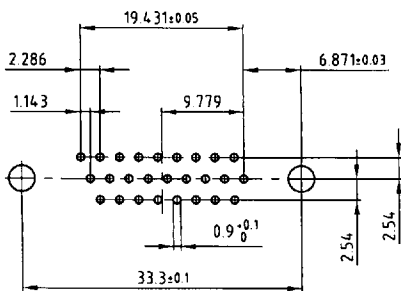
15 pos



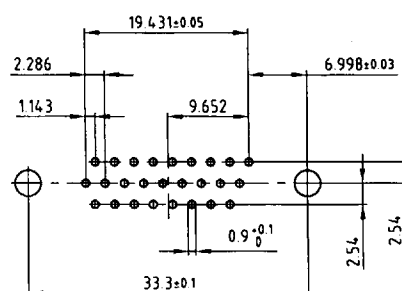
15 pos



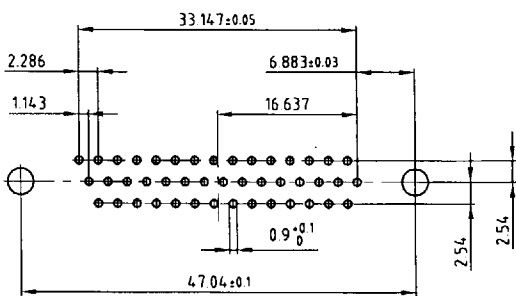
26 pos



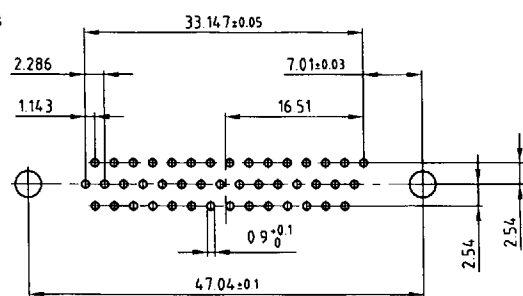
26 pos



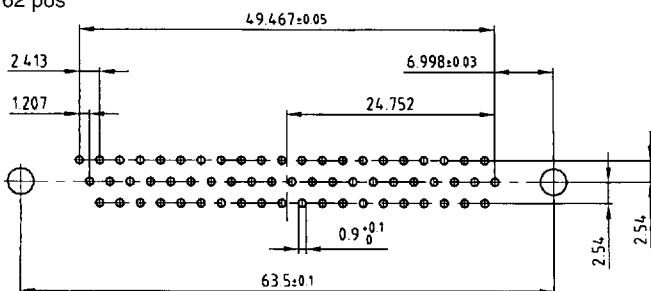
44 pos



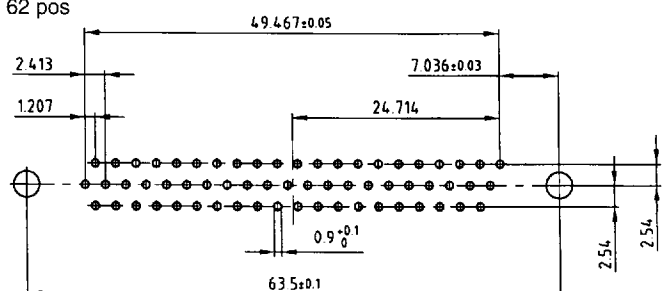
44 pos



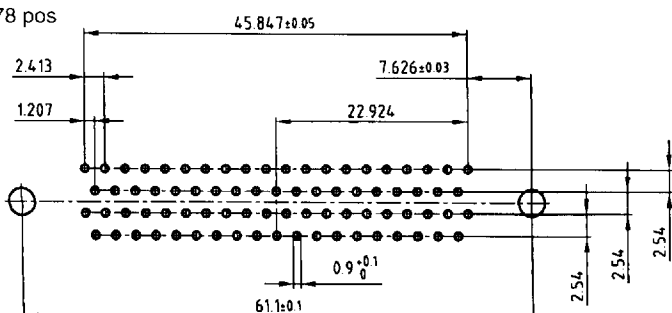
62 pos



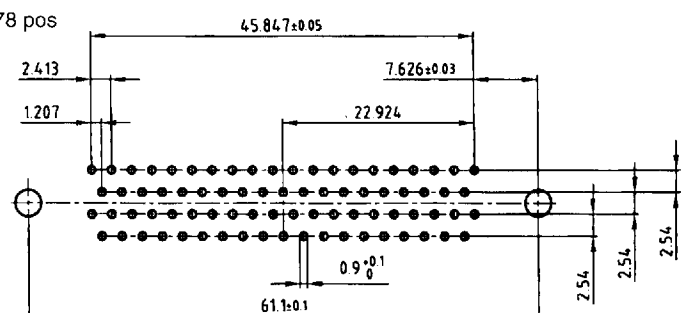
62 pos



78 pos



78 pos



<b>Technical Data</b>	<b>D-Sub Standard 9,15,25,37,50 pos.</b>	<b>D-Sub High Density 15,26,44,62 pos.</b>
<b>Insulators</b>	Polyester GF UL 94 V-0	PA 6.6 GF 25 UL 94 V-0
<b>Contacts</b>	Copper alloy	
<b>Contact finish</b>	hard-gold-plated over nickel, solder area tin plated	
<b>Shell</b>	steel tin plated over nickel	
<b>Working voltage</b>	100 V <sub>DC</sub> Insulation Gr. A according to VDE 0100 *	60 V <sub>DC</sub> Insulation Gr. A according to VDE 0100 *
<b>Dielectric stand. voltage</b>	424 V <sub>DC</sub> 707 V <sub>DC</sub> standard      „high voltage“	424 V <sub>DC</sub>
<b>Contact resistance</b>	max. 10mΩ with no load Δ R max. 10 mΩ with load according to din 41652 part. 2	
<b>Insulation resistance</b>	depending on quality class 1 ≥ 10 <sup>12</sup> Ω      2 ≥ 10 <sup>11</sup> Ω      3 ≥ 10 <sup>8</sup> Ω	
<b>Current rating</b>	straight version: 5,0 A (20° C) angled version: 2,5 A (20° C)	straight version: 3,0 A (20° C) angled version: 2,5 A (20° C)
<b>Voltage surge 10/750 μs</b>	300 V      500 V standard      „high voltage“	300 V standard
<b>Mating-/ unmating forces</b>	9-pol. ≤ 30/29 N    15-pol. ≤ 50/33 N 25-pol. ≤ 83/56 N    37-pol. ≤ 123/82 N 50-pol. ≤ 167/111 N	15-pol. ≤ 50/33 N    26-pol. ≤ 83/56 N 44-pol. ≤ 110/74 N
<b>Temperature range storage</b>	- 55° C    /to + 125° C	
<b>Temperature range working</b>	- 25° C    /to + 105° C	- 25° C    /to + 85° C
<b>Humidity</b>	40° C / 85% relative	
<b>Capacitor values</b>	/type 1 min. 144 pF max. 216 pF /type 2 min. 240 pF max. 360 pF /type 3 min. 296 pF max. 444 pF /type 4 min. 664 pF max. 996 pF /type 5 min. 1040 pF max. 1560 pF	/type 3 min. 296 pF max. 444 pF /type 4 min. 664 pF max. 996 pF
<b>Quality class</b>	/Quality class 3 = 50 mating cycles /Quality class 2 = 200 mating cycles /Quality class 1 = 500 mating cycles	