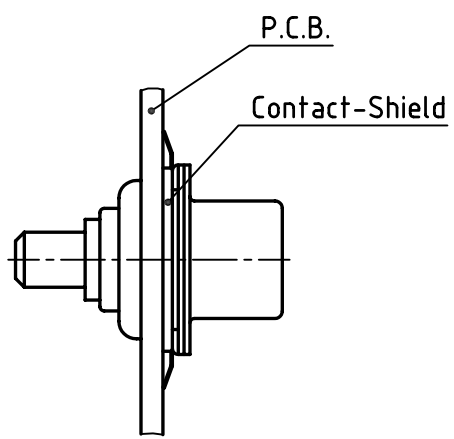
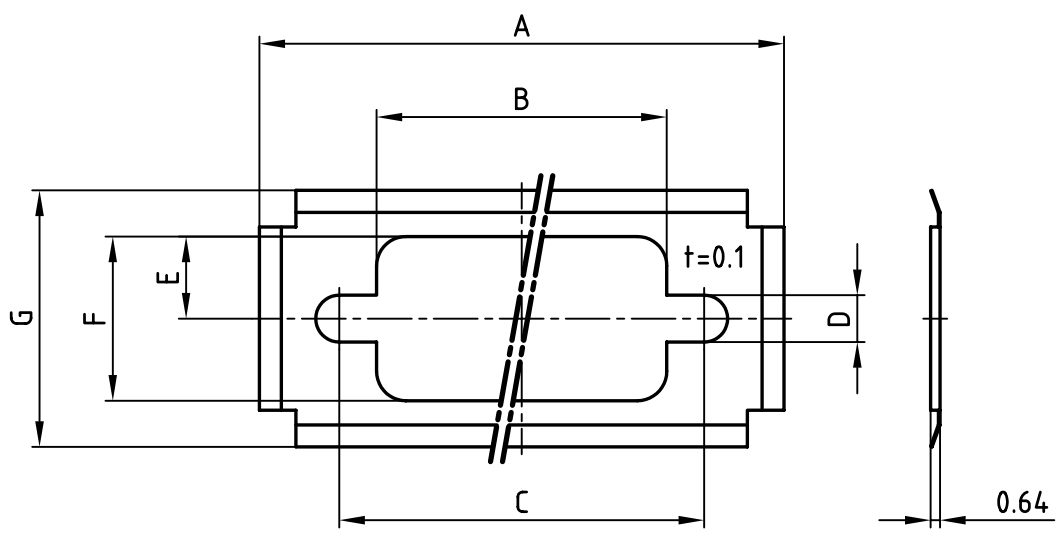


used for: D-SUB



No. of pos.	A	B	C	D	E	F	G	Part NO.
9	35.8	19.8	24.9	3.2	5.6	11.2	17.5	160X10839X
15	44.2	28.2	33.3	3.2	5.6	11.2	17.5	160X10849X
25	57.9	41.9	47.0	3.2	5.6	11.2	17.5	160X10859X
37	74.4	58.2	63.5	3.2	5.6	11.2	17.5	160X10869X
50	72.1	53.6	61.2	6.1	7.1	13.9	20.3	160X10879X

Directive 2002/95/EC
"RoHS"
Compliant

THIS DRAWING MAY NOT BE COPIED OR REPRODUCED IN ANY WAY, AND MAY NOT BE PASSED ON TO A THIRD PARTY WITHOUT WRITTEN PERMISSION.
OWNERSHIP AND COPYRIGHT OF CONEC GmbH
DO NOT ALTER CAD DRAWING BY HAND

CONEC CORPORATION BRAMPTON, ONTARIO		
2001	date	name
drawn	19.02.	Parei
appd.	19.02.	E. Mickenbecker
norm		
d-old		
rev.	description	date
		name

tolerance

scale: 2:1

material: STAINLESS STEEL

title: EMI/RFI D-SUB CONNECTOR SHIELD
9-50pos.

dwg no: AutoCAD 2000

CONEC[®]

part no: SEE TABLE

scale:	2:1
material:	STAINLESS STEEL
title:	EMI/RFI D-SUB CONNECTOR SHIELD 9-50pos.
dwg no:	AutoCAD 2000
	16K1A140A
part no:	SEE TABLE

DIN-A
4
sh: 1/1