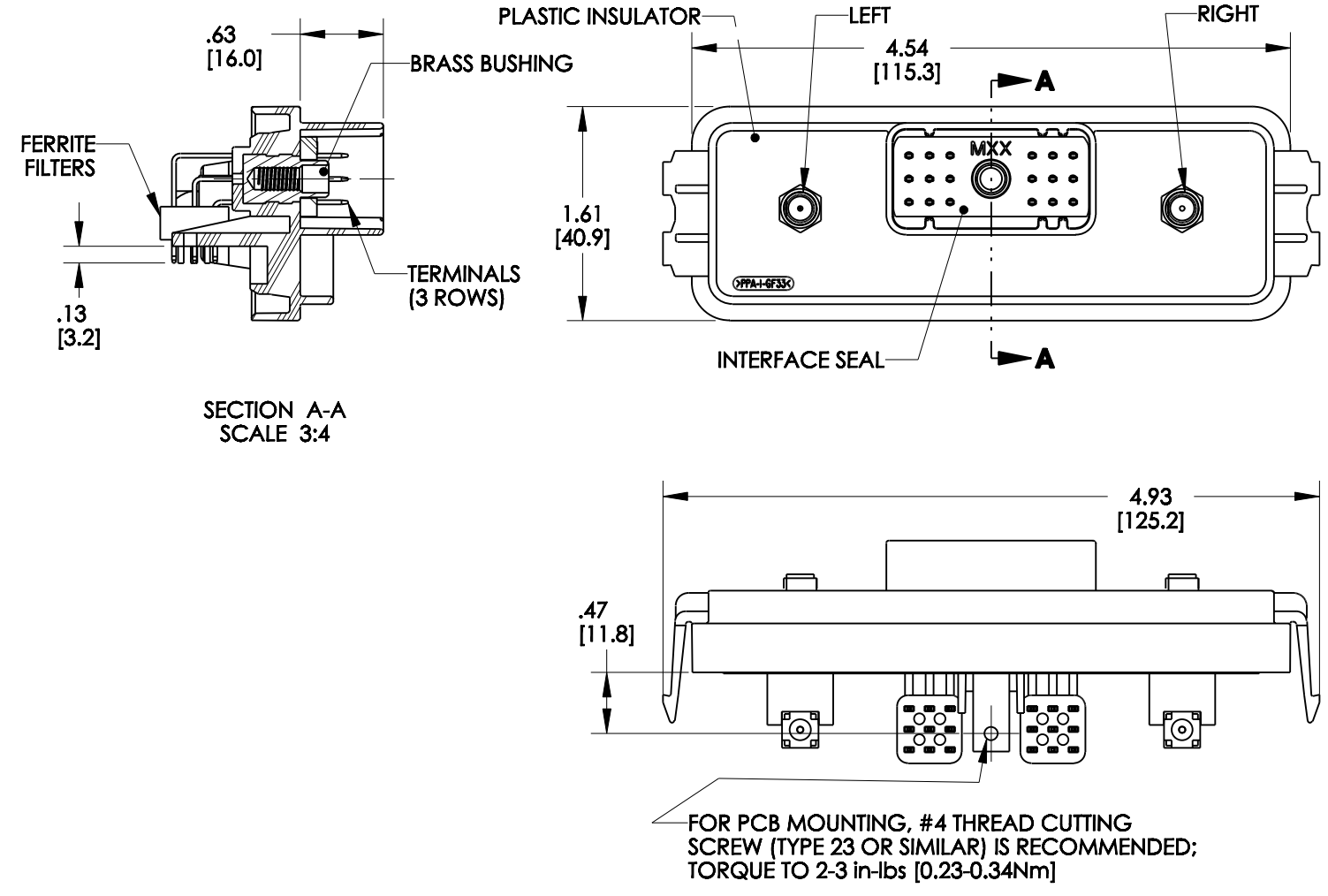


**DRAWING REVISIONS**  
(RELEASE DATE ON FILE)

REV	DOCUMENT	APP	APPROVAL DATE
D	CO 2206	V.RICE	04/01/13

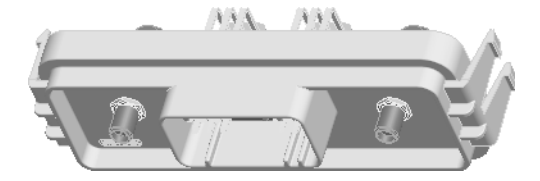


**CINCH P/N: 5810618002 SHOWN  
(18 POS HEADER WITH FILTERS)**

RP SMA = REVERSE POLARITY SMA SMA = STANDARD POLARITY SMA LEFT RIGHT	HEADER	I/O	FERRITE	LEFT RF	RIGHT RF
	5810618001	18	NO	RP SMA	SMA
	5810618002	18	YES	RP SMA	SMA
	5810618003	18	NO	N/A	SMA
	5810618004	18	YES	N/A	SMA
	5810618005	18	NO	RP SMA	N/A
	5810618006	18	YES	RP SMA	N/A
	5810618007	18	NO	RP SMA	RP SMA
	5810618008	18	YES	RP SMA	RP SMA
	5810618009	18	NO	SMA	SMA
	5810618010	18	YES	SMA	SMA

**NOTES:**

1. ALL DIMENSIONS ARE REFERENCE ONLY.  
DIMENSIONS ARE IN INCHES; [BRACKETED DIMENSIONS ARE IN mm]
2. MATERIALS:  
INSULATOR: 30% GLASS FILLED POLYMER, COLOR BLACK  
SMA: BODY: BRASS, NICKEL PLATED  
CONTACT: PHOSPHOR BRONZE, GOLD PLATING OVER NICKEL  
INSULATOR: PTFE  
INTERFACE SEAL: SILICONE RUBBER, COLOR BLUE  
INSULATOR: 30% GLASS FILLED POLYMER, COLOR BLACK  
BUSHING: BRASS ALLOY, UNPLATED, 10-24 UNC THREAD  
TERMINAL BLADES: 1.5 mm BRASS WITH TIN OVER NICKEL PLATING  
FILTERS: FERRITE BLOCKS
3. ALL HEADERS ARE REFLOW OR WAVE SOLDERING PROCESS COMPATIBLE, AND ROHS COMPLIANT
4. SUGGESTED PCB THICKNESS: .062 [1.57]
5. IF USING FERRITE FILTER VERSION, TRACES SHOULD BE AVOIDED UNDER THE FERRITE SPACER FEET. SEE "PCB TOP SIDE PIN AREA WITH FERRITES DETAIL" - PAGE 2.
6. MATES WITH CINCH SHS PUSH-TO-SEAT HARNESS CONNECTOR P/N: 5810118023
7. TORQUE SCREW OF MATING CONNECTOR TO 15 - 20 in-lbs [1.69 - 2.26 Nm]

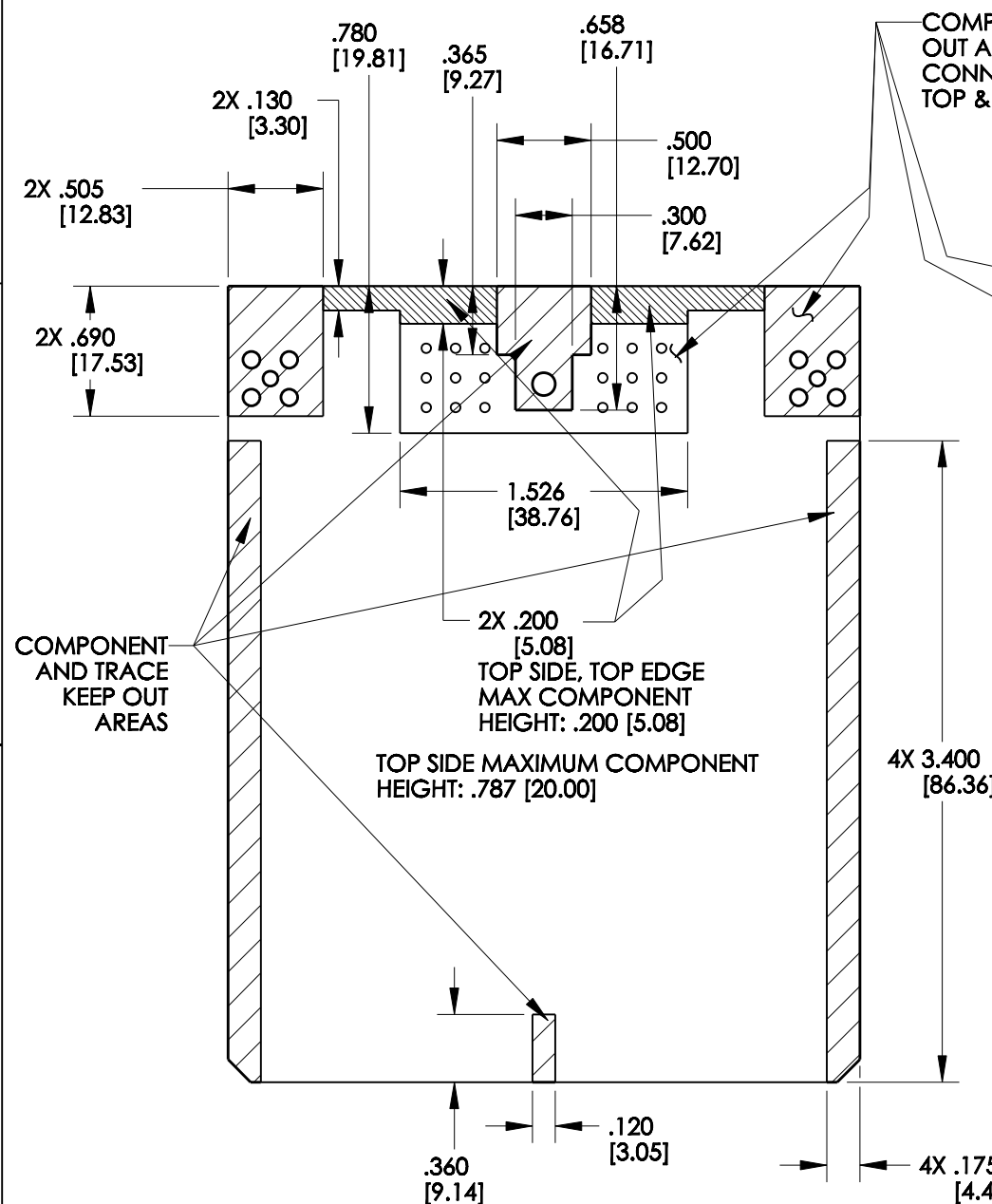


SCALE 1:2

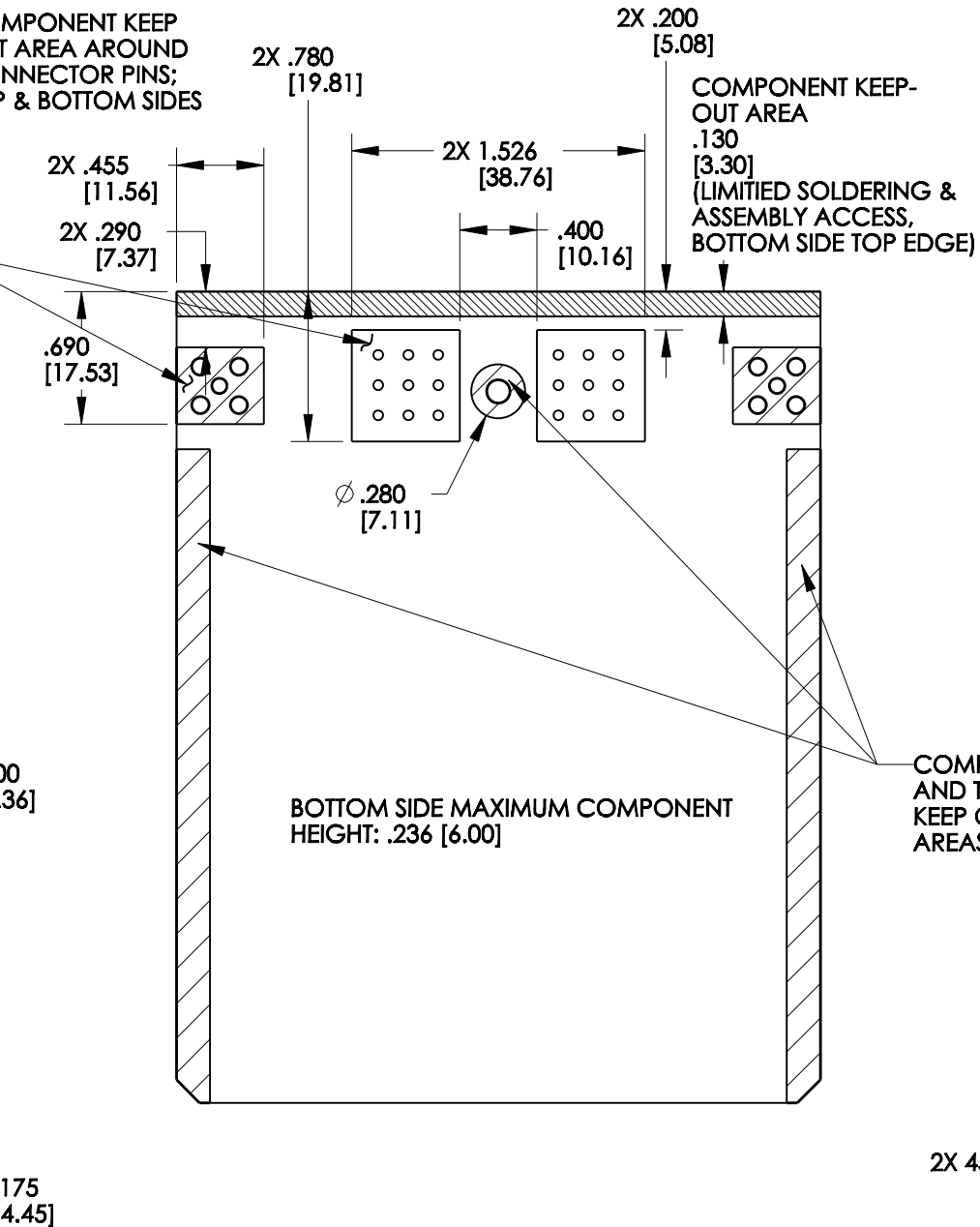
MODELED BY:  
V. RICE

UNITS <b>ENGLISH INCHES</b>		<b>PRO/E</b>	<b>CINCH</b>	1700 FINLEY RD LOMBARD, IL. 60148	
DO NOT SCALE DRAWING	DESIGN ENGINEER V. RICE	DATE 5/16/12	TITLE MODICE ME-RF 18-WAY / SMA HEADER ASSEMBLY		
<b>CONFIDENTIAL</b> THIS DOCUMENT IS THE PROPERTY OF CINCH. NEITHER THIS DOCUMENT NOR ANY OF THE INFORMATION CONTAINED IN IT MAY BE DUPLICATED OR DISCLOSED WITHOUT PRIOR WRITTEN CONSENT OF CINCH. ©COPYRIGHT 2009 CINCH	<b>APPROVALS ON FILE</b>		MATERIAL SEE NOTES	CONTROL SPEC NUMBER	
			MATERIAL SPEC NUMBER	FINISH	PROJECT NUMBER A15085
			CAD FILE NUMBER 5810618001S	DRAWING NUMBER 5810618001S	
			CAGE IDENT NO. 71785	SIZE B	SCALE 1:1

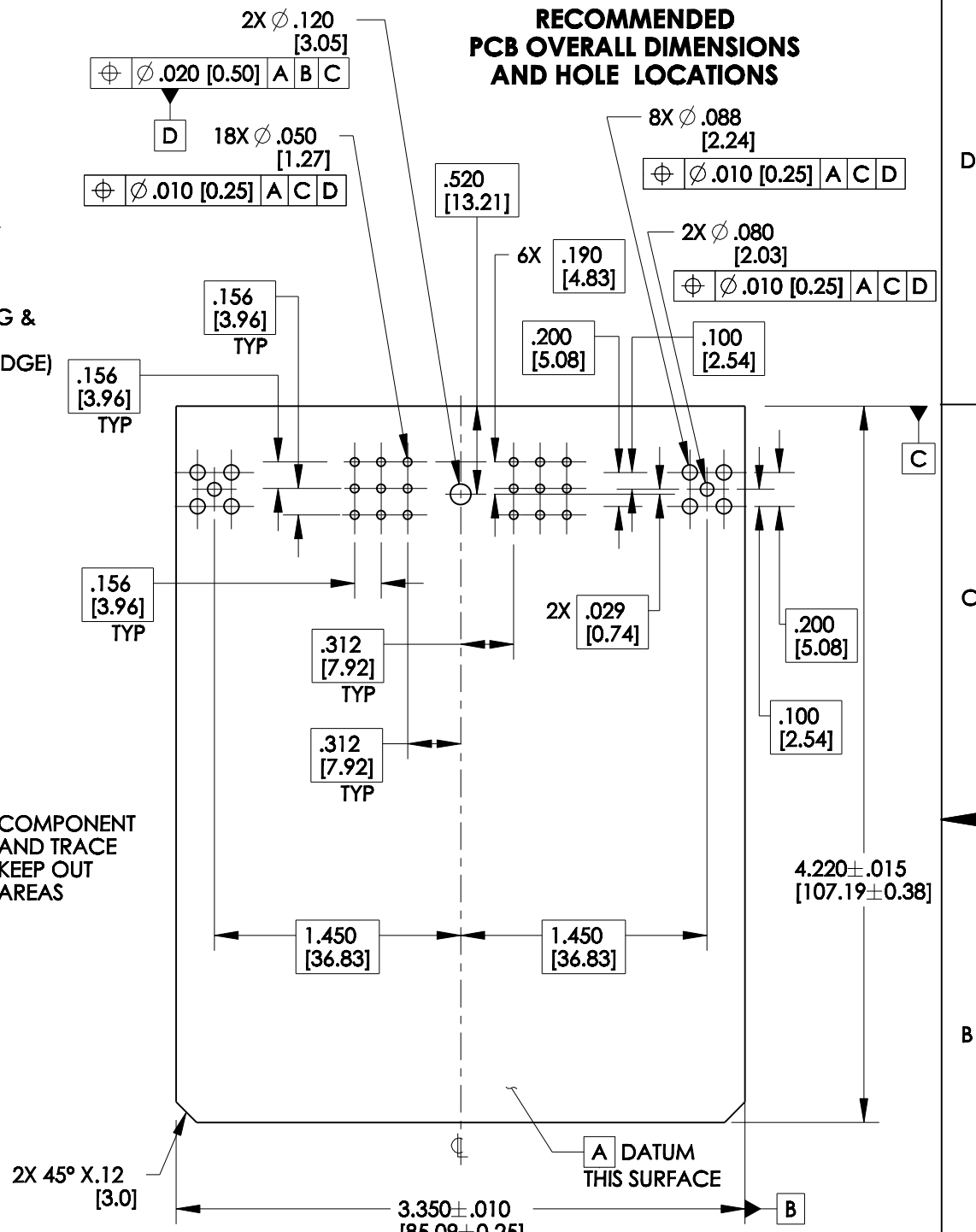
**RECOMMENDED  
TOP SIDE  
PCB GENERAL  
ZONING AND KEEP-OUT AREAS**



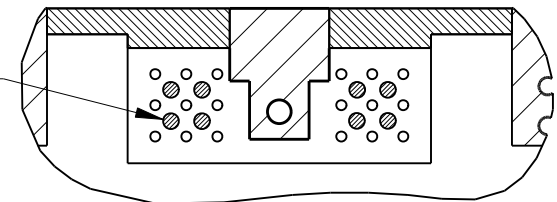
**RECOMMENDED  
BOTTOM SIDE  
PCB GENERAL  
ZONING AND KEEP-OUT AREAS**



**RECOMMENDED  
PCB OVERALL DIMENSIONS  
AND HOLE LOCATIONS**



FERRITE SPACER FEET  
TRACE KEEP OUT  
AREAS (8 PLACES)  
SEE NOTE 5



**PCB TOP SIDE PIN AREA WITH FERRITES DETAIL**

UNITS <b>ENGLISH INCHES</b>	<b>CINCH</b>		1700 FINLEY RD LOMBARD, IL. 60148
DO NOT SCALE DRAWING	TITLE MODICE ME-RF 18-WAY / SMA HEADER ASSEMBLY		
CONFIDENTIAL THIS DOCUMENT IS THE PROPERTY OF CINCH. NEITHER THIS DOCUMENT NOR ANY OF THE INFORMATION CONTAINED IN IT MAY BE DUPLICATED OR DISCLOSED WITHOUT PRIOR WRITTEN CONSENT OF CINCH. ©COPYRIGHT 2009 CINCH	CAD FILE NUMBER 5810618001S	DRAWING NUMBER 5810618001S	REV D
	CAGE IDENT NO. 71785	SIZE B	SCALE 1:1
	SHEET 2 OF 2		