



AUTOMOTIVE LINE

INTERIOR/CONTROL UNITS

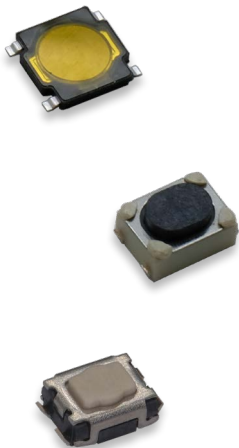


RKA2  
RKB2  
RKC2

## THE PERFECT SERIES FOR KEYFOBS

RKA2, RKB2 and RKC2 are the 3 series available for multiple design options in the keyless entry system business. They have the perfect form factor and actuation force range adapted to this segment.

- **RKA2:** Low profile 0.55mm above PCB with product size 4.5 x 4.5 mm five actuation forces with up to 540gf with 150k life and 100gf, 160gf with 1000k life.
- **RKB2:** 2.5 mm height with size at 4.2 x 3.2 mm, three actuation forces up to 4N with 100k life
- **RKC2:** 1.7 mm height with size at 3.5 x 2.7 mm, four actuation forces up to 200k life



### **RKX SERIES**

THE COMPLETE KEYFOB TOOL KIT

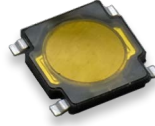
[www.ckswitches.com](http://www.ckswitches.com)



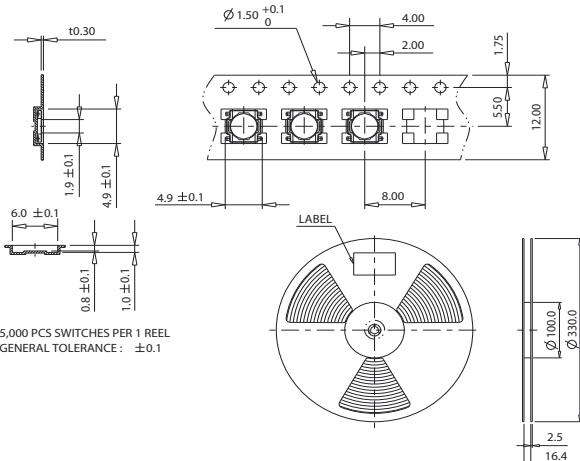
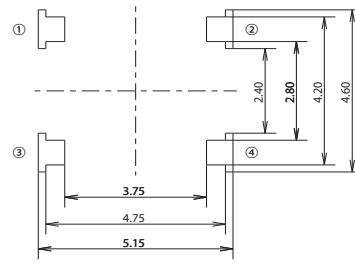
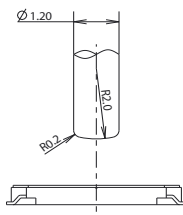
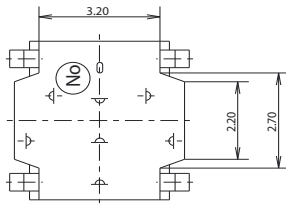
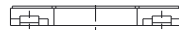
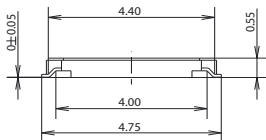
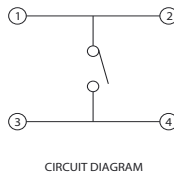
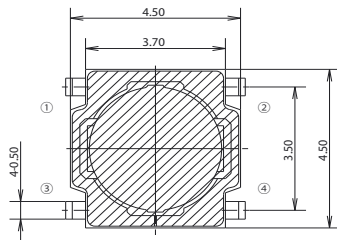
# AUTOMOTIVE LINE

## INTERIOR/CONTROL UNITS

RKA2: RKA2 0.55MM HEIGHT LOW PROFILE SWITCH



Description	Force	Life Cycles	Product Size	Height	Travel	Operating Temperature	Rating
RKA2SGN055SMTR LFS	100gf	1000k	4.5 x 4.5 mm	0.5 mm	0.2+/-0.1 mm	-40°C/+85°C	15VDC-20mA
RKA2SGM055SMTR LFS	160gf	1000k					
RKA2SGK055SMTR LFS	250gf	200k					
RKA2SGG055SMTR LFS	400gf	200k					
RKA2SGS055SMTR LFS	540gf	150k					



1. 5,000 PCS SWITCHES PER 1 REEL  
2. GENERAL TOLERANCE: ±0.1



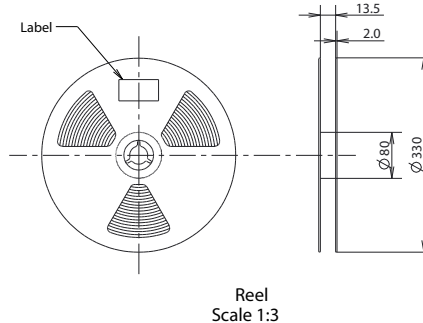
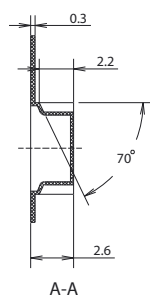
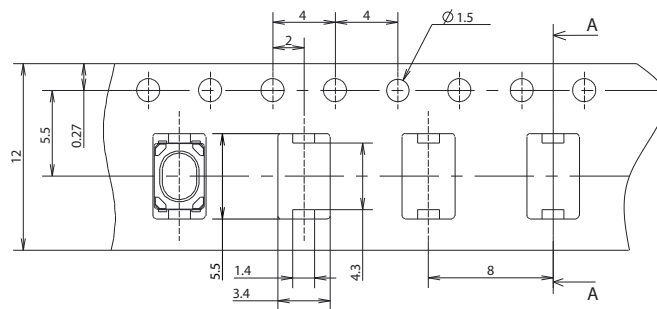
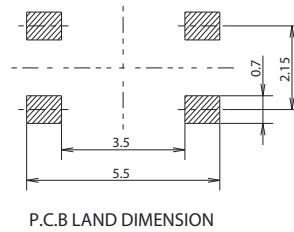
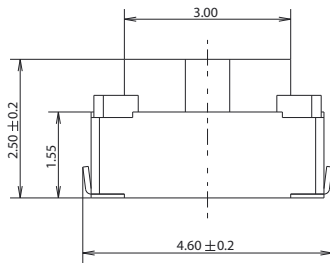
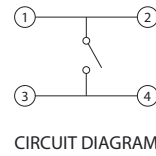
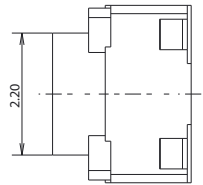
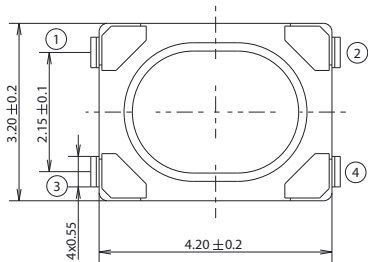
# AUTOMOTIVE LINE

## INTERIOR/CONTROL UNITS

RKB2: 2.5 MM HEIGHT WITH COMPACT PCB LAYOUT



Description	Force	Life Cycles	Product Size	Height	Travel	Operating Temperature	Rating
RKB2SJM250SMTR LFS	180gf	100k	4.2 x 3.2 mm	2.5 mm	0.2 +/- 0.1 mm	-40°C/+85°C	12VDC-50mA
RKB2SJK250SMTR LFS	250gf	100k					
RKB2SJG250SMTR LFS	400gf	100k					





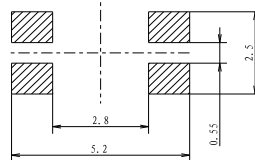
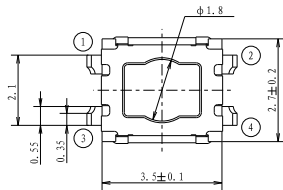
# AUTOMOTIVE LINE

## INTERIOR/CONTROL UNITS

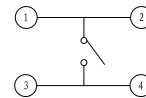
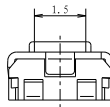
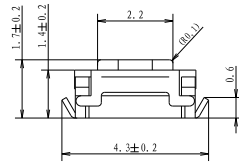
RKC2: 1.7 MM HEIGHT, HIGH ACTUATION FORCE



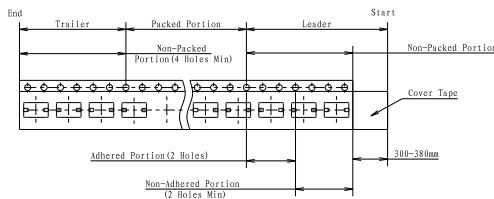
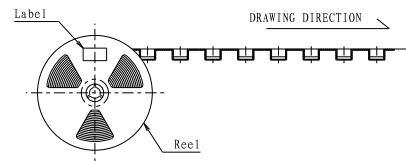
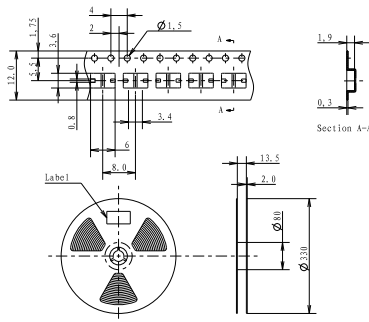
Description	Force	Life Cycles	Product Size	Height	Travel	Operating Temperature	Rating
RKC2SJM170SMTR LFS	180gf	200k	3.5 x 2.7 mm	1.7 mm	0.15+/-0.1 mm	-40°C/+85°C	12VDC-50mA
RKC2SJK170SMTR LFS	250gf	200k					
RKC2SJR170SMTR LFS	350gf	200k					
RKC2SJF170SMTR LFS	500gf	100k					



P. C. B LAND DIMENSION



CIRCUIT DIAGRAM



- NOTE
1. 4K pcs SWITCHES PER 1 REEL
  2. GENERAL TOLERANCE : 0.3mm

AMERICAS

Tel: +1.617.969.3700

ASIA

Tel: +852.3713.5288

EUROPE

Tel: +33.1.60.24.51.30

