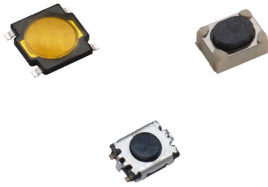


# RK Series Microminiature SMT Top Actuated Tact Switch

**NEW**



## Features/Benefits

- Low profile & microminiature package
- SMT termination
- Hard actuator
- Different actuation forces
- Life cycles up to 500K

## Typical Applications

- Keyfob
- Navigation
- Health & medical devices

## Specifications

FUNCTION: momentary action  
CONTACT ARRANGEMENT: 1 make contact = SPST N.O.  
TERMINALS: SMT termination  
TRAVEL:

|      |               |
|------|---------------|
| RKA2 | 0.20 ± 0.1 mm |
| RKB2 | 0.20 ± 0.1 mm |
| RKC  | 0.15 ± 0.1 mm |

## Mechanical

| Product Description  | Operating Force | Life Cycles |
|----------------------|-----------------|-------------|
| RKB2SJM250SMTR LFS   | 180 gf          | 100,000     |
| RKB2SJK250SMTR LFS   | 250 gf          | 100,000     |
| RKB2SJG250SMTR LFS   | 400 gf          | 100,000     |
| RKA2SGN055SMTR LFS   | 100 gf          | 1,000,000   |
| RKA2SGM055SMTR LFS   | 160 gf          | 1,000,000   |
| RKA2SGK055SMTR LFS   | 250 gf          | 200,000     |
| RKA2SGG055SMTR LFS   | 400 gf          | 200,000     |
| RKA2SGS055SMTR LFS   | 540 gf          | 150,000     |
| RKC GG140 SMTR LFS   | 450 gf          | 200,000     |
| RKC GG140 G SMTR LFS | 450 gf          | 200,000     |

## Electrical

|      | Max. Voltage | Max. Current | Contact Resistance | Insulation Resistance |
|------|--------------|--------------|--------------------|-----------------------|
| RKA2 | DC 15V       | 20 mA max.   | 500mΩ max.         | 50MΩ min.             |
| RKB2 | DC 12V       | 50 mA max.   | 200mΩ max.         | 100MΩ min.            |
| RKC  | DC 12V       | 50 mA max.   | 2Ω max.            | 100MΩ min.            |

DIELECTRIC STRENGTH: 250 VA C (1 minute)  
BOUNCE TIME: ≤ 10 ms

## Environmental

OPERATING TEMPERATURE:

|      |               |
|------|---------------|
| RKA2 | -40°C to 85°C |
| RKB2 | -40°C to 90°C |
| RKC  | -40°C to 85°C |

## Process

SOLDERING: This component is suited to the following methods:  
Infrared Reflow Soldering in accordance with IEC61760-1

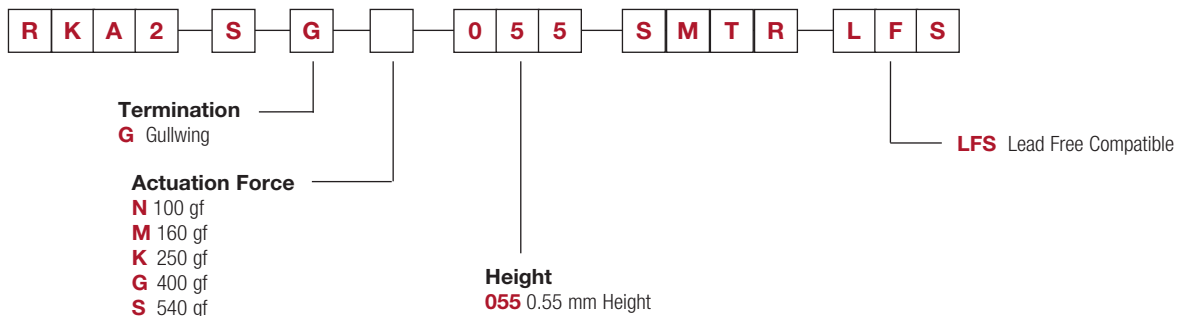
## Packaging

|      |                       |
|------|-----------------------|
| RKA2 | 5,000 pieces per reel |
| RKB2 | 3,000 pieces per reel |
| RKC  | 9,500 pieces per reel |

## How To Order

Our easy build-a-switch concept allows you to mix and match options to create the switch you need. To order, select desired option from each category and place it in the appropriate box.

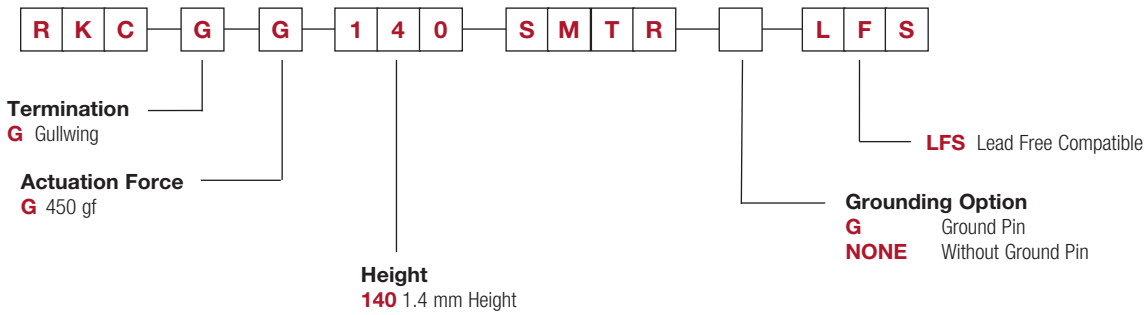
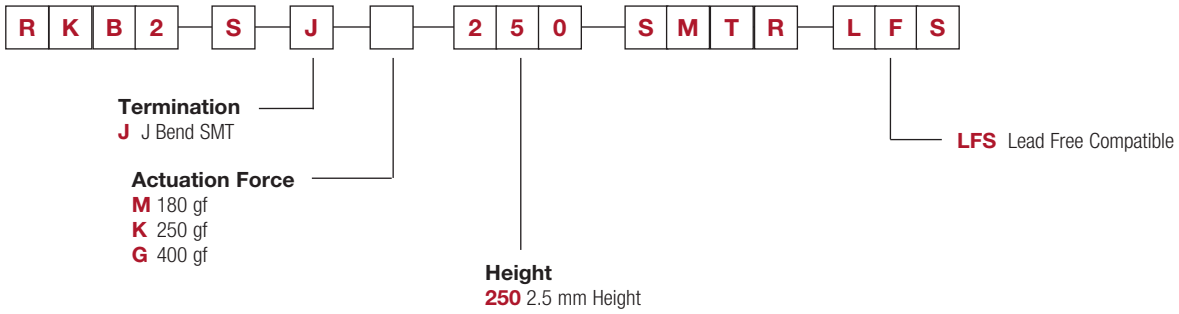
For any part number different from those listed below, please consult your local representative.



**NEW**

# RK Series Microminiature SMT Top Actuated Tact Switch

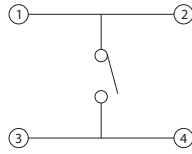
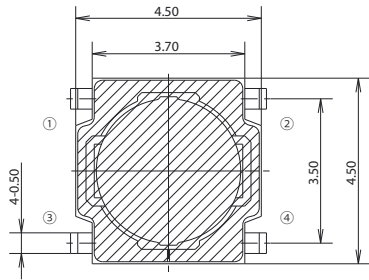
Tactile Switches  
**B**



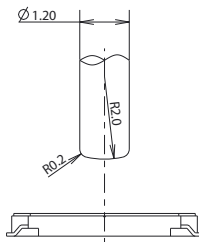
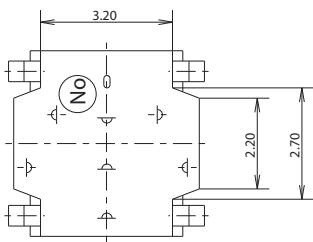
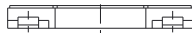
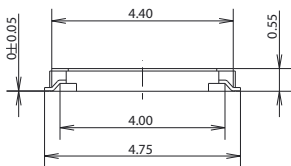
# RK Series Microminiature SMT Top Actuated Tact Switch

**NEW**

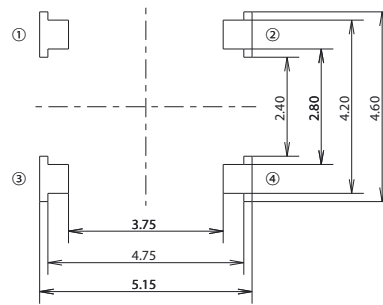
**RKA2** 4.5 X 4.5 X 0.55 MM



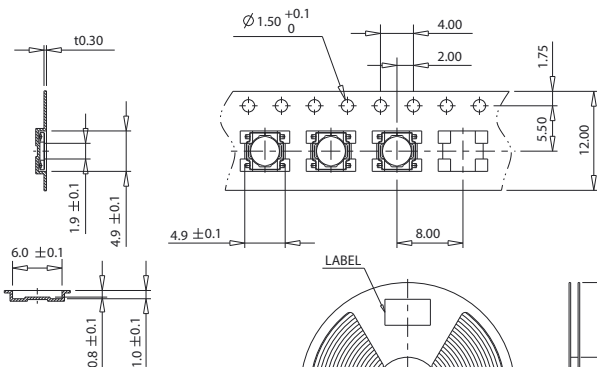
CIRCUIT DIAGRAM



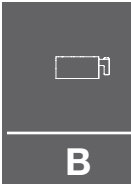
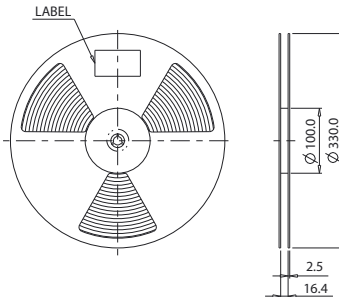
SET MAKER KNOB SIZE



P.C.B MOUNTING SOLDER LAND DIMENSION



- 1. 5,000 PCS SWITCHES PER 1 REEL
- 2. GENERAL TOLERANCE : ±0.1



**B**

Tactile Switches