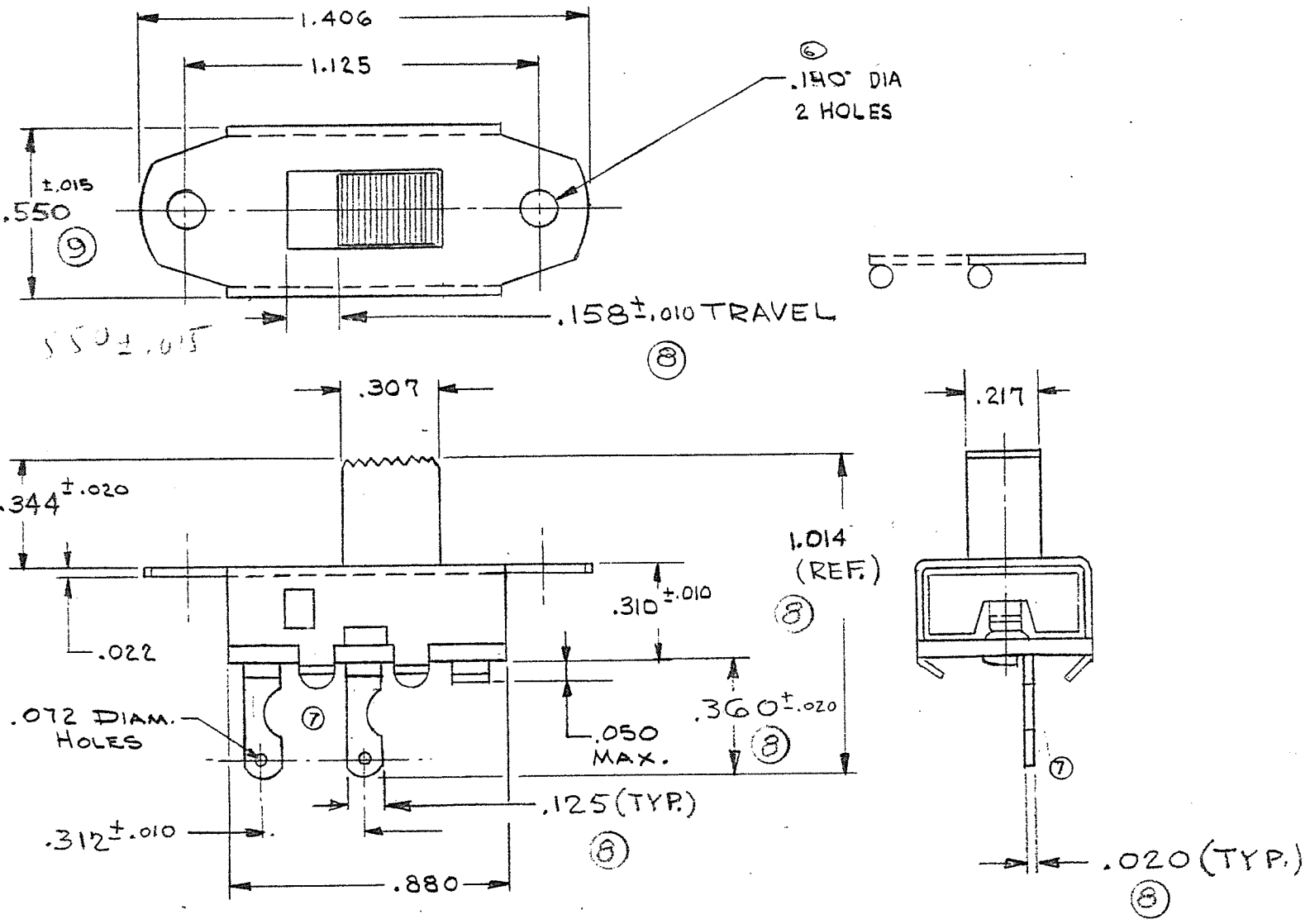


A G-331-0000



.550 WAS .544  
J.V. 9-13-73

9

MASTER

ALL SCREW THREADS TO BE CLASS 2 FIT (AMERICAN STANDARDS) UNLESS OTHERWISE SPECIFIED. DIMENSIONS ARE IN INCHES, AND INCLUDE THICKNESS OF PLATING. DO NOT SCALE DRAWING.

REVISIONS	ENG. AP.	DESCRIPTION
2		REDRAWN
		.544 WAS .553
		.465 WAS .469
		.310 WAS .312
		.650 WAS .680
		.970 WAS 1.000
		.280 WAS .245
		V.J.B. 9-3-65
3		ADDED TOL. TO .544, .072 DIAM. HOLES
		.344 WAS .320, .670 WAS .650, 1.014 WAS .970 & .240 WAS .280
		RH 3-16-66
4		ENTER'S WERE STAGGERED AT 240 TO 250
5		WAS 285° & 4
		11-21-66
6		.140 WAS .136
		12-4-67 J.K.
7		STRAIGHT TERM. ADDED 1/2 MOON TERM. P.S. 4-22-70 FJU
8		1.014 (REF.) WAS 1.000 ± .020
		ADDED .020, .125
		.158 TRAVEL
		J.V. 8-31-73

VARIATIONS ON FINISHED DIMENSIONS UNLESS OTHERWISE MARKED		
BASIC DIMENSIONS	FRACTIONAL DIMENSIONS	DECIMAL DIMENSIONS
UP TO 6	± 1/64	± .005
ABOVE 6 TO 24	± 1/32	± .010
ABOVE 24	± 1/16	± .015
ANGULAR DIMENSIONS		± 1/2°

SWITCH *Master*  
 SPRING RETURN  
 S.P.S.T.  
 FIRST MADE FOR  
 DRAWN BY V.J.B. 9-3-65  
 CHECKED BY J.M.V.

Continental-Wirt Electronics Corp. G-331-0000