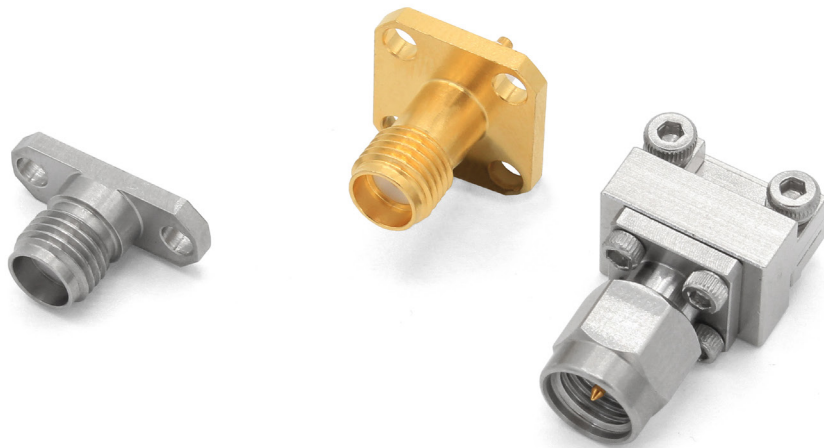


Our SMA connector range are semi-precision and offer a 50 ohms impedance and a 0.25 - 36 threaded coupling. Offering high performance all within a compact SMA (Sub Miniature version A) connector design, frequently used as standard for antennas, devices and various medical applications.

These domestic connectors are also known as F type coaxial connectors and have a 50ohms impedance. Moreover, these sub-miniature sizes are also used in relatively small items of electronic equipment. Typically, 500 mating cycles, but care is needed to keep the mating surfaces clean.



Key Features:

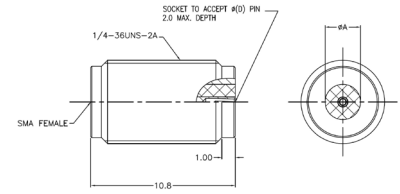
- 50-ohm Impedance
- Insulation resistance >5000MΩ
- Durability >500 Cycles
- Available in Male and Female Threads
- Available in Plug or Jack
- Beryllium Copper Contact Pin
- Body Material available in Stainless Steel Passivation and Brass

SMA Series Bulkhead



RFSMAAJA

- ⊕ Max Voltage 335V
- ⊕ Operating Temperature -65C to +165C
- ⊕ Frequency Range 0-26.5GHz
- ⊕ VSWR <1.30
- ⊕ Dielectric withstanding Voltage >750V



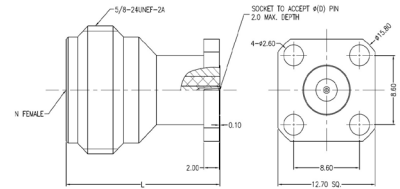
Part Number	Plug or Jack	Socket Diameter
RFSMAAJA	Jack	0.23mm
RFSMAAJB	Jack	0.30mm
RFSMAAJC	Jack	0.38mm
RFSMAAJD	Jack	0.46mm
RFSMAAJE	Jack	0.51mm
RFSMAAJA	Jack	0.23mm

SMA Series Edge Launch Connector



RFSMACJAAA

- ⊕ Max Voltage 335V
- ⊕ Operating Temperature -55C to +155C
- ⊕ Frequency Range 0-26.5GHz
- ⊕ VSWR <1.30
- ⊕ Dielectric withstanding Voltage >750V
- ⊕ Only available in Brass with 10u" Gold Plating



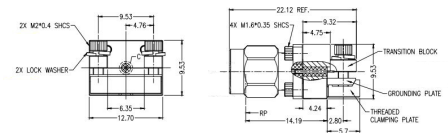
Part Number	Plug or Jack	Pin Diameter	Pin Length	PCB Thickness
RFSMACJAAA	Jack	0.30mm	0.60mm	0.61mm
RFSMACJAAB	Jack	0.30mm	0.60mm	0.87mm
RFSMACJAAC	Jack	0.30mm	0.60mm	1.78mm
RFSMACJABA	Jack	0.30mm	1.22mm	0.61mm
RFSMACJABB	Jack	0.30mm	1.22mm	0.87mm
RFSMACJABC	Jack	0.30mm	1.22mm	1.78mm

SMA Series End Launch Connector



RFSMAEP

- ⊕ Max Voltage 335V
- ⊕ Operating Temperature -55C to +155C
- ⊕ Frequency Range 0-26.5GHz
- ⊕ VSWR <1.40
- ⊕ Dielectric withstanding Voltage >750V



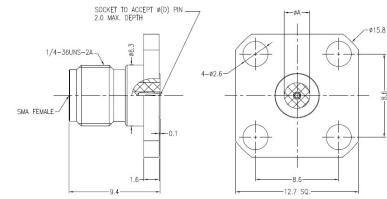
Part Number	Plug or Jack
RFSMAEJ	Jack
RFSMAEP	Plug

SMA Series Socket 4 Hole Flange



RFSMAA4JCCA

- ⊕ Max Voltage 335V
- ⊕ Operating Temperature -65C to +165C
- ⊕ Frequency Range 0-26.5GHz
- ⊕ VSWR <1.30
- ⊕ Dielectric withstanding Voltage >750V



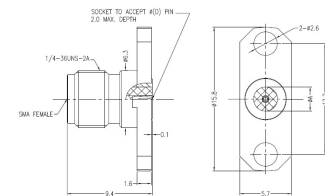
Part Number	Plug or Jack	Flange Mount Length	Mount Hole Distance	Socket Diameter
RFSMAA4JCCA	Jack	12.70mm	8.60mm	0.23mm
RFSMAA4JCCB	Jack	12.70mm	8.60mm	0.30mm
RFSMAA4JCCC	Jack	12.70mm	8.60mm	0.38mm
RFSMAA4JCCD	Jack	12.70mm	8.60mm	0.46mm
RFSMAA4JCCE	Jack	12.70mm	8.60mm	0.51mm
RFSMAA4JAAA	Jack	9.50mm	6.35mm	0.23mm
RFSMAA4JAAB	Jack	9.50mm	6.35mm	0.30mm
RFSMAA4JAAC	Jack	9.50mm	6.35mm	0.38mm
RFSMAA4JAAD	Jack	9.50mm	6.35mm	0.46mm
RFSMAA4JAAE	Jack	9.50mm	6.35mm	0.51mm
RFSMAA4PCCA	Plug	12.70mm	8.60mm	0.23mm
RFSMAA4PCCB	Plug	12.70mm	8.60mm	0.30mm
RFSMAA4PCCC	Plug	12.70mm	8.60mm	0.38mm
RFSMAA4PCCD	Plug	12.70mm	8.60mm	0.46mm
RFSMAA4PCCE	Plug	12.70mm	8.60mm	0.51mm
RFSMAA4PAAA	Plug	9.50mm	6.35mm	0.23mm
RFSMAA4PAAB	Plug	9.50mm	6.35mm	0.30mm
RFSMAA4PAAC	Plug	9.50mm	6.35mm	0.38mm
RFSMAA4PAAD	Plug	9.50mm	6.35mm	0.46mm
RFSMAA4PAAE	Plug	9.50mm	6.35mm	0.51mm

SMA Series Socket 2 Hole Flange:



RFSMAA2JEGA

- ⊕ Max Voltage 335V
- ⊕ Operating Temperature -65C to +165C
- ⊕ Frequency Range 0-26.5GHz
- ⊕ VSWR <1.30
- ⊕ Dielectric withstanding Voltage >750V



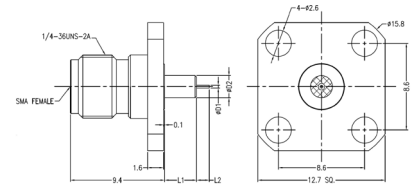
Part Number	Plug or Jack	Flange Mount Length	Mount Hole Distance	Socket Diameter
RFSMAA2JEGA	Jack	15.80mm	12.20mm	0.23mm
RFSMAA2JEGB	Jack	15.80mm	12.20mm	0.30mm
RFSMAA2JEGC	Jack	15.80mm	12.20mm	0.38mm
RFSMAA2JEGD	Jack	15.80mm	12.20mm	0.46mm
RFSMAA2JEGE	Jack	15.80mm	12.20mm	0.51mm
RFSMAA2JCCA	Jack	12.70mm	8.60mm	0.23mm
RFSMAA2JCCB	Jack	12.70mm	8.60mm	0.30mm
RFSMAA2JCCC	Jack	12.70mm	8.60mm	0.38mm
RFSMAA2JCCD	Jack	12.70mm	8.60mm	0.46mm
RFSMAA2JCCE	Jack	12.70mm	8.60mm	0.51mm
RFSMAA2PEGA	Plug	15.80mm	12.20mm	0.23mm
RFSMAA2PEGB	Plug	15.80mm	12.20mm	0.30mm
RFSMAA2PEGC	Plug	15.80mm	12.20mm	0.38mm
RFSMAA2PEGD	Plug	15.80mm	12.20mm	0.46mm
RFSMAA2PEGE	Plug	15.80mm	12.20mm	0.51mm
RFSMAA2PCEA	Plug	12.70mm	8.90mm	0.23mm
RFSMAA2PCEB	Plug	12.70mm	8.90mm	0.30mm
RFSMAA2PCEC	Plug	12.70mm	8.90mm	0.38mm
RFSMAA2PCED	Plug	12.70mm	8.90mm	0.46mm
RFSMAA2PCEE	Plug	12.70mm	8.90mm	0.51mm

SMA Series Pin with Extended PTFE 4 Hole Flange



RFSMAA4JCCACDD

- ⊕ Max Voltage 335V
- ⊕ Operating Temperature -65C to +165C
- ⊕ Frequency Range 0-26.5GHz
- ⊕ VSWR <1.30
- ⊕ Dielectric withstanding Voltage >750V
- ⊕ Flange Mount Length 12.70mm
- ⊕ Mount Hole Distance 8.60mm



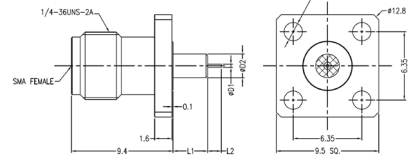
Part Number	Plug or Jack	Pin Diameter	Pin Length	Extended PTFE Diameter	Extended PTFE Length
RFSMAA4JCCACDD	Jack	0.30mm	1.27mm	2.20mm	3.20mm
RFSMAA4JCCDGC1	Jack	0.64mm	3.00mm	2.10mm	15.00mm
RFSMAA4JCCDGF1	Jack	0.64mm	3.00mm	3.90mm	15.00mm
RFSMAA4JCCIDHB	Jack	1.00mm	1.50mm	4.10mm	3.00mm
RFSMAA4JCCIGHE	Jack	1.00mm	3.00mm	4.10mm	4.00mm
RFSMAA4JCCBFGB	Jack	0.38mm	2.00mm	4.00mm	3.00mm
RFSMAA4JCCBFGC	Jack	0.38mm	2.00mm	4.00mm	4.00mm
RFSMAA4PCCIDHE	Plug	1.00mm	1.50mm	4.10mm	4.00mm
RFSMAA4PCCBFGB	Plug	0.38mm	2.00mm	4.00mm	3.00mm

SMA Series Pin with Extended PTFE 4 Hole Flange



RFSMAA4JAAACDD

- ⊕ Max Voltage 335V
- ⊕ Operating Temperature -65C to +165C
- ⊕ Frequency Range 0-26.5GHz
- ⊕ VSWR <1.30
- ⊕ Dielectric withstanding Voltage >750V
- ⊕ Flange Mount Length 9.50mm
- ⊕ Mount Hole Distance 6.35mm



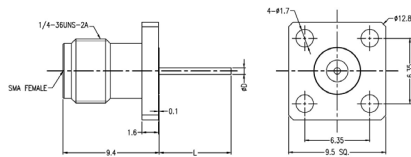
Part Number	Plug or Jack	Pin Diameter	Pin Length	Extended PTFE Diameter	Extended PTFE Length
RFSMAA4JAAACDD	Jack	0.30mm	1.27mm	2.20mm	3.20mm
RFSMAA4JAADGC1	Jack	0.64mm	3.00mm	2.10mm	15.00mm
RFSMAA4JAABFGB	Jack	0.38mm	2.00mm	4.00mm	3.00mm
RFSMAA4JAABFGC	Jack	0.38mm	2.00mm	4.00mm	4.00mm
RFSMAA4JAABFGD	Jack	0.80mm	2.00mm	4.00mm	4.00mm
RFSMAA4PAABFGB	Plug	0.38mm	2.00mm	4.00mm	3.00mm

SMA Series Pin without Extended PTFE 4 Hole Flange



RFSMAA4JAAHR

- ⊕ Max Voltage 335V
- ⊕ Operating Temperature -65C to +165C
- ⊕ Frequency Range 0-26.5GHz
- ⊕ VSWR <1.30
- ⊕ Dielectric withstanding Voltage >750V



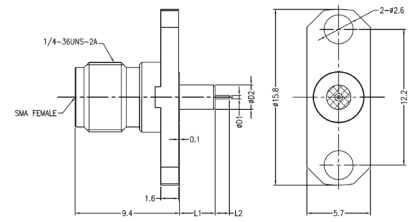
Part Number	Plug or Jack	Flange Mount Length	Mount Hole Distance	Pin Diameter	Pin Length
RFSMAA4JCCDQ	Jack	12.70mm	8.60mm	0.64mm	18.00mm
RFSMAA4JCCHP	Jack	12.70mm	8.60mm	0.87mm	10.92mm
RFSMAA4JCCHR	Jack	12.70mm	8.60mm	0.87mm	26.00mm
RFSMAA4JAADQ	Jack	9.50mm	6.35mm	0.64mm	18.00mm
RFSMAA4JAAHP	Jack	9.50mm	6.35mm	0.87mm	10.92mm
RFSMAA4JAAHR	Jack	9.50mm	6.35mm	0.87mm	26.00mm

SMA Series Pin with Extended PTFE 2 Hole Flange



RFSMAA2JEGACDD

- Max Voltage 335V
- Operating Temperature -65C to +165C
- Frequency Range 0-26.5GHz
- VSWR <1.30
- Dielectric withstanding Voltage >750V
- Flange Mount Length 15.80mm
- Mount Hole Distance 12.20mm



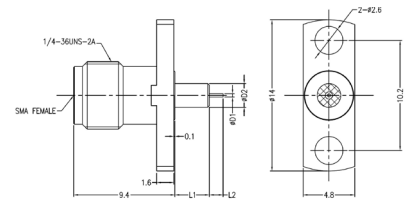
Part Number	Plug or Jack	Pin Diameter	Pin Length	Extended PTFE Diameter	Extended PTFE Length
RFSMAA2JEGACDD	Jack	0.30mm	1.27mm	2.20mm	3.20mm
RFSMAA2JEGDGCI	Jack	0.64mm	3.00mm	2.10mm	15.00mm
RFSMAA2JEGDGF1	Jack	0.64mm	3.00mm	3.90mm	15.00mm
RFSMAA2JEGIDHB	Jack	1.00mm	1.50mm	4.10mm	3.00mm
RFSMAA2JEGIGHE	Jack	1.00mm	3.00mm	4.10mm	4.00mm
RFSMAA2JEGBFGB	Jack	0.38mm	2.00mm	4.00mm	3.00mm
RFSMAA2JEGFFGE	Jack	0.80mm	2.00mm	4.00mm	4.00mm
RFSMAA2PEGIDHE	Plug	1.00mm	1.50mm	4.10mm	4.00mm
RFSMAA2PEGBFGB	Plug	0.38mm	2.00mm	4.00mm	3.00mm

SMA Series Pin with Extended PTFE 2 Hole Flange



RFSMAA2JDFACDD

- Max Voltage 335V
- Operating Temperature -65C to +165C
- Frequency Range 0-26.5GHz
- VSWR <1.30
- Dielectric withstanding Voltage >750V
- Flange Mount Length 14.00mm
- Mount Hole Distance 10.20mm



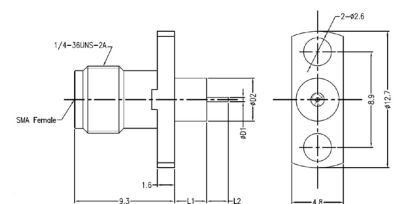
Part Number	Plug or Jack	Pin Diameter	Pin Length	Extended PTFE Diameter	Extended PTFE Length
RFSMAA2JDFACDD	Jack	0.30mm	1.27mm	2.20mm	3.20mm
RFSMAA2JDFDGCI	Jack	0.64mm	3.00mm	2.10mm	15.00mm
RFSMAA2JDFBFGB	Jack	0.38mm	2.00mm	4.00mm	3.00mm
RFSMAA2JDFFFGE	Jack	0.80mm	2.00mm	4.00mm	4.00mm
RFSMAA2PDFBFGB	Plug	0.38mm	2.00mm	4.00mm	3.00mm

SMA Series Pin with Extended PTFE 2 Hole Flange



RFSMAA2JEGBFGB

- Max Voltage 335V
- Operating Temperature -65C to +165C
- Frequency Range 0-26.5GHz
- VSWR <1.30
- Dielectric withstanding Voltage >750V
- Flange Mount Length 12.70mm
- Mount Hole Distance 8.90mm



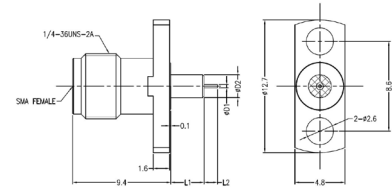
Part Number	Plug or Jack	Pin Diameter	Pin Length	Extended PTFE Diameter	Extended PTFE Length
RFSMAA2JCEBFGB	Jack	0.38mm	2.00mm	4.00mm	3.00mm
RFSMAA2JCEFFGE	Jack	0.80mm	2.00mm	4.00mm	4.00mm
RFSMAA2PCEBFGB	Plug	0.38mm	2.00mm	4.00mm	3.00mm

SMA Series Pin with Extended PTFE 2 Hole Flange



RFSMAA2JCCACDD

- ⊕ Max Voltage 335V
- ⊕ Operating Temperature -65C to +165C
- ⊕ Frequency Range 0-26.5GHz
- ⊕ VSWR <1.30
- ⊕ Dielectric withstanding Voltage >750V
- ⊕ Flange Mount Length 12.70mm
- ⊕ Mount Hole Distance 8.60mm



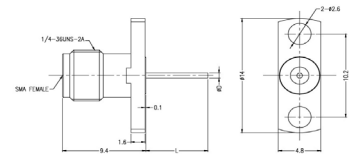
Part Number	Plug or Jack	Pin Diameter	Pin Length	Extended PTFE Diameter	Extended PTFE Length
RFSMAA2JCCACDD	Jack	0.30mm	1.27mm	2.20mm	3.20mm
RFSMAA2JCCDGC1	Jack	0.64mm	3.00mm	2.10mm	15.00mm
RFSMAA2JCCDGF1	Jack	0.64mm	3.00mm	3.90mm	15.00mm
RFSMAA2JCCBFGB	Jack	0.38mm	2.00mm	4.00mm	3.00mm
RFSMAA2JCCFFGE	Jack	0.80mm	2.00mm	4.00mm	4.00mm

Pin Version without Extended PTFE 2 Hole Flange



RFSMAA2JDFHP

- ⊕ Max Voltage 335V
- ⊕ Operating Temperature -65C to +165C
- ⊕ Frequency Range 0-26.5GHz
- ⊕ VSWR <1.30
- ⊕ Dielectric withstanding Voltage >750V



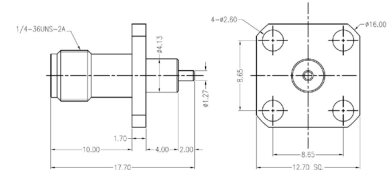
Part Number	Plug or Jack	Flange Mount Length	Mount Hole Distance	Pin Diameter	Pin Length
RFSMAA2JEGDQ	Jack	15.80mm	12.20mm	0.64mm	18.00mm
RFSMAA2JEGHP	Jack	15.80mm	12.20mm	0.87mm	10.92mm
RFSMAA2JEGHR	Jack	15.80mm	12.20mm	0.87mm	26.00mm
RFSMAA2JCCDQ	Jack	12.70mm	8.60mm	0.64mm	18.00mm
RFSMAA2JCCHP	Jack	12.70mm	8.60mm	0.87mm	10.92mm
RFSMAA2JCCHR	Jack	12.70mm	8.60mm	0.87mm	26.00mm
RFSMAA2JDFDQ	Jack	14.00mm	10.20mm	0.64mm	18.00mm
RFSMAA2JDFHP	Jack	14.00mm	10.20mm	0.87mm	10.92mm

SMA Series Flange Mount (RoundPost)



RFSMAA4JCDLF

- ⊕ Max Voltage 350V
- ⊕ Operating Temperature -65C to +165C
- ⊕ Frequency Range 0-18GHz
- ⊕ VSWR <1.50 at 12-18GHz
- ⊕ Dielectric withstanding Voltage >750V
- ⊕ Only available in Brass with 3u" Gold plating



Part Number	Plug or Jack	Flange Mount Length	Mount Hole Distance	Pin Diameter	Pin Length
RFSMAA4JCDLF	Jack	12.70mm	8.65mm	1.27mm	2.00mm

---

**Electrical:**

Insulation Resistance:	>5000M $\Omega$ m
Impedance:	50 $\Omega$ m
Centre Contact Resistance:	<3.0m $\Omega$ ms
Outer Contact Resistance:	<2.0m $\Omega$ ms

---

**Mechanical:**

Centre Contact Retention:	>20N
Coupling Torque:	0.80Nm to 1.10Nm
Coupling Torque RPC N:	1.36Nm
Cycles:	>500

---

**Material**

Body:	Passivation of Stainless Steel, Brass with Gold plating
Contact:	Beryllium Copper
Insulator:	Adapter ASTM D 1710 ULTEM 1000
RoHS:	Compliant