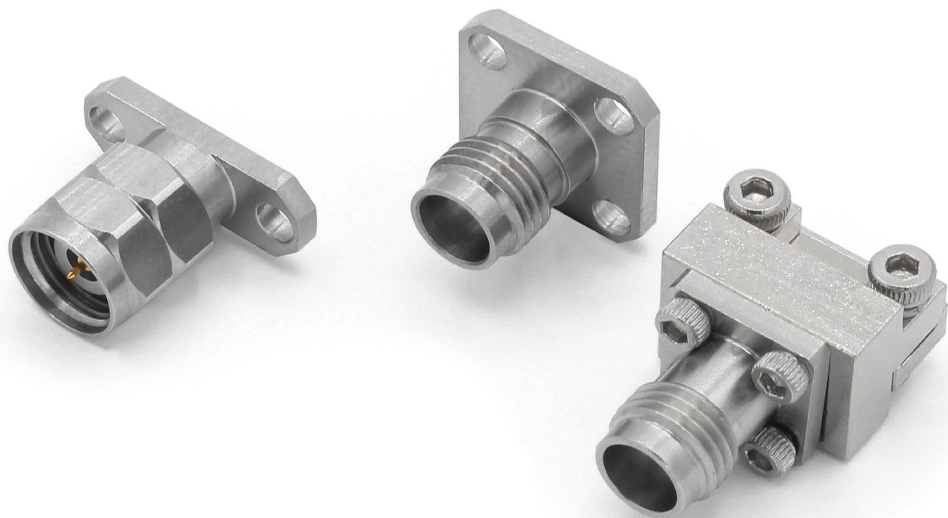


The 2.40mm series from the RF connector range form part of the wide ranging Radio Frequency interconnect mechanisms, with the 2.40mm connectors being more robust than the traditional SMA.

These connectors are accessible in standard polarity designs with bulkhead and mount-less categories. Available in both male and female versions, covering the frequency range up to 50GHz.



Key Features:

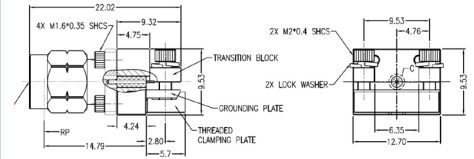
- 50-ohm Impedance
- Insulation resistance >5000MΩ
- Durability >500 Cycles
- Low Insertion Loss
- Available in Plug or Jack
- Beryllium Copper Contact Pin
- Screw-on Coupling Mechanism
- Body Material available in Stainless Steel Passivation

2.40mm Series End Launch Connector



RF240EJ

- ⊕ Max Voltage 150V
- ⊕ Operating Temperature -55C to +125C
- ⊕ Frequency Range 0-50GHz
- ⊕ VSWR <1.30
- ⊕ Dielectric withstanding Voltage >500V
- ⊕ Available with Extended PTFE



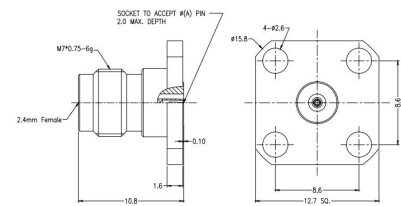
| Part Number | Plug or Jack |
|-------------|--------------|
| RF240EJ     | Jack         |
| RF240EP     | Plug         |

2.40mm Series Socket 4 Hole Flange



RF240A4JCCA

- ⊕ Max Voltage 150V
- ⊕ Operating Temperature -40C to +85C
- ⊕ Frequency Range 0-50GHz
- ⊕ VSWR <1.30
- ⊕ Dielectric withstanding Voltage >500V
- ⊕ Available with Extended PTFE



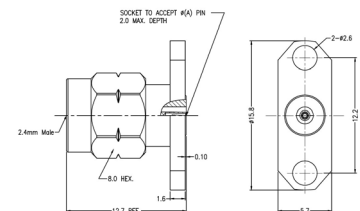
| Part Number | Plug or Jack | Flange Mount Length | Mount Hole Distance | Socket Diameter |
|-------------|--------------|---------------------|---------------------|-----------------|
| RF240A4JCCA | Jack         | 12.70mm             | 8.60mm              | 0.23mm          |
| RF240A4JCCB | Jack         | 12.70mm             | 8.60mm              | 0.30mm          |
| RF240A4JCCE | Jack         | 12.70mm             | 8.60mm              | 0.51mm          |
| RF240A4PCCA | Plug         | 12.70mm             | 8.60mm              | 0.23mm          |
| RF240A4PCCB | Plug         | 12.70mm             | 8.60mm              | 0.30mm          |
| RF240A4PCCE | Plug         | 12.70mm             | 8.60mm              | 0.51mm          |

2.40mm Series Socket 2 Hole Flange



RF240A2PEGA

- ⊕ Max Voltage 150V
- ⊕ Operating Temperature -40C to +85C
- ⊕ Frequency Range 0-50GHz
- ⊕ VSWR <1.30
- ⊕ Dielectric withstanding Voltage >500V
- ⊕ Available with Extended PTFE



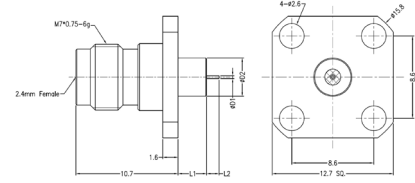
| Part Number | Plug or Jack | Flange Mount Length | Mount Hole Distance | Socket Diameter |
|-------------|--------------|---------------------|---------------------|-----------------|
| RF240A2JEGA | Jack         | 15.80mm             | 12.20mm             | 0.23mm          |
| RF240A2JEGB | Jack         | 15.80mm             | 12.20mm             | 0.30mm          |
| RF240A2JEGE | Jack         | 15.80mm             | 12.20mm             | 0.51mm          |
| RF240A2PEGA | Plug         | 15.80mm             | 12.20mm             | 0.23mm          |
| RF240A2PEGB | Plug         | 15.80mm             | 12.20mm             | 0.30mm          |
| RF240A2PEGE | Plug         | 15.80mm             | 12.20mm             | 0.51mm          |

2.40mm Series Pin with Extended PTFE 4 Hole Flange



RF240A4JCCADGA

- ⊕ Max Voltage 150V
- ⊕ Operating Temperature -40C to +85C
- ⊕ Frequency Range 0-50GHz
- ⊕ VSWR <1.30
- ⊕ Dielectric withstanding Voltage >500V
- ⊕ Available with Extended PTFE
- ⊕ Flange Mount Length 12.70mm
- ⊕ Mount Hole Distance 8.60mm



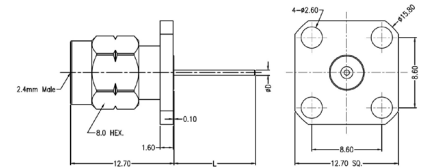
| Part Number    | Plug or Jack | Pin Diameter | Pin Length | Extended PTFE Dia | Extended PTFE Length |
|----------------|--------------|--------------|------------|-------------------|----------------------|
| RF240A4JCCADGA | Jack         | 0.30mm       | 1.50mm     | 4.00mm            | 1.40mm               |
| RF240A4JCCADGB | Jack         | 0.30mm       | 1.50mm     | 4.00mm            | 3.00mm               |
| RF240A4JCCADAA | Jack         | 0.30mm       | 1.50mm     | 1.67mm            | 1.40mm               |
| RF240A4JCCADAB | Jack         | 0.30mm       | 1.50mm     | 1.67mm            | 3.00mm               |
| RF240A4JCCCBG  | Jack         | 0.60mm       | 1.27mm     | 2.00mm            | 6.35mm               |
| RF240A4JCCCEBF | Jack         | 0.60mm       | 1.90mm     | 2.00mm            | 5.10mm               |

2.40mm Series Pin without Extended PTFE 4 Hole Flange



RF240A4PCCGM

- ⊕ Max Voltage 150V
- ⊕ Operating Temperature -40C to +85C
- ⊕ Frequency Range 0-50GHz
- ⊕ VSWR <1.30
- ⊕ Dielectric withstanding Voltage >500V
- ⊕ Available with Extended PTFE



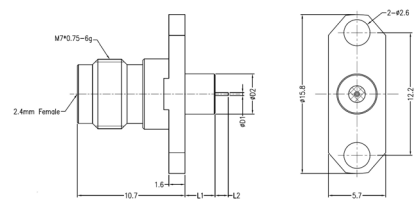
| Part Number   | Plug or Jack | Flange Mount Length | Mount Hole Distance | Pin Diameter | Pin Length |
|---------------|--------------|---------------------|---------------------|--------------|------------|
| RF240A4JCCCKG | Jack         | 12.70mm             | 8.60mm              | 1.20mm       | 3.00mm     |
| RF240A4JCCJJ  | Jack         | 12.70mm             | 8.60mm              | 1.04mm       | 6.34mm     |
| RF240A4JCCII  | Jack         | 12.70mm             | 8.60mm              | 1.00mm       | 5.50mm     |
| RF240A4JCCGM  | Jack         | 12.70mm             | 8.60mm              | 0.86mm       | 8.75mm     |
| RF240A4JCCEN  | Jack         | 12.70mm             | 8.60mm              | 0.75mm       | 9.00mm     |
| RF240A4JCCDK  | Jack         | 12.70mm             | 8.60mm              | 0.64mm       | 6.84mm     |
| RF240A4JCCDO  | Jack         | 12.70mm             | 8.60mm              | 0.64mm       | 10.00mm    |
| RF240A4PCCGM  | Plug         | 12.70mm             | 8.60mm              | 0.86mm       | 8.75mm     |
| RF240A4PCCDO  | Plug         | 12.70mm             | 8.60mm              | 0.64mm       | 10.00mm    |

2.40mm Series Pin with Extended PTFE 2 Hole Flange



RF240A2JEGADAA

- ⊕ Max Voltage 150V
- ⊕ Operating Temperature -40C to +85C
- ⊕ Frequency Range 0-50GHz
- ⊕ VSWR <1.30
- ⊕ Dielectric withstanding Voltage >500V
- ⊕ Available with Extended PTFE
- ⊕ Flange Mount Length 15.80mm
- ⊕ Mount Hole Distance 12.20mm



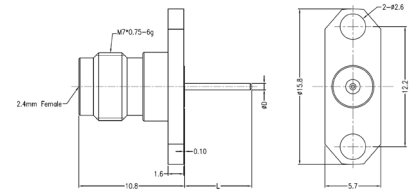
| Part Number    | Plug or Jack | Pin Diameter | Pin Length | Extended PTFE Dia | Extended PTFE Length |
|----------------|--------------|--------------|------------|-------------------|----------------------|
| RF240A2JEGADGA | Jack         | 0.30mm       | 1.50mm     | 4.00mm            | 1.40mm               |
| RF240A2JEGADGB | Jack         | 0.30mm       | 1.50mm     | 4.00mm            | 3.00mm               |
| RF240A2JEGADAA | Jack         | 0.30mm       | 1.50mm     | 1.67mm            | 1.40mm               |
| RF240A2JEGADAB | Jack         | 0.30mm       | 1.50mm     | 1.67mm            | 3.00mm               |
| RF240A2JEGCCBG | Jack         | 0.60mm       | 1.27mm     | 2.00mm            | 6.35mm               |
| RF240A2JEGCEBF | Jack         | 0.60mm       | 1.90mm     | 2.00mm            | 5.10mm               |

2.40mm Series Pin without Extended PTFE 2 Hole Flange



RF240A2PEGGM

- ⊕ Max Voltage 150V
- ⊕ Operating Temperature -40C to +85C
- ⊕ Frequency Range 0-50GHz
- ⊕ VSWR <1.30
- ⊕ Dielectric withstanding Voltage >500V
- ⊕ Available with Extended PTFE



| Part Number  | Plug or Jack | Flange Mount Length | Mount Hole Distance | Pin Diameter | Pin Length |
|--------------|--------------|---------------------|---------------------|--------------|------------|
| RF240A2JEGKG | Jack         | 15.80mm             | 12.20mm             | 1.20mm       | 3.00mm     |
| RF240A2JEGJJ | Jack         | 15.80mm             | 12.20mm             | 1.04mm       | 6.34mm     |
| RF240A2JEGII | Jack         | 15.80mm             | 12.20mm             | 1.00mm       | 5.50mm     |
| RF240A2JEGGM | Jack         | 15.80mm             | 12.20mm             | 0.86mm       | 8.75mm     |
| RF240A2JEGEN | Jack         | 15.80mm             | 12.20mm             | 0.75mm       | 9.00mm     |
| RF240A2JEGDK | Jack         | 15.80mm             | 12.20mm             | 0.64mm       | 6.84mm     |
| RF240A2JEGDO | Jack         | 15.80mm             | 12.20mm             | 0.64mm       | 10.00mm    |
| RF240A2PEGGM | Plug         | 15.80mm             | 12.20mm             | 0.86mm       | 8.75mm     |
| RF240A2PEGDO | Plug         | 15.80mm             | 12.20mm             | 0.64mm       | 10.00mm    |

---

**Electrical:**

|                            |         |
|----------------------------|---------|
| Insulation Resistance:     | >5000MΩ |
| Impedance:                 | 50Ω     |
| Centre Contact Resistance: | <4.0mΩ  |
| Outer Contact Resistance:  | <2.5mΩ  |

---

**Mechanical:**

|                           |                  |
|---------------------------|------------------|
| Centre Contact Retention: | >20N             |
| Coupling Torque:          | 0.80Nm to 1.10Nm |
| Coupling Torque RPC N:    | 1.36Nm           |
| Cycles:                   | >500             |

---

**Material**

|            |                                |
|------------|--------------------------------|
| Body:      | Passivation of Stainless Steel |
| Contact:   | Beryllium Copper               |
| Insulator: | UNFILLED ULTEM 1000            |
| RoHS:      | Compliant                      |