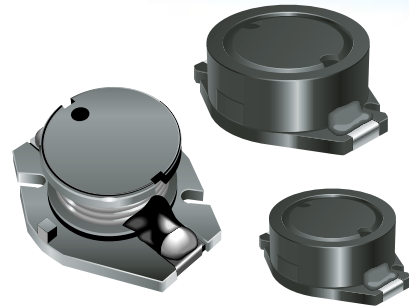


Product Update Memo

INDUCTIVE COMPONENTS

February, 2006

Bourns Manufacturers Representatives
 Distributor Product Line Managers
 Americas Sales Team
 Asia Sales Team
 Europe Sales Team
 Bourns Internal



Solder Temperature of “Oval Shaped” Power Chokes Meets J-STD-020C

The maximum soldering temperature for the models listed below has been revised to +250 °C, in accordance with J-STD-020C, Table 4-2, for components with a height greater than 2.5 mm. In 2005, we reduced the maximum soldering temperature of +230 °C for these models. A recent design improvement allows an increase of the maximum soldering temperature to meet the JEDEC J-STD-020C standard.

All of the models listed that shipped after February 1, 2006 may be soldered at a temperature of +250 °C maximum per J-STD-020C.

- [SDR1005](#), [SDR1806](#), and [SDR2207](#) (non-shielded)
- [SRR0804](#), [SRR0805](#), [SRR1003](#), [SRR1005](#), [SRR1806](#), and [SRR6603](#) (shielded)

The complete soldering profile may be found on the updated specification sheets on the Bourns website at www.bourns.com, under “Inductors.”

Contacts:

Americasgreg.gray@bourns.comPhone: 541-496-4837

Europe and Asia.....guido.zehnder@bourns.comPhone: +41-41-768-5566

Best regards,

Guido Zehnder
 PLM Inductive Components