

**Sent:** Wednesday, January 28, 2015 3:33 PM  
**Subject:** 44 Trimmer Series Recall  
**Importance:** High

Dear TT electronics distributors,

please be advised that TT electronics – BI Technologies – has decided to recall 44 Trimmer series product manufactured within a certain timeframe. You will find more details attached.

Please advise the customers you have sold affected parts to as soon as possible.

For detailed information on how to process potential returns etc., please contact your customer service representative at BI.

We apologize for any inconvenience this will cause.

Mit freundlichen Grüßen / With best regards

---

TT Electronics GmbH

[www.ttelectronics.com](http://www.ttelectronics.com)



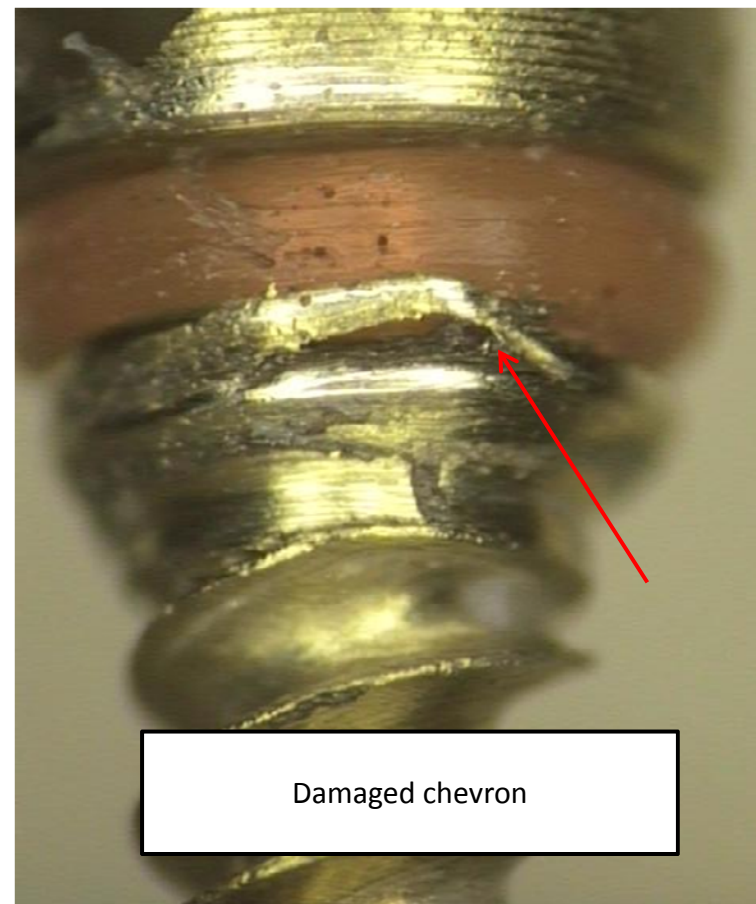
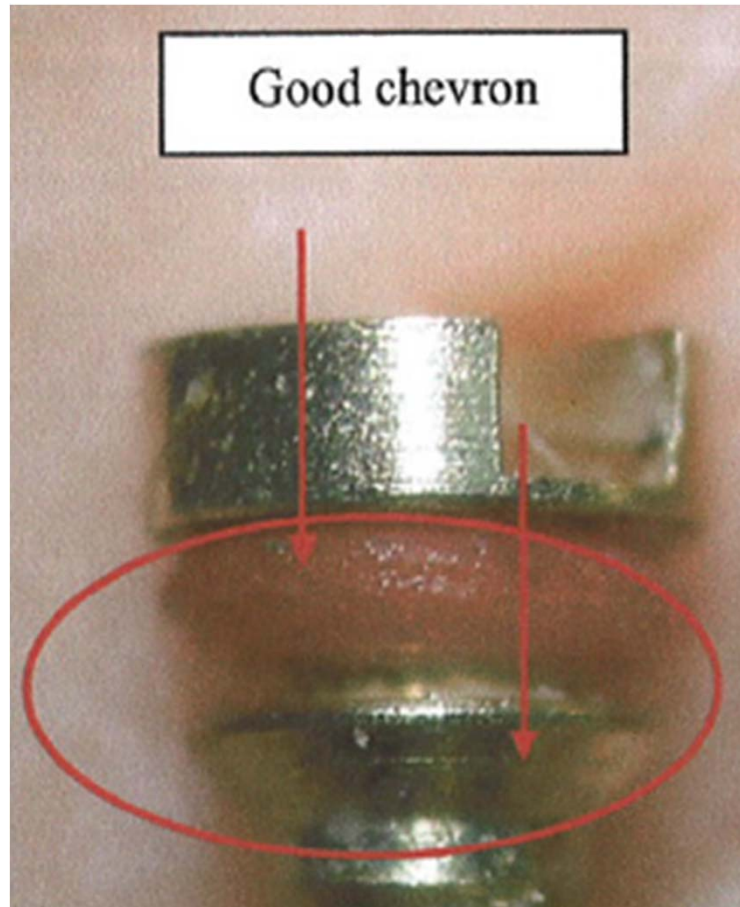
**BI Technologies**

**Model 44/45 Shaft Failure  
2014**

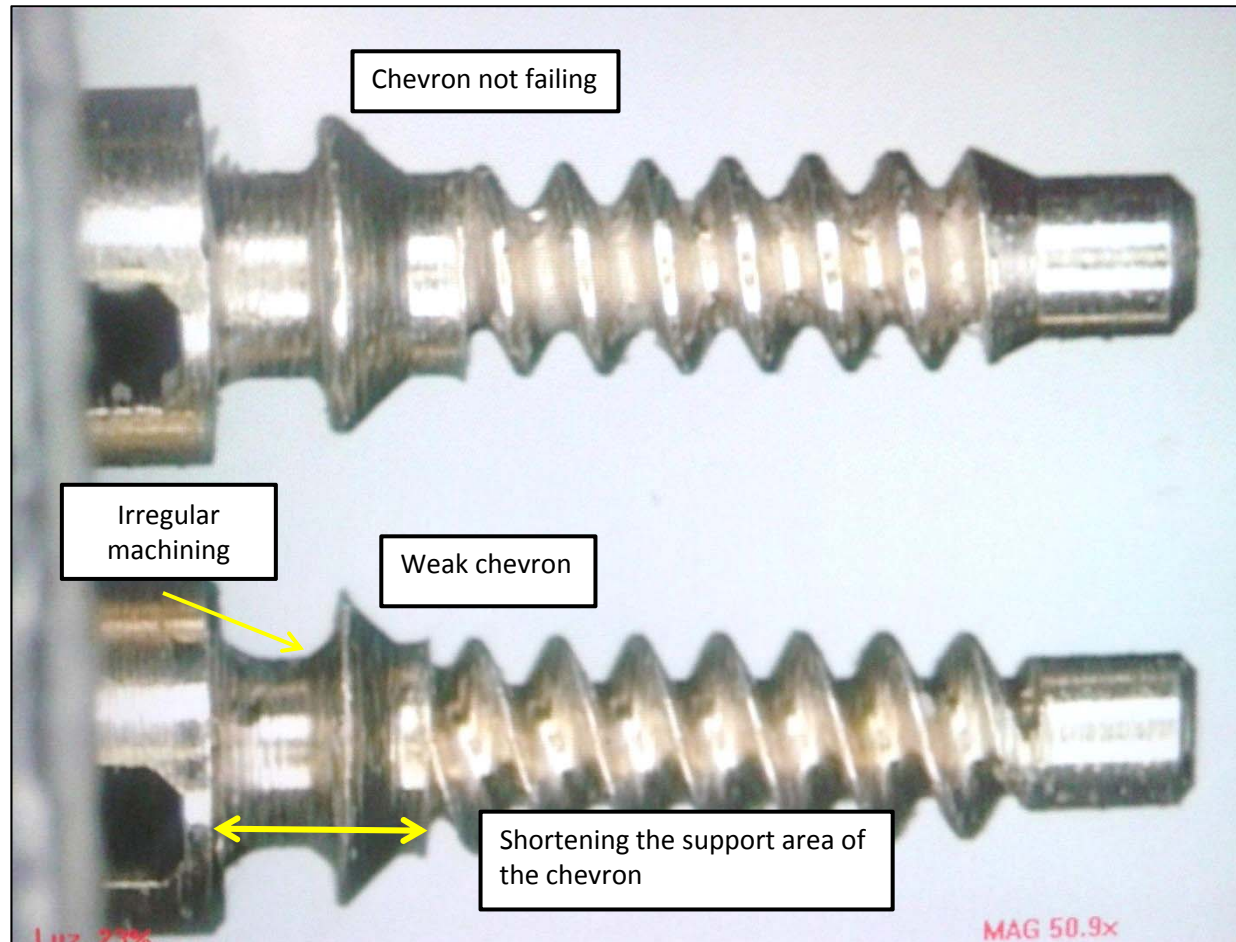


Model 44 Trimmer quality was compromised due to bad adjustment shafts. Subsequent to 8D analysis of first complaints in November, 2014, we concluded that parts manufactured from May 2014 to October 2014 are susceptible to this quality issue. Normal processing and testing at BI did not reveal this defect, leading to the escape.

Investigation lead to a dimension issue on shafts causing shafts to back out of trimmer when adjusting manually.



# Shaft Defect – Weak Chevron



# Affected Date Code

Affected parts shipped from May-2014 through 21-Oct-2014  
 Clean Break Date – Oct 22, 2104  
 Average Defect rate estimates at 20%

Sensing and Control

1) DATE CODE ON THE LABEL: 4 DIGITS  
 (YEAR & WEEK)

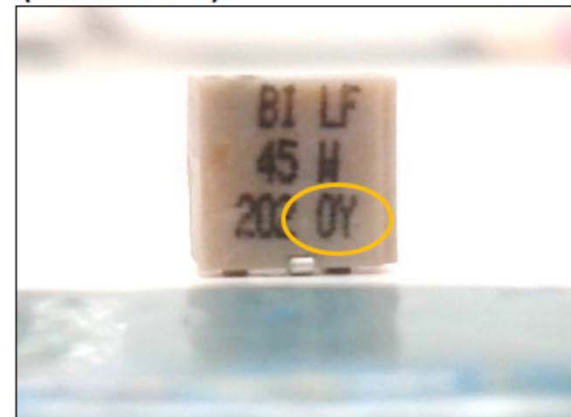


Suspect Codes from 1418 to 1443

14= 2014  
 XX= Week

| 2014 | 2 DIGITS | 4 DIGITS |
|------|----------|----------|
| JAN  | OL       |          |
| FEB  | OM       |          |
| MAR  | ON       |          |
| APR  | OO       |          |
| MAY  | OP       | 1418     |
| JUN  | OR       | *        |
| JUL  | OS       | *        |
| AUG  | OT       | *        |
| SEP  | OU       | *        |
| OCT  | OV       | 1443     |
| NOV  | OW       |          |
| DEC  | OY       |          |

2) DATE CODE ON THE UNIT: 2 DIGITS  
 (YEAR & MONTH)



Suspect Codes from OP to Ov

O = 2014  
 P, Q, R, etc.= Month

Material

44GR2KLFT13

44JR50KLFT7

44WR250KLFT7

44WR50KLFT7

44GR100KLFTB

44WR10KLFT7

44WR100KLFT7

44WR200KLFT7