



DOCUMENT / PART NO.: SI-52007-F

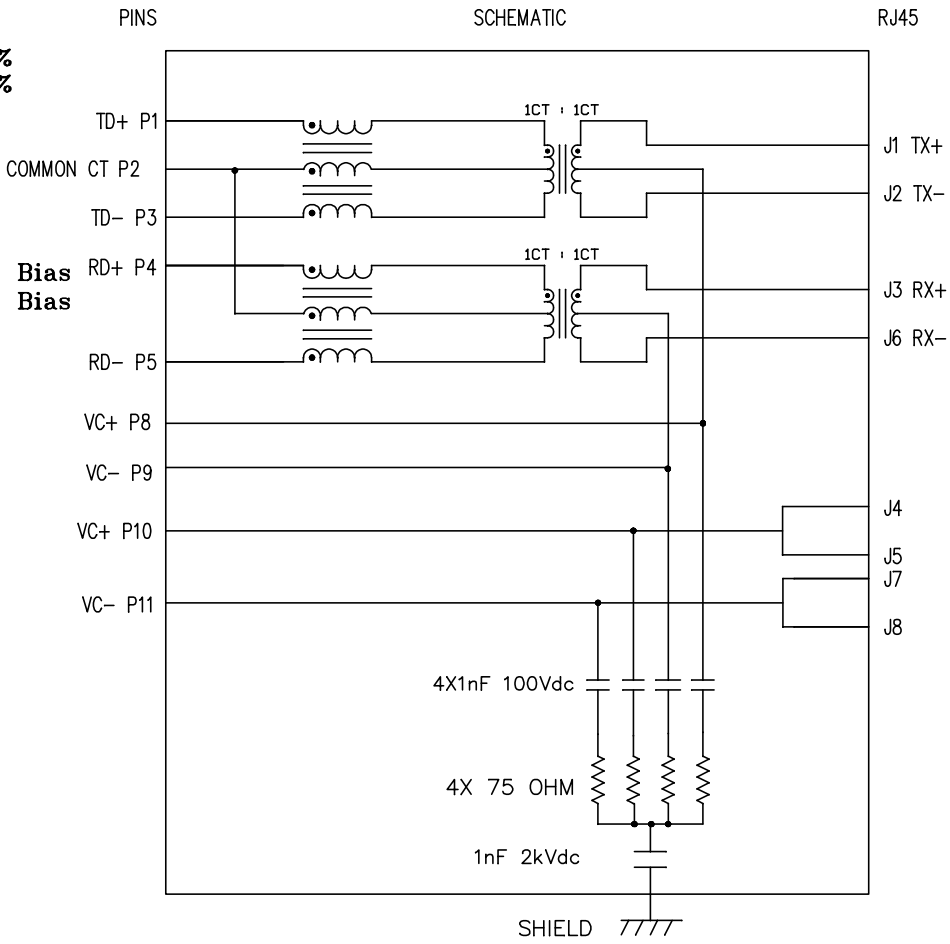
TITLE : 10/100BT, PoEP, TAB UP, SHIELDED

ISSUE	DESCRIPTION OF CHANGE								REVIEWED BY				APPROVED BY				ECN#	
01	Release for sample building.								David Chan				Steve Weller				06296	



ELECTRICAL CHARACTERISTICS @ 25°C

1.0	TURNS RATIO:	(P1-P3) : (J1-J2)	: 1CT : 1CT ± 2%
		(P4-P5) : (J3-J6)	: 1CT : 1CT ± 2%
2.0	DC RESISTANCE:	(P1-P3); (P4-P5)	: 1.2 OHMS
		(J1-J2); (J3-J6)	: 0.8 OHMS
3.0	INDUCTANCE:	(P1-P3)	: 350uH MIN. @ 0.1V, 100KHz, 12mA DC Bias
		(P4-P5)	: 350uH MIN. @ 0.1V, 100KHz, 12mA DC Bias
4.0	RETURN LOSS:	(P1-P3)=100 OHMS REF. AND (P4-P5)=100 OHM REF.	
		1MHz TO 30MHz	: 16dB MIN.
		60MHz TO 80MHz	: 10dB MIN.
5.0	INSERTION LOSS:	RS & RL =100 ohms	
		1MHz TO 100MHz	: 1.5 dB MAX
6.0	CROSS TALK:	1MHz - 100 MHz	: 30 dB MIN.
7.0	DIELECTRIC WITHSTAND:	(P1-P3) TO (J1-J2)	: 2000 Vrms
		(P4-P5) TO (J3-J6)	: 2000 Vrms
8.0	BALANCED DC LINE CURRENT:	USED PAIRS	: 700mA MAX
		UNUSED PAIRS	: 700mA MAX



ORIGINATED BY	DATE	TITLE <div>MagJack®</div> <div>10/100BT, PoEP TAB UP, SHIELDED</div>	PART NO. / DRAWING NO.	STANDARD DIM.		[] METRIC DIM. AS REFERENCE		<div>bel</div> <div>COMPONENTS FOR A CONNECTED PLANET</div>
Bain Liu	03-09-09		SI-52007-F	TOL. IN INCH		UNIT : INCH [mm]	REV. : 01	
DRAWN BY	DATE		FILE NAME	.X	<div></div>	SCALE : N/A	SIZE : A4	
LW Yuan	03-09-09		SI-52007-F.DWG	.XX				
			.XXX	±0.005		<div></div>	PAGE : 2	

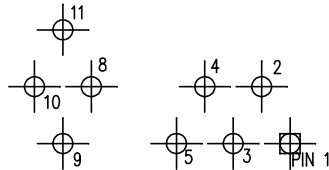
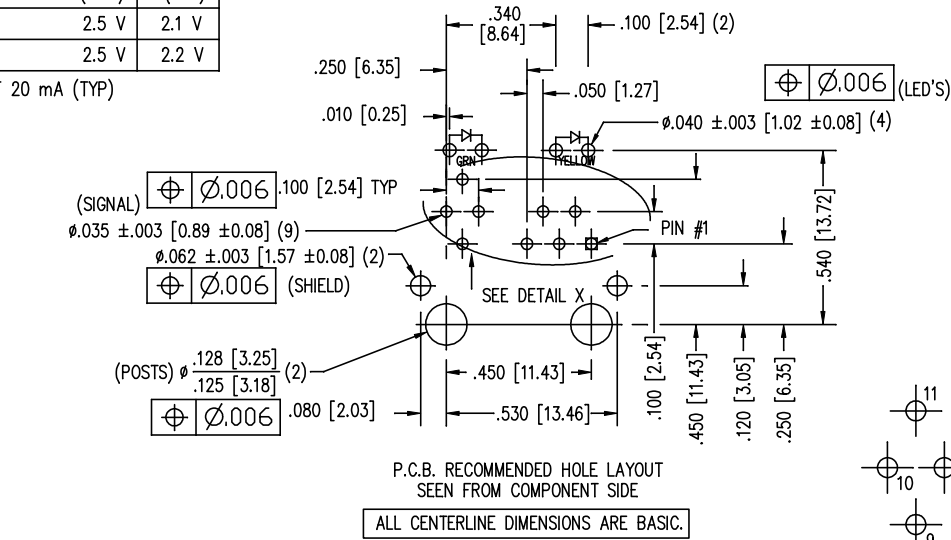
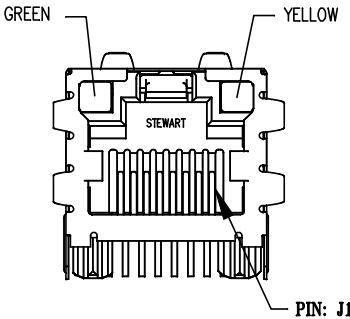
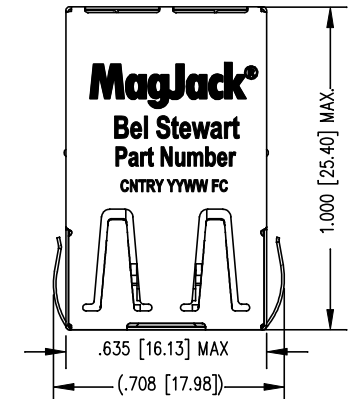
THE INFORMATION CONTAINED HEREIN IS CONSIDERED "PROPRIETARY" TO BEL FUSE INC. AND SHALL NOT BE COPIED, REPRODUCED OR DISCLOSED WITHOUT THE WRITTEN APPROVAL OF BEL FUSE INC.

RoHS
2002/95/EC



STANDARD LED	WAVELENGTH	Forward V (MAX)	* (TYP)
YELLOW	590 nm	2.5 V	2.1 V
GREEN	565 nm	2.5 V	2.2 V

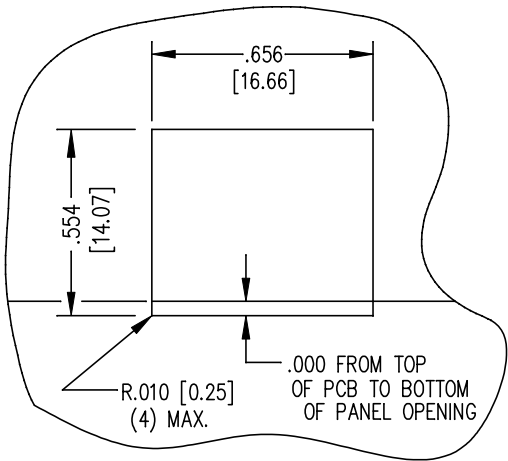
* WITH A FORWARD CURRENT OF 20 mA (TYP)



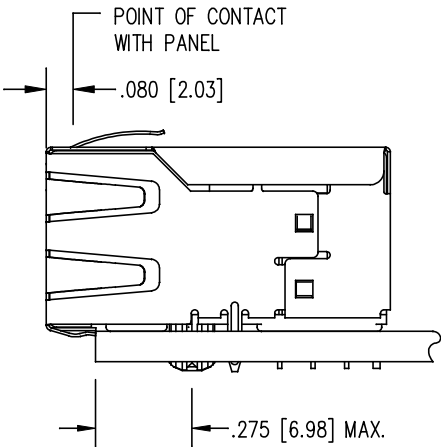
- NOTES:
- CONNECTOR MATERIALS:
HOUSING: THERMOPLASTIC UL94 V-0
CONTACT/SHIELD: COPPER ALLOY
SHIELD PLATING: NICKEL OR TIN
CONTACT PLATING: SELECTIVE GOLD,
50 MICRO-INCHES MIN. IN CONTACT AREA.
 - PIN NOT ELECTRICALLY CONNECTED MAYBE OMITTED.
SEE ELECTRICAL DRAWING FOR OMITTED PINS.
 - TOLERANCES COMPLY WITH F.C.C. DIMENSION REQUIREMENTS.
 - ALL TOLERANCES NOT OTHERWISE SPECIFIED TO BE ± 0.005 [0.13]
 - REFLOW AND WAVE SOLDER COMPATIBLE -260°C FOR
10 SECONDS MAX.

ORIGINATED BY	DATE	TITLE	PART NO. / DRAWING NO.	STANDARD DIM.	[] METRIC DIM. AS REFERENCE
Bain Liu	03-09-09	MagJack® 10/100BT, PoEP TAB UP, SHIELDED	SI-52007-F	TOL. IN INCH	UNIT : INCH [mm] REV. : 01
DRAWN BY	DATE		FILE NAME	.X	SCALE : N/A SIZE : A4
LW Yuan	03-09-09		SI-52007-F.DWG	.XX	PAGE : 3
				.XXX	±0.005



THE INFORMATION CONTAINED HEREIN IS CONSIDERED "PROPRIETARY" TO BEL FUSE INC. AND SHALL NOT BE COPIED, REPRODUCED OR DISCLOSED WITHOUT THE WRITTEN APPROVAL OF BEL FUSE INC.



SUGGESTED PANEL OPENING



- 1. THE SUGGESTED PANEL OPENING IS INTENDED TO GIVE THE USER THE ABILITY TO HAVE REASONABLE JACK / PANEL CLEARANCES YET MAINTAIN RELIABLE GROUNDING CAPABILITY.
- 2. ALL TOLERANCES NOT OTHERWISE SPECIFIED TO BE ± 0.005 [0.13]

ORIGINATED BY	DATE	TITLE MagJack® 10/100BT, PoEP TAB UP, SHIELDED	PART NO. / DRAWING NO.	STANDARD DIM.		[] METRIC DIM. AS REFERENCE		 COMPONENTS FOR A CONNECTED PLANET
Bain Liu	03-09-09		SI-52007-F	TOL. IN INCH		UNIT : INCH [mm]	REV. : 01	
DRAWN BY	DATE		FILE NAME	.X		SCALE : N/A	SIZE : A4	
LW Yuan	03-09-09		SI-52007-F.DWG	.XX			PAGE : 4	
				.XXX	± 0.005			