

May, 2004

Product Change Notice

Dear Valued Customer,

Re: Signal Transformer MPI, M4L, HPI Transformers

Signal Transformer is implementing a change to the connectors mounted to our MPI-, M4L-, and HPI- family of Laminated Power Transformers. Your company has procured one or more of these products over the last 3 years. These are “running changes” which will be phased in over time beginning in May, 2004.

We are making these changes to improve the reliability of our Transformer by minimizing damage to the connectors. Our new design incorporates a modular terminal component assembly which is less prone to shipping and handling damage than the connectors currently used.

The new terminal assembly offers the same functionality as the singular terminal components while providing the following advantages:

- Lower profile
- Higher Ampacity
- Less susceptible to physical damage
- Safety cover can be completely removed to ease servicing
- Housing allows multiple terminal population schemes
- Retains all VDE, CSA, UL and TUV Certifications.

For your reference, attached is a Drawing of our new modular connector assembly and a list of the dimensional changes.

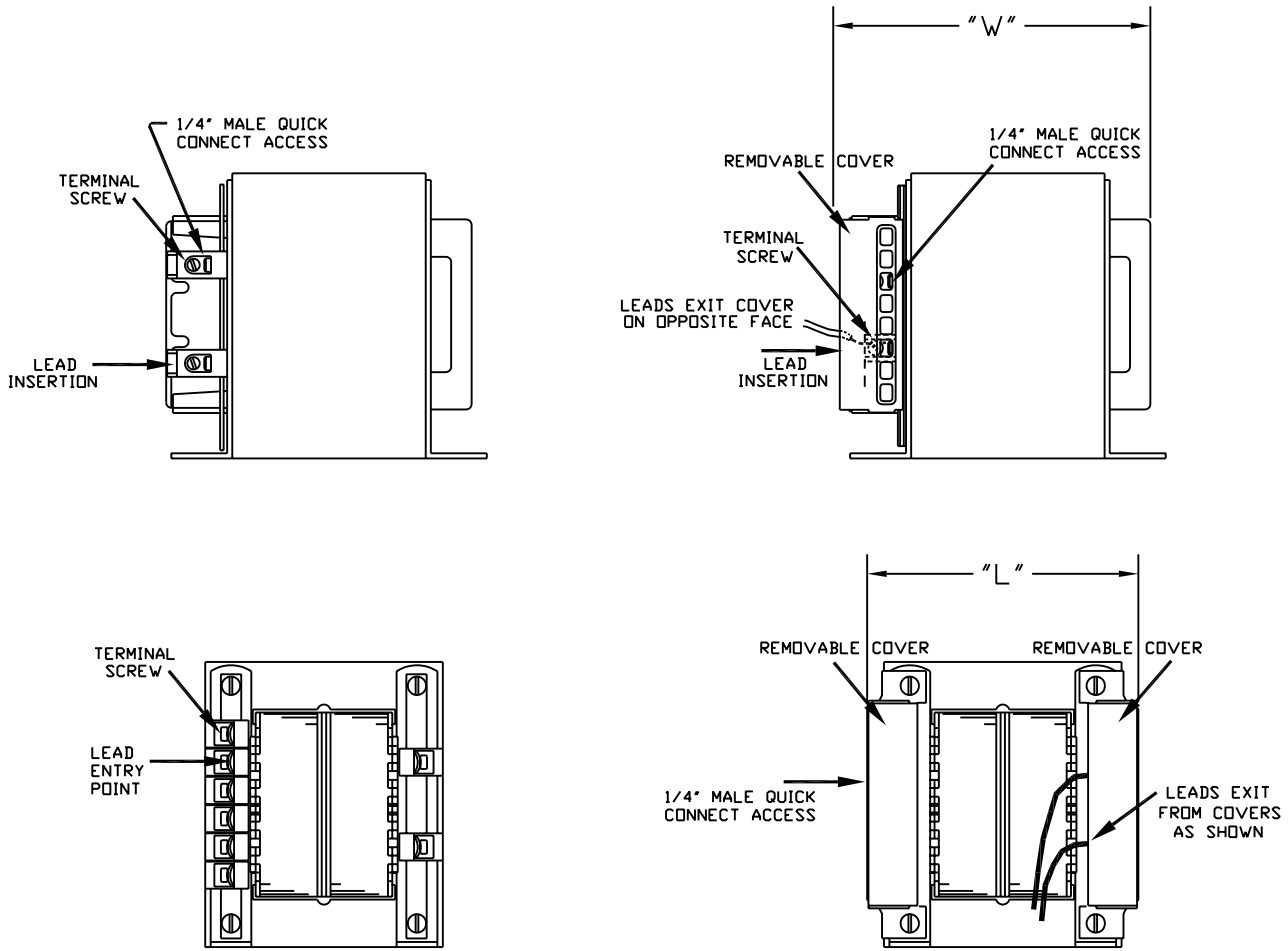
Please ensure the appropriate personnel within your company are advised of this change.

Please address any technical inquires relevant to this product change notice to our engineering department at techhelp@signaltransformer.com, and any Customer Service inquires to sales@signaltransformer.com, or by phone at our toll free # 1-866-239-5777.

Thank you.

Signal Transformer Management

SIGNAL "M4L" SERIES



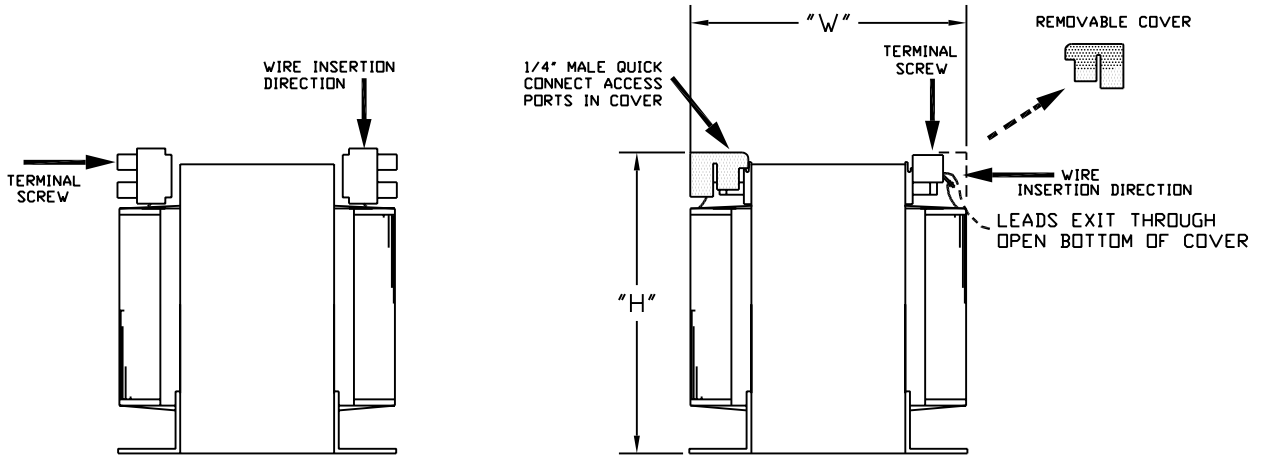
CURRENT TERMINAL CONFIGURATION

NEW TERMINAL CONFIGURATION

PART #	"L"	Change	"W"	Change
M4L-3	4.10"	+ .60"	4.90"	0.00"
M4L-6	4.45"	+ .58"	4.96"	+ .03"
M4L-10	4.85"	- .52"	5.81"	- .06"

SEE OVERLEAF FOR "HPI" & "MPI" SERIES

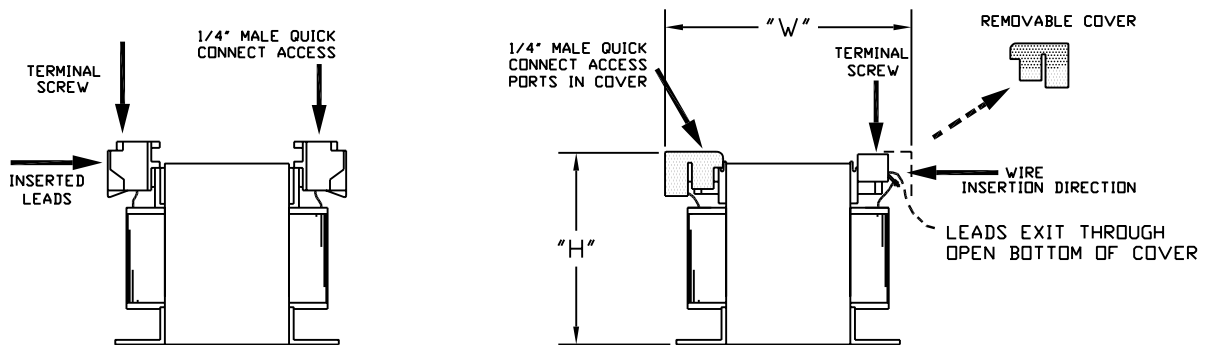
SIGNAL "HPI" SERIES



CURRENT TERMINAL CONFIGURATION NEW TERMINAL CONFIGURATION

PART #	"H"	Change	"W"	Change
HPI-12	6.04"	-.02"	4.90"	0.00"
HPI-15	6.04"	-.02"	5.24"	+.02"
HPI-17	6.05"	-.01"	5.73"	+.03"
HPI-20	6.60"	+.04"	5.00"	-.03"
HPI-27	6.60"	+.04"	5.65"	-.25"
HPI-35	6.60"	+.04"	6.75"	-.25"

SIGNAL "MPI" SERIES



CURRENT TERMINAL CONFIGURATION NEW TERMINAL CONFIGURATION

PART #	"H"	Change	"W"	Change
MPI-200	3.69"	-.03"	4.21"	+.01"
MPI-250	3.88"	-.12"	3.92"	+.02"
MPI-300	3.88"	-.12"	4.23"	+.01"
MPI-400	3.88"	-.12"	4.81"	0.00"
MPI-650	4.63"	-.17"	4.49"	+.06"
MPI-900	4.63"	-.17"	5.27"	-.03"

SEE OVERLEAF FOR "M4L" SERIES