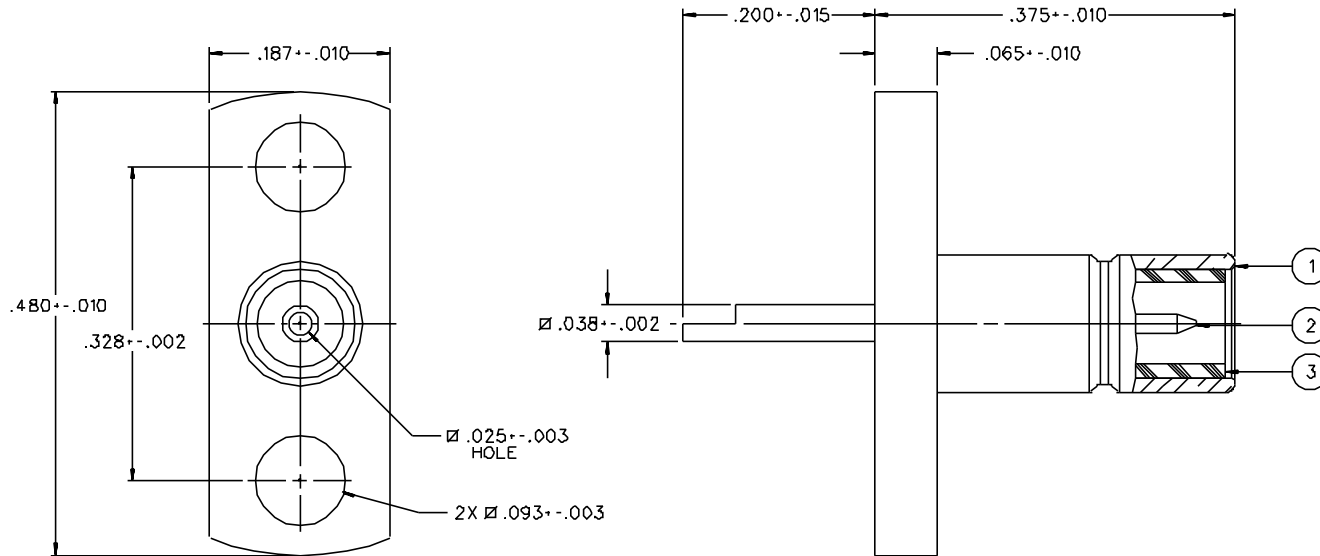


| PART NUMBER | ITEM ① BODY | ITEM ② CONTACT | ITEM ③ INSULATOR |
|--------------|---|---|---------------------|
| 131-3701-621 | BRASS GOLD PL .00001 MIN OVER NICKEL PL .00005 MIN OVER COPPER PL .00005 MIN | BRASS GOLD PL .00003 MIN OVER NICKEL PL .00005 MIN OVER COPPER PL .00005 MIN | TEFLON |
| 131-3701-626 | BRASS NICKEL PL .0001 MIN OVER COPPER PL .00005 MIN | BRASS GOLD PL .00003 MIN OVER NICKEL PL .00005 MIN OVER COPPER PL .00005 MIN | TEFLON |



NOTES:

1. SPECIFICATIONS:

IMPEDANCE: 50 OHMS
 FREQUENCY RANGE: 0-4 GHz
 VSWR: NOT APPLICABLE
 WORKING VOLTAGE: 335 VRMS MAX AT SEA LEVEL
 DIELECTRIC WITHSTANDING VOLTAGE: 1000 VRMS MIN AT SEA LEVEL
 INSULATION RESISTANCE: 1000 MEGOHM MIN
 CONTACT RESISTANCE:
 CENTER CONTACT - INITIAL 6 MILLIOHM MAX, AFTER ENVIRONMENTAL 8 MILLIOHM MAX
 OUTER CONDUCTOR - GOLD PLATED INITIAL 1 MILLIOHM MAX, AFTER ENVIRONMENTAL 1.5 MILLIOHM MAX
 NICKEL PLATED INITIAL 2.5 MILLIOHM MAX, AFTER ENVIRONMENTAL 3.5 MILLIOHM MAX
 BRAID TO BODY - NOT APPLICABLE
 CORONA LEVEL: NOT APPLICABLE
 INSERTION LOSS: NOT APPLICABLE
 RF LEAKAGE: NOT APPLICABLE
 RF HIGH POTENTIAL WITHSTANDING VOLTAGE: 600 VRMS AT 4 AND 7 MHZ

MECHANICAL:

ENGAGE/DISENGAGE FORCE: INITIAL 14 LBS MAX AFTER DURABILITY 14 LBS MAX
 ENGAGEMENT, 2 LBS MIN DISENGAGEMENT
 MATING TORQUE: NOT APPLICABLE
 COUPLING PROOF TORQUE: NOT APPLICABLE
 COUPLING NUT RETENTION: NOT APPLICABLE
 CONTACT RETENTION: 4 LBS MIN AXIAL FORCE
 CABLE ACCEPTABILITY: NOT APPLICABLE
 CABLE HEX CRIMP SIZE: NOT APPLICABLE
 CABLE RETENTION: NOT APPLICABLE
 DURABILITY: 500 CYCLES MIN

ENVIRONMENTAL:

{MEETS OR EXCEEDS THE APPLICABLE PARAGRAPH OF MIL-C-39012}
 THERMAL SHOCK: MIL-STD-202, METHOD 107, CONDITION B
 OPERATING TEMPERATURE: -65 DEG C TO 165 DEG C
 CORROSION: MIL-STD-202, METHOD 101, CONDITION B
 SHOCK: MIL-STD-202, METHOD 213, CONDITION B
 VIBRATION: MIL-STD-202, METHOD 204, CONDITION B

| | | | |
|--|----------|---------|-----------|
| DRAWING NO. C - 131-3701-621/630 | | | |
| 0 REVISIONS | | | |
| CHANGED: REVISED AND REDRAWN. WAS "C" SIZE, DATED 2-26-86. | | | |
| 03 | 03-23-BB | EJ | RRFRJJB |
| CHANGED: RF HIGH POT 4 AND 7 MHZ WAS 5 MHZ | | 5-12-88 | ECG 23367 |
| 4 | 9-10-93 | RH | 9-20-93 |
| CHANGED: .32B-.002 WAS .32B-.010 | | 8 8 8 8 | ECG 42025 |
| * REVISION NUMBER FOLLOWED BY AN ALPHA * | | | |
| * CHARACTER INDICATES DRAWING CLASS * | | | |
| * CATION OR PART NUMBER ADDITION ONLY * | | | |
| 4a | 2-6-96 | RH | ECN 43932 |

CUSTOMER DRAWING

THIS DRAWING TO BE INTERPRETED PER ANSI Y 14.5M - 1982

"μSTATION"

COMPANY CONFIDENTIAL

| | | | | | |
|--------------------------------------|----|--------------------|-----------------|---|-------------------------------------|
| TOLERANCE UNLESS OTHERWISE SPECIFIED | | DRAWN BY EJ | DATE 3-23-88 | JOHNSON CINCH CONNECTIVITY SOLUTIONS | |
| DECIMALS .XX | mm | CHECKED BY | DATE | TITLE JACK ASSEMBLY FLANGE MOUNT SMB | |
| .XXX | | APPROVED BY RRF | DATE 5-5-88 | CODE NO. | DRAWING NO. C - 131-3701-621/630 |
| FINISH | | APPROVED BY RJB | DATE 5-9-88 | SCALE 10:1 | U/W INCH SHEET 2 OF 2 |
| RELEASE DATE | | | 5-12-88 | | |

Cinch Connectivity Solutions
 299 Johnson Ave. Ste. 100
 Waukegan, MN 56003
 1-800-247-8256