

---

## Product Change Notification(PCN)

---

Issue Date: 06.09.2012  
Modification / Revision Date: 15.08.2012

### D-Sub, IDC, w/o insulator support, 9-37 ways (2010 catalogue page 17)

Change Notification # : PCN 20120906-A-DxF xxLPIII/Z

Description of changes:

1. Amendment of the specification
2. Operating temperature : New : -20°C to +85°C
3. Current rating : New : 3Amp
4. Contact resistance : New : 20mOhm max at 1AMP DC
5. Shell size height : New : 12.55mm
6. MALE : Dimension mating height : New : 6.1mm
7. MALE : Dimension overall height : New : 17.58mm
8. FEMALE : Dimension mating height : New : 5.8mm
9. FEMALE : Dimension overall height : New : 17.28mm
10. Catalogue 2010 shows different specification
11. Draw.-No. ASS 4891 COrev01 substitutes ASS 0128 COrev03  
Draw.-No. ASS 4891 COrev01 substitutes ASS 3546 COrev01

Date of change and Implementation: Change: June 2010 / Implementation: 15.08.2012

Key Characteristics of Change: Electrical features - some tiny dimensions and tolerances

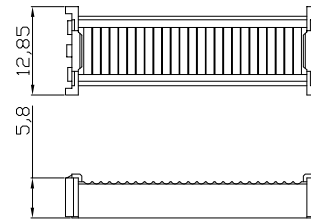
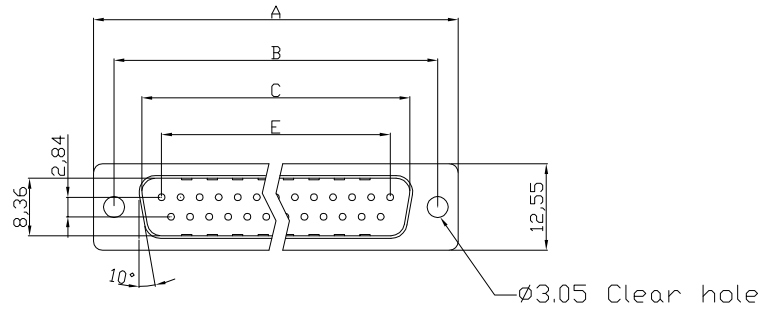
Products Affected: A-DSF xxLPIII/Z 09-37 ways  
A-DFF xxLPIII/Z 09-37 ways

Reason for Change: Change of manufacturing location

Response : No response to this notification is required.



**Male**



**Cover**

**Product Specification**

**Material**

Insulator : Glass-Filled Thermoplastic PBT, UL94V-0,Black  
 Contact : Copper alloy, plating gold flash selective gold  
 Shell : Steel, 100u" Tin Over 50u" min Copper

**Electrical**

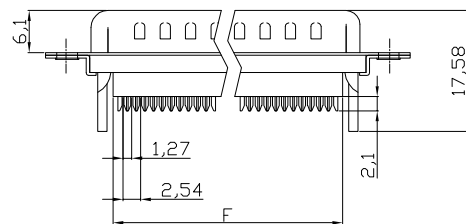
Contact Resistance : 20 milliohms Max at 1 AMP DC.  
 Insulation Resistance : 1000 magohms at 500 VDC  
 Dielectric Withstanding Voltage : 1000 VAC/rms 60Hz for 1 minute  
 Current Rating : 3 AMP  
 Volatge Rating : 250 VAC/rms 60Hz  
 Operating Temperature: -20°C~+85°C

① UL E No #E149426(T)

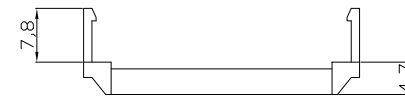
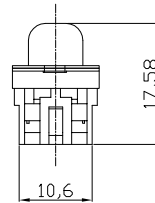
**Order Code:**

A-DxF xx LPIII/Z

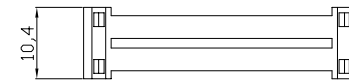
Contact style: F - Female  
 S - Male  
 No. of Contacts: 09 / 15 / 25 / 37  
 Standard: Quality class III



**Without Insulator Support**



**Strain Relief**



**Dimensions**

Positions	A	B	C	E	F
9	30.81	24.99	16.92	11.08	13.10
15	39.20	33.30	25.25	19.39	20.70
25	53.04	47.04	38.96	33.24	33.68
37	69.40	63.50	55.42	49.86	50.30

**RoHS compliant**

Unit:mm

Scale	Free						Date	Name	Customer-No.
	TOLERANCE								
X.	±0.38						15.08.2012	Lucas	ASSMANN WSW-No. <b>A-DxF xx LPIII/Z</b>
X.X	±0.25								
X.XX	±0.13								Drawing-No. <b>ASS 4891 CO</b>
DIM	TOL								
X.°	±3°	①	add the UL file No.	18.10.2012	Winnie	<b>ASSMANN</b> WSW/ components			rev01
X.X°	±1.0°	②	Drawn	15.08.2012	Lucas				
Angle	TOL	Id.	Modification	Date	Name				Sheet 1/2

A

B

C

D

E

F

G

H

1

2

3

4

5

6

7

1

2

3

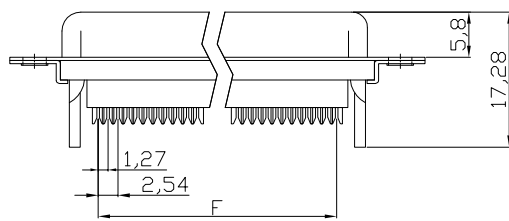
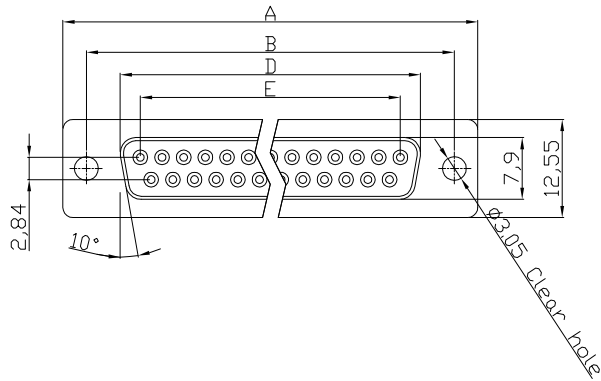
4

5

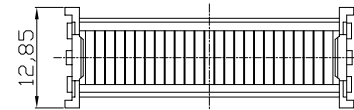
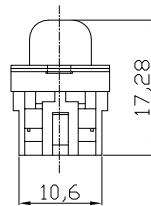
6

7

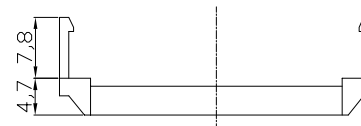
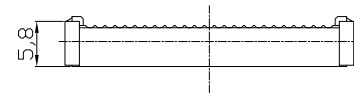
# Female



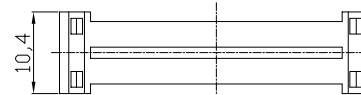
Without Insulator Support



Cover



Strain Relief



**NOTES:**

**MATERIAL**

- 1. Insulator Material: Glass-Filled Thermoplastic PBT, UL 94V-0
- 2. Contact Material : Copper alloy
- 3. Shell : SPCC
- 4. Plating : Selective Gold Flash

**ELECTRICAL**

- 1. Current Rating : 3 AMP
- 2. Voltage Rating : 250 V AC/rms 60 Hz
- 3. Contact Resistance: 20mΩ max at 1 AMP DC
- 4. Insulation Resistance: 1000MΩ at 500 VDC
- 5. Withstand Voltage : 1000V AC/rms 60Hz for 1 minute
- 6. Operating temperature: -20°C+85°C

① UL E No #E149426(T)

**Dimensions**

Positions	A	B	D	E	F
9	30.81	24.99	16.33	11.08	10.16
15	39.20	33.30	24.70	19.39	17.78
25	53.05	47.04	38.40	33.24	30.48
37	69.40	63.50	54.80	49.86	45.72

## RoHS compliant

Unit: mm

Scale	Free					Date	Name	Customer-No.
TOLERANCE						Drawn	15.08.2012	Lucas
X.	±0.38					Approved	18.10.2012	Winnie
X.X	±0.25							
X.XX	±0.13							
DIM	TOL	①	Add the UL file No.	18.10.2012	Winnie			
X.°	±3°							
X.X°	±1.0°	②	Drawn	15.08.2012	Lucas			
Angle	TOL	Id.	Modification	Date	Name			

ASSMANN WSW-No. <b>A-DxF xx LP III/Z</b>	
Drawing-No. <b>ASS 4891 CO</b>	rev01
Replace	Sheet 2/2

1

2

3

4

5

6

7