
Product Change Notification(PCN)

Issue Date: 06.09.2012
Modification / Revision Date: 15.08.2012

D-Sub solder cups 9-37 ways (2010 catalogue page 8)

Change Notification # : PCN 20120906-A-DF XX LL/Z

Description of changes:

1. Amendment of the specification
2. Operating temperature : New : -20°C to +85°C
3. Catalogue 2010 shows different specification
4. Draw.-No. ASS 4884 COrev00 substitutes ASS 0232C COrev03
Draw.-No. ASS 4884 COrev00 substitutes ASS 0232 COrev02

Date of change and Implementation: Change: June 2010 / Implementation: 15.08.2012

Key Characteristics of Change: Operating temperature - some tiny dimensions and tolerances

Products Affected: A-DF xx LL/Z
A-DS xx LL/Z

Reason for Change: Change of manufacturing location

Response : No response to this notification is required.

ASSMANN WSW components GmbH
Auf dem Schüffel 1
D-58513 Lüdenscheid
Tel.: +49-2351 - 554-0
Fax: +49-2351 - 554-99226

Product Change Notification(PCN)

Issue date: 06.09.2012

Modification / Revision date: 15.08.2012

Reference Documents / Attachments:

Document: Drawing

ASSMANN WSW P/N	Drawing Number
A-DF xx LL/Z	ASS 4884 C0rev00
A-DS xx LL/Z	ASS 4884 C0rev00

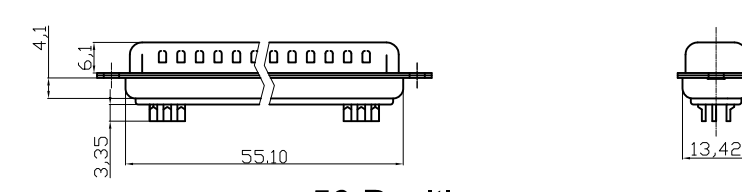
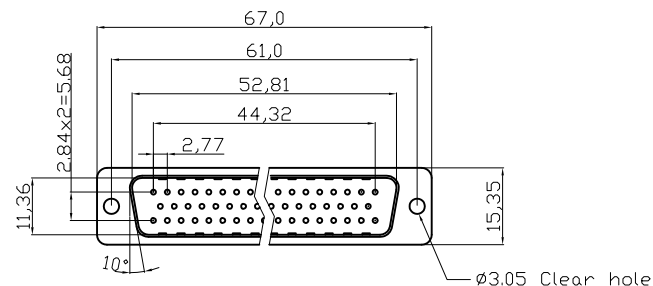
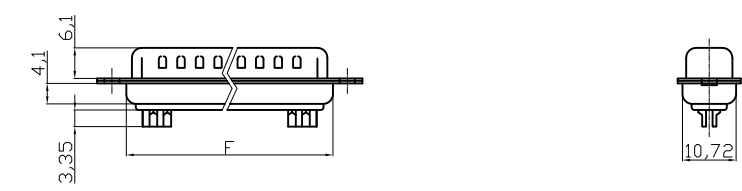
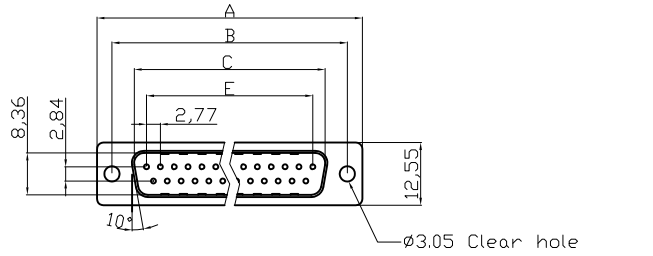
As attached

PCN Revision History:

Date of Revision:

Revision Number: 00

Male



50 Positions

Product Specification

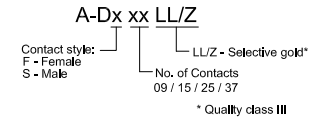
Material

- Insulator : Glass-Filled Thermoplastic PBT,UL94V-0,White
- Contact : Copper alloy, Gold flash selective gold
- Shell: SPCC
- Clinch Nut : Brass, Nickel Plated
- Screwlock : Brass, Nickel Plated

Electrical

- Contact Resistance : 20 milliohms Max at 1 AMP DC.
- Insulation Resistance : 1000 magohms at 500 VDC
- Dielectric Withstanding Voltage : 1000 VAC/rms 60Hz for 1 minute
- Current Rating : 3 AMP
- Volatge Rating : 250 VAC/rms 60Hz
- OPERATING TEMPERATURE:-20°C+85°C

Order Code:



Dimensions

Positions	A	B	C	E	F
9	30.81	24.99	16.92	11.08	19.20
15	39.20	33.30	25.25	19.39	27.70
25	53.04	47.04	38.96	33.24	41.10
37	69.40	63.50	55.42	49.86	57.30

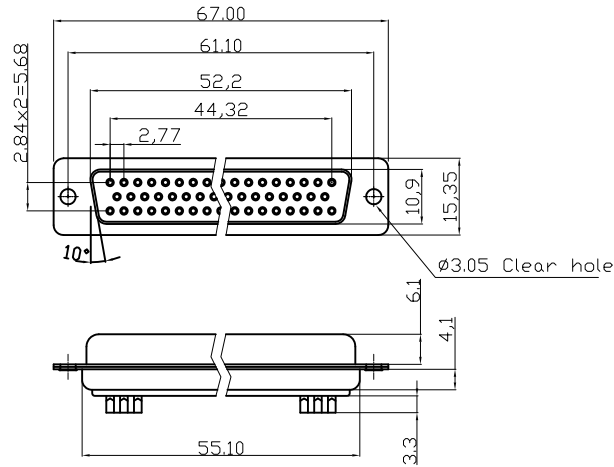
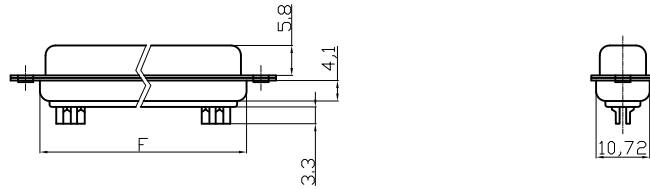
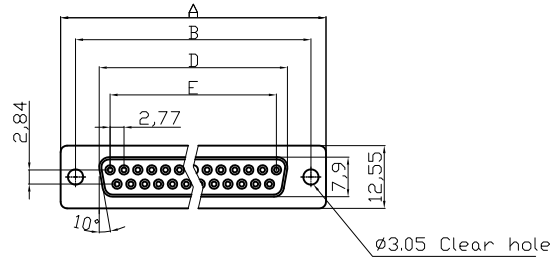
RoHS compliant
Unit: mm

Scale	Free				Date	Name	Customer-No.
TOLERANCE					Drawn	15.08.2012	Lucas
X.	±0.38				Approved	15.08.2012	Winnie
X.X	±0.25						
X.XX	±0.13						
DIM	TOL						
X.°	±3°						
X.X°	±1.0°	©	Drawn	15.08.2012	Lucas		
Angle	TOL	Id.	Modification	Date	Name		



Drawing-No.		ASS 4884 CO	rev00
Replace			
Sheet		1/2	

Female



50 Positions

Product Specification

Material

Insulator : Glass-Filled Thermoplastic PBT,UL94V-0,White
 Contact : Brass or Phosphor Bronze, Gold flash selective gold plating
 Shell : Steel, refer to ordering information for plating
 Clinch Nut : Brass, Nickel Plated
 Boardlock : Brass, Nickel Plated
 Screwlock : Brass, Nickel Plated

Electrical

Contact Resistance : 20 milliohms Max at 1 AMP DC.
 Insulation Resistance : 1000 megohms at 500 VDC
 Dielectric Withstanding Voltage :1000 VAC/rms 60Hz for 1 minute
 Current Rating : 3 AMP
 Voltage Rating : 250 VAC/rms 60Hz
 Operating Temperature : -20°C+85°C

Dimensions

Positions	A	B	D	E	F
9	30.81	24.99	16.33	11.08	19.20
15	39.20	33.30	24.70	19.39	27.70
25	53.05	47.04	38.40	33.24	41.10
37	69.40	63.50	54.84	49.86	57.30

RoHS compliant
Unit:mm

Scale	Free				Date	Name	Customer-No.
TOLERANCE					Drawn	15.08.2012	Lucas
X.	±0.38				Approved	15.08.2012	Winnie
X.X	±0.25						
X.XX	±0.13						
DIM	TOL						Drawing-No.
X.°	±3°						ASS 4884 CO rev00
X.X°	±1.0°	©	Drawn	15.08.2012			
Angle	TOL	Id.	Modification	Date	Name	Replace	Sheet 2/2



ASS 4884 CO
rev00
Sheet 2/2