



The receptacles shown below have .010" diameter contacts for good electrical transition to narrow microstrip lines. The reduced-diameter insulators are extended beyond the flange face to carry 50 ohm impedance through the microstrip package wall. All have captive contacts.

**Straight Jack Receptacle**

- 1/2" square flange

A = .057:

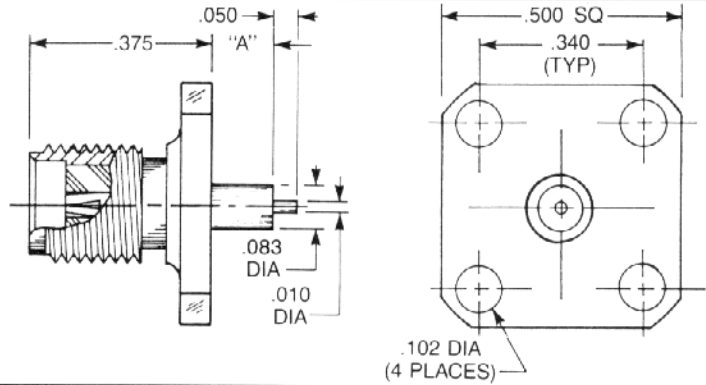
9304-1113-014 (Gold plated)

9304-9113-014 (Passivated)

A = .125

9304-1113-013 (Gold plated)

9304-9113-013 (Passivated)



**Straight Jack Receptacle**

- 2-hole flange

A = .057:

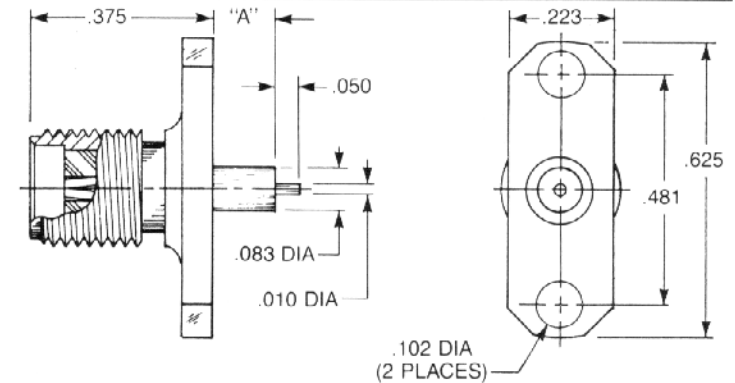
9308-1113-003 (Gold plated)

9308-9113-003 (Passivated)

A = .125:

9308-1113-001 (Gold plated)

9308-9113-001 (Passivated)



**Straight Jack Receptacle**

- 3/8" square flange

A = .057:

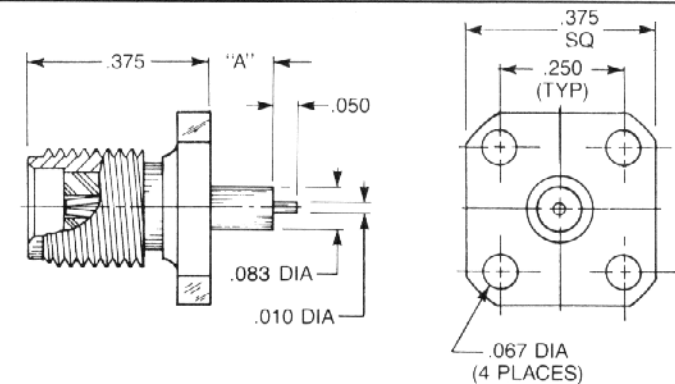
9376-1113-002 (Gold plated)

9376-9113-002 (Passivated)

A = .125:

9376-1113-001 (Gold plated)

9376-9113-001 (Passivated)



**Straight Jack Receptacle**

- Rectangular flange

A = .057:

9307-1113-002 (Gold plated)

9307-9113-002 (Passivated)

A = .125:

9307-1113-001 (Gold plated)

9307-9113-001 (Passivated)

