

4

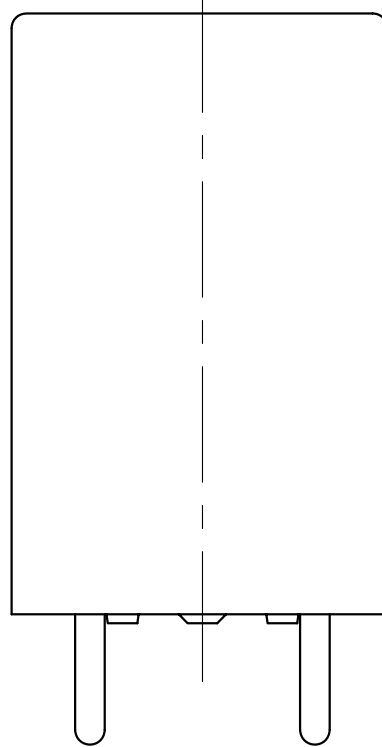
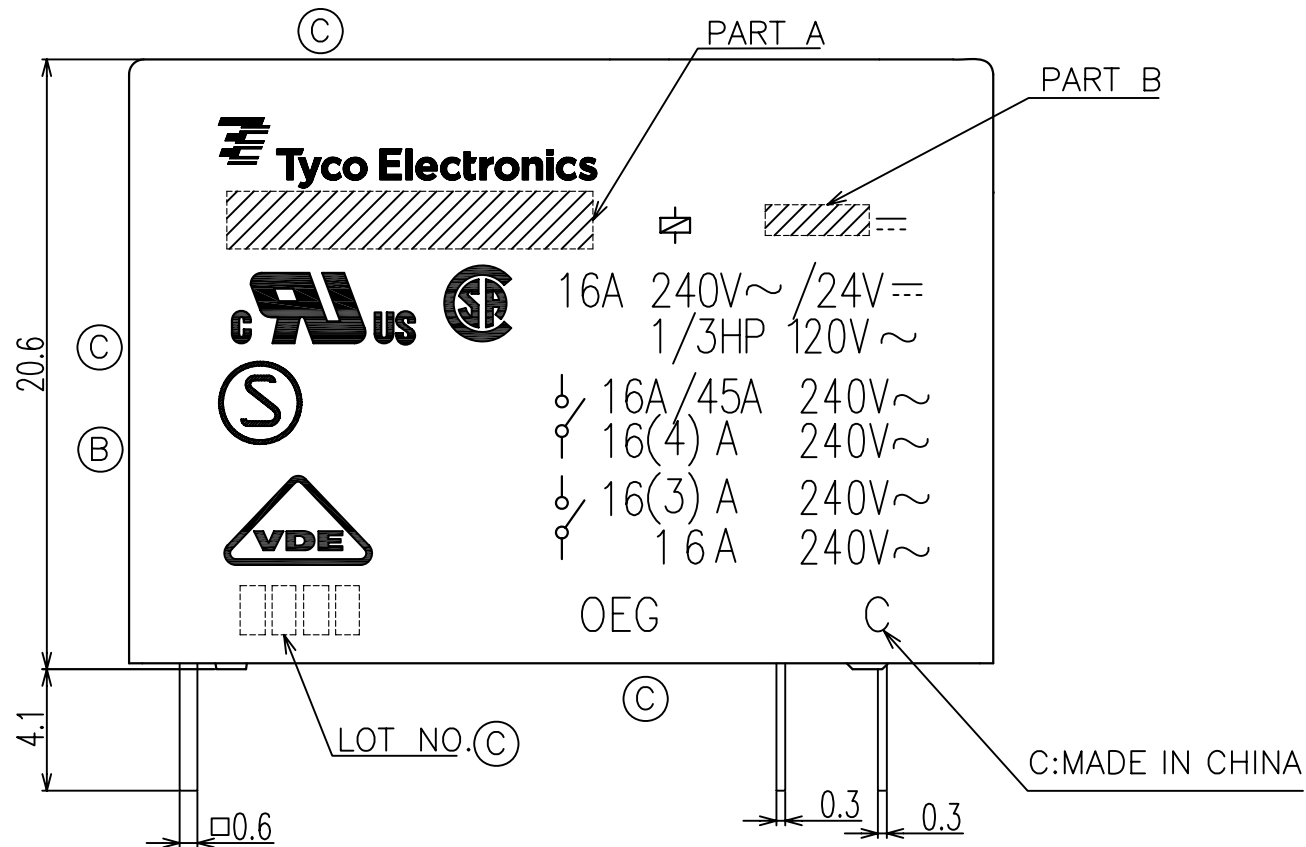
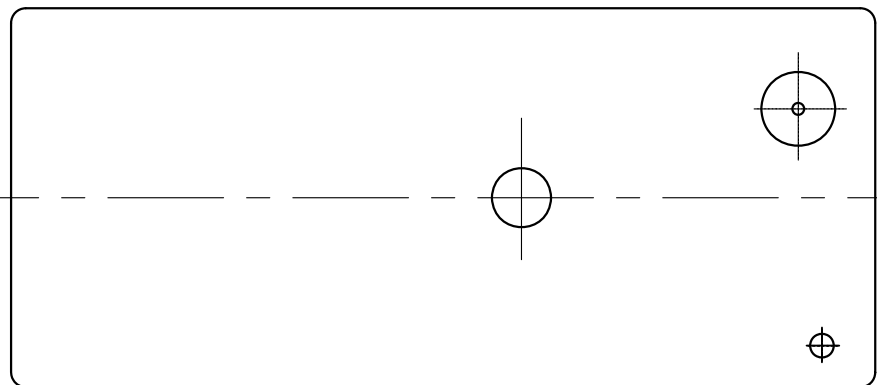
3

2

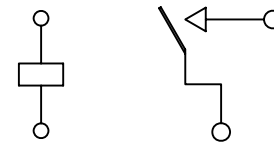
1

THIS DRAWING IS UNPUBLISHED. RELEASED FOR PUBLICATION
 © COPYRIGHT BY TYCO ELECTRONICS CORPORATION. ALL RIGHTS RESERVED.

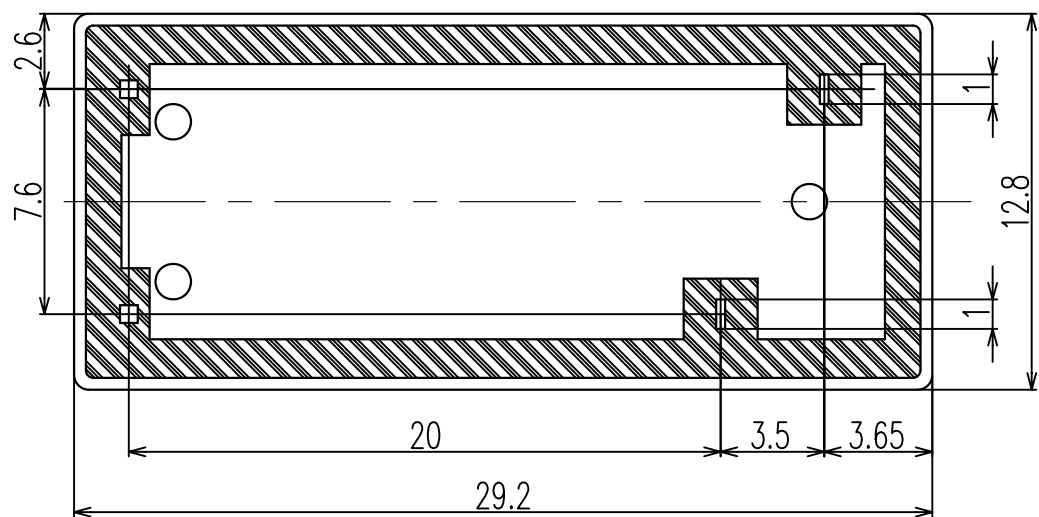
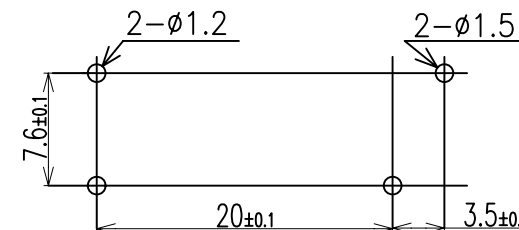
| LOC | DIST | REVISIONS | | | | | | |
|-----|------|-----------|-----|-----------------|---------------|-----------|------|------|
| | | P | LTR | DESCRIPTION | ECO | DATE | DWN | APVD |
| HB | — | | B | MARKING CHANGE | ECO-07-013869 | 25-MAY-07 | XN.Z | W.Y |
| | | | B1 | CORRECT MISTAKE | ECO-07-016165 | 16-JUL-07 | BC.T | W.Y |
| | | | C | CHANGE NEW LOGO | ECR-08-018190 | 21-FEB-09 | D.L | BH.Y |



CONNECTION DIAGRAM (BOTTOM VIEW)



DRILLING DIAGRAM(2/1) (BOTTOM VIEW)



| | | | | | | |
|--|--|------------------|------------|-----------|-------------|---------------|
| THIS DRAWING IS A CONTROLLED DOCUMENT. | | DWN | Y.Xiao | | | |
| DIMENSIONS: mm | | CHK | N.Funayama | | | |
| TOLERANCES UNLESS OTHERWISE SPECIFIED: | | APVD | CH.HSU | | | |
| 0 PLC ± | | PRODUCT SPEC | — | | | |
| 1 PLC ± | | APPLICATION SPEC | — | | | |
| 2 PLC ± | | WEIGHT | — | | | |
| 3 PLC ± | | CUSTOMER DRAWING | SIZE | CAGE CODE | DRAWING NO | RESTRICTED TO |
| 4 PLC ± | | | A3 | 00779 | 1-1461373-8 | — |
| ANGLES ± | | SCALE | SHEET | | REV | |
| FINISH | | 4:1 | 1 of 2 | | C | |

4

3

2

1

THIS DRAWING IS UNPUBLISHED. RELEASED FOR PUBLICATION
 © COPYRIGHT BY TYCO ELECTRONICS CORPORATION. ALL RIGHTS RESERVED.

| LOC | DIST | REVISIONS | | | | | |
|-----|------|-----------|-----|-------------|------|-----|------|
| | | P | LTR | DESCRIPTION | DATE | DWN | APVD |
| HB | - | | - | - | - | - | - |

NOTES:

1.LOT NO. SYSTEM AS FOLLOWING:

0 8 2 5
 WEEK
 YEAR

2.GENERAL TOLERANCE AS FOLLOWING:

| TOLERANCE | |
|------------|------|
| 0~0.99mm | ±0.1 |
| 1mm~2.99mm | ±0.2 |
| 3mm MIN. | ±0.3 |

3.TERMINAL DIMENSION IS NOT INCLUDING SOLDER TIP.

| | | | |
|---------------|------------------|---------------|--------|
| OMIH-SH-105LM | 5-1440009-4 | OMIH-SH-105LM | 5V |
| OMIH-SH-148LM | 0-1461373-4 | OMIH-SH-148LM | 48V |
| OMIH-SH-148DM | 2-1461373-0 | OMIH-SH-148DM | 48V |
| OMIH-SH-124LM | 1461373-3 (B1) | OMIH-SH-124LM | 24V |
| OMIH-SH-124DM | 1-1461373-9 | OMIH-SH-124DM | 24V |
| OMIH-SH-118LM | 1461373-2 | OMIH-SH-118LM | 18V |
| OMIH-SH-112LM | 7-1440000-1 | OMIH-SH-112LM | 12V |
| OMIH-SH-112DM | 1-1461373-8 | OMIH-SH-112DM | 12V |
| OMIH-SH-109LM | 6-1440000-8 | OMIH-SH-109LM | 9V |
| OMIH-SH-109DM | 1-1461373-7 | OMIH-SH-109DM | 9V |
| OMIH-SH-106LM | 0-1461373-1 | OMIH-SH-106LM | 6V |
| OMIH-SH-106DM | 1-1461373-6 | OMIH-SH-106DM | 6V |
| OMIH-SH-105LM | 6-1440000-7 | OMIH-SH-105LM | 5V |
| OMIH-SH-105DM | 1-1461373-5 (A1) | OMIH-SH-105DM | 5V |
| DESCRIPTION | TE PART NAME | PART A | PART B |

RELAY TYPE

| | | | | |
|------------------|------------|-------------|---------------------|------|
| | | UV RESIN | UV SEAL | 16 |
| | | EPOXY RESIN | SEAL | 15 |
| UL94 V-0 | | PBT | CASE | 14 |
| CLASS E | | UEW | MAGNETIC WIRE | 13 |
| UL94 V-0 | | PET | BASE | 12 |
| UL94 V-0 | | PBT | BOBBIN | 11 |
| | SOLDER DIP | CP WIRE | COIL TERMINAL | 10 |
| UL94 V-0 | | PPS | CARD | 9 |
| | | Ag ALLOY | MOVABLE CONTACT | 8 |
| | | Ag ALLOY | STATIONARY CONTACT | 7 |
| | | Cu ALLOY | HINGE SPRING | 6 |
| | SOLDER DIP | Cu ALLOY | STATIONARY TERMINAL | 5 |
| | SOLDER DIP | Cu ALLOY | MOVABLE SPRING | 4 |
| | | STEEL | CORE | 3 |
| | | STEEL | ARMATURE | 2 |
| | | STEEL | YOKE | 1 |
| INCOMBUSTIBILITY | TREATMENT | MATERIAL | DESCRIPTION | ITEM |

| | | | | | |
|--|--|--|------------|-------------|---------------|
| THIS DRAWING IS A CONTROLLED DOCUMENT. | | DWN | - | | |
| | | CHK | Y.Xiao | | |
| | | APVD | N.Funayama | | |
| | | PRODUCT SPEC | CH.HSU | | |
| | | APPLICATION SPEC | - | | |
| | | WEIGHT | - | | |
| | | CUSTOMER DRAWING | - | | |
| DIMENSIONS: mm | | Tyco Electronics Corporation ShenZhen | | | |
| TOLERANCES UNLESS OTHERWISE SPECIFIED: | | OMIH CUSTOMER DRAWING | | | |
| 0 PLC ± | | SIZE | CAGE CODE | DRAWING NO | RESTRICTED TO |
| 1 PLC ± | | A3 00779 | | 1-1461373-8 | - |
| 2 PLC ± | | | | | |
| 3 PLC ± | | | | | |
| 4 PLC ± | | | | | |
| ANGLES ± | | | | | |
| MATERIAL | | SCALE 4:1 SHEET 2 of 2 REV C | | | |
| FINISH | | | | | |