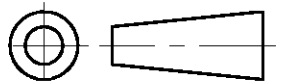


DO NOT SCALE

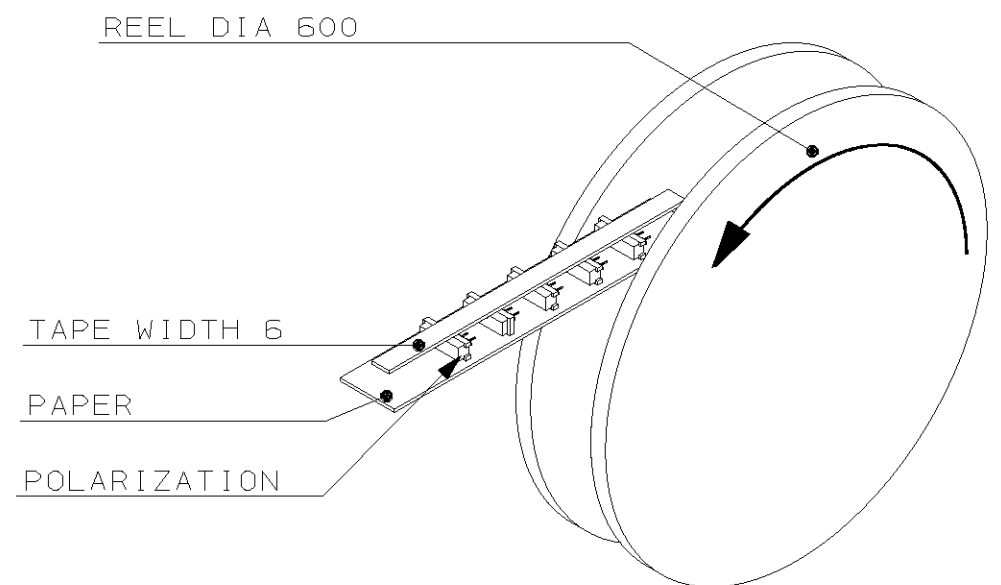
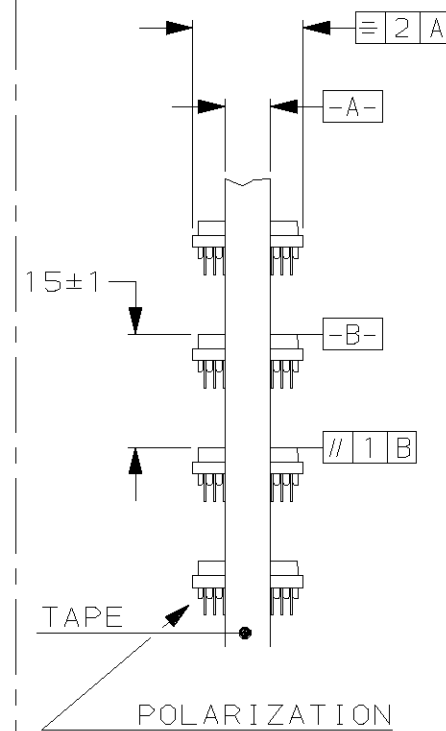
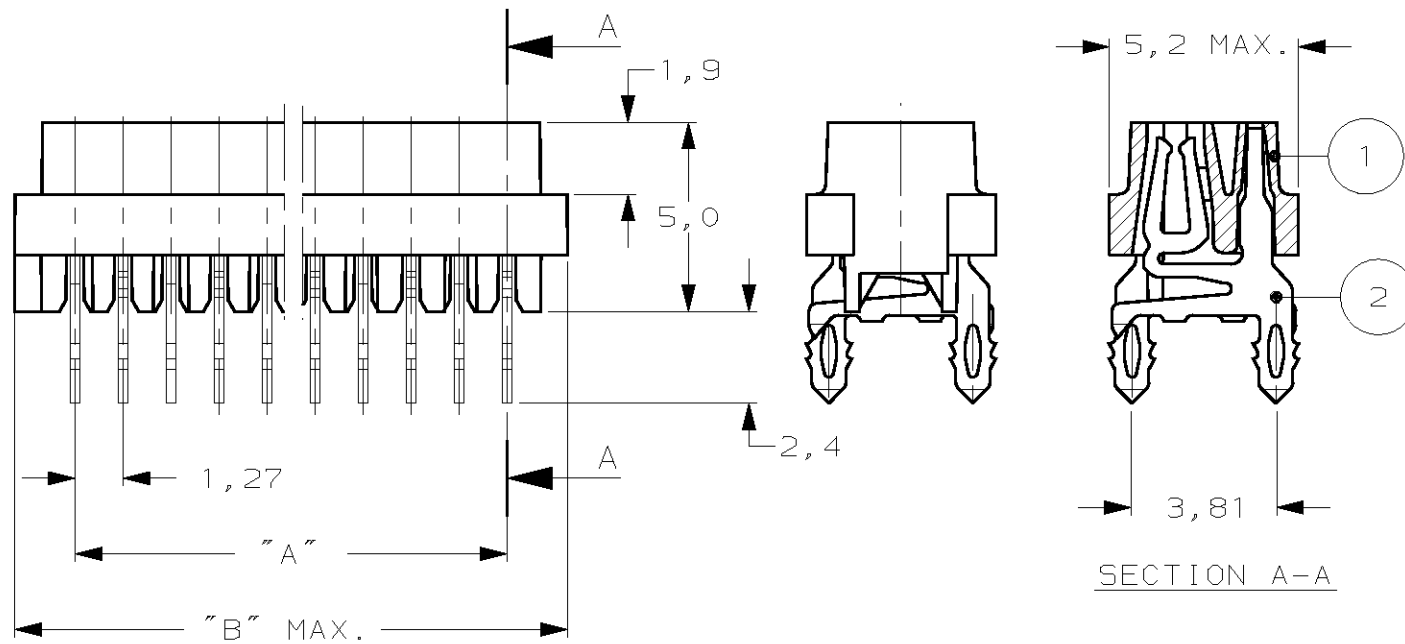
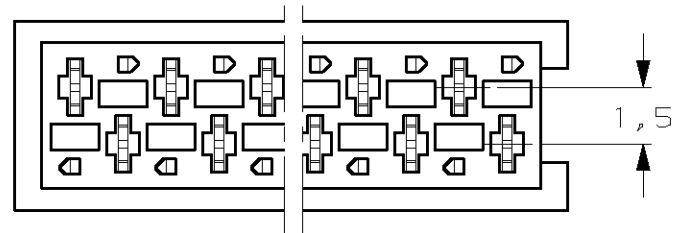
DIMENSIONS IN mm

METRIC

THIRD ANGLE
PROJECTION



PARTNUMBER REEL PACKAGING	NUMBER OF POSITIONS	"A"	"B" MAX.
0-100411-4	4	3,81	7,1
0-100411-6	6	6,35	9,7
0-100411-8	8	8,89	12,2
1-100411-0	10	11,43	14,7
1-100411-2	12	13,97	17,3
1-100411-4	14	16,51	19,8
1-100411-6	16	19,05	22,4
1-100411-8	18	21,59	24,9
2-100411-0	20	24,13	27,4



DEREELING DIRECTION AND POSITION OF CONNECTORS
2500 CONNECTORS PER REEL FOR ALL PARTNUMBERS

NOTES:

- HEIGHT OF CONNECTOR ABOVE P.C. BOARD SURFACE
AFTER INSERTION: 5,20±0,05
- FOR PC BOARD LAY-OUT SEE SHEET 2
- FINISH: TIN OVER NICKEL PLATING.
- PRODUCT SPECIFICATION: 108-19052.
- APPLICATION SPECIFICATION: 114-19027.

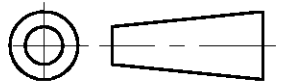
3	FEMALE CONTACT	PHOSPHOREBRONZE	2
	HOUSING	GLASS FILLED POLYESTER (RED)	1
	DESCRIPTION	MATERIAL	ITEM
	-	-	-
	-	-	-
F	EH01-0232-04	JvdH EL 16 FEB 04	CUSTOMER DRAWING FOR REFERENCE ONLY WILL NOT BE UPDATED © COPYRIGHT 19- BY AMP HOLLAND B.V. ALL INTERNATIONAL RIGHTS RESERVED. AMP PRODUCTS MAY BE COVERED BY U.S. AND FOREIGN AND/OR PATENTS PENDING. THIS DRAWING IS UNPUBLISHED RELEASED FOR PUBLICATION , 19
E	EH-1807-99	RvH M.G. 15 DEC 99	
D	EH-0615-97	D.K. M.G. 12 JUN 97	
C	H-9920	H.S. H.S. 01.07.92	
B	H-9805	H.S. H.S. 12.05.92	
LTR.	REVISION RECORD	DR. CHK. DATE	
DR.:	P V TONGEREN	CHK.:	H KOKKEN
DATE:	11-07-91	DATE:	11-07-91
APP.:	-	DATE:	-
DWG.No.	C-100411	REV.LTR.	F
SHEET	1 OF 3		A3

DO NOT SCALE

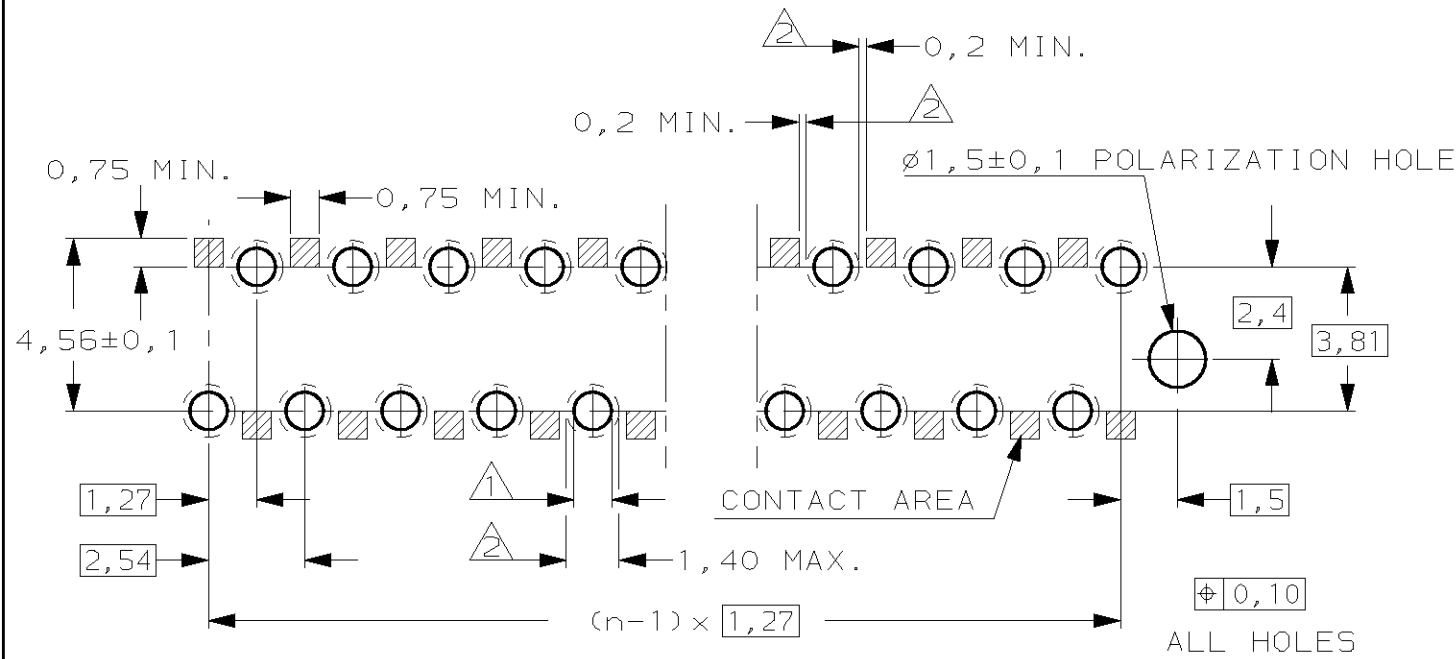
DIMENSIONS IN mm

METRIC

THIRD ANGLE
PROJECTION



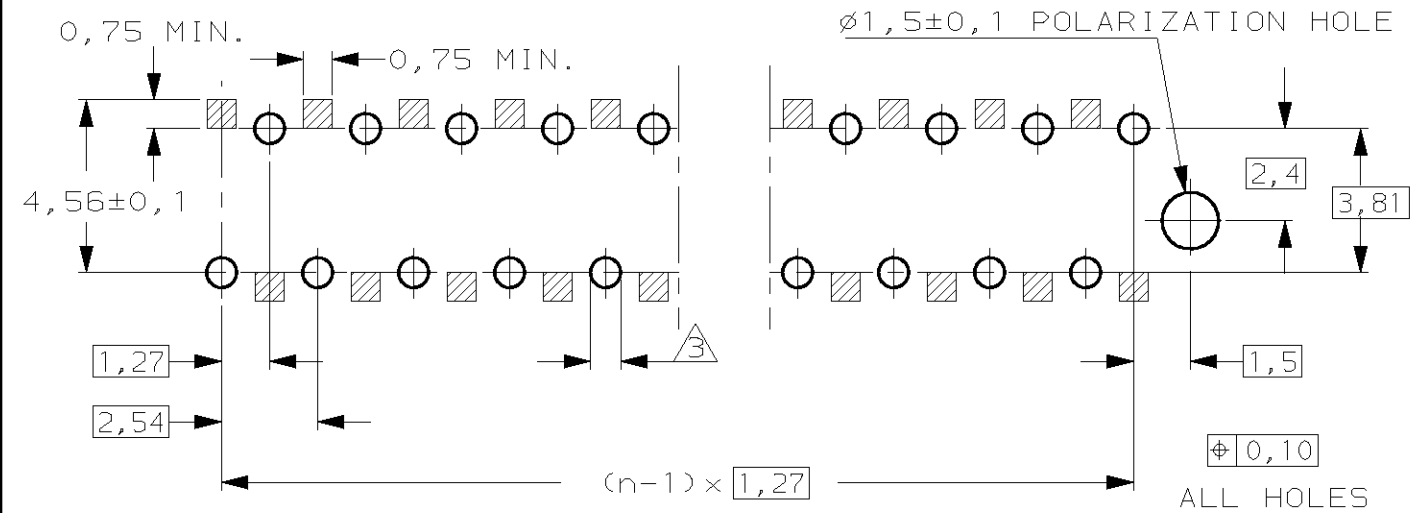
RECOMMENDED PC BOARD LAY-OUT (SOLDERSIDE SHOWN)



EPOXY PC BOARDS WITH PLATED OR UNPLATED DRILLED HOLES

1 EPOXY PC BOARD WITH UNPLATED DRILLED HOLES 1,00±0,05mm.
FOR PLATED HOLES: SEE TABLE 1

2 EPOXY PC BOARDS WITH PLATED DRILLED HOLES, SOLDER EYE
1,40 MAX. TO ACHIEVE A CREEPAGE DISTANCE BETWEEN SOLDER
EYE AND CONTACT AREA CONNECTOR OF MIN. 0,20mm.



PAPER PHENOLIC PC BOARDS WITH PUNCHED HOLES

3 HOLE DIAMETER 0,80^{+0,15}₋₀

TABLE 1

P.C.B. HOLE DIM. PLATED	
FIN. HOLE	:0,95 TO 1,05 mm
Cu-thks	:0,025 TO 0,050 mm
SnPb-thks	:0,004 TO 0,010 mm

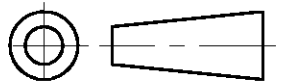
-				CUSTOMER DRAWING		FOR REFERENCE ONLY WILL NOT BE UPDATED	
-				© COPYRIGHT 19- BY AMP HOLLAND B.V.		ALL INTERNATIONAL RIGHTS RESERVED. AMP PRODUCTS MAY BE COVERED BY U.S. AND FOREIGN AND/OR PATENTS PENDING.	
-				THIS DRAWING IS UNPUBLISHED		RELEASED FOR PUBLICATION	
-				AMP		AMP HOLLAND B.V. 's-Hertogenbosch, The Netherlands.	
-				NAME		Micro-MaTch FEMALE S.M.C. CONNECTOR	
LTR.	REVISION RECORD	DR.	CHK.	DATE			
DR.:	P V TONGEREN	CHK.:	H KOKKEN	APP.:	-	DWG.No.	C-100411
DATE:	11-07-91	DATE:	11-07-91	DATE:	-	REV.LTR.	F
						SHEET	2 OF 3
						A3	

DO NOT SCALE

DIMENSIONS IN mm

METRIC

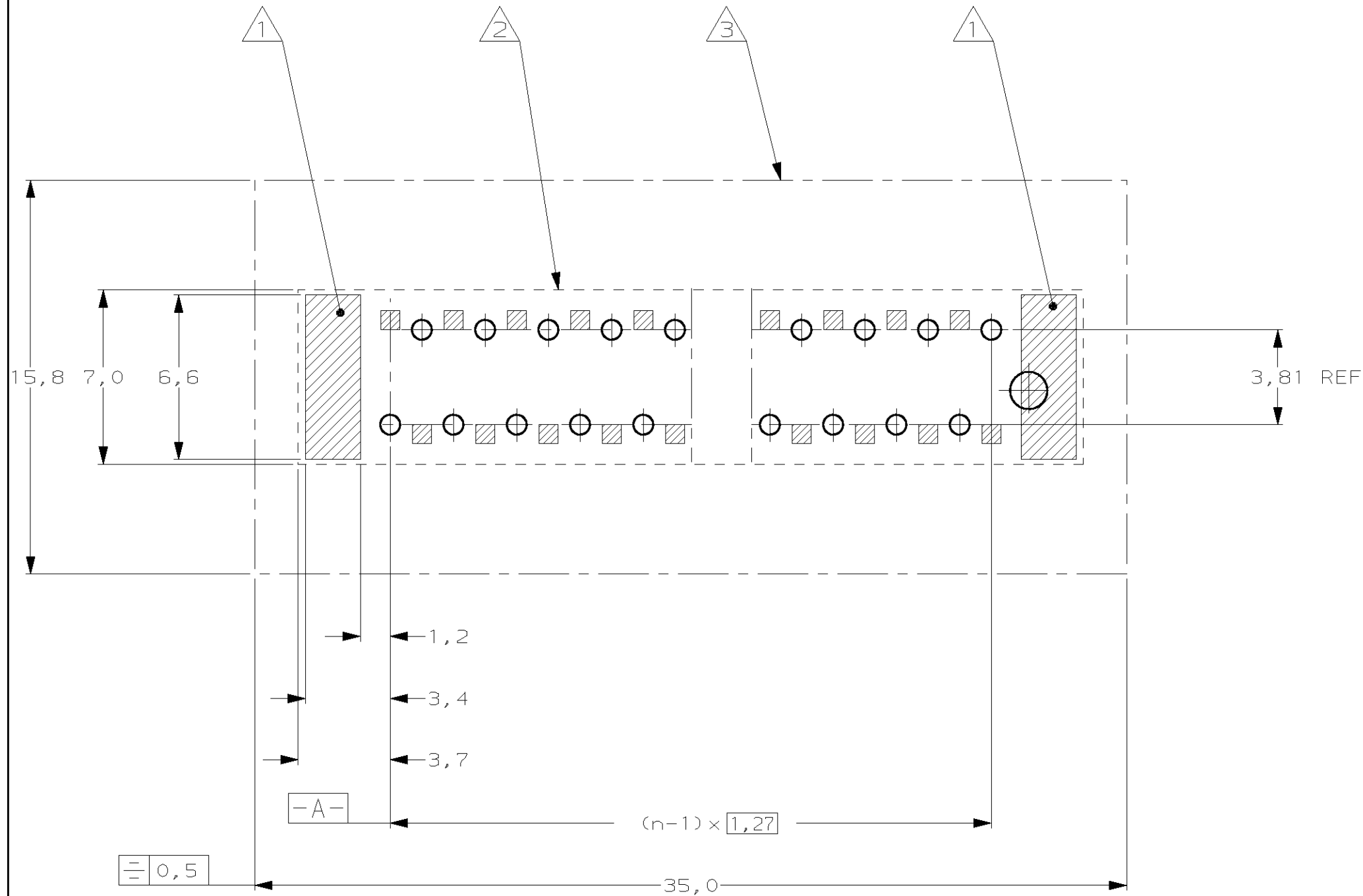
THIRD ANGLE
PROJECTION



P.C.B. LAYOUT RECOMENDATIONS
TOOLING AREAS

NOTES:

- ① SHADED AREAS FREE OF (TINNED) COPPER TRACKS ON P.C.B.
- ② AREAS WITHIN THE DOTTED LINE FREE OF P.C.B. COMPONENTS, TOP AND BACK SIDE OF THE P.C.B.
- ③ AREA WITHIN THIS LINE FREE OF COMPONENTS HIGHER THAN 14 mm



			FINISH			MATERIAL			PARTNUMBER				
-	-	-	-	-	-	CUSTOMER DRAWING			FOR REFERENCE ONLY WILL NOT BE UPDATED				
-	-	-	-	-	-	© COPYRIGHT 19- BY AMP HOLLAND B.V. ALL INTERNATIONAL RIGHTS RESERVED. AMP PRODUCTS MAY BE COVERED BY U.S. AND FOREIGN AND/OR PATENTS PENDING.							
-	-	-	-	-	-	THIS DRAWING IS UNPUBLISHED RELEASED FOR PUBLICATION , 19							
-	-	-	-	-	-	AMP			AMP HOLLAND B.V. 's-Hertogenbosch, The Netherlands.				
-	-	-	-	-	-	NAME							
-	-	-	-	-	-	TOOLING AREAS							
-	-	-	-	-	-	Micro-maTch FEMALE S.M.C. CONNECTOR							
LTR.	REVISION RECORD			DR.	CHK.	DATE	DWG.No.			REV.LTR.	SHEET		
DR.:	H.vd STEEN			CHK.:	H.vd STEEN		APP.:	-			DWG.No.	C-100411	
DATE:	12.05.92			DATE:	12.05.92		DATE:	-			REV.LTR.	F	
											SHEET	3 OF 3	
												A3	