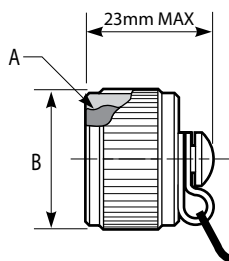
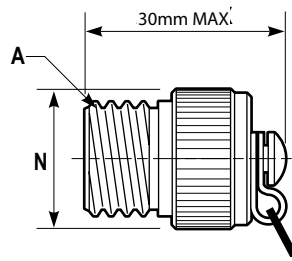


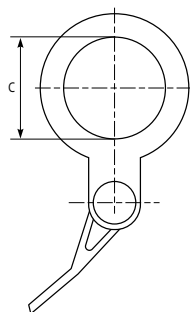
## PROTECTION CAPS



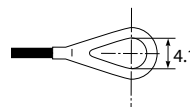
Protection cap for receptacles equipped with metallic chain, nylon cord or stainless steel rope



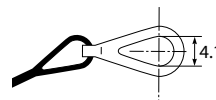
Protection cap for plugs equipped with metallic chain, nylon cord or stainless steel rope



Termination of the chain, rope (RO type) or cord for jam nut receptacle protection caps

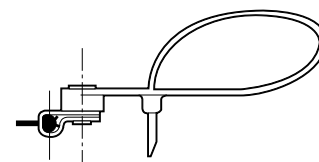


Termination of the cord or rope (R type) for square flange receptacle protection caps



Termination of the chain for square flange receptacle and plug protection caps

Termination of the cord for plugs protection caps



Cap type	Metallic chain length (mm)	Nylon cord length (mm)	Stainless steel rope length (mm)
BEC/BER for receptacle	152	105	127
BF for plug	127	160	127

Shell size		A thread 0.1P-0.3L-TS Class 2B (inches)	B Dia Max (mm)	C Dia Min (mm)	N Dia Max (mm)
MIL-DTL-38999 Series III	Amphenol				
A	9	.6250	22.23	17.86	22.73
B	11	.7500	25.40	21.44	25.40
C	13	.8750	28.58	25.81	29.74
D	15	1.0000	31.75	28.98	32.99
E	17	1.1875	36.53	32.16	36.47
F	19	1.2500	38.10	35.33	39.19
G	21	1.3750	41.28	38.51	42.42
H	23	1.5000	44.45	41.68	45.39
J	25	1.6250	47.63	44.86	48.62

### ORDERING INFORMATION

Cap Series	B	EC	N	TV	W	15
<b>Protection cap type</b>						
EC: For square flange receptacle						
ER: For jam nut receptacle						
F: For plug						
<b>Wire type</b>						
N: Nylon cord						
Blank for metallic chain						
R: Jacketed stainless steel rope						
RO: Jacketed stainless steel rope with washer end (only for plug)						
<b>Connector type</b>						
<b>Finish</b>						
B: Bronze						
F: Electroless nickel plated, aluminium version						
W: Olive drab cadmium plated aluminium version						
Z: Green zinc cobalt plated aluminium						
ZN: Black zinc Nickel aluminium from Amphenol Europe						
<b>Corresponding connector shell size:</b>						
09/11/13/15/17/19/21/23/25						



For stainless steel caps, please consult us