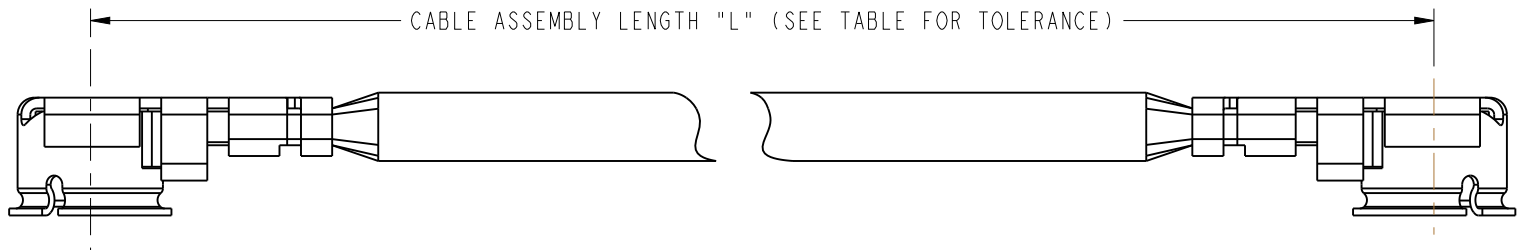


CONNECTOR BODY: PHOSPHOR BRONZE, SILVER PLATED (.08u MIN.) OVER COPPER (1-2u)
CONNECTOR CENTER CONTACT: PHOSPHOR BRONZE, GOLD PLATED (0.2u MIN.) OVER NICKEL (2-3u)
CONNECTOR INSULATOR: PBT
CABLE JACKET: FEP
CABLE DIELECTRIC: FEP
CABLE CENTER CONDUCTOR: ANNEALED COPPER WIRE STRANDED, SILVER PLATED
CABLE OUTER CONDUCTOR: ANNEALED COPPER WIRE BRAID, SILVER PLATED

CABLE ASSEMBLY OVERALL LENGTH TOLERANCE	
OVERALL LENGTH L (mm)	STANDARD TOLERANCE (mm)
35<L<200	± 4
200 < L 500	± 8
500 < L 1000	± 12
1000 < L	±1.5 %



A - 1 P A - 1 3 7 - X X X X Y Z

SERIES NAME (A=AMC)

AMC RIGHT ANGLE PLUG

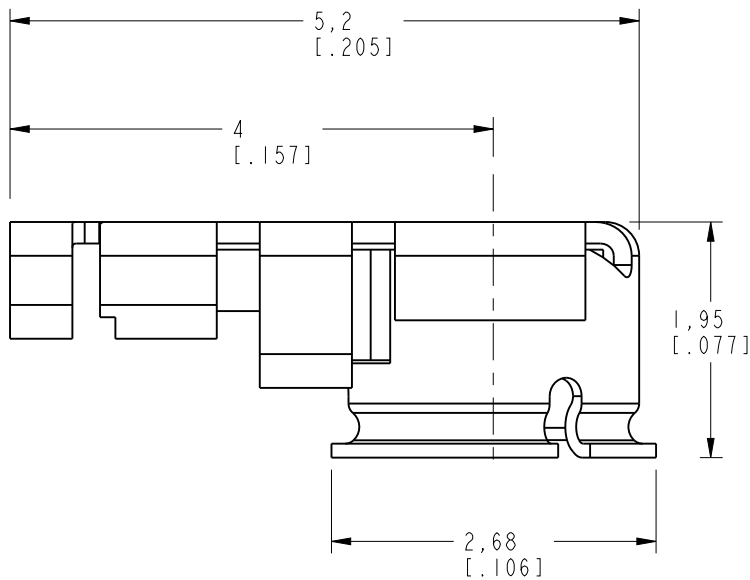
ROTATION: C = 90° (CLOCKWISE)
F = 180°
- = 0°

CABLE DIAMETER IN mm (137 = 1.37 mm)

CABLE ASSEMBLY LENGTH IN mm
(SHORTEST LENGTH IS 35mm)

CABLE COLOR: G=GRAY
B=BLACK
W=WHITE

NO. OF TERMINATED ENDS (1 OR 2)



AMC RIGHT ANGLE PLUG

UNLESS OTHERWISE SPECIFIED, DIMENSIONS ARE IN INCHES AND TOLERANCES ARE: 2 PLACE DECIMAL 3 PLACE DECIMAL ANGLES ±.015 (0.381 mm) ±.005 (0.127 mm) ± 1°			MATERIAL	DRAWN		DATE		TITLE AMC PLUG TO AMC PLUG JUMPER ASSEMBLY			Amphenol RF Danbury, CT, USA Tainan, Taiwan Shenzhen, China www.amphenolrf.com		
NOTICE - These drawings, specifications, or other data (1) are, and remain the property of Amphenol Corp. (2) must be returned upon request; and (3) are confidential and not to be disclosed to any person other than those to whom they are given by Amphenol Corp. The furnishing of these drawings, specifications, or other data by Amphenol Corp., or to any other person to anyone for any purpose is not to be regarded by implication or otherwise in any manner licensing, granting rights or permitting such holder or any other person to manufacture, use or sell any product, process or design, patented or otherwise, that may in any way be related to or disclosed by said drawings, specifications, or other data.				B.C. GLEISSNER		16-Jan-04							
				ENGINEER		DATE							
				B.C. GLEISSNER		16-Jan-04							
			REFERENCE	APPROVED		DATE		SCALE: 8.0:1			SHEET 1 OF 1		
				O. BARTHELMES		2/23/05							
				CAD FILE		CODE ID							
EAR# 1152 GEN# CASSY68				I:\AMC\A-IPA-137-XXXXZ			74868		DWG SIZE	B	DRAWING NO. A-IPA-137-XXXXZ		REV C