

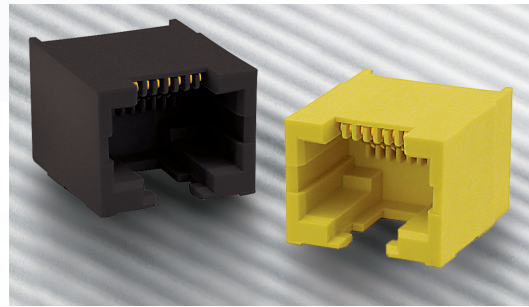
RJLSE Series

ULTRA LOW PROFILE - SMT SERIES

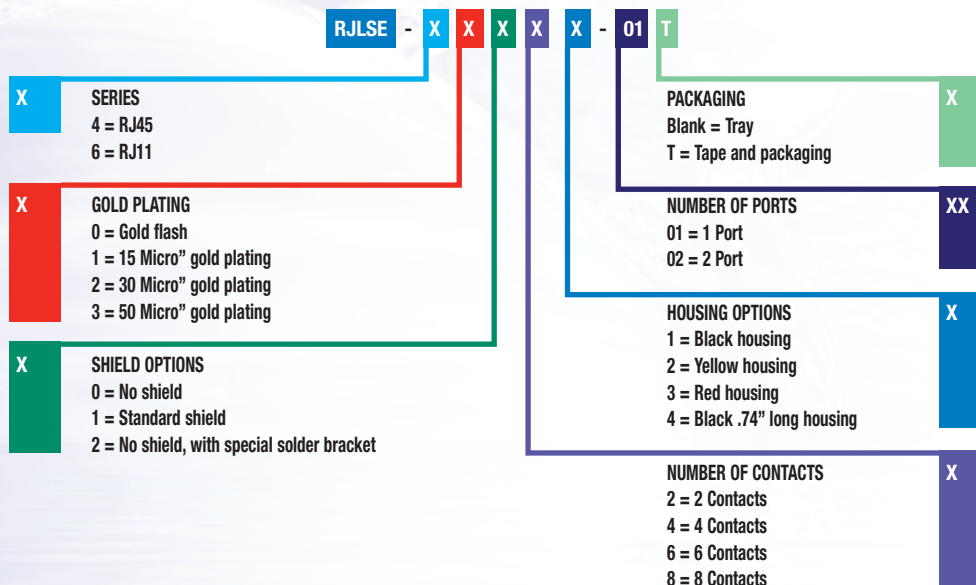
Material Specifications

Housing:	High temperature engineering thermoplastic, flammability rating UL 94V-0 *RoHS compliant
Contacts:	Phosphor bronze
Plating:	Gold plated on mating surfaces over 50µ" (1.27 microns) min. nickel underplate. 100µ" (2.54 microns) min. matte tin on contact tails.
Shield:	Copper alloy, nickel plated
Coplanarity:	The maximum gap between all terminal tails is .004" (0.10mm).

*Please visit www.amphenolcanada.com (ECO-RoHS section) for further information on RoHS products.

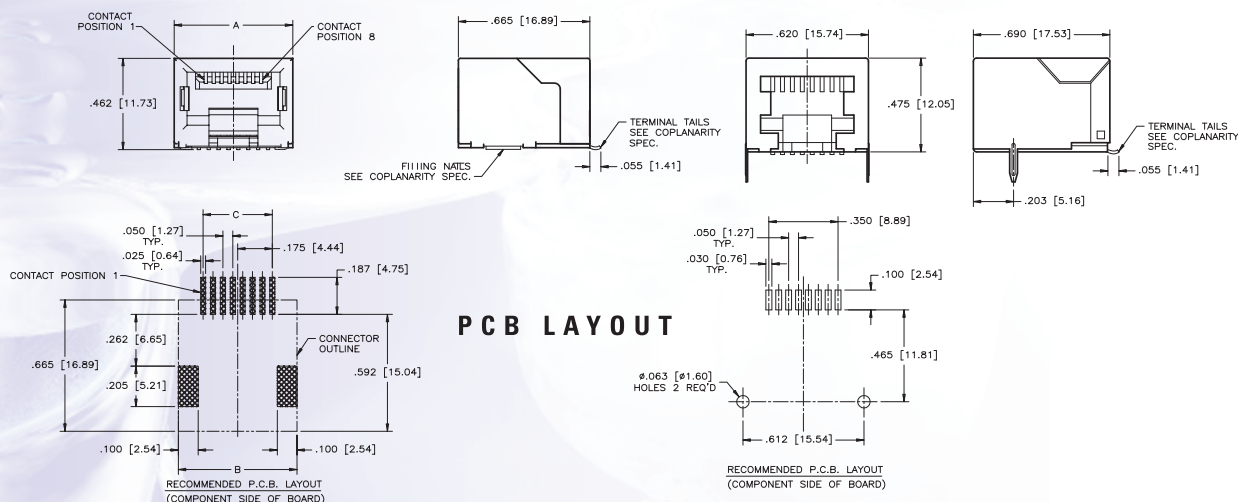


Ordering Information



NON-SHIELDED

SHIELDED



Number of positions	Unshielded A	Shielded A	Shielded B	C	D
6	.520 [13.21]	.540 [13.71]	.532 [13.51]	.520 [13.21]	.250 [6.35]
8	.600 [15.24]	.620 [15.74]	.612 [15.64]	.600 [15.24]	.350 [8.89]