

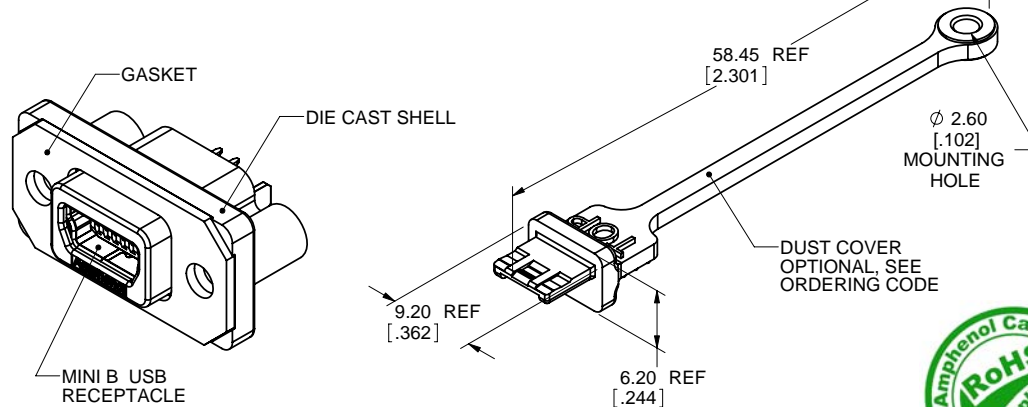
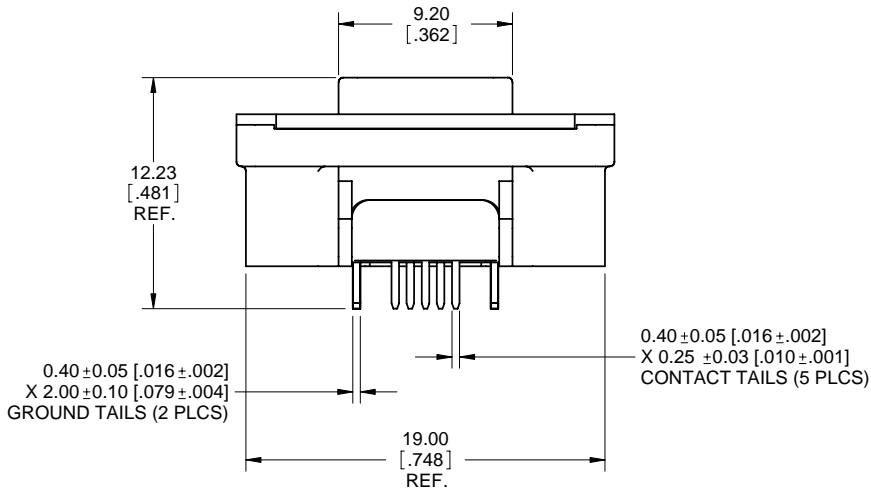
ORDERING CODE: **M U S B - B 5 5 1 - X X**

SERIES, RUGGED USB

USB 'MINI-B' RECEPTACLE, SINGLE PORT, VERTICAL PCB TAILS

THREAD OPTION
0 = #2-56 UNC THREAD
N = M2.5 X 0.45 THREAD

DUST COVER OPTION
0 = NO DUST COVER SUPPLIED
1 = WITH GREY DUST COVER SUPPLIED
4 = NO DUST COVER SUPPLIED
5 = WITH BLACK DUST COVER SUPPLIED
NOTE: THERE IS NO DIFFERENCE BETWEEN DUST COVER OPTIONS '0' AND '4'



NOTES:

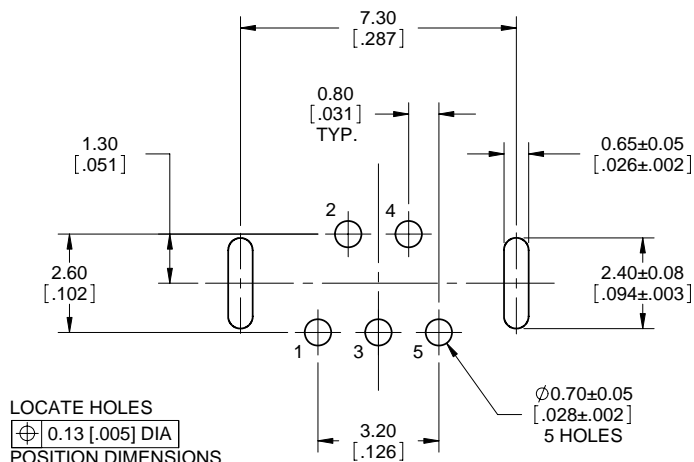
- MATERIAL:
ALL MATERIALS ARE RoHS COMPLIANT PER EU DIRECTIVE 2002/95/EC AND AMENDMENTS
 - OUTER SHELL: DIE CAST ZINC ALLOY, NICKEL PLATED
 - CONTACTS: PHOSPHOR BRONZE, PLATED WITH 0.76 MICRONS [30u"] GOLD OVER 1.27 MICRONS [50u"] MINIMUM NICKEL ON THE MATING AREA WITH GOLD FLASH OVER NICKEL ON THE TAILS.
 - USB HOUSING: ENGINEERING THERMOPLASTIC, FLAMMABILITY RATING UL94V-0, BLACK.
 - USB SHELL: COPPER ALLOY, NICKEL PLATED
 - GASKET: PORON WITH ADHESIVE BACKING.
 - DUST COVER: SILICONE RUBBER WITH NICKEL PLATED COPPER ALLOY BUSHING.
- ENVIRONMENTAL PERFORMANCE PER IEC 60529 CODE IP67 FOR SEAL BETWEEN MATING AREA AND PCB SIDE OF CONNECTOR. GASKET PROVIDES SEAL TO INSIDE FACE OF ENCLOSURE PANEL. AVAILABLE DUST COVER PROVIDES ADDED PROTECTION.
- CURRENT RATING: 1 AMPERE.
- CONTACT RESISTANCE: 50 MILLIOHMS MAXIMUM.
- OPERATING TEMPERATURE: -40°C TO +105°C.
- DUST COVERS MAY BE ORDERED SEPARATELY. SPECIFY
 - MUSB-2E151-005BP FOR GREY DUST COVER
 - MUSB-2E151-015BP FOR BLACK DUST COVER
 SEE PAGE 2 FOR APPLICATION VIEW.
- CONNECTOR SEAL TO WITHSTAND 34.5 KPa (5 PSI) PRESSURE AFTER TEMPERATURE EXPOSURE OF 150°C FOR 180 SECONDS (CONNECTOR PRE-HEAT) AND 265°C FOR 8 SECONDS (SOLDER DIP TAILS).
- RECOMMENDED TORQUE FOR PANEL MOUNT SCREWS: 0.23 TO 0.34 Nm (2.00 TO 3.00 IN-LBS) FOR STEEL SCREWS WITH 3.00 (.118) THREAD ENGAGEMENT.

REVISIONS			
REV	ECN, ERN NO.	DATE	APPRD.
F	PRODUCT DWG (EAR 13525)	MAY04/09	K.L.

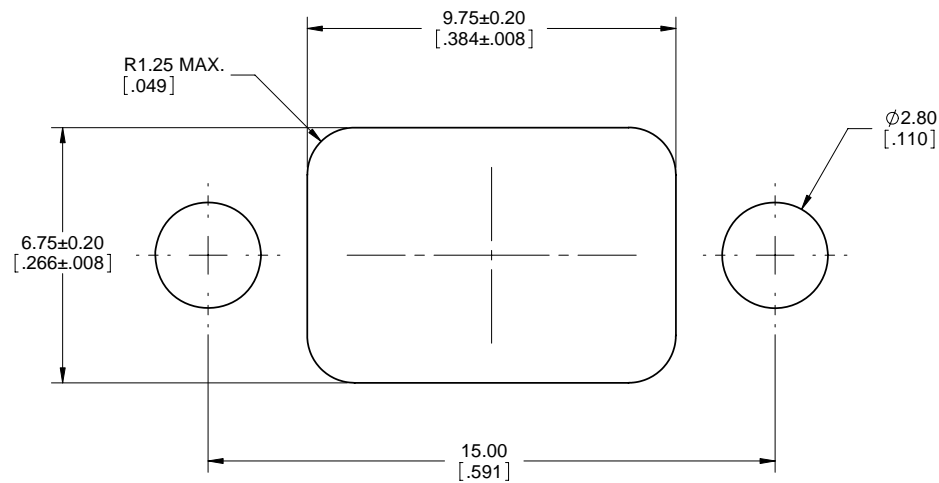
UNLESS OTHERWISE SPECIFIED DIMENSIONS ARE IN MILLIMETERS TOLERANCES ARE:		APPROVALS	DATE	Amphenol Canada Corp. TITLE MUSB SERIES RUGGED MINI-B USB RECEPTACLE, VERTICAL PCB MOUNT, METAL SHELL, RoHS COMPLIANT	
DECIMALS	ANGLES	DRAWN S.SEMENOV	FEB23/07		
.XX ± 0.15		DESIGNED S.SEMENOV	FEB23/07		
		CHECKED			
MATERIAL AND FINISH		QA APP'D		SIZE C	DWG. NO. P-MUSB-B551-XX
REF. EAR 13430		IE APP'D		SCALE 5:1	PROJECT MUSB
CODE IDENT. NO.		DWG APP'D A.GREEN	FEB23/07		SHEET 1 OF 2



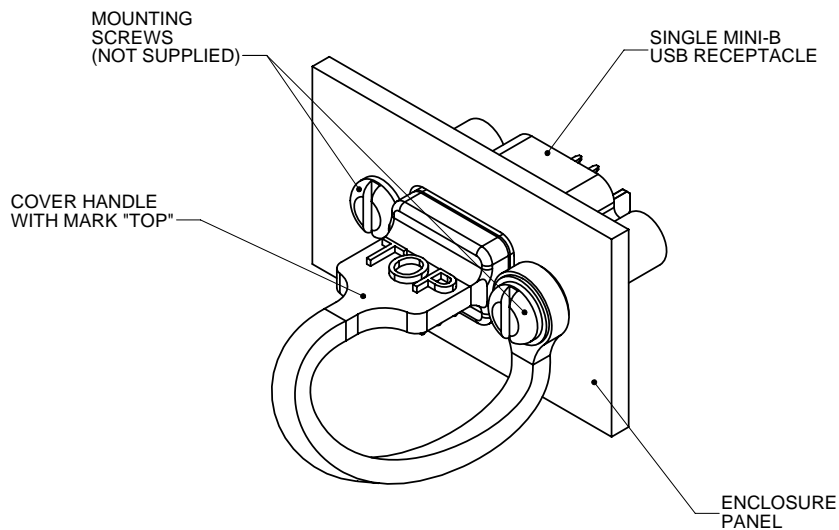
REVISIONS			
REV	ECN, ERN NO.	DATE	APPRD.
F	PRODUCT DWG (EAR 13525)	MAY04/09	K.L.



RECOMMENDED P.C.B. LAYOUT
COMPONENT SIDE OF BOARD
SCALE 10:1



RECOMMENDED PANEL CUTOUT
SCALE 10:1



DUST COVER APPLICATION



UNLESS OTHERWISE SPECIFIED DIMENSIONS ARE IN MILLIMETERS TOLERANCES ARE: DECIMALS ANGLES .XX ± 0.15		APPROVALS	DATE	Amphenol Canada Corp.		
		DRAWN S.SEMENOV	FEB23/07			
		DESIGNED S.SEMENOV	FEB23/07	TITLE MUSB SERIES RUGGED MINI-B USB RECEPTACLE, VERTICAL PCB MOUNT, METAL SHELL, RoHS COMPLIANT		
		CHECKED				
MATERIAL AND FINISH		QA APP'D		SIZE	DWG. NO.	REV.
		IE APP'D		C	P-MUSB-B551-XX	F
REF.	EAR 13430	DWG APP'D		SCALE	PROJECT	SHEET
CODE IDENT. NO.		A.GREEN	FEB23/07	5:1	MUSB	2 OF 2