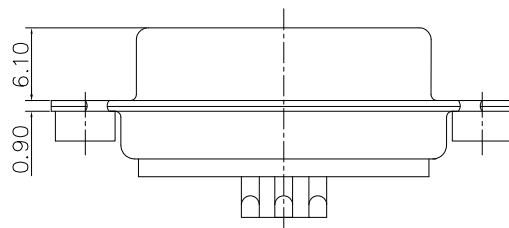
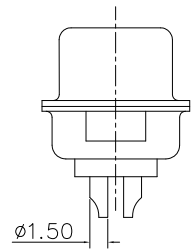
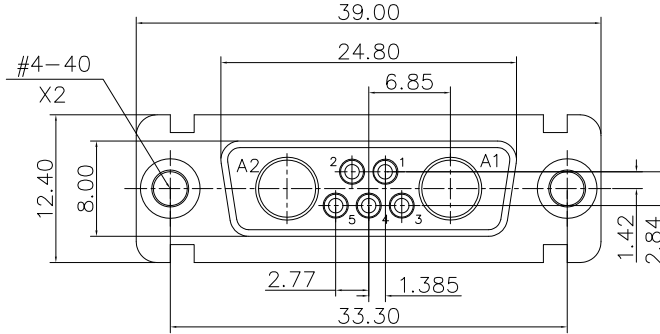


This document is the property of Amphenol Corporation and is delivered on the express condition that it is not to be disclosed, reproduced or used, in whole or in part, for manufacture or sale by anyone other than Amphenol Corporation without its prior consent, & that no right is granted to disclose or to use any information in this document.



Customer drawing

REVISIONS				
SYM	ECN	DESCRIPTION	DATE	APPROVED
1			04/01/08	

**D-SUB TECHNICAL DATA**

SHELL : Steel 2.5um(100u") min tin over 1.25um(50u") min nickel  
 BODY : Glass filled thermoplastic.  
 Flame retardant to UL94 V-0 Color Black  
 CONTACTS : Brass  
 0.75um(30u") min gold over 1.25um(50u") min nickel  
 REAR NUT : Brass, 100u" min tin over 50u" min nickel  
 ELECTRICAL : Voltage rating 300 V RMS at 50 Hz  
 Withstanding Voltage >1000 V RMS at 50 Hz for one minute  
 Insulation resistance >5000 M Ohms  
 CLIMATIC : Temperature range -55 °C up to 155°C  
 MARKING : Amphenol...(Series No.)  
 Commercial reference  
 Manufacturing date

**PRODUCT CODE**

**L 177TW A 7W2 S 4R**

L: RoHS Compliance

177TW: tin plated shell

Shell Size :A

4R=4-40 rear nut

Contact type:  
S:Female

Configuration: 7W2

UNLESS OTHERWISE SPECIFIED TOLERANCES		APPROVAL	DATE
U.S.	METRIC	DRAWN	CHECKED
.X +/-	0.50	Christina.out	04/01/08
.XX +/-	0.30	Lik.wang	04/01/08
.XXX +/-	0.20		
FRACTIONS +/-			
ANGLES +/-	2°		
FOR MATERIALS AND FINISHES SEE NOTES		DRAWING FILE :	
REMOVE SHARP EDGES		ANGLE OF PROJECTION	
DIMENSIONS			
U.S.	INCHES		
METRIC	MM		

<p><b>Amphenol</b></p> <p>TITLE Hybrid connector, TW series</p>		
SIZE	DRAWING NO.	REV.
A4	C L177TWA7W2S4R	1
SCALE	NONE	SHEET 1 OF 1