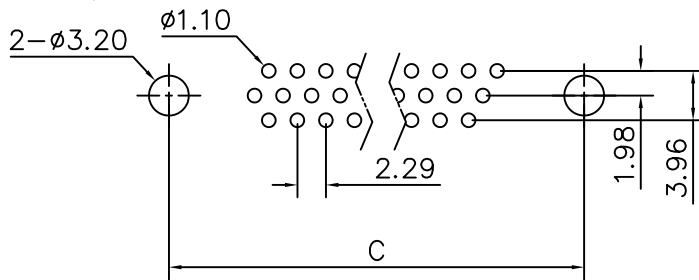
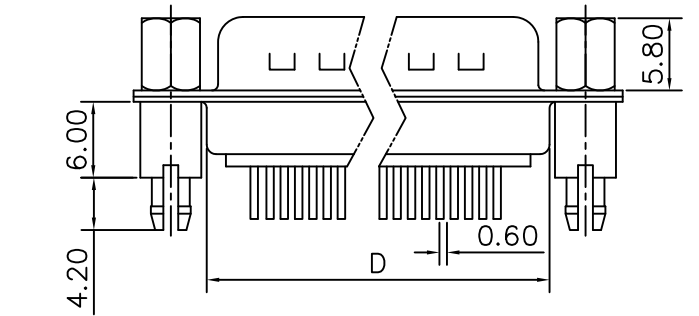
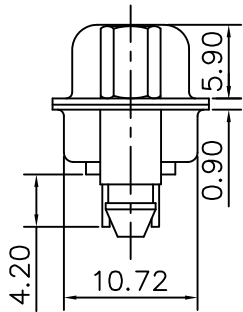
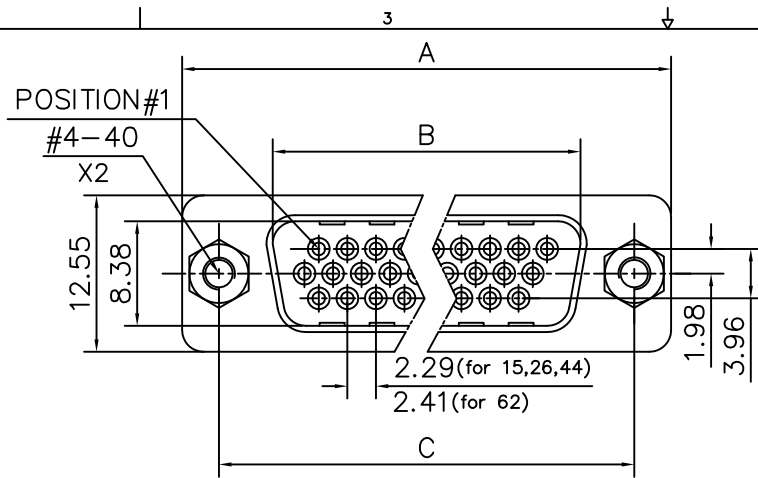


This document is the property of Amphenol Corporation and is delivered on the express condition that it is not to be disclosed, reproduced or used, in whole or in part, for manufacture or sale by anyone other than Amphenol Corporation without its prior consent, & that no right is granted to disclose or to use any information in this document.



RECOMMENDED P.C.B LAYOUT
(TOLERANCE +/-0.03)



DIM.S	SHELL	A	B	C	D
15		30.84	16.92	24.99	19.28
26		39.24	24.70	33.32	27.51
44		53.04	38.96	47.04	41.30
62		69.32	55.42	63.50	57.71

Customer drawing

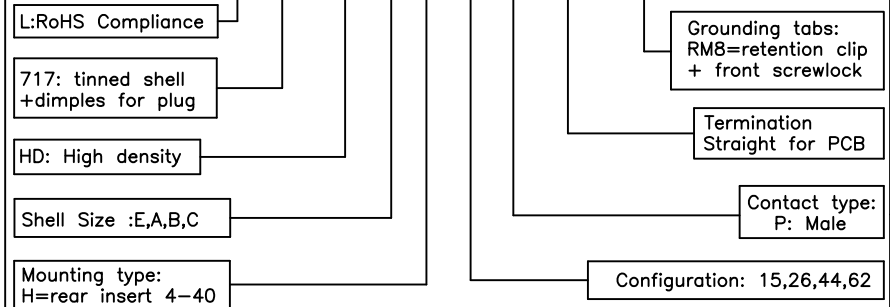
REVISIONS				
SYM	ECN	DESCRIPTION	DATE	APPROVED
A			04/14/08	

D-SUB TECHNICAL DATA

SHELL : Steel, 2.5um (100u") min tin over 1.25um (50u") min nickel
 BODY : Glass filled thermoplastic.
 Flame retardant to UL94 V-0 Color Black
 CONTACTS : Brass
 Gold flash over 50u" min. nickel on mating area
 100u" min. tin over 50u" min. nickel on solder area
 BOARDLOCK : Brass. 100u" min tin over 50u" min nickel
 SCREWLOCK: Brass. 50u" min nickel
 ELECTRICAL : Voltage rating : 1000 V RMS at 50 Hz
 Current rating 3A.
 Insulation resistance >1000 M Ohms
 Contact resistance 20 mOhms max.
 CLIMATIC : Temperature range -55 °C up to 125°C
 MARKING : Amphenol...(Series No.)
 Commercial reference
 Manufacturing date

PRODUCT CODE

L 717 HD X H XX P OL2 RM8



UNLESS OTHERWISE SPECIFIED TOLERANCES		APPROVAL	DATE
U.S.	METRIC	DRAWN	DATE
.X +/-	0.50	Christina.ou	04/14/08
.XX +/-	0.30	Checked	04/14/08
.XXX +/-	0.20	Checked	
FRACTIONS +/-			
ANGLES +/-	2'		
FOR MATERIALS AND FINISHES SEE NOTES		DRAWING FILE :	
REMOVE SHARP EDGES		ANGLE OF PROJECTION	
DIMENSIONS			
U.S.	INCHES		
METRIC	MM		

Amphenol®

TITLE
stamped and formed connector, HD series

SIZE	DRAWING NO.	REV.
A4	C L717HDXHXXPOL2RM8	1
SCALE	NONE	SHEET 1 OF 1