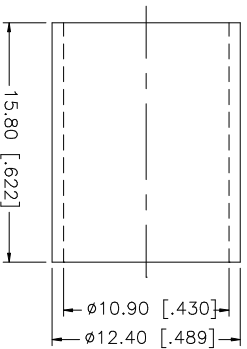
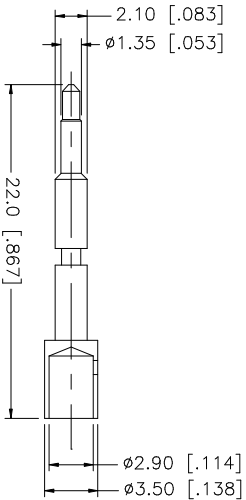
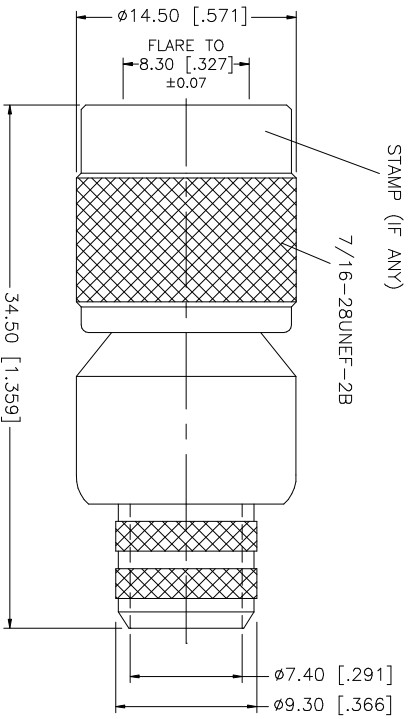
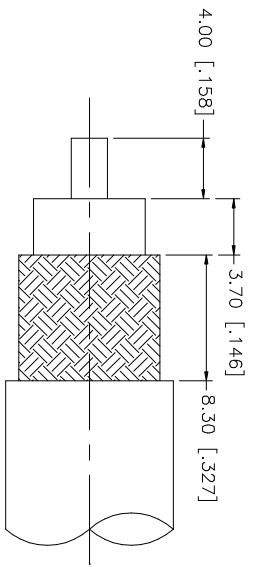


REV.	DATE	DESCRIPTION
A	01/15/04	UPDATE DRAWING FORMAT



- NOTE:
1. CRIMPED FERRULE  
HEX CRIMP SIZE .429"
  2. CONTACT PIN TO SOLDER  
OR .118" HEX CRIMP

9	DESCRIPTION	MATERIAL	FINISH	QTY	DO NOT SCALE DRAWING	CAD FILE	DWG. NO.	REV.	SIZE	SCALE
9						C:/122/122393.DWG	122393.DWG	A	A	NA
8										
7										
6										
5										
4	FERRULE	COPPER	NICKEL	1						
3	CONTACT PIN	PHOS. BRONZE	GOLD	1						
2	INSULATOR	TEFLON	NATURAL	1						
1	BODY	BRASS	NICKEL	1						
<p>UNLESS OTHERWISE SPECIFIED DIMENSIONS ARE IN MILLIMETERS. DIMENSIONS IN [ ] ARE IN INCHES AND FOR CUSTOMER REFERENCE ONLY.</p> <p>UNLESS OTHERWISE SPECIFIED TOLERANCES FOR MILLIMETERS ARE:  0.5 - 8mm ± 0.20mm  8 - 30mm ± 0.40mm  30 - 120mm ± 0.50mm</p> <p>UNLESS OTHERWISE SPECIFIED TOLERANCES FOR INCHES ARE:  .020 - .315 = ± 0.007"  .315 - 1.180 = ± 0.015"  1.180 - 4.724 = ± 0.020"</p>						<p>APPROVALS</p> <p>DATE</p> <p>01/15/04</p> <p>G.R.S.</p> <p>1 OF 1</p> <p>PART DESCRIPTION</p> <p>TNC CRIMP PLUG (FOR BELDEN 8214, 9913, 9914 CABLE)</p> <p>PART NO.</p> <p>122393</p>				

**Amphenol Connex**