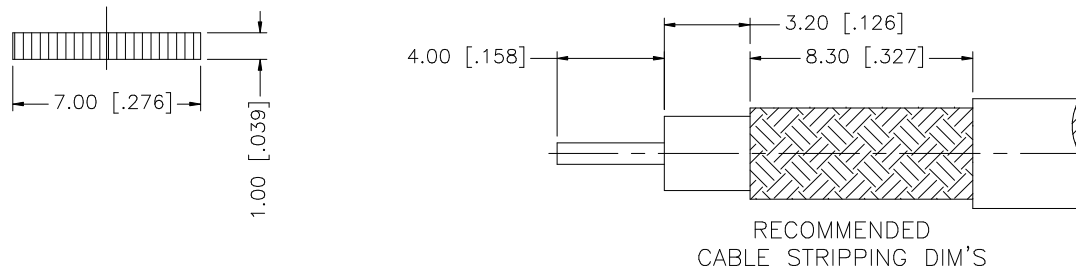
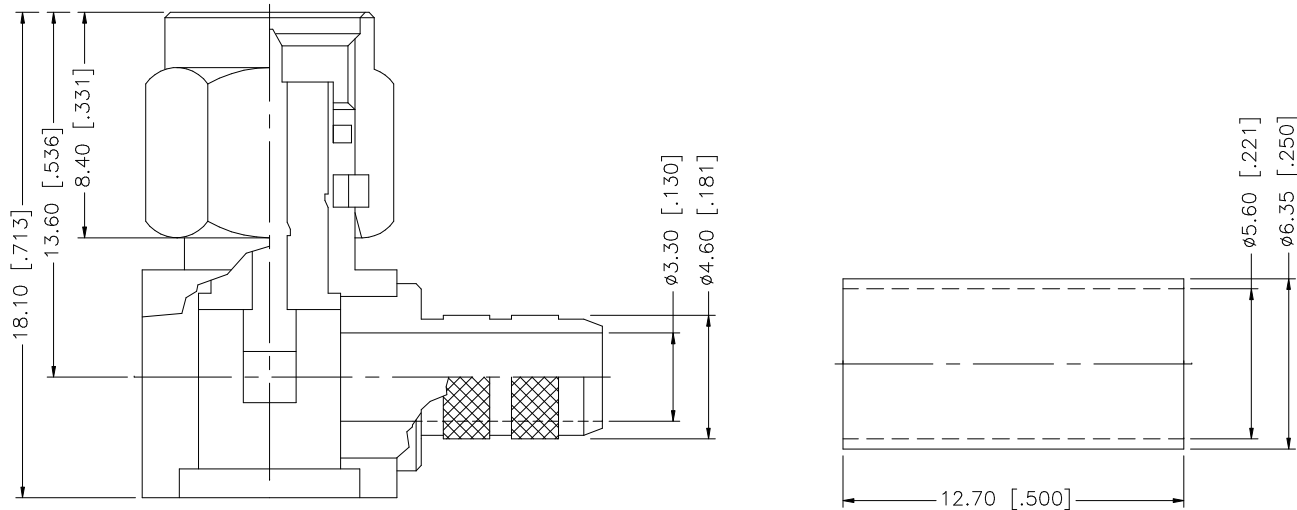


REV.	DATE	DESCRIPTION
NC	08/11/98	INITIAL RELEASE
A	07/21/05	UPDATE DRAWING FORMAT



8					<small>UNLESS OTHERWISE SPECIFIED DIMENSIONS ARE IN MILLIMETERS. DIMENSIONS IN [] ARE IN INCHES AND FOR CUSTOMER REFERENCE ONLY.</small> <small>UNLESS OTHERWISE SPECIFIED TOLERANCES FOR MILLIMETERS ARE:</small> 0.5 - 8mm ± 0.20mm 8 - 30mm ± 0.40mm 30 - 120mm ± 0.50mm <small>UNLESS OTHERWISE SPECIFIED TOLERANCES FOR INCHES ARE:</small> .020 - .315 = ± 0.007" .315 - 1.180 = ± 0.015" 1.180 - 4.724 = ± 0.020"	APPROVALS	DATE	<h1 style="color: blue; text-align: center;">Amphenol Connex</h1>							
7				DRAWN		G.R.S.	07/21/05								
6				CHECKED											
5	FERRULE	COPPER	GOLD	1		ISSUED									
4	COVER	BRASS	GOLD	1	SHEET	1 OF 1	PART DESCRIPTION <h2 style="text-align: center;">SMA R/A CRIMP PLUG - LMR 200</h2>								
3	CONTACT PIN	BRASS	GOLD	1			PART NO. <h2 style="text-align: center;">132235</h2>								
2	INSULATOR	TEFLON	NATURAL	1											
1	BODY	BRASS	GOLD	1											
DESCRIPTION		MATERIAL	FINISH	QTY	DO NOT SCALE DRAWING		CAD FILE	DWG. NO.	132235.DWG	REV.	A	SIZE	A	SCALE	NA