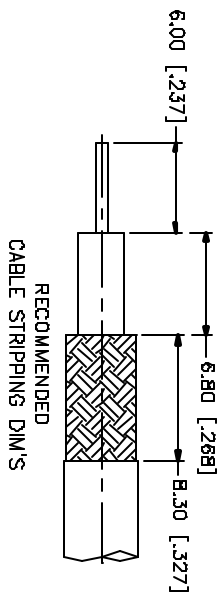
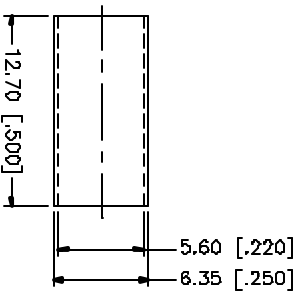
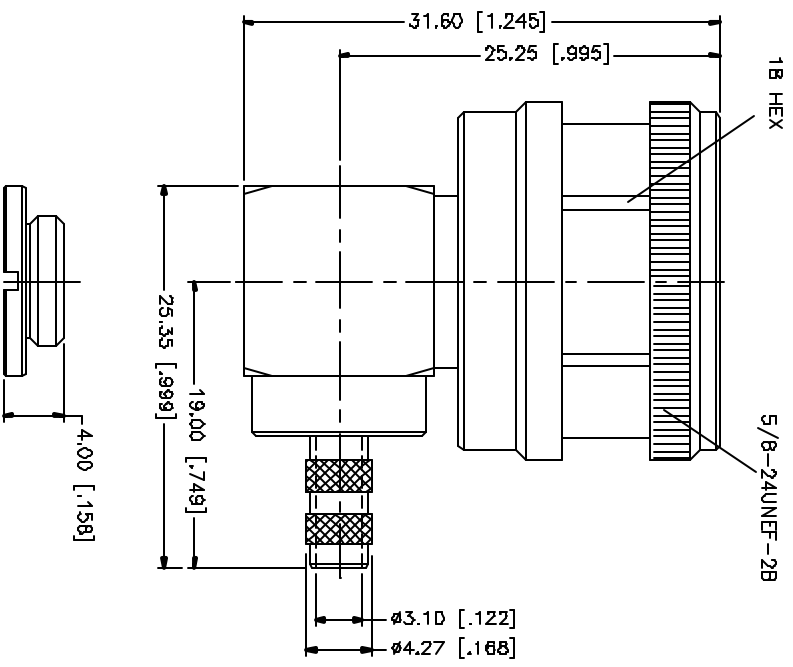


REV	DATE	DESCRIPTION
NC	07/25/04	INITIAL RELEASE



NOTE:
 1. CRIMPED FERRULE
 HEX: CRIMP SIZE .213"
 2. CONTACT PIN TO SOLDER.

QTY	FINISH	MATERIAL	DESCRIPTION
1	NEXCOTE	BRASS	INSULATOR
1	NATURAL	TEFLON	CONTACT PIN
1	NEXCOTE	BRASS	BODY
1	NEXCOTE	COPPER	FERRULE
1	NEXCOTE	BRASS	CLAMP NUT
1	GOLD	BRASS	CONTACT PIN
1	NATURAL	TEFLON	INSULATOR
1	NEXCOTE	BRASS	BODY

APPROVALS	DATE
DRAWN G.R.S.	07/25/04
CHECKED	
ISSUED	
BIHET 1 QF 1	

Amphenol Connex

N R/A CRIMP PLUG
 (FOR RG-55/U, 142A/U, 223/U, 400/U CABLE)

PART NO. 172178-10

DWG. NO. 172178-10.DWG

REV. NC BZE A SCALE NA

DDO FILE C:/172/172178-10.DWG

UNLESS OTHERWISE SPECIFIED DIMENSIONS ARE IN MILLIMETERS, DIMENSIONS IN [] ARE IN INCHES AND FOR CUSTOMER REFERENCE ONLY. TOLERANCES FOR MILLIMETERS ARE:
 0.5 - .30mm ± 0.20mm
 .30 - .125mm ± 0.10mm
 .125 - .050mm ± 0.050mm
 UNLESS OTHERWISE SPECIFIED DIMENSIONS FOR INCHES ARE:
 .020 - .315 = ± 0.007"
 .315 - 1.180 = ± 0.015"
 1.180 - 4.724 = ± 0.020"