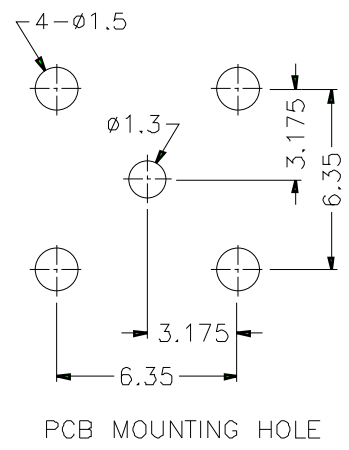
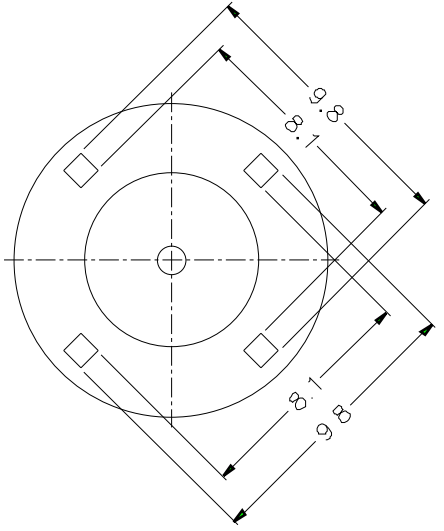
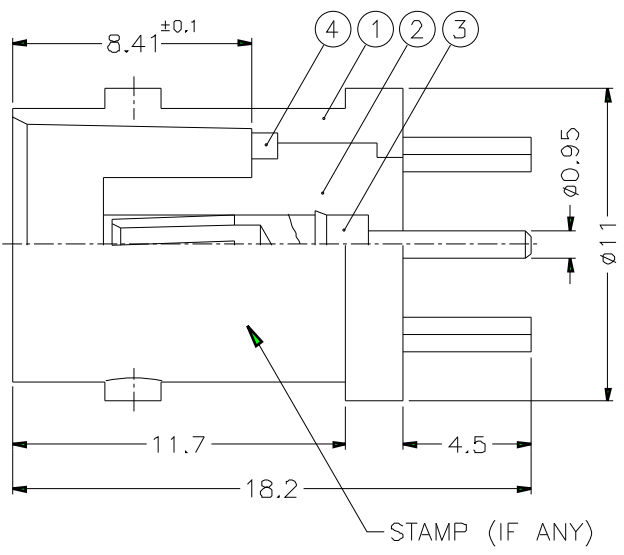


1			2			3			4			5			6			7			8		
REVISIONS																							
ISS	ZONE	DESCRIPTION\PER REQUEST\DATE																					



NOTES: FINISH (PLATING THICKNESS IN MICRO-INCHES)  
 1. BRASS PER QQ-B-626  
 2. BRASS PER QQ-B-613  
 3. NICKEL PL. 100 MIN. THICK OVER COPPER STRIKE  
 4. PHOSPHOR BRONZE PER QQ-B-750  
 5. GOLD PL. 3 MIN. THICK OVER NICKEL PL. 100 MIN. THICK OVER COPPER STRIKE  
 6. TEFLON MIL-P-19468

DIMENSIONS ARE IN MILLIMETERS									
UNLESS OTHERWISE SPECIFIED TOLERANCES									
0.5-6 = ±0.2									
6-30 = ±0.4									
30-120 = ±0.6									
120-315 = ±1									
315-1000 = ±1.6									
1000-2000 = ±2.4									

PART NO		B6251C1-NT3G-50	
APPROVED	DATE	10-11-01'	
CHECKED	DATE	10-11-01'	
DRAWN	DATE	10-11-01'	
FILE NO.			

<b>Amphenol</b>	
TITLE BNC P.C. MOUNT RECEPT. JACK	
DRAWING NO. KJ-B6251C1-NT3G-50	
ITEM NO.	

4	LOCK RING	NOTE 2	NOTE 3	1	B7700-4
3	CONTACT PIN	NOTE 4	NOTE 5	1	B7700-3
2	INSULATOR	NOTE 6	NATURAL	1	B7700-2T-50-B
1	BODY	NOTE 1	NOTE 3	1	B7700-1-A
NO.	DESCRIPTION	MATERIAL	FINISH	Q'TY	DRAWING NO.

1			2			3			4			5			6			7			8		
---	--	--	---	--	--	---	--	--	---	--	--	---	--	--	---	--	--	---	--	--	---	--	--