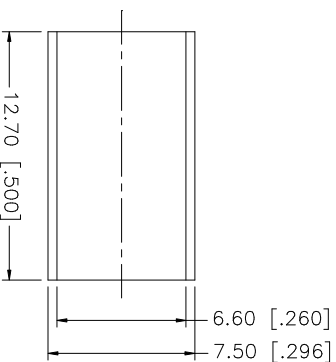
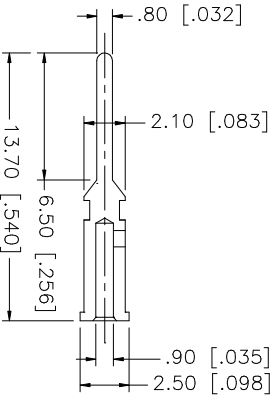
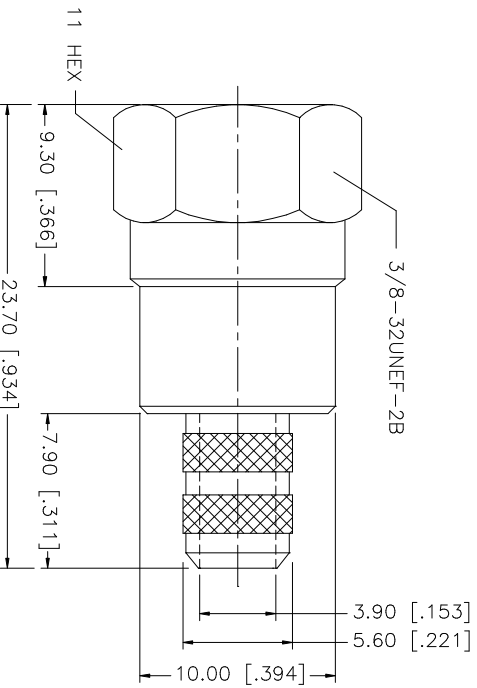
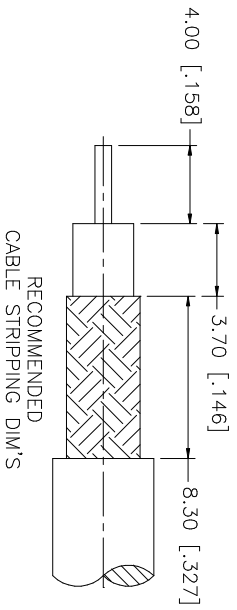


REV.	DATE	DESCRIPTION
A	03/06/03	UPDATE DRAWING FORMAT



- NOTE:
1. CRIMPED FERRULE
HEX CRIMP SIZE ".255"
 2. CRIMPED CONTACT PIN
HEX CRIMP SIZE ".068"

NO.	DESCRIPTION	MATERIAL	FINISH	QTY	UNLESS OTHERWISE SPECIFIED DIMENSIONS ARE IN MILLIMETERS. DIMENSIONS IN [] ARE IN INCHES AND FOR CUSTOMER REFERENCE ONLY. TOLERANCES FOR MILLIMETERS ARE:	APPROVALS	DATE	PART DESCRIPTION
8					0.5 - 8mm ± 0.20mm	DRAWN G.R.S.	03/06/03	F CRIMP PLUG (FOR RG-59/U 20AWG - BELDEN 9100)
7				8 - 30mm ± 0.40mm				
6				30 - 120mm ± 0.50mm				
5	FERRULE	BRASS	NICKEL	1	UNLESS OTHERWISE SPECIFIED DIMENSIONS ARE IN MILLIMETERS. DIMENSIONS IN [] ARE IN INCHES AND FOR CUSTOMER REFERENCE ONLY. TOLERANCES FOR MILLIMETERS ARE:	CHECKED		
4	BARREL	BRASS	NICKEL	1	0.20 - .315 ± ± 0.007"	ISSUED		
3	CONTACT PIN	BRASS	GOLD	1	.315 - 1.180 ± ± 0.015"	SHEET 1 OF 1		
2	INSULATOR	DELRIN	NATURAL	1	1.180 - 4.724 ± ± 0.020"	CAD FILE		
1	SHELL/BODY	BRASS	NICKEL	1	DO NOT SCALE DRAWING	C:/222/222119.DWG		
	DESCRIPTION	MATERIAL	FINISH	QTY				

Amphenol **Connex**

F CRIMP PLUG
(FOR RG-59/U 20AWG - BELDEN 9100)

222119

DWG. NO. 222119.DWG REV. A SIZE A SCALE NA