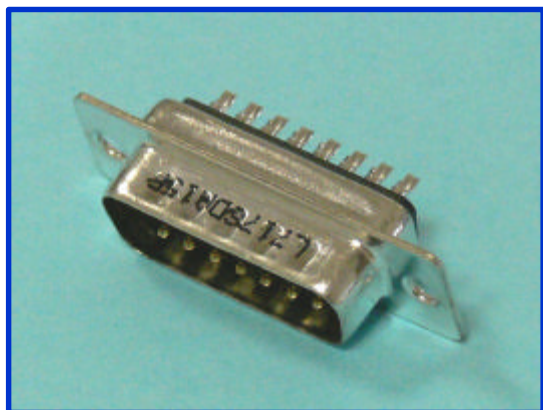


Plug Solder Cup



**Specifications :**

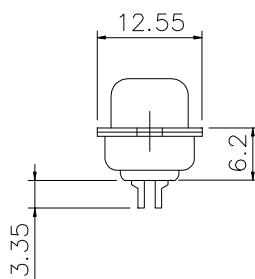
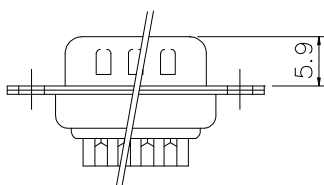
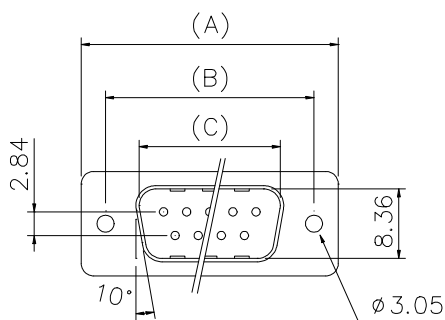
Contact Resistance : 20 m $\Omega$  Max  
 Insulator Resistance : 1000 M $\Omega$  Min at 500V DC  
 Current Rating: 5A  
 Dielectric Withstanding Voltage : 1000V AC for 1 minute  
 Operating Temperature : -55 $^{\circ}$ C to +105 $^{\circ}$ C

**Materials :**

Contact : Brass  
 Housing : Glass-filled thermoplastic, UL94V-0  
 Shell : Steel, Tin plated

**Dimensions :**

Nb of Contacts	A	B	C
9	30,89	24,99	16,92
15	39,10	33,32	25,25
25	53,09	47,04	38,96
37	69,40	63,50	55,42



**Part Numbers :**

Nb of Contacts	Performance Level 3 ( flash Gold )	Performance Level 2 ( 0,38 $\mu$ m Gold )	Performance Level 1 ( 0,76 $\mu$ m Gold )
9	L717SDE09P	L777SDE09P	L717SDE09PC309
15	L717SDA15P	L777SDA15P	L717SDA15PC309
25	L717SDB25P	L777SDB25P	L717SDB25PC309
37	L717SDC37P	L777SDC37P	L717SDC37PC309

Performance levels as per DIN 41 652/IEC 807-3