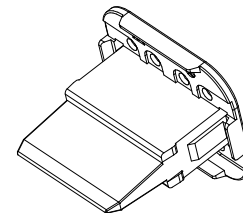
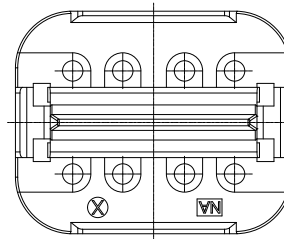
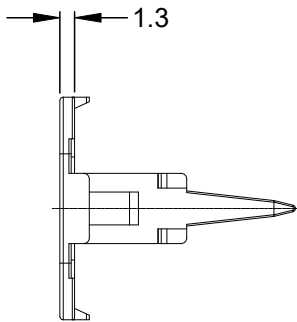
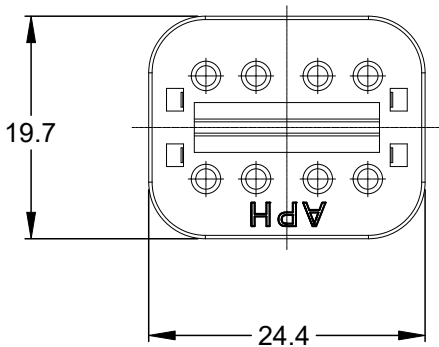
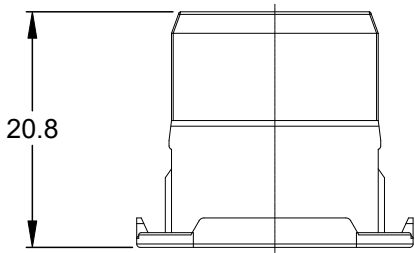



REVISIONS					
REV	ECO	DESCRIPTION	DATE	BY	APPR
A3	--	RELEASE NEW DWG FORMAT	18/SEP/13	DRP	
A4	--	UPDATE DRAWING	10/MAY/19	JOE	TOMMY
A5	--	ADDED 2 RIBS, SHOW THRU TOOLING HOLES	06JUN2023	JAH	DH
A6		ADDED APH MARK TO VIEW	15OCT24	JHEAD	



- NOTES: UNLESS OTHERWISE SPECIFIED
- 1. MATERIAL: THERMOPLASTIC; COLOR: GREEN
 - 2. RoHS COMPLIANT
 - 3. CAVITIES: 8
 - 4. KEYED: N/A
 - 5. USE WITH CONNECTORS AT06-08S*
(* = MODIFICATIONS AND/OR COLORS)
 - 6. ALL DIMENSIONS ARE FOR REFERENCE USE ONLY.

		AW8S			
QUANTITY		PART NUMBER		DESCRIPTION	
				ITEM	
MATERIALS LIST					
<div>UNLESS OTHERWISE SPECIFIED</div> <div>1) All dimensions are in metric(mm).</div> <div>2) Tolerances are as follows:</div> <div>1 PL DEC ±0.30</div> <div>2 PL DEC ±0.15</div> <div>3 PL DEC ±0.08</div> <div>3) Note reference = </div> <div>MATERIAL SPECIFICATIONS:</div> <div>PROCESS SPECIFICATIONS:</div> <div>NEXT ASSY:</div>		SIGNATURES		DATE	
		DRAWN: JOE		10/MAY/19	
		CHECKED: ORION		10/MAY/19	
		ENGINEER:			
		APPROVAL: TOMMY		10/MAY/19	
		CUSTOMER:		<div>Sine Systems - www.amphenol-sine.com</div> <div>44724 Morley Drive</div> <div>Clinton Township, MI 48036</div> <div>S-WEDGELOCK, 8 POSITION, AT SERIES</div>	
		THIS DRAWING IS SUPPLIED FOR INFORMATION ONLY. DESIGN FEATURES, SPECIFICATIONS AND PERFORMANCE DATA SHOWN HEREON ARE THE PROPERTY OF THE AMPHENOL CORPORATION. NO RIGHTS OF REPRODUCTION ARE IMPLIED. ALL DIMENSIONS ARE SUBJECT TO NORMAL MANUFACTURING VARIATIONS.			
		SIZE	TYPE	DWG NO:	REVISION
		A	C-	AW8S	A6
		SCALE: NONE			SHEET 1 OF 1