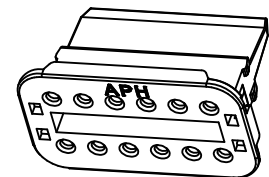
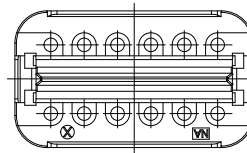
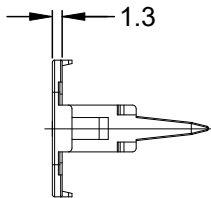
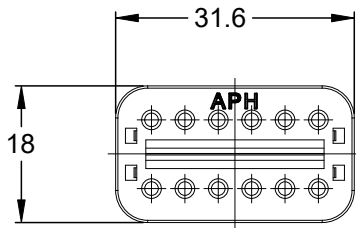
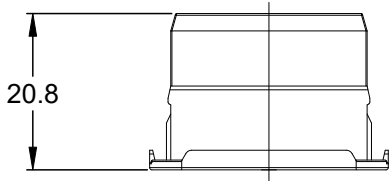


REVISIONS					
REV	ECO	DESCRIPTION	DATE	BY	APPR
A4		RELEASE NEW DWG FORMAT	18/SEP/13	DRP	
A5		ADDED 2 RIBS, SHOW THRU TOOLING HOLES	6JUN2023	JAH	
A6		ADDED APH MARK TO VIEW	15OCT24	JHEAD	



- NOTES: UNLESS OTHERWISE SPECIFIED
- 1. MATERIAL: THERMOPLASTIC; COLOR: GREEN
 - 2. RoHS COMPLIANT
 - 3. CAVITIES: 12
 - 4. KEYED: N/A
 - 5. USE WITH CONNECTORS AT06-12S*
(* = MODIFICATIONS AND COLORS)
 - 6. ALL DIMENSIONS ARE FOR REFERENCE USE ONLY.

AW12S			
QUANTITY	PART NUMBER	DESCRIPTION	ITEM
MATERIALS LIST			
<div>UNLESS OTHERWISE SPECIFIED</div> <div>1) All dimensions are in metric(mm).</div> <div>2) Tolerances are as follows:</div> <div>1 PL DEC ±0.30</div> <div>2 PL DEC ±0.15</div> <div>3 PL DEC ±0.08</div> <div>3) Note reference = </div>		<div>SIGNATURES</div> <div>DRAWN: D.PARKS</div> <div>CHECKED:</div> <div>ENGINEER:</div> <div>APPROVAL:</div> <div>CUSTOMER:</div> <div>THIS DRAWING IS SUPPLIED FOR INFORMATION ONLY. DESIGN FEATURES, SPECIFICATIONS AND PERFORMANCE DATA SHOWN HEREON ARE THE PROPERTY OF THE AMPHENOL CORPORATION. NO RIGHTS OF REPRODUCTION ARE IMPLIED. ALL DIMENSIONS ARE SUBJECT TO NORMAL MANUFACTURING VARIATIONS.</div>	<div>DATE</div> <div>18/SEP/13</div> <div>Amphenol</div> <div>Sine Systems - www.amphenol-sine.com</div> <div>44724 Morley Drive</div> <div>Clinton Township, MI 48036</div> <div>S-WEDGELOCK, 12 POSITION, AT SERIES</div>
MATERIAL SPECIFICATIONS:			
PROCESS SPECIFICATIONS:			
NEXT ASSY:			