

5. INDICATED AREA SHALL BE CAPABLE OF MEETING THE SOLDERABILITY REQUIREMENTS OF 9-8825 AFTER STEAM AGING.
4. ALL DIMENSIONS ARE AFTER PLATING.
3. BLUE INK STAMP TRADEMARK 9-6700 TYPE IV, PER 9-1180 IN APPROXIMATE POSITION SHOWN AFTER PLATING. DIRECTION OPTIONAL. TRADEMARK MAY BE SOLID AS SHOWN.

2. ADD LAST CHARACTER TO SUFFIX FOR FINISH:

SUFFIX LAST CHARACTER	FINISH	SPEC
2	GOLD PLATE	9-6800-2
3	GOLD PLATE	9-6800-3
4	GOLD PLATE	9-6800-4
5	GOLD PLATE	9-6800-5
F	GOLD PLATE	9-6800-F
G	GOLD PLATE	9-6800-G
H	GOLD PLATE	9-6800-H
X	GOLD, PALLADIUM, NI	9-111

1. PROCESS SPEC:  
TEST 9-5272-16  
9-6700, 9-1180, 9-6800, 9-8825, 9-9111

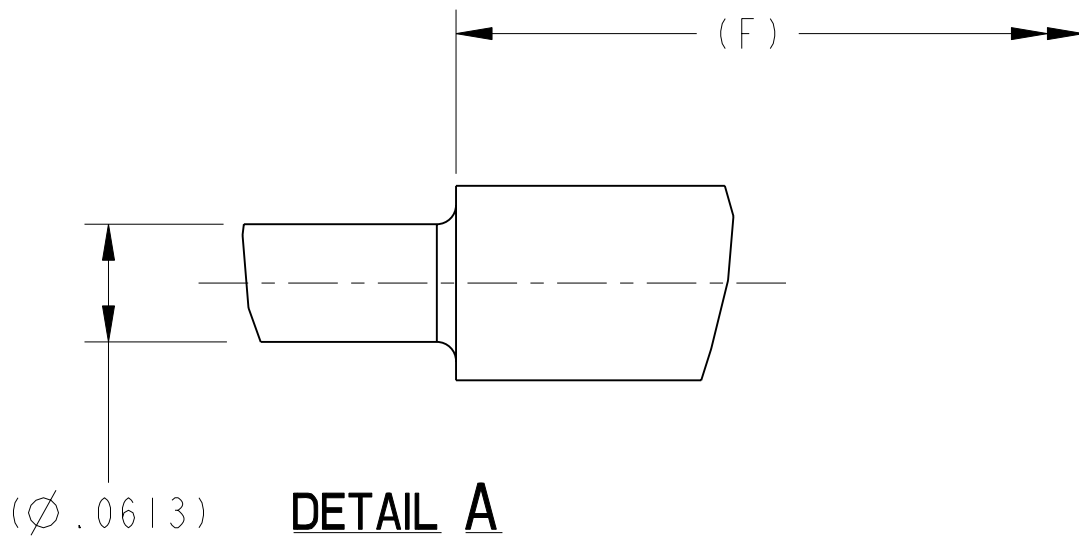
NOTES:

THE USE OF THIS DOCUMENT IS UNLIMITED. HOWEVER, DOCUMENTS REFERENCED HEREON MAY CONTAIN LIMITED RIGHTS DATA.


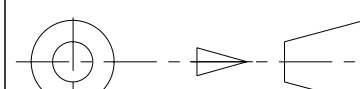
N/A

NEXT ASSEMBLY

PRO/ENGINEER INFORMATION
Pro/e Model Used:
Drawing Name:



DETAIL A  
TYPE II

UNLESS OTHERWISE SPECIFIED		SPECIFICATIONS		POS	QTY	PART NUMBER	DESCRIPTION	NOTE					
LINEAR DIMENSIONS ARE IN INCHES TOLERANCES: .XXXX = ±.0005    ANGLES= ±2° .XXX = ±.010 .XX = ±.03 .X = ±.1  ----- DIM.& TOL. PER ASME Y14.5M; DRM PER MIL-DTL-31000; OTHER Amphenol Stds. PER 9-3800  LEGENDS: -FLAG NOTE CALL OUT REFERENCE ONLY  		MATERIAL SPEC.		PARTS LIST									
		N/A		APPROVALS		DATE		<div>AMPHENOL CORPORATION</div> <div>40-60 DELAWARE AVENUE SIDNEY, N.Y. 13838</div> <div>CONTACT, PIN, ELECTRICAL CONNECTOR, SIZE 16, PCB, TYPE JT-R</div>					
				PREPARED BY G. LARSON		9-30-98							
				ENGINEER IN CHARGE L. RATCHFORD									
				DESIGN MANAGER H. JOHNSON									
PROCESS SPEC.		DESIGN ACTIVITY GROUP MIL/AERO DEVELOP											
SEE NOTE 1		THIRD ANGLE PROJECTION				SIZE C		CAGE CODE 77820		DOCUMENT NO. 10-497630		REV. AF	
						SCALE: 10:0		REF. 10-251415-16()		SHEET 1 OF 2			

REV	SHEET 1 OF 2	DOCUMENT NO. 10-497630
REVISIONS		
LTR	DESCRIPTION	DATE
P	SEE RECORD DRWG FOR REV K-N (CL 11) ADD/REL -22/ -26 ECN: 96802	H REEVE 05-05-05
R	(CL 11) ADD/REL -27/-32 ECN: 97884	JHEATH 9-8-05
T	(CL 11) ECN A0878 ADD & REL -31( ) AND -32( )	D. SMITH 06/06/06
U	CL(11) ADD/REL -33( ) & -34( ) ECN: A1430	DJSMITH 10/2/06
V	(CL11) SEE ENG CHG NOTICE ECN: A2641	DJSMITH 5/3/07
W	(CL11) SEE ENG CHG NOTICE ECN: A4875	DJSMITH 4/4/08
Y	(CL 11) SEE CHG NOTICE ECN: B1107-0000	3/11/11
AA	(CL 11) SEE CHG NOTICE ECN: B1462-0000	6/6/11
AB	(CL 11) ADDED -41( ) ECN: B2220-0000	8/12/11
AC	(CL 11) ADDED -42( ) ECN: B2597-0000	1/11/12
AD	(CL 11) ADDED -43 THRU -46 ECN: B7755-0000	4/2/14
AE	(CL 11) ADDED -47 THRU -49 ECN: C1851-0000	1/4/16
AF	(CL 1) ECN: C2915 ADDED -50 THRU -52	7/29/16

