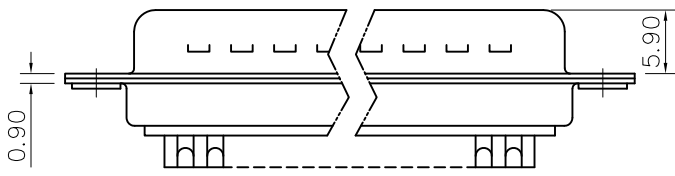
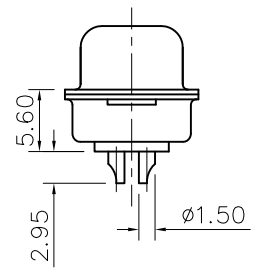
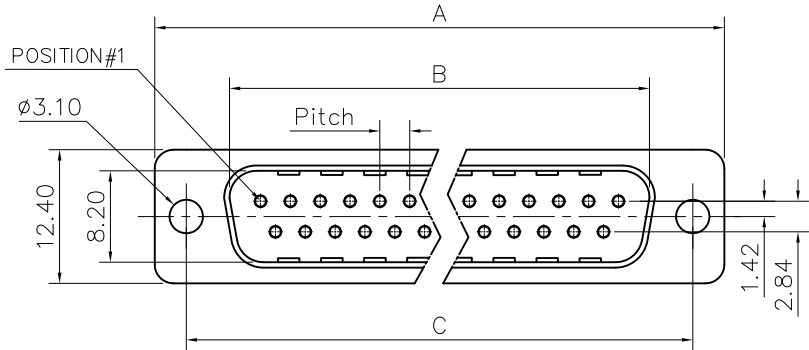


This document is the property of Amphenol Corporation and is delivered on the express condition that it is not to be disclosed, reproduced or used, in whole or in part, for manufacture or sale by anyone other than Amphenol Corporation without its prior consent, & that no right is granted to disclose or to use any information in this document.

Customer Drawing



DIM.S	A	B	C	Pitch
09	30.70	16.80	25.00	2.74
15	39.00	25.10	33.30	2.74
25	52.90	38.80	47.00	2.76
37	69.20	55.30	63.50	2.76

REVISIONS				
SYM	ECN	DESCRIPTION	DATE	APPROVED
1	HK--	First Release Drawing	02/22/18	IP

D-SUB TECHNICAL DATA

SHELL : Steel, 2.5um(100u") min tin over 1.25um(50u") min nickel
 BODY : Glass filled thermoplastic.
 CONTACTS : Flame retardant to UL94 V-0, Color Black
 CONTACTS : Brass.
 ELECTRICAL : Voltage rating : 300 V RMS at 50 Hz
 Current rating 7.5A.
 Insulation resistance >5000 M Ohms
 Withstanding voltage 1000V AC for one minute
 Contact resistance 20 mOhms max.
 CLIMATIC : Temperature range -55°C up to +85°C
 Damp heat 56 days(40°C-95% HR)
 MARKING : Amphenol...(Series No.)
 Commercial reference
 Manufacturing date

PRODUCT CODE

L 717DF X XX P

L: RoHS Compliance

Contact type:
P: Male

717D: tinned shell +
dimples for plug

Configuration: 09,15,25,37

Shell Size :E,A,B,C

UNLESS OTHERWISE SPECIFIED TOLERANCES	APPROVAL	DATE
U.S. METRIC	DRAWN Victor.LA	02/22/18
.X +/- 0.50	CHECKED Tony.Tung	02/22/18
.XX +/- 0.30	CHECKED	
.XXX +/- 0.20		
FRACTIONS +/- 2'		
ANGLES +/-		
FOR MATERIALS AND FINISHES SEE NOTES	DRAWING FILE :	
REMOVE SHARP EDGES	ANGLE OF PROJECTION	
DIMENSIONS		
U.S. INCHES		
METRIC MM		

Amphenol		
TITLE Machined contacts connector, D series		
SIZE	DRAWING NO.	REV.
A4	L717DXXXXP	1
SCALE	NONE	SHEET 1 OF 1