

<b>Avis de Modification Produit / Process</b> <i>Product / Process Change Notification</i>		<b>Référence / Reference</b>  <b>PCN 120712</b>	
		<b>Nb de pages / No. of pages</b> 11	<b>Date de Diffusion / Issue Date</b> 29/06/2017
<b>Familles Produit / Product Families</b>	<b>PT/451/VG95328 MIL-DTL-26482</b>	<b>Références Concernées / Concerned Part Numbers</b>	<b>Voir liste jointe / See attached list</b>
<b>Origine / Origin</b>	<b>Modification produit / Product modification</b>	<b>Diffusion / Distribution</b>	ALL CUSTOMERS / Distributors must forward to their customers

**Sujet / Subject**

Modification de design des embases à écrou type 07 livrées avec raccord de la famille PT/451.

*Design modification of jam nut receptacle 07 type of PT/451 range delivered with backshell.*

**Historique / History**

La PCN 115742 diffusé le 06/12/16 informait du changement de design du corps de l'embase, passant d'un filetage intérieur à un filetage extérieur. Ceci a été fait dans le but de rationaliser la gamme PT/451/VG95328 et pouvoir utiliser le même raccord arrière pour les embases et les fiches. Veuillez trouver ci-joint ladite PCN 115742.

*PCN 115742 diffused the 06/12/16 informed about shell bodies design modification, getting from an internal thread to an external thread. This modifications was made in order to rationalize PT/451/VG95328 ranges and use the same backshell with all receptacles and plugs.*

*Please find PCN 115742 attached.*

**Modification / Nature of Change**

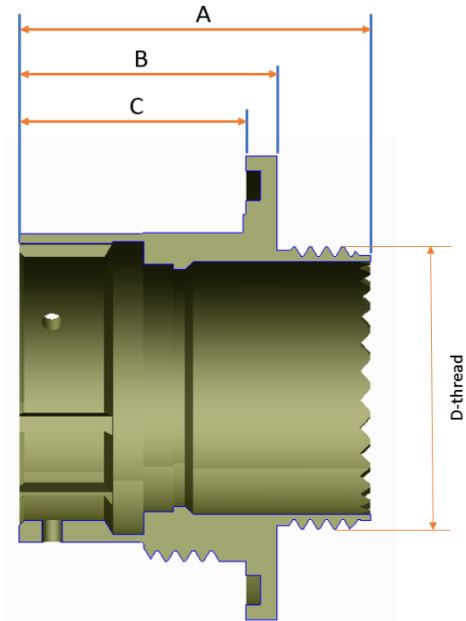
En raison de contraintes techniques, nous revenons au design antérieur à la PCN 115742. Le corps des embases à écrou type 07 sera modifié avec un filetage intérieur au lieu d'un filetage extérieur. Les raccords arrières spécifiques à la PT07 avec filetage extérieur seront donc remis en place. Ceci s'applique uniquement aux références ayant rencontré des difficultés techniques suite au changement de design. Vous trouverez les références concernées à la fin de ce document. Veuillez trouver également ci-dessous le comparatif technique de l'ancien et du nouveau design des produits concernés.

*Due to technical constrains, we will come back to the previous design before the PCN 115742. The jam nut receptacles 07 shell body will be updated with an internal thread instead of an external thread. Specific backshells for PT07 with external thread will be reinstated. This applies only to references which meet technical difficulties due to the design change. You will find at the end of this document, part numbers concerned.*

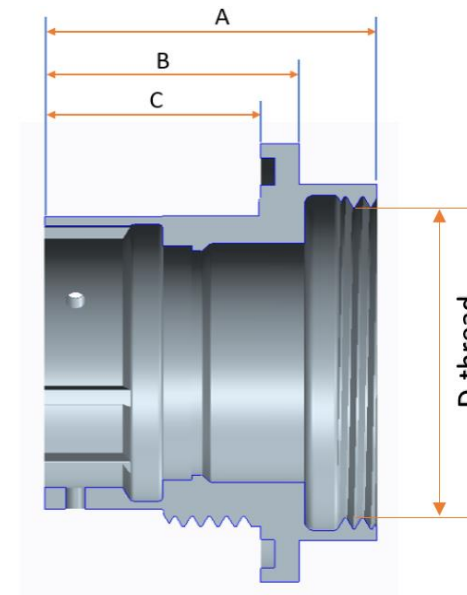
*Please find below the technical comparison between former and new design of concerned products.*

# Technical comparison - Former & New Jam-nut receptacle shell design

**Former design**  
**Under PCN 115742**  
**(Except PT07 A)**



**New design**  
**For versions PT07 E / PT07 SE only**



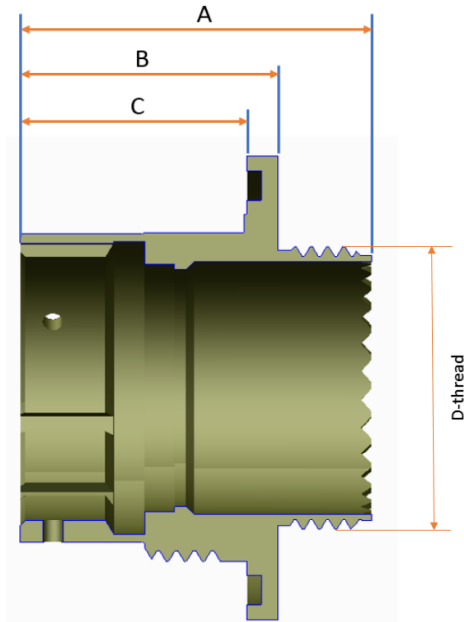
Size	A +/-0.13	B +0.15/-0	C +/-0.13	D Thread Class 2A
8	27.4	20.15	17.68	0.4375-28 UNEF 2A
10	27.4	20.15	17.68	0.5625-24 UNEF 2A
12	27.4	20.15	17.68	0.6875-24 UNEF 2A
14	27.4	20.15	17.68	0.8125-20 UNEF 2A
16	27.4	20.15	17.68	0.9375-20 UNEF 2A
18	27.4	20.15	17.68	1.0625-18 UNEF 2A
20	34	25.75	22.45	1.1875-18 UNEF 2A
22	34	25.75	22.45	1.3125-18 UNEF 2A
24	34.8	26.55	23.29	1.4375-18 UNEF 2A

Size	A +/-0.13	B +/-0.13	C +/-0.13	D Thread Class 2B
8	27.23	20.85	17.68	.625-24 UNEF 2B
10	27.23	20.85	17.68	.750-20 UNEF 2B
12	27.23	20.85	17.68	.8750-20 UNEF 2B
14	27.23	20.85	17.68	1.000-20 UNEF 2B
16	27.23	20.85	17.68	1.125-18 UNEF 2B
18	27.23	20.85	17.68	1.250-18 UNEF 2B
20	32.39	26.42	22.45	1.375-18 UNEF 2B
22	32.39	26.42	22.45	1.500-18 UNEF 2B
24	33.73	27.25	23.29	1.625-18 UNEF 2B

All dimensions in millimeter (mm)

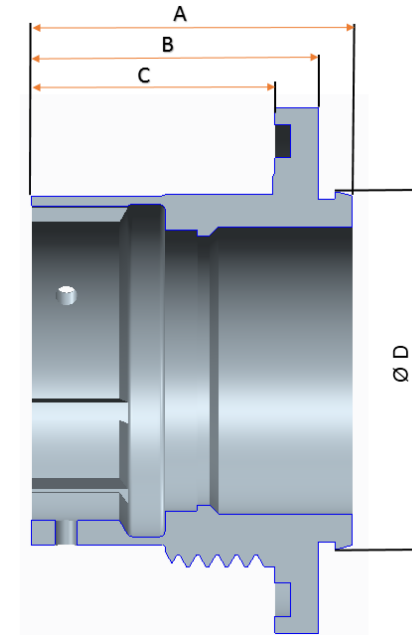
# Technical comparison - Former & New Jam-nut receptacle shell design

**Former design**  
For PT07 P under PCN 115742



Size	A +/-0.13	B +0.15/-0	C +/-0.13	D Thread Class 2A
8	27.4	20.15	17.68	0.4375-28 UNEF 2A
10	27.4	20.15	17.68	0.5625-24 UNEF 2A
12	27.4	20.15	17.68	0.6875-24 UNEF 2A
14	27.4	20.15	17.68	0.8125-20 UNEF 2A
16	27.4	20.15	17.68	0.9375-20 UNEF 2A
18	27.4	20.15	17.68	1.0625-18 UNEF 2A
20	34	25.75	22.45	1.1875-18 UNEF 2A
22	34	25.75	22.45	1.3125-18 UNEF 2A
24	34.8	26.55	23.29	1.4375-18 UNEF 2A

**New design**  
For version PT07 P only

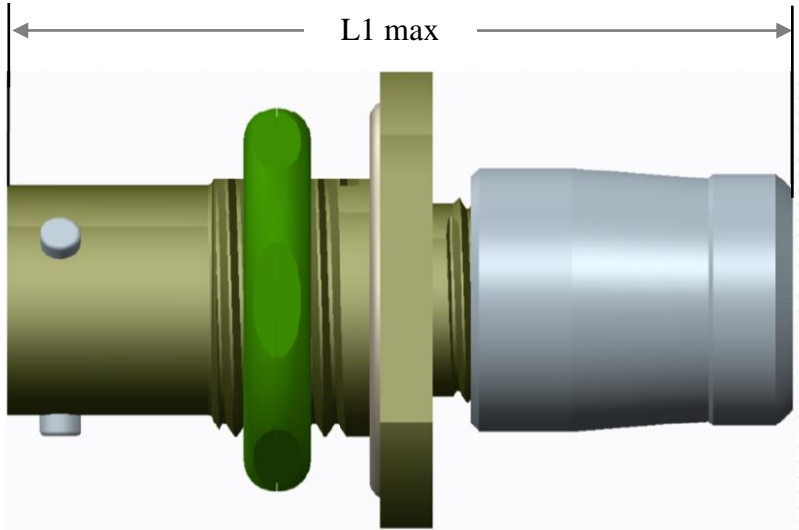


Size	A +/-0.13	B +/-0.13	C +/-0.13	ØD +0.25 / -0
8	23.32	20.85	17.68	13.11
10	23.32	20.85	17.68	16.31
12	23.32	20.85	17.68	19.46
14	23.32	20.85	17.68	22.66
16	23.32	20.85	17.68	25.86
18	23.32	20.85	17.68	29.01
20	26.42	26.42	22.45	32.21
22	26.42	26.42	22.45	35.36
24	29.72	27.25	23.29	38.56

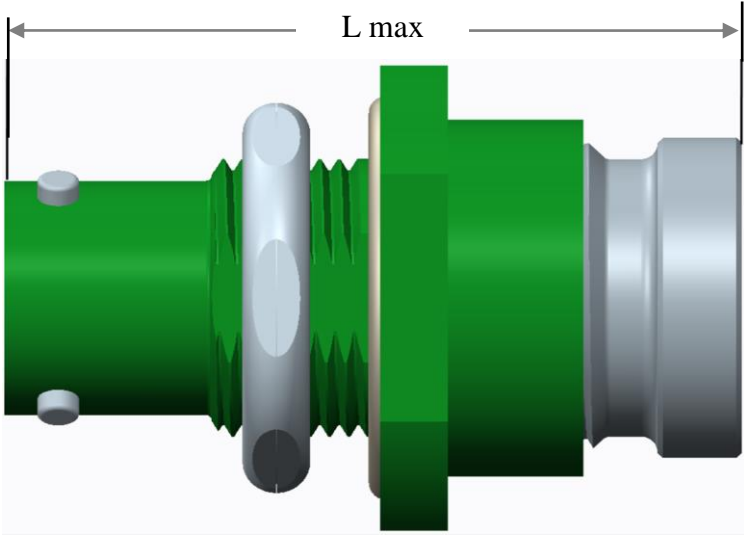
All dimensions in millimeter (mm)

# Technical comparison - Former & New PT07 E/SE, 45107 E/R, VG95328 D design

**Former Design (PCN 115742)**  
(Solder/Crimp version)



**New design**  
(Solder/Crimp version)

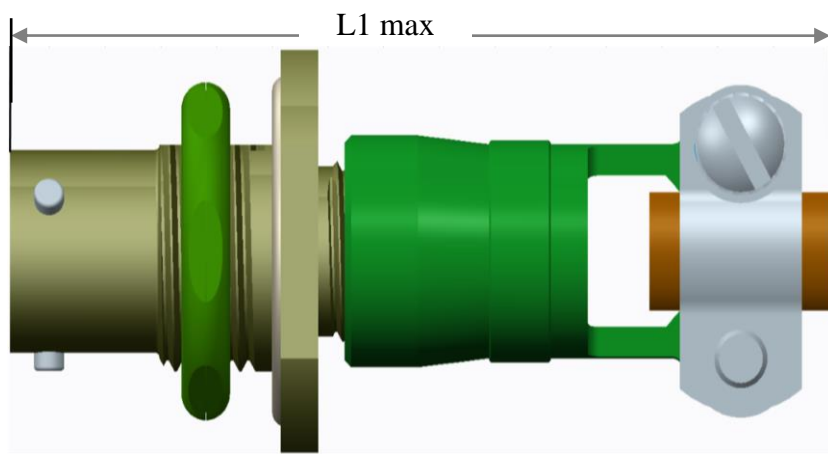


Shell Size	L max	L1 max
8	35,0	39,3
10	35,0	39,3
12	35,0	39,3
14	35,0	39,3
16	35,0	39,3
18	35,0	39,3
20	41,2	43,4
22	41,2	43,4
24	42,8	43,4

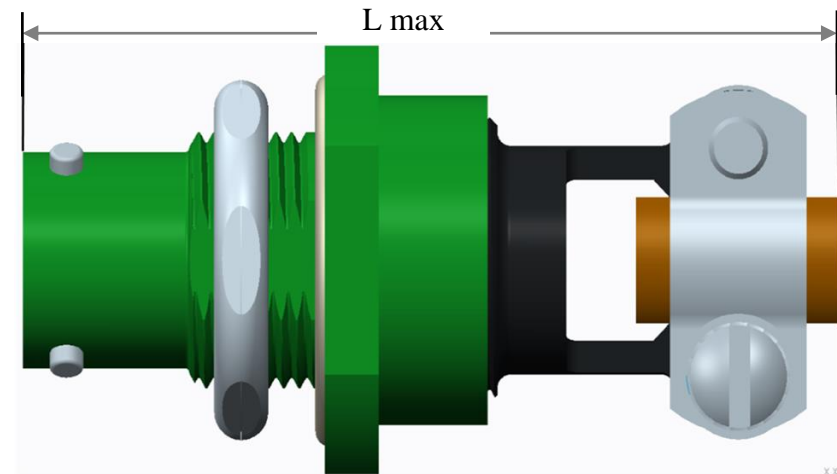
All dimensions in millimeter (mm)

# Technical comparison - Former & New PT07 E / SE (SR), 45107 EC/RC, VG95328 E design

**Former design (PCN 115742)**  
(Solder/Crimp version)



**New design**  
(Solder/Crimp version)

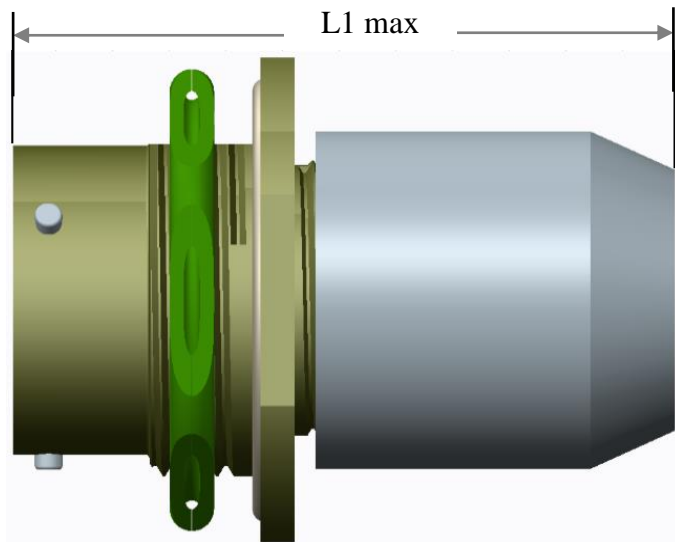


Shell Size	L max	L1 max
8	49,5	61,5
10	49,5	61,5
12	50,0	61,5
14	50,0	61,5
16	52,6	64,4
18	52,6	64,4
20	56,5	71,1
22	56,5	71,1
24	58,2	73,6

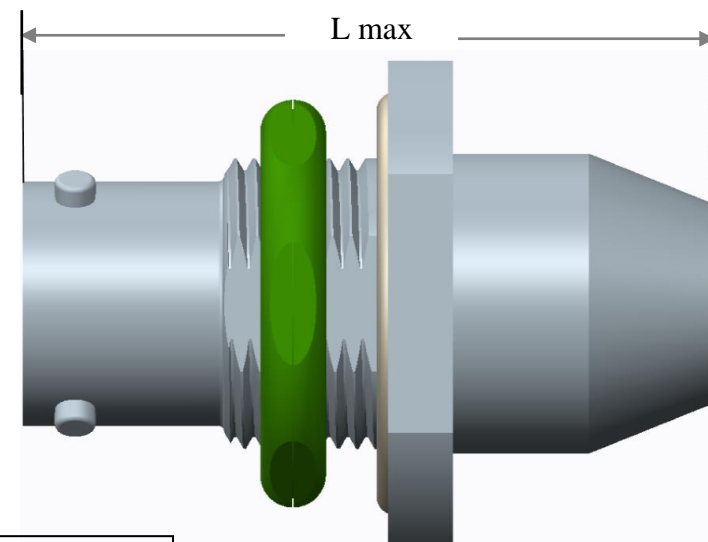
All dimensions in millimeter (mm)

## Technical comparison - Former & New PT07 P, 45107 P design

**Former design (PCN 115742)**  
(Solder/Crimp version)



**New design**  
(Solder/Crimp version)

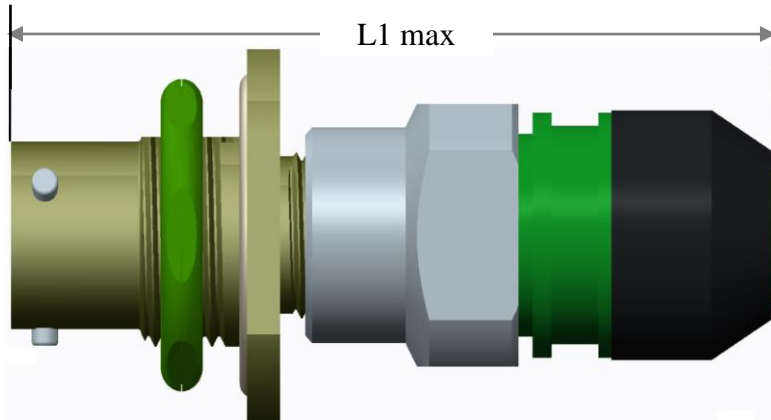


Shell Size	Solder version		Crimp version	
	L max	L1 max	L max	L1 max
8	34,5	45,0	39,9	51,0
10	34,5	45,0	39,9	51,0
12	34,5	45,0	39,9	51,0
14	34,5	45,0	39,9	51,0
16	34,5	45,0	39,9	51,0
18	34,5	45,0	39,9	51,0
20	42,0	52,0	47,1	56,0
22	42,0	52,0	47,1	56,0
24	42,7	53,0	47,9	57,0

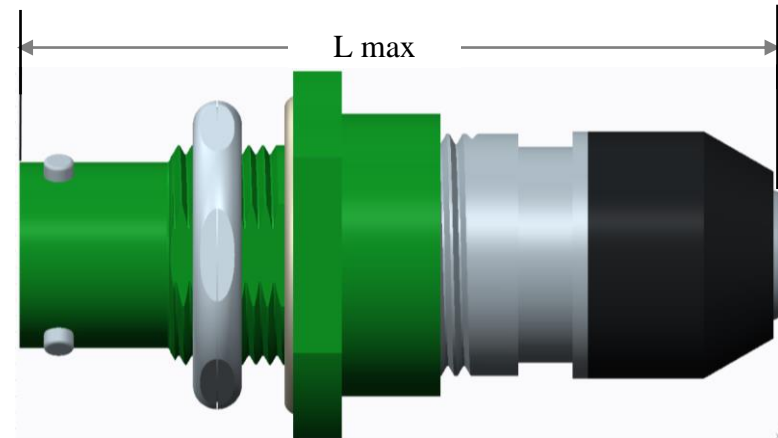
All dimensions in millimeter (mm)

## Technical comparison - Former & New PT07 SE (SQ), 45107 RG design

**Former design (PCN 115742)**  
(Crimp version only)



**New design**  
(Crimp version only)

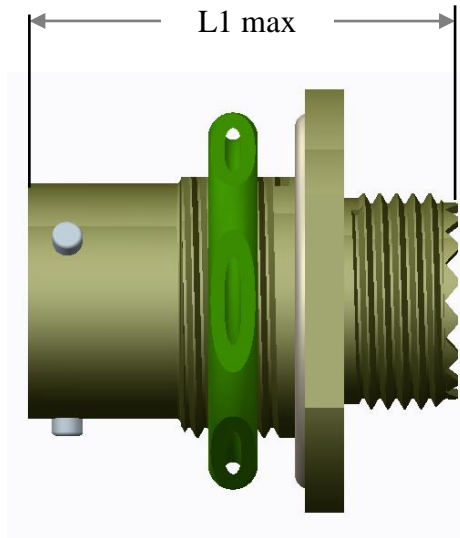


Shell Size	L max	L1 max
8	49,6	61,5
10	49,6	61,5
12	50,6	61,5
14	50,6	61,5
16	50,6	61,5
18	50,6	61,5
20	55,8	61,5
22	55,8	61,5
24	57,5	61,5

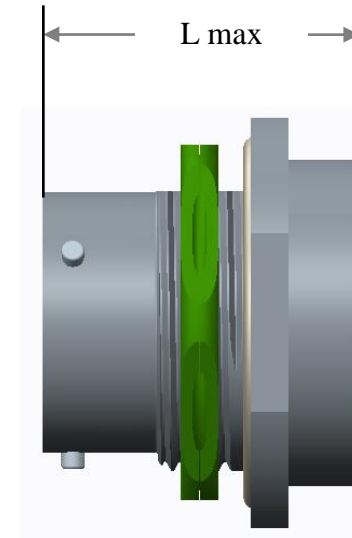
All dimensions in millimeter (mm)

## Technical comparison - Former & New PT77 A design

**Former design (PCN 115742)**  
(Solder version only)



**New design**  
(Solder version only)



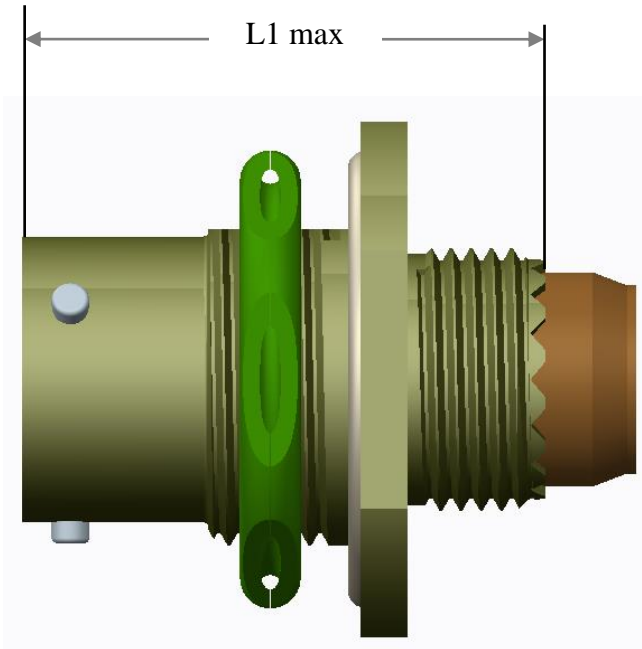
Size	L +/-0.13	L1 +/-0.13
8	27.23	27.4
10	27.23	27.4
12	27.23	27.4
14	27.23	27.4
16	27.23	27.4
18	27.23	27.4
20	32.39	34
22	32.39	34
24	33.73	34.8

All dimensions in millimeter (mm)

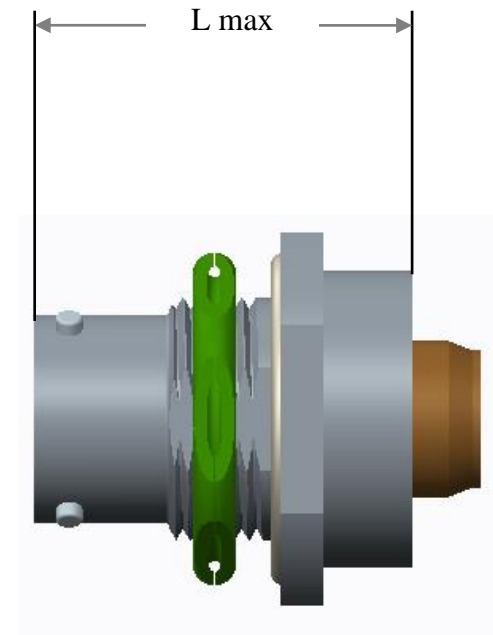


## Technical comparison - Former & New PT77 SE design

Former design (PCN 115742)  
(Crimp version only)



New design  
(Crimp version only)

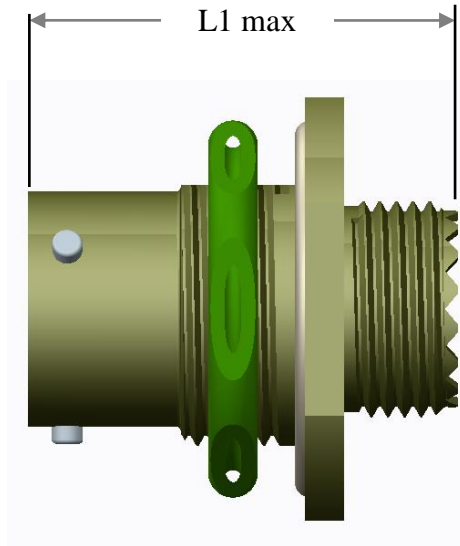


Size	L +/-0.13	L1 +/-0.13
8	27.23	27.4
10	27.23	27.4
12	27.23	27.4
14	27.23	27.4
16	27.23	27.4
18	27.23	27.4
20	32.39	34
22	32.39	34
24	33.73	34.8

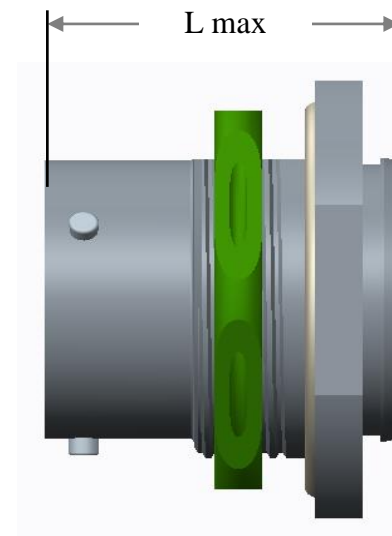
All dimensions in millimeter (mm)

## Technical comparison - Former & New PT77 P design

**Former design (PCN 115742)**  
**(Solder version only)**



**New design**  
**(Solder version only)**



Size	L1 +/-0.13	L +/-0.13
8	27.4	27.23
10	27.4	27.23
12	27.4	27.23
14	27.4	27.23
16	27.4	27.23
18	27.4	27.23
20	34	32.39
22	34	32.39
24	34.8	33.73

All dimensions in millimeter (mm)

**Références concernées et date / Affected part number and implementation date**

<b>Famille / Family</b>	<b>Références / Part Numbers</b>	<b>Date / Date</b>
<b>PT/451/VG95328 MIL-DTL-26482</b>	- PT07E / 45107E - PT07SE / 45107R - PT77 E/SE - VG95328 D  - PT07A (SR) / 45107AC - PT07E (SR) /45107EC - PT07SE (SR) / 45107RC - VG95328 E  - PT07P / 45107P - PT77 P  - PT07SE (SQ) / 45107RG	29/06/2017



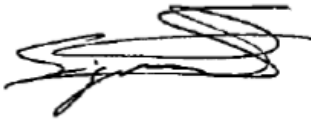

**Action / Action required**

Informer tous les clients. Les distributeurs doivent informer leurs propres clients.  
*Inform all customers. Distributors must inform their own customers.*

**Personne à contacter pour plus d'information / Person to contact for more information**

Support technique / *Technical support*  
[technicalsupport@amphenol-socapex.fr](mailto:technicalsupport@amphenol-socapex.fr)

**APPROBATIONS / Approvals**

<b>Engineering</b>	M. Balappa 	<b>Marketing</b>	K. Zerr 
<b>Quality</b>	S.Siguret 	<b>Industrial</b>	C.Jullian 

<b>Designation</b>	<b>Affected by using current design with external thread for accessory</b>	<b>Assembly Drawing number</b>
PT07A	No effect	171-800172-00
PT07E	Effect	171-800186-00
PT07C	No effect	-
PT07A(SR)	Effect	-
PT07E(SR/J/SQ)	Effect	171-800186-00
PT07A(PG)	Effect	-
PT07W	Effect	-
PT07P	Effect	171-800188-00
PT07G	No effect	-
PT07H	No effect	-
PT07EK	No effect	-
PT07KM	No effect	-
PT07SE	Effect	171-800187-00
PT07SE(SR/J/PG/SQ)	Effect	171-800187-00
PT07SP	No effect	171-800189-00
PT07SK(x)	No effect	-
PT77VG	No effect	171-800201-00
PT77A	Effect	171-800142-00
PT77SE	Effect	171-800150-00
PT77P	Effect	171-800143-00

<b><i>Remark</i></b>
No need to change, since shell design is different (172-89337x-00)
Need to change shell design with new proposal
Drawing is not available
Drawing is not available
Need to change shell design with new proposal
Drawing is not available
Drawing is not available
Need to change shell design with new proposal
Not available with PT07 shell
Not available with PT07 shell
Not available with PT07 shell
Not available with PT07 shell
Need to change shell design with new proposal
Need to change shell design with new proposal
No need to change, since we can use current shell design.
Not available with PT07 shell
No need to change, since we can use current shell design. Since this is for VG
Need to change shell design with new proposal
Need to change shell design with new proposal
Need to change shell design with new proposal