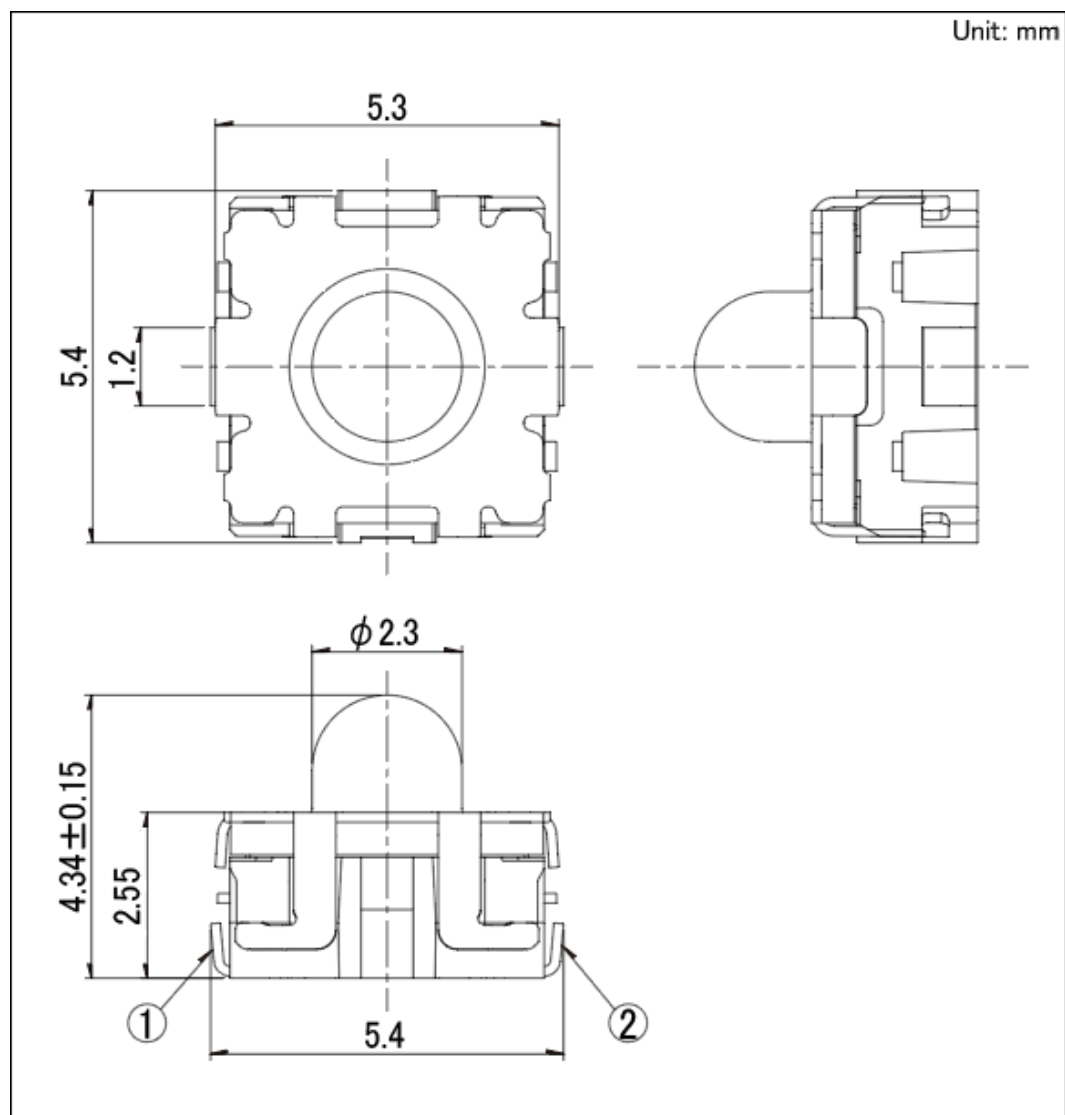


## 5.3 × 5.4mm Compact Middle-stroke Type (Surface Mount) SKSU Series

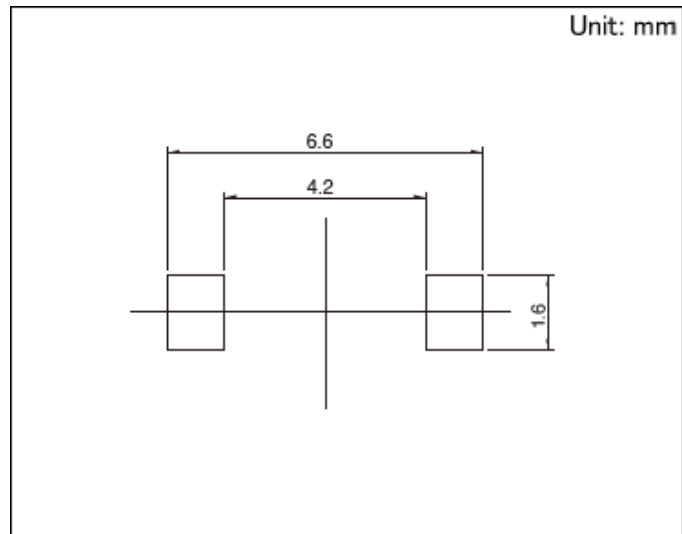
Type	Surface mount	
Operating force	3N	
Operating direction	Top push	
Travel	0.9mm	
Product height	4.34mm	
Operating life (50mA 16V DC)	250,000 cycles	
Initial contact resistance	100mΩ max.	
Protective structure	IP67 equivalent	
Stem color	Brown	
Series type	Sharp feeling type	
Operating temperature range	-40℃ to +90℃	
Rating (max.)	50mA 16V DC	
Rating (min.)	10 μ A 1V DC	
Electrical performance	Insulation resistance	100MΩ min. 100V DC for 1min.
	Voltage proof	250V AC for 1 min.
Durability	Vibration	10 to 55 to 10Hz/min., the amplitude is 1.5mm for all the frequencies, in the 3 direction of X, Y and Z for 2 hours respectively
Environmental performance	Cold	-30±2℃ for 96h
	Dry heat	80±2℃ for 96h
	Damp heat	60±2℃, 90 to 95%RH for 96h

Minimum order unit (pcs.)	Japan	2,200
	Export	2,200

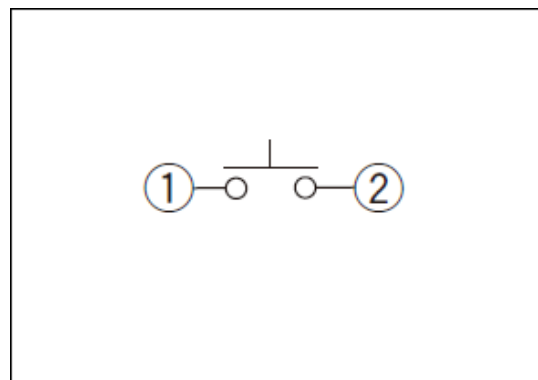
## Dimensions



## Land Dimensions

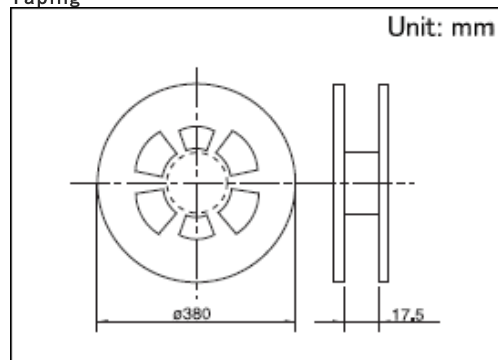


Circuit Diagram



Packing Specifications

Taping



Number of packages (pcs.)	1 reel	2,200
	1 case / Japan	17,600
	1 case / export packing	17,600
Tape width (mm)		16
Export package measurements (mm)		395 × 395 × 205

## Soldering Conditions

### Condition for Reflow

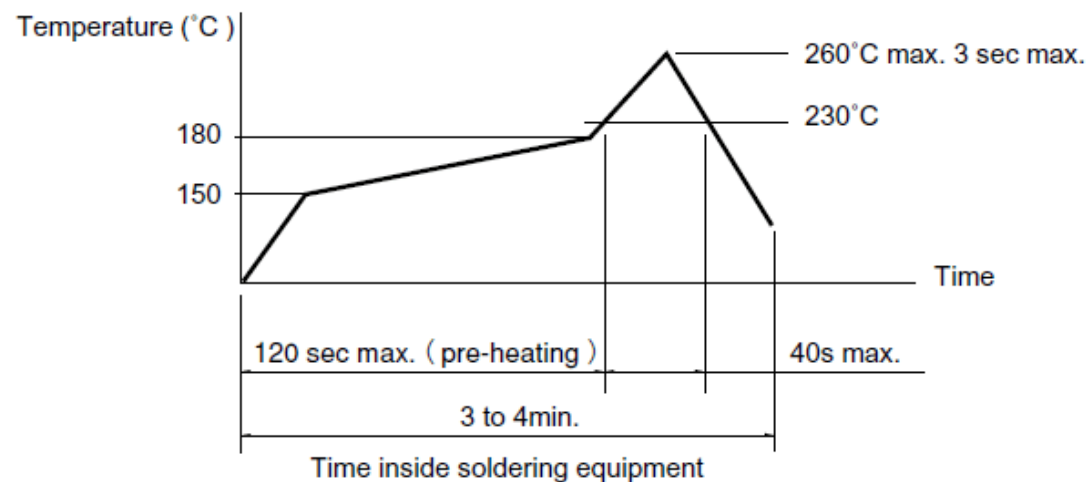
#### 1. Heating method

Double heating method with infrared heater.

#### 2. Temperature measurement

Thermocouple 0.1 to 0.2 Φ CA(K) or CC(T) at solder joints (copper foil surface). A heat resisting tape should be used for fix measurement.

#### 3. Temperature profile



(1) The above temperature shall be measured of the top of switch. There are cases where PC board's temperature greatly differs from that of the switch, depending on the material, size, thickness of PC board's and others. Care, should be taken to prevent the switch's surface temperature from exceeding 260°C.

(2) Soldering conditions differ depending on reflow soldering machines. Prior verification of soldering condition is highly recommended.

### Manual Soldering

Items	Condition
Soldering temperature	350°C max.
Duration of soldering	3s max.
Capacity of soldering iron	60W max.

1. Do not washing the TACT Switch™.
2. Prevent flux penetration from the top side of the TACT switch™.
3. Switch terminals and a PC board should not be coated with flux prior to soldering.
4. The second soldering should be done after the switch returns to normal temperature.

Notes are common to this series/models.

1. This site catalog shows only outline specifications. When using the products, please obtain formal specifications for supply.
2. Please place purchase orders for taping products per minimum order unit (1 reel or a case).
3. For  $\phi$  330mm diameter reel requirements, please contact us.
4. Protective structure :  
Assumes the switch is left alone without being operated. Under the specified conditions, dust and water ingress with a significant impact on the switch's on-off function is prevented.  
IP67•IP68 dust and water resistance is guaranteed for the switch alone and performance may not be guaranteed depending on the mounting conditions and usage.