

Resistive Position Sensors > RDC10 Series > RDC1014A09

## Linear Type RDC10 Series

[| Dimensions](#) | [Mounting Hole Dimensions](#) | [Circuit Diagram](#) | [Lever Dimensions](#) | [Linearity](#) |  
[| Packing Specifications](#) | [Soldering Conditions](#) | [3D CAD](#) |



Part number

**RDC1014A09**

 Inquiry

 Series Common Info

 Print

Travel	14mm
Mounting method	Horizontal type
Total resistance	10kΩ
Linearity	±0.5%
Operating life	200,000 cycles
Length of lever	4.5mm
Length of terminal	2mm

Operating temperature range	-30°C to +85°C
-----------------------------	----------------

Mechanical performance	Operating force	0.25N max.
------------------------	-----------------	------------

Electrical performance	Total resistance tolerance	±30%
------------------------	----------------------------	------

	Rated voltage	5V DC
--	---------------	-------

Environmental test	Cold	-40°C 240h
--------------------	------	------------

	Dry heat	90°C 240h
--	----------	-----------

Damp heat 60°C, 90 to 95%RH 240h

Minimum order unit (pcs.)	Japan	2,400
	Export	4,800

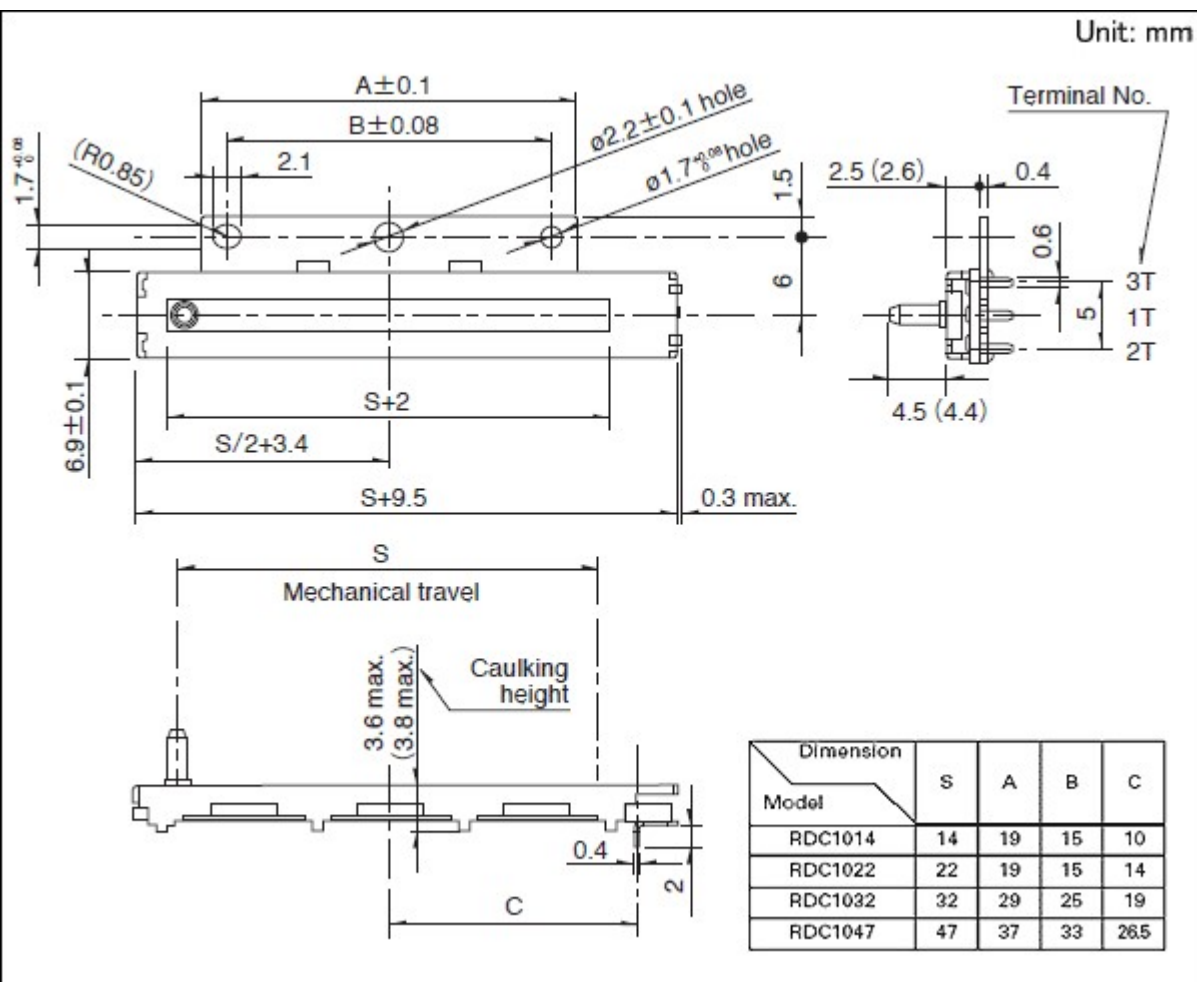
3D CAD (STEP)



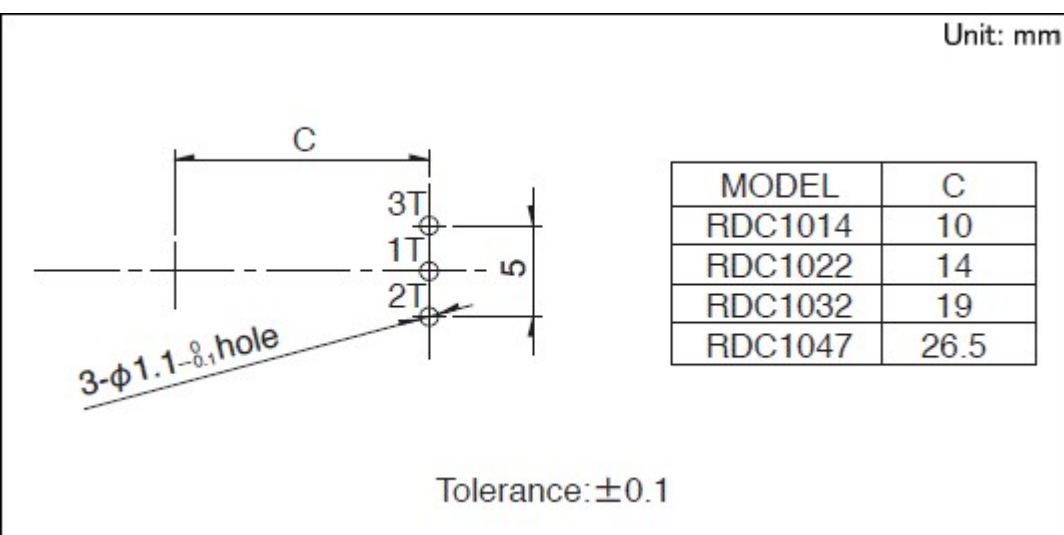
Certificate of Compliance to RoHS  
regulations



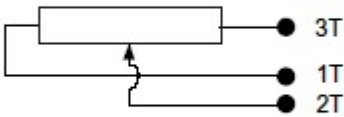
## Dimensions



## Mounting Hole Dimensions



## Circuit Diagram



## Lever Dimensions

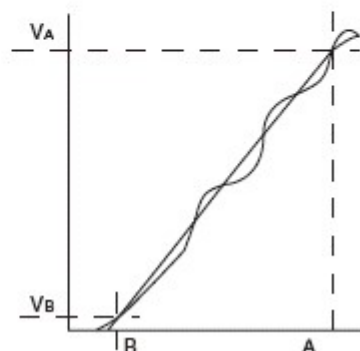
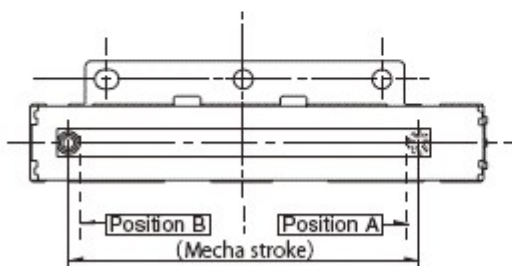
Unit : mm

Length	4.5 (4.4)
Dimensions	

Sizes in ( ) are applicable to RDC1047 only.

## Linearity

With rated voltage applied between terminals 1 and 3, the straight line which connects the measured output values  $V_B$  and  $V_A$  at specified reference positions B and A is assumed to be an ideal straight line, so that deviation against the ideal straight line when the voltage applied between terminals 1 and 3 is assumed to be 100% can be expressed as a percentage.



## Packing Specifications

Tray		
Number of packages (pcs.)	1 case / Japan	2,400
	1 case / export packing	4,800
Export package measurements (mm)		
		374×508×272

## Soldering Conditions

### Reference for Hand Soldering

Tip temperature	350℃ max.
Soldering time	3s max.

## Notes are common to this series/models.

1. This site catalog shows only outline specifications. When using the products, please obtain formal specifications for supply.
2. Place your purchase order in N minimum package units (N: integer).
3. Ask us for the export packaging unit.
4. Products other than those listed in above products are also available. Please contact us for details.
5. This products can be used in vehicles.  
Although these products are designed to perform over a wide operating temperature range, please ensure that you receive and read the formal delivery specifications before use.

## Inquiries about Products

 [Inquiry](#)