

[Photo](#) | [Dimensions](#) | [Mounting Hole Dimensions](#) | [Terminal Layout](#) | [Circuit Diagram](#) | [Packing Specifications](#) | [Soldering Conditions](#) |

PRINT

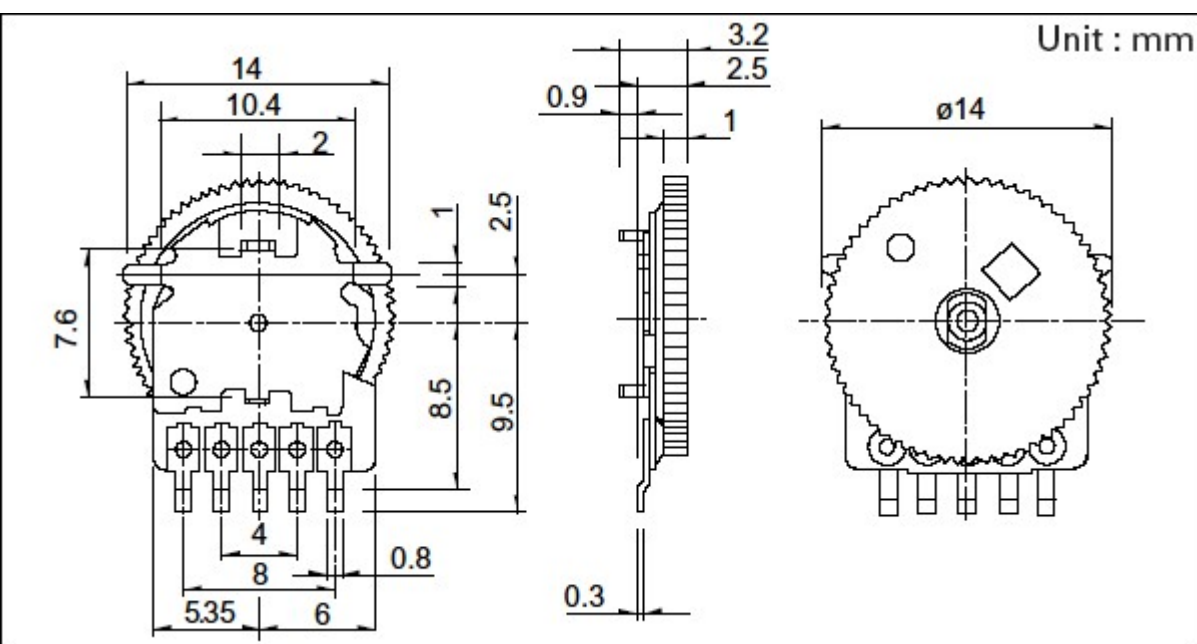
Part number		RK10J11R001Y
Number of resistor elements		Single-unit
Total resistance		10kΩ
Resistance taper		15A
Soldering		Reflow
Type		10mm Size
Knob types		Outer size: φ14 Knob thickness: t1.0mm Color: Black
Mounting board types		Surface mounting
For DC use		20V DC
Operating temperature range		-10ℓ to +60ℓ
Electrical Performance	Total resistance tolerance	±30%
	Rated power	0.03W
	Maximum operating voltage	50V AC 20V DC
	Maximum attenuation	70dB min.
	Insulation resistance	100MΩ min. 100V DC
	Voltage proof	100V AC for 1 minute
Mechanical Performance	Total rotational angle	270°±10°
	Rotational torque	0.5 to 10mN・m
	Stopper strength	70mN・m
	Push-pull strength	5N
Durability	Operating life	10,000 cycles
Minimum order unit (pcs.)	Japan	3,000
	Export	3,000



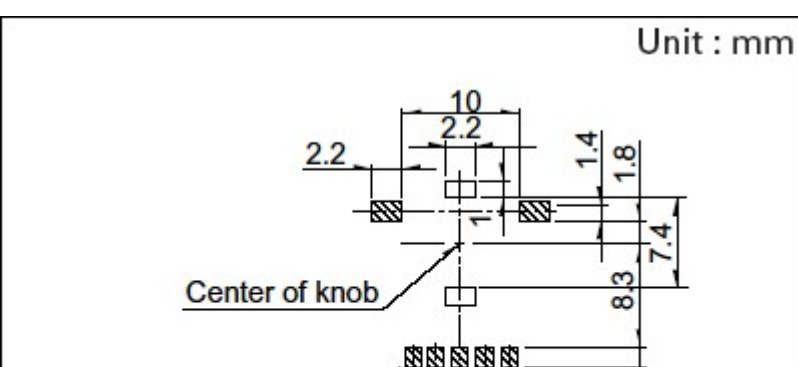
Photo



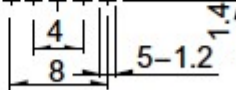
Dimensions



Mounting Hole Dimensions

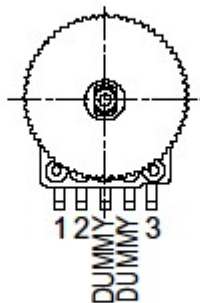


Solder lands are indicated
by the shaded areas

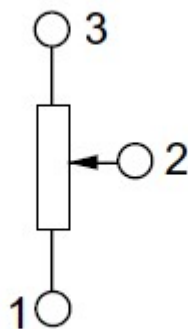


Viewed from mounting side.

Terminal Layout



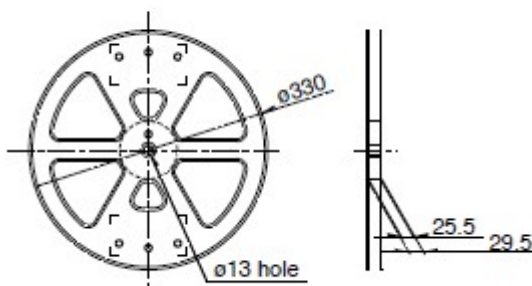
Circuit Diagram



Packing Specifications

Taping

Unit: mm

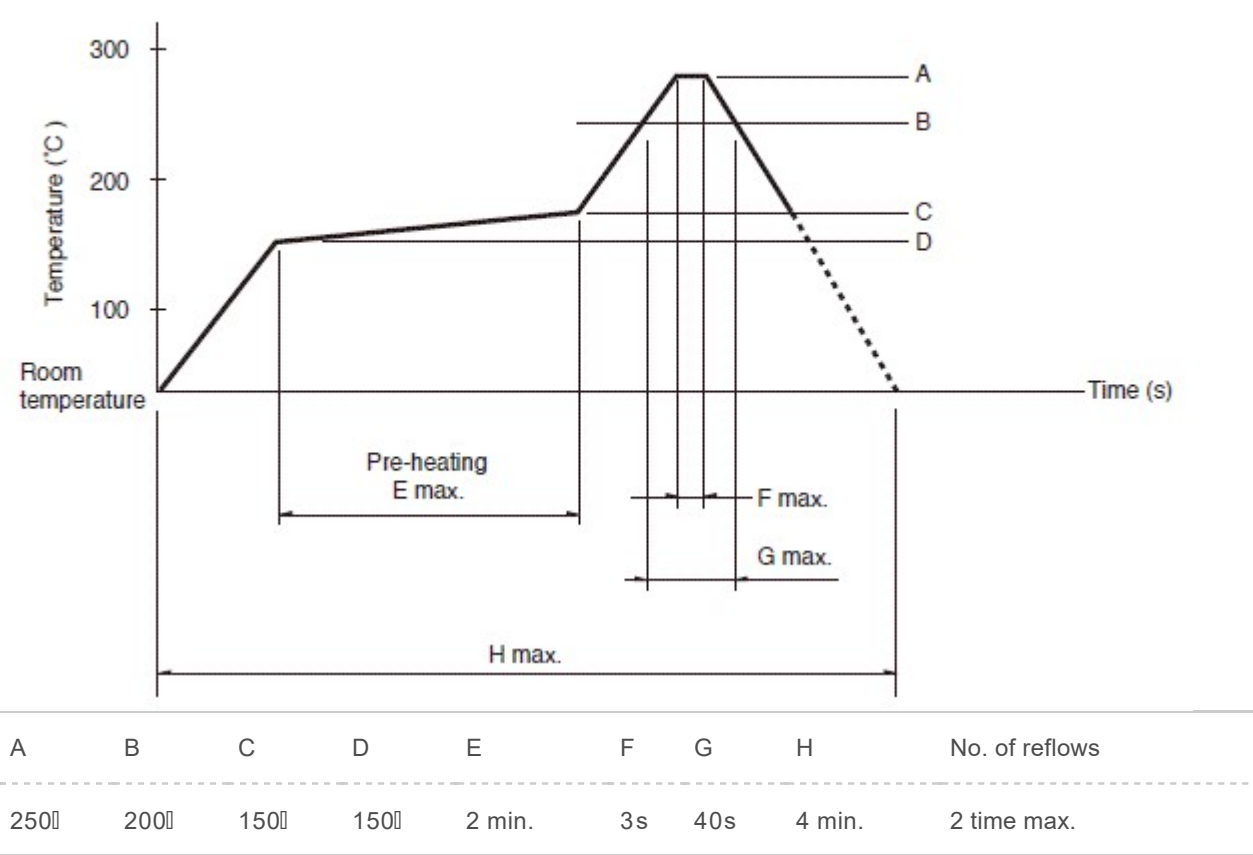


Number of packages (pcs.)	1 reel	1,000
	1 case / Japan	3,000
	1 case / export packing	3,000
Tape width (mm)		24
Export package measurements (mm)		397×401×139

Soldering Conditions

Example of Reflow Soldering Condition

1. Heating method
Double heating method with infrared heater.
2. Temperature measurement
Thermocouple 0.1 to 0.2 Φ CA (K) or CC (T) at soldering portion (copper foil surface). A heat resisting tape should be used for fixed measurement.
3. Temperature profile



1. When using an infrared reflow oven, solder may sometimes not be applied. Be sure to use a hot air reflow oven or a type that uses infrared rays in combination with hot air.
2. The temperatures given above are the maximum temperatures at the terminals of the potentiometer when employing a hot air reflow method. The temperature of the PC board and the surface temperature of the potentiometer may vary greatly depending on the PC board material, its size and thickness. Ensure that the surface temperature of the potentiometer does not rise to 250°C or greater.
3. Conditions vary to some extent depending on the type of reflow bath used. Be sure to give due consideration to this prior to use.

Reference for Hand Soldering

Tip temperature	350 max.
Soldering time	3s max.

Notes are common to this series/models.

1. This site catalog shows only outline specifications. When using the products, please obtain formal specifications for supply.
2. Please place purchase orders per minimum order unit (integer).
3. Products other than those listed in above products are also available. Please contact us for details.
4. Dip soldering can be applied to RK14J. For dip soldering applications, specify separately as "dip soldering applicable product".

Inquiries about Products

