



Rotary Type RDC50 Series

| Photo | Dimensions | Circuit Diagram | Linearity | Packing Specifications | Soldering Conditions |

PRINT

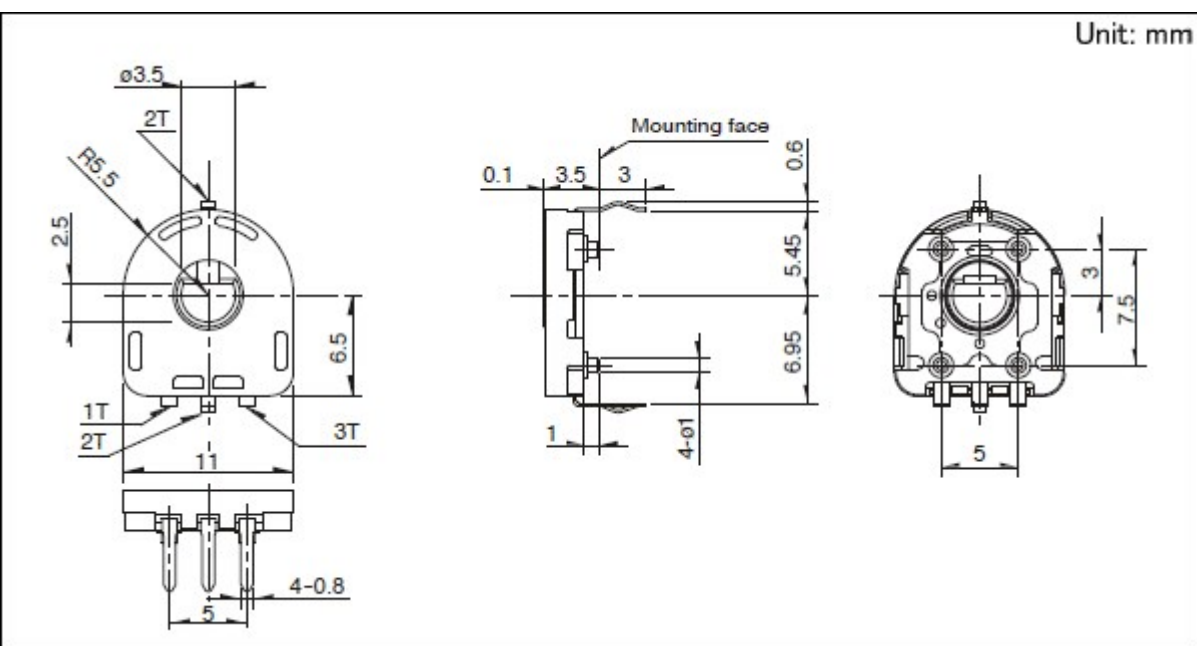
Part number			RDC501015A
Mounting method			Horizontal type
Total resistance			10kΩ
Effective electrical angle			333.3°
Linearity guarantee range			320°
Linearity			±2%
Hollow shaft variation			φ3.5 dia
Operating life			1,000,000 cycles
Operating temperature range			-40°C to +120°C
Mechanical performance	Rotational torque	2mN·m max.	
Electrical performance	Total resistance tolerance	±30%	
	Rated voltage	5V DC	
Environmental test	Cold	-40°C 168h	
	Dry heat	120°C 168h	
	Damp heat	60°C, 90 to 95%RH 96h	
Minimum order unit (pcs.)	Japan	1,500	
	Export	3,000	
3D CAD (STEP)			
Certificate of Compliance to RoHS regulations			

Photo

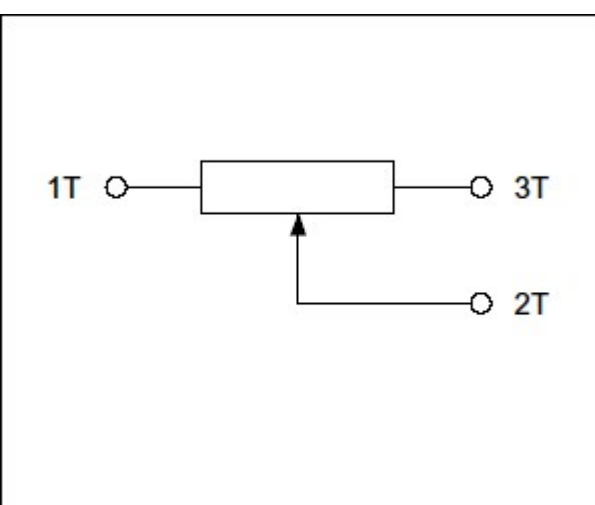




## Dimensions



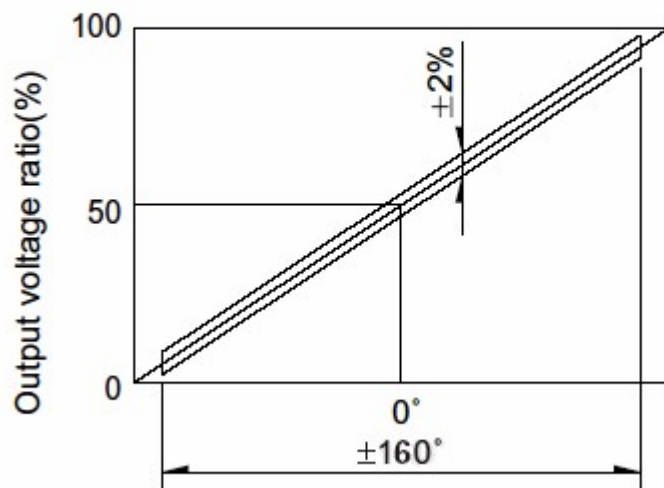
## Circuit Diagram



## Linearity

1. Reference taper : 100%/ 333.3°
  2. Index point is 50% output point
- The center is in the configuration diagram condition

The center is in the configuration diagram condition.



## Packing Specifications

### Tray

Number of packages (pcs.)	1 case / Japan	1,500
	1 case / export packing	3,000
Export package measurements (mm)		526×370×191

## Soldering Conditions

### Reference for Dip Soldering

Preheating	Soldering surface temperature	100 to 150℃
	Heating time	1 min. max.
Dip soldering	Soldering temperature	260±5℃
	Soldering time	10±1s
No. of solders		1 time

### Reference for Hand Soldering

Tip temperature	350±5℃
Soldering time	3(+1, 0)s

Notes are common to this series/models.

1. This site catalog shows only outline specifications. When using the products, please obtain formal specifications for supply.
2. Place your purchase order in N minimum package units (N: integer).
3. For reflow type, 1-reel is the minimum packing unit. Please see taping specifications.
4. Ask us for the export packaging unit.

5. Products other than those listed in above products are also available. Please contact us for details.

6. This products can be used in vehicles.

Although these products are designed to perform over a wide operating temperature range, please ensure that you receive and read the formal delivery specifications before use.

## Inquiries about Products

 **Inquiry**