

Switch Type Multi Control Device > RKJXW Series > RKJXW1014002

Series Common Info

# 8-directional Stick Switch (with Encoder / Center-push Function) RKJXW Series

| [Photo](#) | [Dimensions](#) | [Circuit Diagram](#) | [Output Relation Chart](#) | [Pin Configuration](#) | [8 Direction Codes](#) | [Packing Specifications](#) |

PRINT

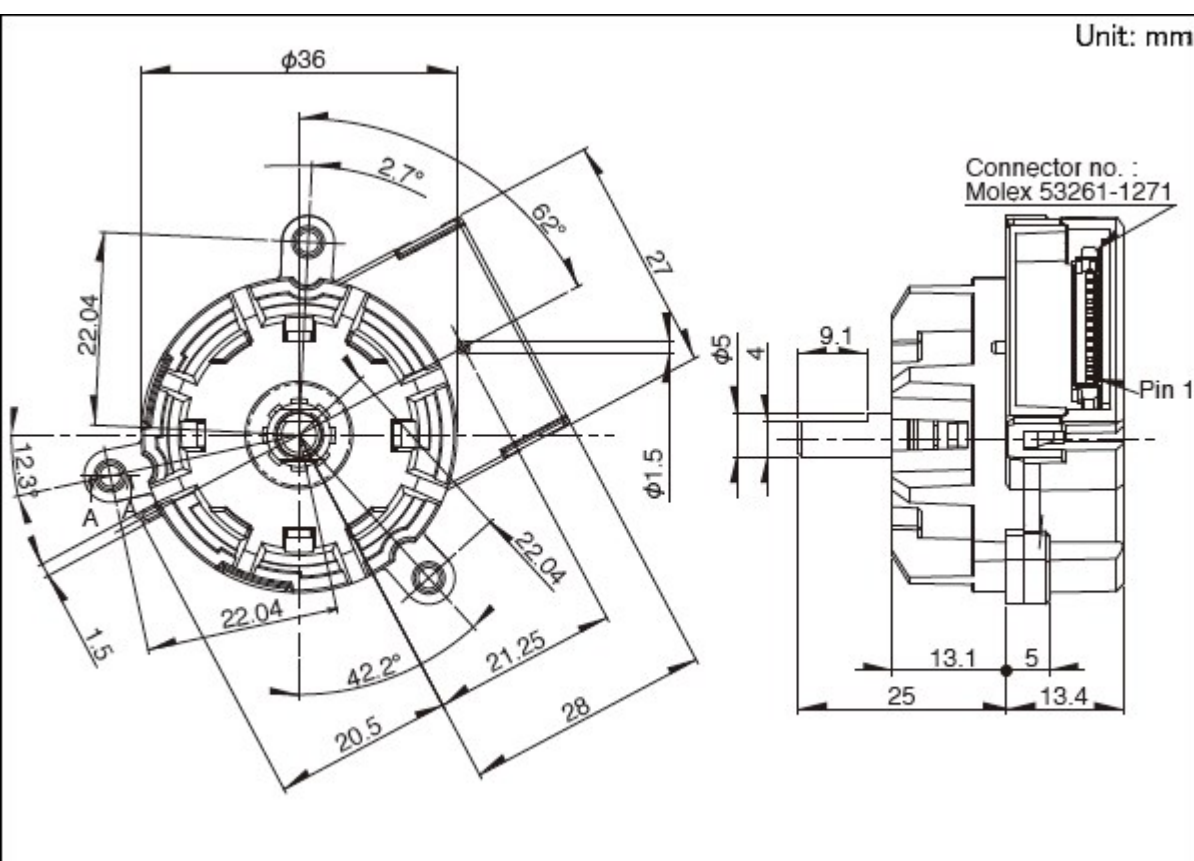
Part number		RKJXW1014002	
Number of operating shafts		Single-shaft	
Shaft material		Metal	
Stick switches	Contact resistance	1kΩ max.	
	Travel	8-direction	2±0.8mm
		Center-push	1.4±0.5mm
Encoder	Detent torque	30±20mN・m	
	Number of detent	30	
	Number of pulse	15	
Operating temperature range		-40℃ to +85℃	
Ratings (max.) (Resistive load)		10mA 5V DC	
Electrical performance	Directional resolution	8-direction	
	Encoder resolution	15pulses / 360°	
	Insulation resistance	100MΩ min. 250V DC	
	Voltage proof	360V AC for 2s	
Mechanical performance	Directional operating force	2.5±1.5N	
	Push operating force	3±1.5N	
	Actuator strength	Push/pull directions	100N (Push/Pull)
		Operating direction	50N
Durability	Operating life	Directions	Each direction 30,000 cycles
		Center push	30,000 cycles
		Encoder	30,000 cycles

Environmental performance	Cold	-40°C 500h
	Dry heat	85°C 500h
	Damp heat	60°C, 90 to 95%RH 500h
Minimum order unit (pcs.)	Japan	100
	Export	100
3D CAD (STEP)		<a href="#">↓</a>
Certificate of Compliance to RoHS regulations		<a href="#">↓</a>

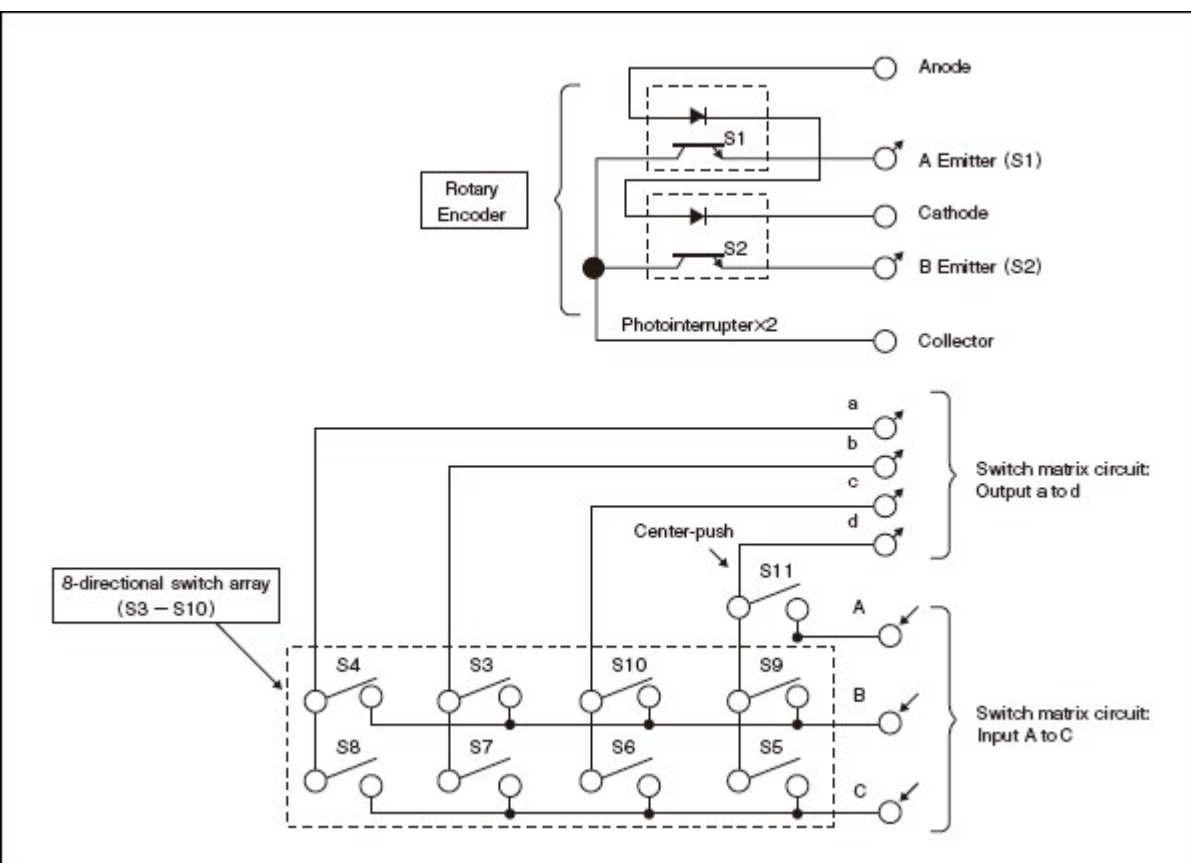
## Photo



## Dimensions



# Circuit Diagram



## Output Relation Chart

		Switch No.							
		S3	S4	S5	S6	S7	S8	S9	S10
Direction	A	ON	ON	(ON)					(ON)
	B	(ON)	ON	ON	(ON)				
	C		(ON)	ON	ON	(ON)			
	D			(ON)	ON	ON	(ON)		
	E				(ON)	ON	ON	(ON)	
	F					(ON)	ON	ON	(ON)
	G	(ON)					(ON)	ON	ON
	H	ON	(ON)					(ON)	ON

“(ON)” indicates that the switch is either On or Off at the time of the operation.

Discern the direction of operation when two switches are On.

Ignore any additional switches which may be switched On.

Example:

Operation in direction A

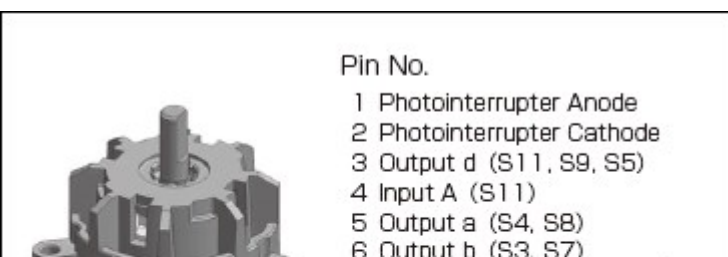
1st signal: S4 On > Standby

2nd signal: S3 On > Discern as direction A

3rd signal: S10 On > Ignore this signal (discern as direction A)

4th signal: S5 On > Ignore this signal (discern as direction A)

## Pin Configuration



Pin No.

1 Photointerrupter Anode

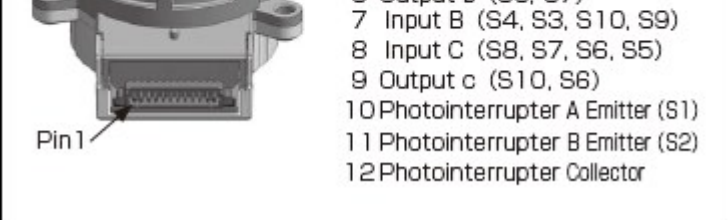
2 Photointerrupter Cathode

3 Output d (S11, S9, S5)

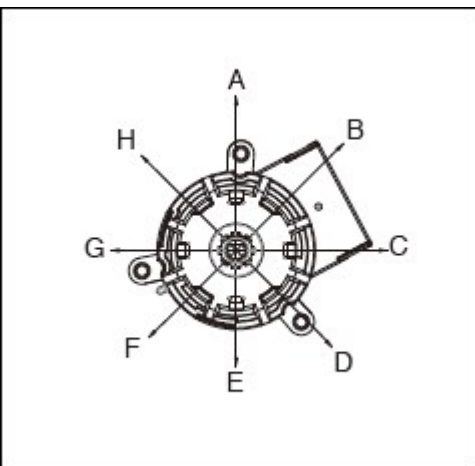
4 Input A (S11)

5 Output a (S4, S8)

6 Output b (S3, S7)



## 8 Direction Codes



## Packing Specifications

### Tray

Number of packages (pcs.)	1 case / Japan	100
	1 case / export packing	100

Export package measurements (mm)	360×270×230
----------------------------------	-------------

### Notes are common to this series/models.

1. This site catalog shows only outline specifications. When using the products, please obtain formal specifications for supply.
2. Please place purchase orders per minimum order unit (integer).
3. This products can be used in vehicles.  
Although these products are designed to perform over a wide operating temperature range, please ensure that you receive and read the formal delivery specifications before use.

## Inquiries about Products

[▶ Inquiry](#)